

# LOCAL HISTORY NEWS

Malvern Historical Society Inc. *Keeping Stonnington's History Alive!* February - March 2009 Newsletter No. 17

## 22 February Gascoigne Estate Walk

Join the **Malvern Historical Society** for a walk around part of the **Gascoigne Estate**, Malvern East (area bounded by Tooronga, Burke and Wattletree Roads and Coppin Street) **Sunday 22 February at 4pm**. Meet at the **Wilmot Fountain** near the **Conservatory** at **Central Park**, corner **Wattletree** and **Burke Roads**, Malvern East.

**Cost: Members – Gold coin donation \$5 donation for non-members (+\$5 for Walk Book 4) For further information please phone Steve 0418 546 103**

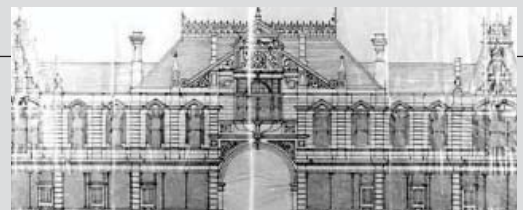


View towards Kingston Street, Malvern East (Reg No. 2499)

## 14 March Step Back in Time Day Prahran Market

Did you know **Prahran Market** is Australia's oldest continuously running food market? The history of **Prahran Market** includes stories of gold, barrow boys, war and rations, immigration, devastating fire and the provision of fresh foods. On **Saturday 14 March Prahran Market** will celebrate its amazing history with a "Step Back in Time" day.

**Telephone: 8290 8220**



Prahran Market elevation, Charles D'Ebro Architect 1891 (Reg No. 7092)

## 22 March Malvern East Walk

Join the **Malvern Historical Society** for a walk around the **Great Malvern Park** and **Triple Railway Station Estates**, Malvern East (area bounded by **Darling** and **Burke Roads**, **The Avenue** and **Brunel Street**, Malvern East) **Sunday 22 March at 4pm**. Meet at **Dairy Park**, **Darling Road**, corner **Rothesay Avenue**, Malvern East.

**Cost: Members – Gold coin donation \$5 donation for non-members (+ \$5 for Walk Book 4) For further information please phone Steve 0418 546 103**



Cranbourne Dairy Darling Road, Malvern East c.1937 (Reg No. 5083)

## 4 April Pets in the Park - Central Park Malvern East

City of Stonnington's **Pets in the Park** is a popular event held every year in **Central Park Malvern East**. The **Malvern Historical Society** stall and large display of photographs are always well received by both the adults and the children from the local community. **Can you spare an hour or two to help us?**

This is an opportunity for our members and supporters to become actively involved in Stonnington's local history. We will be handing out our latest free publication "**i Spy Central Park**", a self guided tour of the park.

**All help appreciated. Please call Lorraine Sage, President, 9885 9082**



Presentation of the Gilpin Drinking Fountain 1929 (Reg No. 485)

## Malvern Historical Society - Committee News

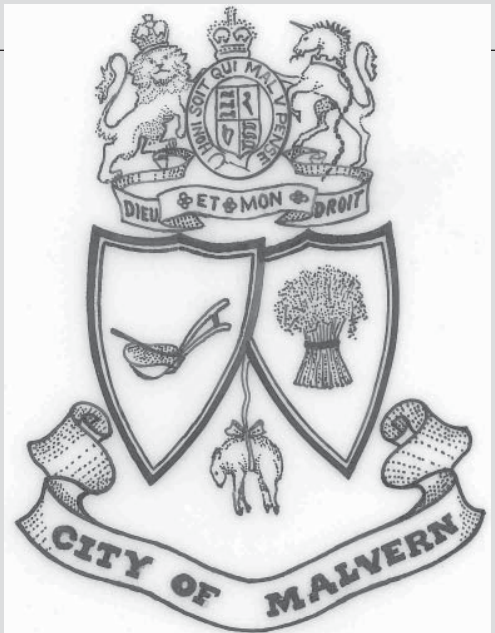
A warm welcome to **Kate Witteveen** who has joined the **Malvern Historical Society Committee**. Kate is already actively involved suggesting creative ideas to involve children in local history. After 12 years on the committee, **Honorary Treasurer Peter Frawley** has had to resign due to his commitments with other community groups. Peter has worked tirelessly during a time when the Society's membership has steadily increased from 80 to over 150. He has not only been part of the team that has applied successfully for a wide range of community grants but he has managed our funds very professionally. We wish him well in the future. **Honorary Secretary Robin Brown** has agreed to step into the position of Acting Treasurer. Robin brings to the position enthusiasm, a wide range of skills and a real understanding of the value of small community groups. It's a pleasure being part of this enthusiastic and productive committee.

**Lorraine Sage - President**

## Malvern Council Correspondence 1939 – Complaints!

During 1939 **Malvern Council** received a number of complaints. A telephone complaint was received from a **Valentine Grove, Armadale** resident. The resident stated that “outside the door of **The Red Cherry** cake shop there is a dish of poison on the footpath, allegedly to catch flies, and in her opinion, this dish constitutes a danger to children, dogs and cats and suggests that the Inspector order the dish be removed”. The shop is on the west side of **Glenferrie Road** between **Llaneast Street** and **Wattletree Road**. Letters of complaint included correspondence from the owners of **Windella** in **High Street** relating to the drum used by **De La Salle College** prior to **St. Patrick’s Day**, from **Egerton Road, Armadale** about present tenants keeping ducks and the resulting offensive odour, from **Cawkwell Street** about children playing in the street and from **Waverley Road** complaining about the **Coburn Bros.** wood yard in **Turner Street**.

The **Postmaster of Malvern North Post Office (Woodmason’s Dairy)** complained about the smell coming from **Ryan Bros. Stables**, a resident from **Glenferrie Road** complained that the fruit shop next door had flowers on the footpath for sale and an anonymous complaint was received about smoke nuisance from **Martin and King’s** factory in **High Street**.



City of Malvern Crest  
(Reg No. 7343)

## Stonnington Research Enquiries

The **Society** has recently received requests for information relating to verandah tiles in **Grace Street, Hoyts Malvern** cinema on the corner of Glenferrie and Dandenong Roads Malvern, a former **City of Malvern Debutant Ball** flower girl, **Aileen Palmer**, writer and daughter of writers Vance and Nettie Palmer, **Robert Sellar**, **William Philpott**, **Stonnington** mansion stables, **Carbethon Private Hospital**, (established in 1927 in **Wilton Vale Crescent** Malvern East, and now **Malvern Private Hospital**) and **Langleas, 66 Wattletree Road, Armadale** (66 Wattletree Road, was built in 1868 as a brick cottage of 4 rooms, for retired master mariner, **David Gillespie**).

The unlabelled photo in our **Newsletter No 16** has now been identified by the family as **Malvern**, Patrick Street Bondi NSW! All these requests have been researched and expertly answered by the **Stonnington History Centre** staff **David, Di and Ellen**.



66 Wattletree Road Armadale  
c1980 (Reg No. 5213)



Hoyts Malvern, corner Glenferrie and Dandenong  
Roads, Malvern 1984 (Reg No 5013)



Denby Dale 424 Glenferrie Road  
Malvern 1992 (Reg No. 12897)

## Stonnington History Centre - Records added last month

<http://www.maxus.net.au/stonnington/updates.htm>

**Ever wondered what records have been added recently to the catalogue?**

A new feature on the catalogue allows you to retrieve all records added in the previous month. Just click on the above link or look for the link on the normal search page.

Recently catalogued items include photographs taken for the **City of Malvern Heritage Study** 1992, details of research undertaken using two **Prahran** municipal electoral rolls held by the **History Centre**, 1881-82 and 1892-93 and “**The rugmaker of Mazar-e-Sharif**”, **Mazari, Najaf** 2008 - the biography of a refugee from Afghanistan who established a shop at **461 High Street Prahran** selling Afghan carpets.

## Which Prahran Rechabite Hall?

Some time ago, a descendant of **J.H. Furneaux** – a name strongly associated with the **Prahran Mechanics' Institute** – presented copies of a collection of 45 glass plate negatives to the **Stonnington History Centre**. This is a delightfully eclectic collection of images of early Prahran, some of which are justifiably very well known, but many of which were new to us. Included are photos (1860s-1920s) of pubs, shops, a bakery, a butcher's shop, the dismantling of the first **Church Street Bridge** etc – they can all be viewed on the **Stonnington Local History** catalogue by searching on keywords = "furneaux & glass" and format = "photos".

Two of the photos relate to the laying of the foundation stone for the **Prahran Rechabite Hall**, which I had presumed meant the handsome building still standing in **Little Chapel Street**, which was opened in 1889.

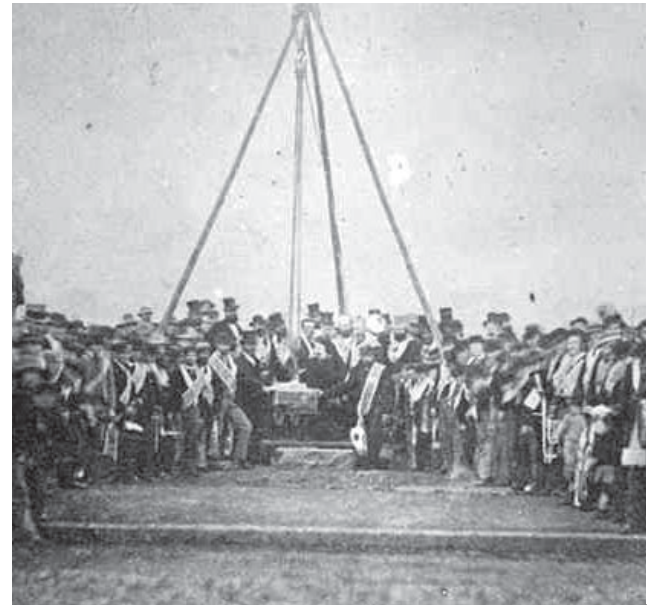
However, I have always felt a little uneasy about some inconsistent details, such as the caption "Procession leaving the Tent-room", which depicted the members assembled outside the first **Prahran Mechanics' Institute** building in **Chapel Street**. If curious, you can follow the trail of evidence in the detailed catalogue record (Reg no.12282), but the fundamental question arose – does this relate to the first or the second **Rechabite hall**, 1870 or 1889? After much reflection, the final litmus test in dating this photo hinged upon the photographer, **C. Rudd**.



Rechabite Hall, Little Chapel Street Prahran 2006  
(Reg no. 13336)



Procession leaving the Tent-room  
25 July 1870 (Reg No. 12303)



Laying the foundation stone of the first Rechabite Hall, Prahran  
25 July 1870 (Reg No. 12282)

In 1890, **Rudd** was listed in the **Sands & McDougall** directory as a photographer based in **Bourke Street, Melbourne** – quite a long way to travel in those days to photograph an event in **Prahran**.

Everything now pointed to this photo being taken in 1870, so you can imagine my disappointment to find no listing at all for **Rudd** in the earlier directory. Perhaps he was just starting out that year as a professional photographer? It looked like there were always going to be question marks about this photo.

In fact **Rudd's** name had been misspelt as **Rudel** in the 1871 directory, corrected the following year to read "photographer, **Chapel Street, Prahran**". Light bulbs go on big-time! A happy, serendipitous ending to this research story – the photo is much older than first thought.

We have no idea what the first **Rechabite Hall** in **Chapel Street** looked like, but we do have a photo of its foundation stone. The building was next to **Linay's Timber Yard** (north side), close to **Grey Street** on the east side of **Chapel Street**.

**David Tuck,**  
**Stonnington Local History Librarian 2009**

## Taking Local History to the Community

**Stop Press!** The **Society** has now distributed all copies of **"Back when..."** Look out for copies at the **Stonnington Libraries** and local bookshops and newsagents while they last!

We would like to thank the **East Malvern Community Bank** for funding the project, **Ray Pethick**, (**Ray Pethick P/L**) for his exciting graphic design and **Adam Norgate**, (**McKellar Renown Press Pty Ltd**) for the excellent quality of the production, especially the clarity of the original photographs. Thank you also for all the positive feedback we have received. This project has definitely achieved its aims - to introduce local history to children and to make local history more visible in the wider community. We would also like to thank **Claire James**, **City of Stonnington, Media and Publications Officer** for providing publicity, **Kate Bruce-Rosser**, **Stonnington Leader**, for the article and photograph and **Alex and Ned Hume**.

Our neighbourhood walks in December (**Adelaide Street**) and in January (**Cawkwell Street**) were both very successful. Even 35 degrees at 7pm did not deter over 20 walkers in January!

## Additions to the Stonnington Local History Collection

- **Cawkwell tiles** donated by **Margaret Coffey**
- **St Roch's Church** notices for 2008 donated by **Rev Father Ian Waters**
- Photograph of **Miss Vera Porter's Music School** donated by **Ray Price**

**Miss Vera Porter's Music School** was located in **Dandenong Road East Malvern** on the east corner of **Darling Road**. The brick house was numbered 439 then 1109 Dandenong Road. **Frederick** then **Vera Porter** occupied the property from 1932. It remained in the **Porter** family until 1986. **Ray Price** is the student 3rd from left in the front row. His brother **Val** is 2nd from left front row. Top right is **Dudley Simpson**, thought to be the pianist and composer of the '**Dr Who**' theme. **Wikipedia** describes **Dudley Simpson** (born in Melbourne 1922) as an Australian composer who is best known for his work on **Doctor Who**. Simpson's first work on **Doctor Who** was during **William Hartnell's** era as the First Doctor in **Planet of Giants** in 1964, but he is primarily associated with the programme in the 1970s. Between 1964 and 1980, **Simpson** composed the music for 60 **Doctor Who** stories and was also responsible for the memorable theme music for **The Tomorrow People** (1973) and **Blake's 7** (1978).

- **Postcards added to collection**

We thank **Diane Nicholas** for finding eleven old postcards of **Stonnington** in an antiquarian bookshop recently. And no, we're not telling you which shop! Here's a sneak preview, not even on the catalogue yet.

A ferry service across the **Yarra River** – from **Survey Paddock, Richmond**, to **Grange Road, Toorak** – operated from 1880 until 1934 when the **MacRobertson Bridge** was completed. It was named after the ferry that crosses the **Thames** in **England** between **Richmond** and **Kew**.



Miss Vera Porter's Music School c1937



Twickenham Ferry, River Yarra  
c. 1900 (Reg No. 23040)

## Welcome New Members!

The Society welcomes **Julie Bosley** and **Faye Pattinson**

### Have you enjoyed viewing the photos in this issue?

Material for the articles has been researched from the **Stonnington Local History Collection**. The database contains over 38,000 records. To view enlargements of photographs and to read more, just go to the website. [www.stonnington.vic.gov.au/history](http://www.stonnington.vic.gov.au/history)

East Malvern  
**Community Bank** Branch **Bendigo Bank**

300 Waverley Road, East Malvern. Phone 9563 6044



## Malvern Historical Society Inc. (A7682)

**P.O.Box 184, Malvern Vic 3144 Telephone: 0438 515 631 malvernhistorical@yahoo.com**  
**www.vicnet.net.au/~malvern**

The Malvern Historical Society Inc is a member of the Stonnington History Committee, an affiliated member of the Royal Historical Society of Victoria, a member of the South Metro History Group and has been appointed by the Public Record Office of Victoria as a Place of Deposit for non-permanent public records.

### OTHER STONNINGTON HISTORY CONTACTS:

Stonnington History Centre [www.stonnington.vic.gov.au/history](http://www.stonnington.vic.gov.au/history) • Tel 8290 1360

Prahran Historical and Arts Society P.O.Box 8649, Armadale Vic 3143 Tel: 9509 9978 [www.vicnet.net.au/~phas](http://www.vicnet.net.au/~phas)