

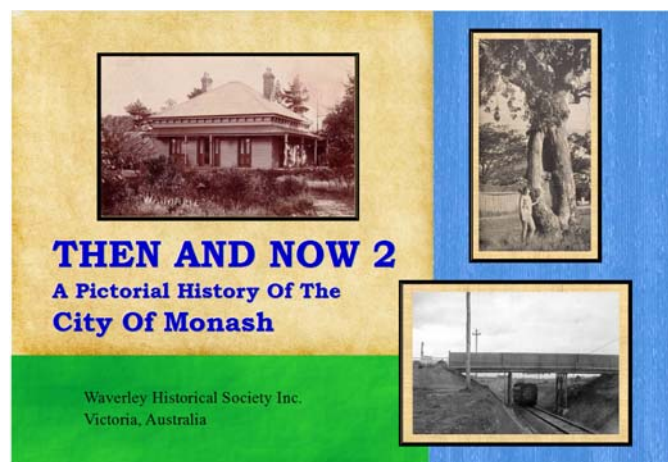
It's here Then and Now 2

To mark the 50th Anniversary of the formation of the Waverley Historical Society we have produced *Then and Now 2*. This is a follow up to the widely accepted initial volume published in 2010. This new book is presented in the same style as before with *Then* and *Now* images in the City of Monash. The early images that some of our earlier residents may well remember, are complemented with some historical background notes. The book comprises 60 coloured pages of images and text in A4 size.

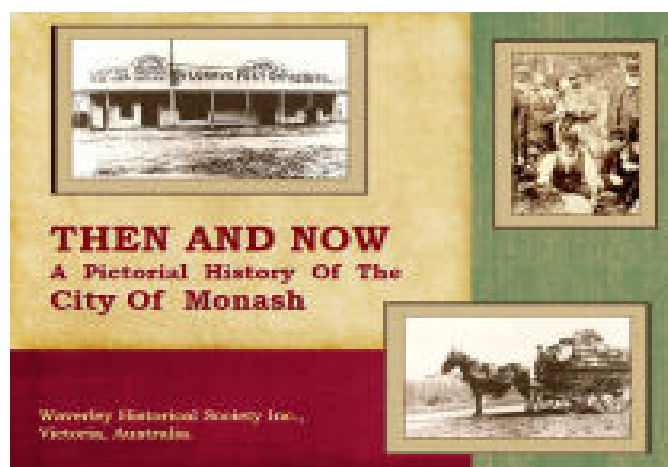
This book, and *Then and Now (1)* are available for \$20 each plus P&P \$6. To order visit

<http://home.vicnet.net.au/~whsvic>

If you live in Mt Waverley central 3149 we may be able to provide a direct delivery and save you on postage. Please email (waverleyhsvic@gmail.com) before making payment.



The WHS will also have copies available from our rooms during our opening hours (after Covid-19 restrictions). This is an ideal Xmas gift for family and friends.



Vale George William Dore

We note the passing of one time member George William Dore who has been a builder of the City of Waverley and Monash.

When he eventually gave the talk it was one of the most interesting. Some of what we recall was: the business was established by his grandfather in 1879. George was working for the Commonwealth Government setting up a military manufacturing plant at Holmesglen. He was 15 years old and just starting his apprenticeship and WWII finished.

Suddenly we didn't need the military equipment but housing instead for the great influx of returning servicemen. The plant was turned into a housing manufacturing factory. He stayed on and worked with producing pre fabricated slab homes. The first experimental "more than one storey" flat was built on the corner of Warrigal Road and Power Avenue next to the railway line. This led to experimenting with multi level Housing Commission buildings in Fitzroy, Footscray, and many other suburbs.

He talked about the brick delivery with the library where the supply came in different shades, so rather than have "patchy" sections he mixed the lots of different bricks so the final appearance would be more aesthetic as it is today. Also the architect had proposed a different way of laying the bricks to the normal way (¾ bond). This proved to be stable and it is now 51 years later.

He also built Holy Family School; The High Street Rd Uniting Church; Commonwealth Bank, Hamilton Place, MW; St. Stephen's new church; GW recreation reserve grandstand; Avila College's first buildings; St Christopher's Church, Syndal; St Matthew's new church on Lum Rd, GW; the MW Youth Club, Miller Cres; St Scholastica's Church, Burwood Hwy, Bennettswood; Maples Store on Virginia St - Stephensons Rd, MW; Bank of NSW, The Highway - Stephensons Rd, MW.

His son still works as a high quality builder in the area.



Established 1970

Incorporated in Victoria
Reg. No. A 0006377 A
PATRON

PRESIDENT
MarJo Angelico
SECRETARY
Margaret Boyes 9807 3408
EDITOR
Philip Johnstone
WWW
www.vicnet.net.au/~whsvic
waverleyhsvic@gmail.com

POSTAL ADDRESS
PO Box 2322,
Mount Waverley Vic. 3149
SUBSCRIPTION
\$25 per household

We acknowledge support of
the City of Monash.

With thanks to the Office
of Matt Fregon MP for the
printing of our newsletters.
40 Montclair Avenue GW
9561 0511

Contents

| | |
|---|------|
| The Church | 1, 2 |
| Virtual Talks and Tours | 2 |
| President's Report 2020 ... | 3-5 |
| Living under Covid-19..... | 5 |
| News from History Monash . | 6 |
| Ritchies IGA Benefits | 6 |
| Reminiscences on the GW Railway Line | 7 |
| Vale Beverley Anderson | 7 |
| <i>Then & Now 2</i> is here | 8 |
| Vale George W Dore | 8 |

Annual subscriptions 2020/21 are
due on 1 July. \$25 per household

HISTORY HERE 233

Journal of the Waverley Historical Society October 2020
ISSN 2206-6136



The Church

In the 1950s, the construction of the Jordanville South Housing Commission estate was in progress. At times, four houses were completed per day. Residents new to the area wanted places of worship, and the Church of Christ responded. In answer to the increasing demand from potential parishioners, a site was selected for the new Jordanville church on a piece of land the size of four suburban blocks on the eastern corner of Moorong Street and Waverley Road. The building, along with another Church of Christ in Brisbane Street, Strathmore, was built on 23 October 1954, in one day. The builders were the parishioners, who included carpenters, bricklayers and electricians. It is believed council inspectors were on standby to

Continued on P.2

Coming Events

The WHS is in hibernation until the lifting of restrictions on crowd events.

Our **August birthday** marked 50 years since the founding of the WHS by a group of Waverley pioneers. We are anticipating that restrictions will **NOT** be lifted sufficiently to allow us to celebrate this event in our rooms. **See P2**

Unless otherwise stated,
General Meetings are held
at 2pm on the fourth
Wednesday or Sunday in
our rooms above Mt Waverley
Library (Lift Available) 41
Miller Cres., Mt Waverley.
For excursions and outings
please carefully note time
and location details.

Waverley Historical Society Annual General Meeting

2pm
Sunday 29 November 2020

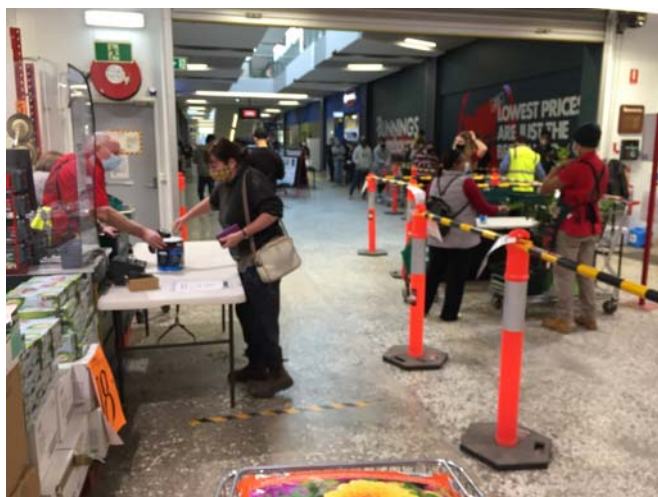
Purpose:
Acceptance of the Financial Accounts 2019/20
&
Election of Office Bearers

Continued from P.1

complete the necessary paperwork. The structure was made of cement sheeting and had a flat sloped galvanised iron roof. Both churches were completed in just 14 hours on a Saturday in readiness for the first service on the Sunday.

Kindergartens were not yet common in those days and many were operated in churches by volunteers. Hundreds of Jordaville children have fond memories from attending kindergarten in the church hall throughout the 1960s.

In 1973, the church, which had been positioned in the centre of the large block, was moved 50 metres to the east, thus vacating almost half the land. Later that year, the land was sold and housing units were built on the western blocks. The newly positioned church then underwent renovations including a new façade of red brick and an extension to the east side of the structure. As the name Jordaville was used less, the Church became known as Chadstone Church of Christ. In 2020 the property is used by two congregations, the Church of Christ and Shekinah Melbourne.



Covid-19 at Bunnings Store in Warrigal Rd Chadstone

Virtual Talks and Tours

With the Covid-19 lockdown we cannot visit historical sites to explore their treasures but we can make some virtual tours to many sites in Melbourne and elsewhere in Victoria. Some of these may whet your appetite to create a list of places to visit when we are allowed to roam free throughout the State.

Starting at the **National Trust Australia** - Vic. Web pages: <https://www.nationaltrust.org.au/>

Go to the Victorian educational area of these webpages to learn of the history of the McCrae Homestead on the Mornington peninsula. Choose the virtual tour with *George*. This is an audiovisual of the rooms in the house.

Or take the virtual tour of Governor Latrobe's Cottage of 1843 in Kings Domain.

Ripponlea gardens, Polly Woodside.

These tours appear to work best with a Chrome browser.

To celebrate 75 years since the end of WWII the National Trust has assisted in the creation of an interactive on-line platform that explores 18 sites of significance in **World War II at home**: www.wwiiathome.com.au These include virtual tours of the:

- War cabinet rooms in Victoria Barracks.
- Explosives Factory Maribyrnong.
- Mallacoota Bunker.
- Werribee satellite aerodrome.
- Heidelberg Military Hospital.

plus many more.

Museums Victoria has virtual tours of:

- Melbourne Museum, Carlton
- Science Works, Spotswood
- Immigration Museum, Flinders St, Melbourne
- Royal Exhibition Buildings, Carlton

These virtual tours are sure to lead you to wonderful history items which will get you thinking of future visits.

Public Records Office Vic

The PRO Vic is promoting History Month with the theme "Between birth and death lies history."

<https://historymonth.org.au/events/>

Monash Public Library

<https://www.monlib.vic.gov.au/Whats-On>

- Melbourne in Neon: Virtual Talk on 18 Nov.

Reminiscences on the Glen Waverley rail line

In about 1950 at Mt Waverley there was also a goods siding platform and shed (this siding was not electrified as it would have been hazardous to any workers loading wagons due to the very high voltage).

One time walking home from school as an always curious 10 year old Mt Waverley boy I spied a padlock on the goods shed.

What is inside ??? I practised my Houdini trick on this hasp and staple lock and opened the door. There inside was a beautiful, largish three disc plough (harrow), brand new and painted in two colours with clean discs. I closed and locked the door without any damage. Walked home again happy.

Another time upon getting toward the station the *Red Rattler* pulled in. But "WHAT IS THIS". There is a goods wagon behind it. After letting one or two passengers off from second class it headed up towards Syndal letting me see a few farm workers standing around here and there. But hang on, the *Red Rattler* stopped about 5 chains past the siding points. One man then unlocked and set the rail line points to the siding and relocked. (These locks were Houdini proof.) Another of the farm workers was talking to the *Rattler* driver and another was standing next to the points on my side of the siding line. Anyway the *Rattler* and wagon set off back down towards the points. Not having seen this operation before my mind was boggling at things that were heading towards disaster. (Oh the excitement), the least of which was that the electric *Rattler* would be stranded in the siding without electricity and unable to get back onto the main line (Oh more Excitement). Anyway the *Rattler* stopped suddenly just before the siding points. The wagon then continued through the points and down the siding. A very fit farm worker ran beside the wagon, grabbed onto it and jumped onto the long brake lever under the wagon.

Home again very happy and if there is nobody around tomorrow arvo I will be giving that wagon a good inspection (Remnants of last loads etc.)

Kevyn Sidney Brown is the son of farm worker and arborist Sidney Arnold Brown and grandson of Mt Waverley grocer Sidney Charles Brown.

The S C Brown store was located at what was central Mt Waverley, atop the High Street Rd hill, corner of what is now Fleet Street. This centre of the Mount Waverley district effectively moved to its present location with the arrival of the railway in 1930. This wooden store building was later moved to Huntingtower School where it functioned as the gardener's equipment storage shed.

Vale

Beverley Anderson

Waverley Historical Society is saddened to announce Beverley's passing.

Bev took pleasure in being a productive member of WHS.

She was Treasurer and Membership Officer for a few years, and enjoyed mixing with other members at the general meetings.

She took over the organising of the WHS textile collection, storing the items in archival suitable tissue and special large boxes and displaying some of them in the glass cabinets in the foyer of our rooms.

The three-generation wedding dresses were her favourite.



The S C Brown store on the corner High Street Rd and what is now Fleet Street. Note the tree to the left is probably the most western of the Avenue of Honour.

History Monash

A report from our sister society in Monash City.

Greetings from History Monash Inc. Like WHS, we have continued to work remotely during the past few months.

The experience of living through a momentous historical event reinforces the importance of preserving historical records, and we've been fortunate to receive Public Record Office of Victoria funding for archival shelving and archival preservation materials. The latter will be used to help in cataloguing and storing the comprehensive T.G.Newton (real estate agent) collection of maps and documents relating to land and property in the Oakleigh area.

Helen Gobbi, HM Vice-President and historian, has written about the Spanish Flu as experienced in Oakleigh for HM's next newsletter, *On Broadway*. An interesting aspect was the establishment by the State Government of a temporary hospital in the grounds of Oakleigh Primary School to care for pandemic patients (1918/19).

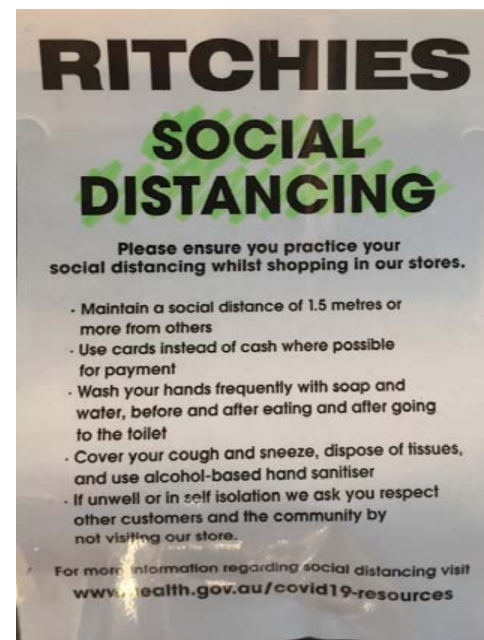
To support members and local people during the current pandemic, History Monash has uploaded five self-guided history walks to our website www.historymonash.org.au. You may like to try them. History Monash also looks forward to introducing you to an overview of Oakleigh's history via our next exhibition, *Historic Oakleigh*, when pandemic restrictions allow. We look forward to meeting you when we can!

Ann Nield President History Monash Inc.



While we were under lockdown this is what has been built on the Allison-Monkhouse Funeral's site at NE corner of Princes Hwy and Springvale Road

WHS File Image



Ritchies IGA Mt Waverley under Covid-19

C. Norton

Ritchies IGA Community Benefits

Ritchies supermarkets have long supported Waverley Historical Society and many other groups through their Community Benefits scheme. In the early days of the scheme we were donated the equivalent of approximately one membership every month.

Now Ritchies is turning 150 years old, having been started in Frankston by Thomas Ritchie, a local councillor and pioneer who arrived in 1851. It is the oldest supermarket chain in Australia, and pre-dates Federation (1900), sliced bread (1927), the telephone (1876) and even toilet paper (1878)! Read more at <https://www.adnews.com.au/campaigns/ritchies-supermarkets-celebrates-150-years> To celebrate, they are launching a new Benefits card and app. As well as continuing to donate a percentage to WHS, they promise more for you the customer with special promotions, lower prices, and other offers. Just drop in to any Ritchies, and pick up a card or leaflet, nominate Waverley Historical Society, and the benefits begin. Note, old cards will no longer work.

Waverley Historical Society President's Report 2020

MarJo Angelico

This is the end of our 50th year – and what a year it has been. With the Covid-19 lockdowns, 2020 has been unique in our history and in the history of the whole world. There have been pandemics throughout history, but never lock-downs around the world.

Committee

The year began ordinarily enough with our 49th AGM in August of 2019. Many of the committee continued faithfully in their roles, for which we thank them. Some have served for many years and continue to give generous amounts of their time and expertise to keep the Society functioning. Many thanks to Philip Johnstone (Vice President yet again, webmaster, newsletter editor, and equipment officer all for well over a decade), Kerrie Flynn (second Vice President, research officer, and other roles), Chris Norton (long-time photographer and videographer), Sueie Barber/McGrath (Program co-ordinator and emailer), Sandra Hymas (data enterer and safety officer), Ed Hore (council liaison and membership officer), Virginia Barnett (display mounter and newsletter contributor) and Beverley Delaney, although she was on leave due to her recent sad loss. All of these people have now put in another year in their various roles, and it is worth noting that many are going through personal turmoil of various sorts. We thank them for their dedication through hardship both individual and because of pandemic lockdowns. Thanks also to Jane Turton for her time as Treasurer, and to Norma Schultz who took on that role, leaving the Secretary role open, and who should return to us to manage that, but Margaret Boyes. It has been a productive year with a committee that has worked together well, and I thank each member for ongoing commitment.

Programme (by Sueie McGrath, previously Barber, Programme Co-ordinator)

The year commenced well with our participation in Open House Melbourne, a talk on the Olney and Petfield Pioneer families, an Historical Walk around Black Flat, a lovely visit to History Monash (formerly Oakleigh & District Historical Society), Carina Leitch's fascinating talk on WWI, and then in February we were treated to a talk on Burwood Cemetery.

Unfortunately, we had to cancel the balance of this year's programme due to Covid-19. The plans consisted of The Dandenong Creek Walk, Fallen Diggers Talk, the 90th anniversary of the

Glen Waverley Line talk, and an open day at the WHS rooms for members to see our collection. We intend to run these events some time in the future, except for the railway talk which appeared in our newsletter HH 231.

Thanks to all the committee for their assistance in helping to plan these events and we look forward to a fuller calendar this next year.

Membership (by Ed Hore, Membership Secretary)

At the end of the 2019/2020 financial year, the Society had 65 members, comprising:

| | |
|---------------|----|
| Life Members: | 6 |
| Households: | 15 |
| Individuals: | 44 |
| Total: | 65 |

This number included ten new members introduced during the year (all being classified as Individuals and mostly attributed to the success of the local walks conducted throughout the period).

We regret the passing this year of some of our older members, who have taken with them personal knowledge of the history and growth of the Waverley district. Sadly, committee member Sandra also lost her husband recently and our thoughts are with her.

We should also note that we have a good number of members attending on our Wednesday work-times regularly (when not in lockdown) to assist in the recording of our collection, plus a diligent non-member assisting.

Collection Report (by Norma Schultz, archivist)

During the early months of this past financial year some interesting donations have been received, such as a framed photograph of Noel Reid, local estate agent throughout the growth years, and a collection of Waverley Festival Theatre programs which filled a gap in our records but most importantly answered a then recent enquiry for information about drama in Waverley. A more recent donation has been photographs and other items of Syndal Technical School.

A volunteer turned member, Ted Sullivan, over the past year, has paired the large aerial photographs in the collection to the cadastral (section) maps and has created an index and cataloging system for them. It has been a massive task and will be very useful as the popular question from the public is "What did my house look like in the past?"

Kerrie Flynn has been renovating the *Family* files. They have been relocated and now have more space and are being reviewed and updated.



Monash Freeway outbound at afternoon peak during Covid-19 in August 2020. Normally bumper to bumper!

M. Angelico

Thanks also to Clive Haddock for the interesting but also valuable research into early families in the area.

The major continuing project over recent years has been the archival storage of all the Society's photographs. At last it is completed thanks to Sandra Hymas, Kerrie Flynn and volunteer Rohan Gibbs.

The Society's realia collection has been put on show in the glass display cabinets in the foyer by Virginia Barnett and changed often and sometimes are on show in the Library. To help with this, we replaced our A3 printer/scanner this year.

Many projects are happening every Wednesday afternoon. Members are welcome to visit and browse through old newspapers, to look at some of the albums or read some interesting historical magazines.

Photography and Videography

(by Chris Norton, WHS Video Photographer)

This last year has been another busy year with many old familiar sites and buildings being replaced.

Lots of new buildings have been built taking the place of old familiar sites this last year.

To mention some:

- The Glen Shopping Centre is now almost complete.
- High Steet Rd & Hunter St corner. Medical Centre is open with a new extension.
- Highbury Rd, 696, Retirement Centre is open and operating.
- Regent St Retirement Centre is open and operating.
- Blackburn & Princes Hwy development is almost completed.
- Alvie Rd Bridge is now having reinforcement columns constructed after an incident.

The old Syndal Tech. tuck shop on the corner of Lawrence and Montgomery has been demolished and about 6 new three-storey units are being built.

More photos have been sorted into Streets & Numbers. Most talks have been videoed and backed up and have been backed up onto DVD's.

Research (by Kerrie Flynn, Research Officer)

This year has been a very interesting challenge. I had very few research questions before Covid 19 invaded our time. However since Covid many people have been tidying out houses and boxes and finding interesting memorabilia. Facebook has become a great resource for people sharing what they have found so I joined the Jordanville group, Mt Waverley group, Glen Waverley group, Oakleigh group and our own Waverley Historical Society page answering questions where I could. This allowed me to let people know we exist and point them in the direction of our website, sharing the new venture of the Monash Library where people can now search for Waverley Street names (as advertised in recent WHS newsletter HH232).

To show our expertise in doing research I have posted on the 5 groups about our new book *Then and Now 2* and have seen many likes and a few comments. Several have sent their details and purchased our new books as well as some older ones.

Council Liaison

(by Ed Hore, Council Liaison Officer)

With the advent of the Covid-19 crisis in early 2020, and excluding interaction between Society executives and library team members, there was little direct activity involving the Society and the Monash Council over the year, other than the finalisation of the Tenancy Licence Agreement which was signed off in late calendar 2019. This agreement has been outstanding for more than a decade and although it affords little protection to the Society (other than an expectation that Council staff and Councillors will act in good faith at all times in their dealings with the Society), its completion does provide a recognition by Council of the work done by the Society and the benefits accruing to it from our existence.

Hopefully, the upcoming year, after the Covid-19 restrictions have been eased will result in our continuing good relationship with Council staff remaining sound.

Education

When other groups ask WHS for a speaker on local history, one of the educators goes to their meeting to show slides and explain them, as members will have seen at some of our own meetings, like our recently created Virtual Tour of Stephensons Road. We have now developed

several of these virtual tours and will continue to expand our repertoire. We also have the *Early Days* in a series, covering most parts of old Waverley.

Across 2019-20 we have spoken at ten other groups – Monash Rotary and Mt Waverley Rotary, Glen Waverley combined Probus and Waverley Probus, Edrington history Group, Holy Family Friendship Group, Mt Waverley Library, Monash Gallery of Art, and twice at Waverley Gem Club. Talks are generally well attended and well received. Of course that all stopped in March, but further talks had been booked at Waverley Woodworkers, Pinewood Probus, Waverley Seniors and more. Possibly they will re-book next year some time.

Our historical walks continue to draw interested people from both within the Society and from outside. Several have now joined the Society. Sometimes other groups ask us to organise walks for them too.

Newsletters and Publications

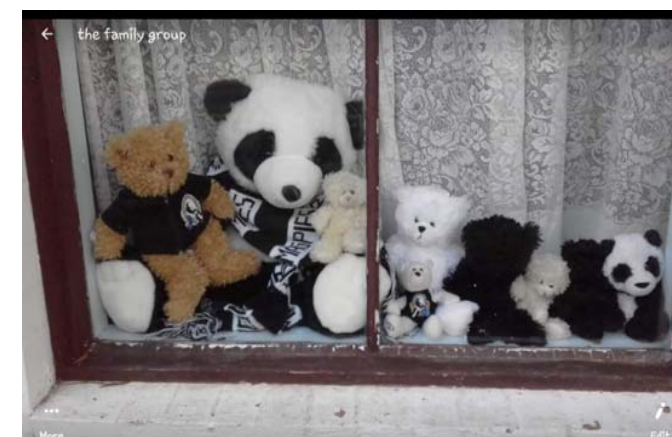
Our newsletter continues to come out regularly despite the lockdowns. In fact, this being a unique time in everyone's history, we have begun a collection of images, stories, and ephemera about Covid-19. Thanks go to Philip as editor and to Matt Fregon's office for printing. We hope all members are happy with the coverage, but of course all know the cure if dissatisfied – please add your constructive contributions at any time!

The big news for 2020 of course is publication of our newest book, *Then and Now 2*. A committee of four wrote and edited it. Philip Johnstone, Kerrie Flynn, Jane Turton and I undertook the task before any inkling of the lockdowns emerged, little realising that we would be prevented from meeting in person. We had allowed the whole financial year to complete it but actually finished early, having developed a system of online editing. It was to have been launched in August as part of our Jubilee celebrations. The launch is delayed, but the books are selling well.

Without the dedication of many people, Waverley Historical Society could not do all it does, so many sincere thanks to everyone.

MarJo Angelico, President, for the WHS committee
August 2020

Living under Covid-19



A Monash resident

Covid-19 lockdowns can be trying for all ages. Children and adults all need to get out of the house and exercise for physical and mental well being. Amusing children during the neighbourhood walk is enhanced by exploring. It is interesting to look at house windows to see what might be there. During Victorian Lockdown 1, Teddy Bears appeared (Above).

During Victorian Lockdown 2 *Spoonvilles* appeared in local parks. The concept of *Spoonville* originated Berkshire, UK. Children are encouraged to place their decorated spoons during their walks to parks. Below is a *Spoonville* in Bushy Park, Glen Waverley



A Facebook contributor

AGM 2020 Items

The audit of the WHS financials is complete and annual reports have been prepared. Our AGM has been postponed until November. A copy of the audited Financial Statement is available upon request. Please email waverleyhsvic@gmail.com