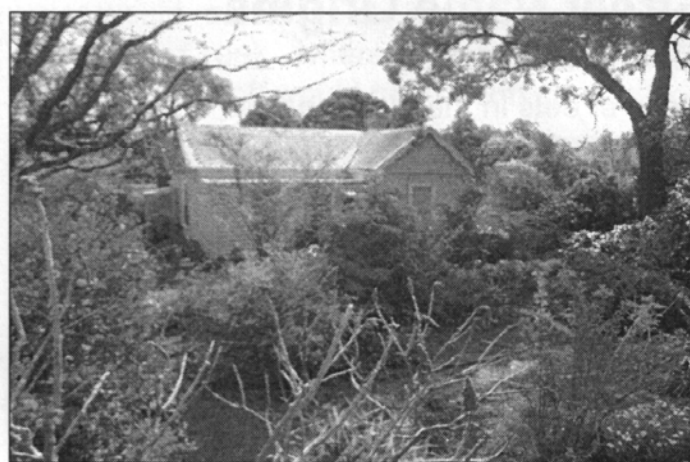
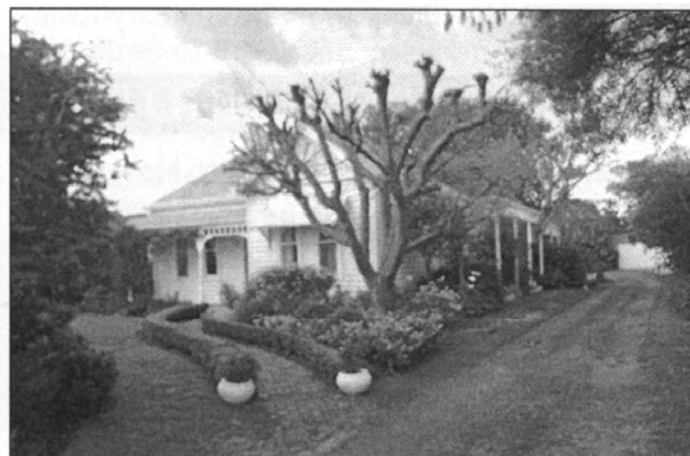


## Mount Waverley Historical Walk

For the first time, the Waverley Historical Society has provided an event for the Monash City's Positive Ageing Lifestyles program. On 13 September an enthusiastic group stepped back in time with MarJo Angelico as she led them on a historical walk through part of Mount

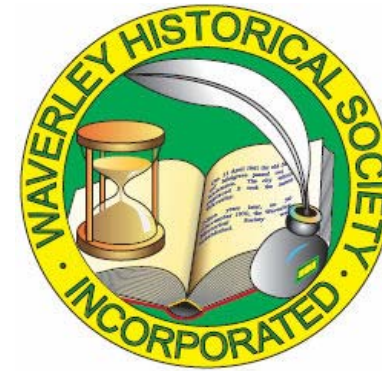
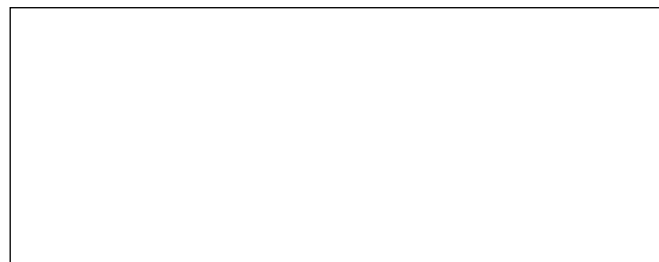
Waverley. As most of the walkers had not previously known of the Society's activities, MarJo was delighted to share her knowledge of local history with them. Another walk is planned for 18 November and will be in the Oakleigh Cemetery. Meet 1 pm at bandstand



L-R: Walkers group, 'Hazelwood', 'Yolcks', 'Dillon' House

Photos: Chris Norton

Waverley Historical Society, Inc.  
PO Box 2322  
Mount Waverley 3149



# HISTORY HERE 201

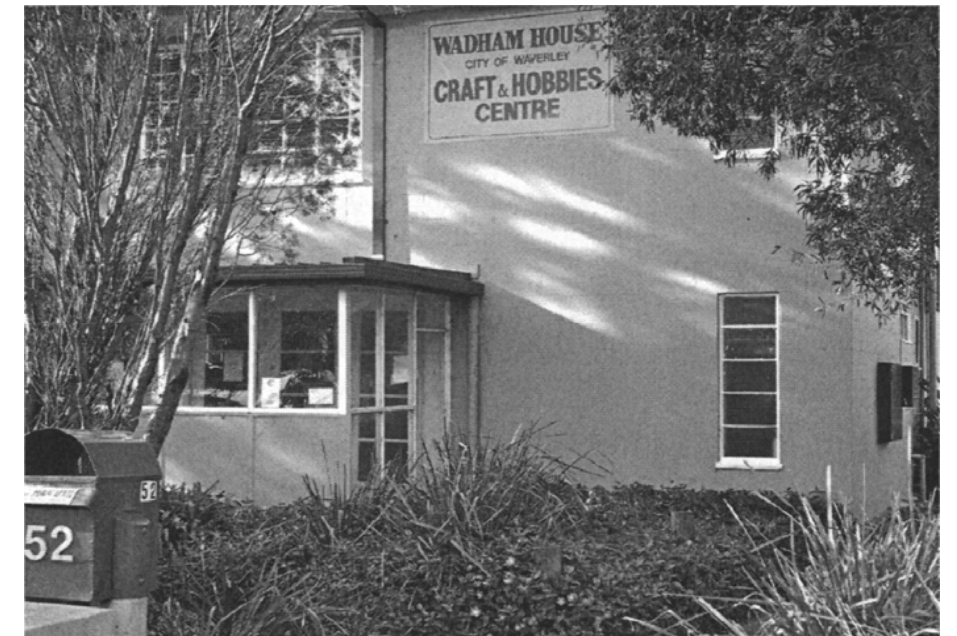
Journal of the Waverley Historical Society October 2012

### Established 1970

Incorporated in Victoria  
Reg. No. A 0006377 A  
PATRON  
Dr Morna Sturrock AM  
PRESIDENT  
Ed Hore 5233 1056  
SECRETARY  
Norma Schultz 9802 9332  
EDITOR  
Laurie Burchell 9807 1287  
EMAIL  
whs@keplcoin.au  
WEB SITE  
www.vicnet.net.au/~whsvic  
POSTAL ADDRESS  
PO Box 2322,  
Mount Waverley Vie. 3149  
SUBSCRIPTION  
\$20 per household  
We acknowledge the support  
of the City of Monash.

### Contents

Coming Events .....	2
Forthcoming Changes.....	2
Committee Members .....	3
Cycling in Waverley.....	4-5
Damper Creek Reserve.....	6
Vale Joan Kapphan .....	7
Vale Bob Marriott.....	7
Street Name Origins .....	7
Birthday Party .....	7
Historical Walk .....	8



### Wadham House

Located at 52 Wadham Parade, this building, originally a private home, is now a Council property. On the strong recommendation of Cr Pat Cotton and, as the sign proclaims, it had been acquired by the City of Waverley to serve as a Crafts and Hobbies Centre.

According to the Valuation Cards in the Rate Office it had been constructed in 1955 but Marie Cooper says her friend Shirley Fairbrother had lived there and, in fact, Shirley's father had built it in 1948. Whichever is correct it is one of the first homes built in the subdivisions near the railway station. Unlike others that quickly followed it was not in the double-fronted cream brick veneer style. Instead of bricks it has masonry' veneer walls. Two-storeyed, it is in exterior form a simple rectangle relieved only by elegant Art Deco windows.

Joseph Fairbrother sold the property to veterinarian A.R.Watson c.1965. Five years later, another veterinary surgeon, J. Innes, bought the house and surgery.

Innes in turn sold the house to the Waverley City Council in 1975 and moved his practice to Waverley Animal Hospital, 249 Waverley Road.

## FROM FRONT PAGE

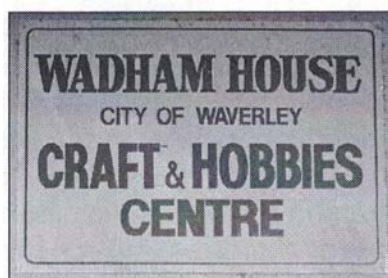
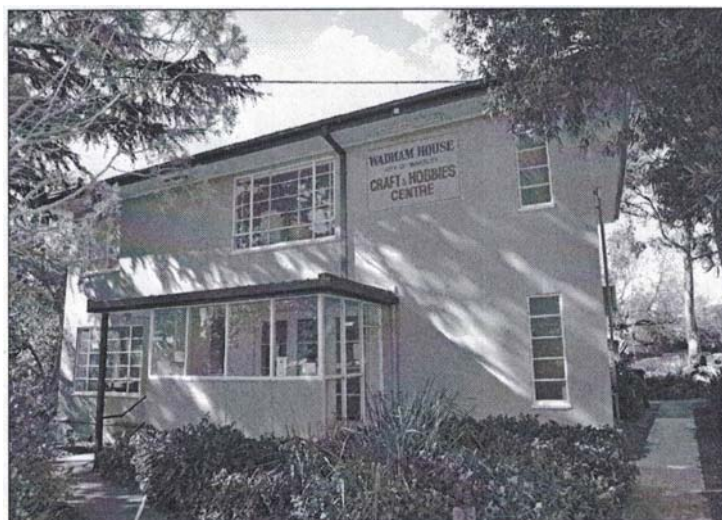
No 52 was converted to its present use, a Craft and Hobbies Centre, which today is used by about thirty groups, seven days a week, upstairs and downstairs, from 9am to 10pm.

One of the earliest of these were the Spinners who had the use of a mezzanine in the ground floor living room. The three bedrooms upstairs were pressed into service and part of the adjacent 'sun room' across the front of the house was converted into a secure store.

In 1975 the Council had built a 60-square-metre extension at the rear of the building as a Community Workshop with temperature and humidity controls for the use of the Society for Growing Australian Plants, which were then replanted in different public areas within the City of Waverley.

### Sources:

- Valuation cards Monash Council
- *Sands & McDougall Directory*, 1958 - 1974
- 'Lyn' at Animal Hospital, 249 Waverley Road
- Gerard Charnley, Co-ordinator, Wadham House
- Lodged Plan 23915, Land Office, Victoria
- Joan Faichney



Photos and Text: Laurie Burchell

## Coming Events

- October: Photographic display at Glen Waverley Library.
- 24 October: "Show and Tell" at our rooms, 1 pm-5 pm. Enquiries: 9807 3408.
- 22 November: Ordinary General Meeting with Christmas activities, commencing 8pm.
- 26 January: Open Day at our rooms starting 11am.
- **Wanted:** Donation or loan of Enid Gilchrist childrens Pattern Books (Bev Anderson 9894 7858). Also past editions of *Melway* (9802 9332).

## Forthcoming Changes

As foreshadowed at last month's General Meeting, and since confirmed by the Management Committee, more variety will be introduced into our annual programme by replacing certain general meetings with other activities such as excursions and walks.

Instead of only meetings with speakers, we will have, for instance, local historical walks, cemetery tours, open days, excursions, displays etc. every two months.

Moreover, all General Meetings with speakers will be evening meetings every two months in our upstairs room and start at 7.30pm.

As usual, the Annual Birthday celebration is planned for a Sunday afternoon.

Management Committee meetings will continue to be held on first Wednesday evenings at 7.30pm, except January.

A detailed list will appear in the February edition of *History Here*.

## VALE JOAN KAPPAN

We were very sorry to learn of the death recently of long-time member, Joan Kappan. Her funeral was on 2nd October and several WHS members attended.

To Will, our very deep sympathy.

(A longer article will appear in the February issue)

## VALE BOB MARRIOTT

We were also very sorry to hear that Bob Marriott died — on 3rd October. Born 30.11.1913, he was an early member of WHS and a well-known market gardener. He lived here all his life except for the last few years when he moved to Salford Lodge

## Street Name Origins - Did you know?

Many streets in the Monash area form a group that follow a theme. Here is a group in Mt Waverley that was created with a Military Commander theme. These streets were created on what was to be a War Service Homes Estate.

Savidge Ave - after Major General Stanley Savidge a WW2 commander

Morshead Ave – after Lieutenant General Leslie Morshead a WW2 commander

Montgomery Ave – after Field Marshal (Bernard Law) Montgomery

Vasey Ave - after Major General George A Vasey, a WW2 commander

Wingate Ave – after Orde Charles Wingate DSO a WW2 Major General, (creator of the Gideon Force and the Chindits)

Note that other Military leaders have been honoured in isolated separate streets elsewhere in the city. For example Monash Drv, Mountbatten Crt.

Philip Johnstone

## Our 42nd birthday ...

was held at St Philips Church Hall, Mt Waverley, on Sunday 7 October, 2012 at 2pm.

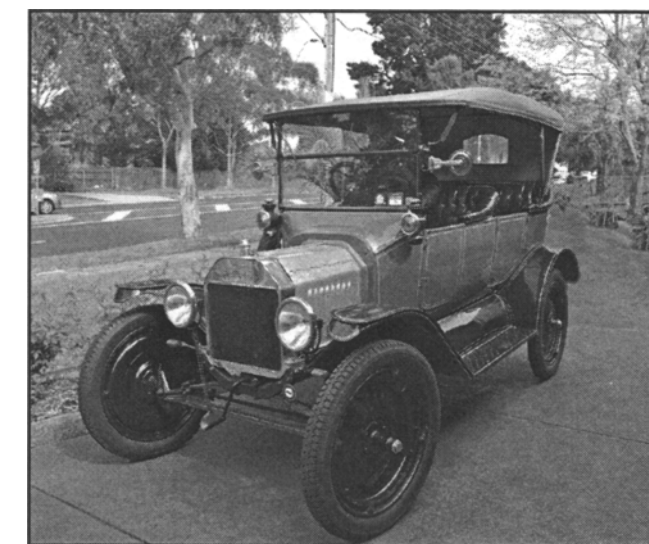
President Ed Hore welcomed 62 members and visitors, noting that there were 26 apologies. The hall was decorated in Spring colours, flowers, tablecloths etc. Anna Burke MHR and Dr Morna Sturrock gave short addresses.

Talks were given by one person from each table who had brought along an interesting item. Kevyn Brown drove to us in his 1915 vintage car ... he didn't have anything small! Other items included: an 1843 Bible, 100-year-old battery/ light alarm clock, old plans of estate subdivisions, 1950s/1 960s tin money box (pennies inside), an 1890 medallion watch chain necklace, set of three ceramic dogs (Doug Gunn said he had lots more at home!) and there were others.

High afternoon tea followed, thanks to the beautiful food supplied. Winners of the 13 raffle prizes were: (first) Frank West, (2nd) Nancye Crawford, (3rd) Ed Hore; lucky Edna Farmer won three prizes.

Thank you to all helpers on the day and to those who donated raffle prizes. The proceeds were \$220.

Beverley Delaney



Kevyn Brown's Ford Model T

## Damper Creek Reserve

There are over thirty reserves in the City of Monash, but only three or four of them attempt to recreate the vegetation that was here before European settlement. Damper Creek Bushland Reserve is one of those.

The northern end of the Damper Creek Reserve is quite close to the source of the creek near the Highbury Road/Leeds Road corner.

This linear reserve is noted for its pretty walk ways either side of the creek and its fern gullies along a tributary stream. There is a



Photo: Judy Borg

bridge some 15 metres below the end of Tarella Drive, while the earliest and most used foot bridge is Middle Bridge, linking Bengal Crescent with Alice St, Sunhill Rd and the the Junior Cam-pus of Mt Waverley High.

Near the bridge on the East side is a mushroom rock table with benches behind. On its front it bears a bronze plaque laid in 2008, with a ceremony to commemorate the 40th anniversary of the founding of the Friends of Damper Creek group that fought to keep the creek as a reserve, against the Council's intention to barrel drain it and join the east – west roadways either side.

There is a series of ponds at the southern end of the reserve close to the Park Rd entrance –the last large one, before the dam wall, brims with wild life: black ducks, a chestnut teal pair and other visitors, often wood ducks. And usually heard but not seen, are a large number of Pobblebonk frogs, making wonderful music around noon in summertime

It was not always so attractive. To quote from the official pamphlet, prepared by the Friends of Damper Creek Inc. it was, in the 1990s, '... an overgrown, weed-infested strip, little more than an open drain'.

'In fact the original plans call for this entire 1.5 kilometres of the creek between Stephenson's Rd and High Street Rd to be barrel-drained and sub-divided for housing.'

'Restoration of the Reserve and the Creek began in 1993. The original creek bed suffered serious disturbance and displacement when the sewer was built along the Creek bank.'

The Creek also suffered from serious erosion due to the fact that so much of the surrounding land has been covered by houses, roads and paths, which means that whenever it rained, water would run off rapidly into the drains leading to the Creek, whereas before European settlement runoff would have been slow.



Photo: Laurie Burchell

The Creek bed was stabilised in eight stages by installing large basalt boulders brought from farmers' fields in the Camperdown and Colac area. These are easily identified as volcanic in origin by the numerous gas holes on their surfaces.

The Reserve extends across High Street Road as far as the Riversdale Golf Course. After that the creek crosses both the golf course, and Huntingdale Road, then wetlands in the southern part of the Ashwood College grounds to ultimately flow into Gardiners Creek.

Judy Borg

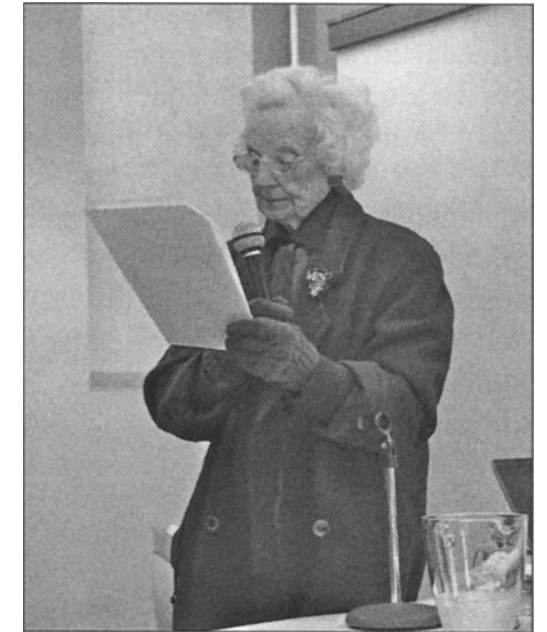
## OFFICE BEARERS and COMMITTEE MEMBERS 2012/2013

### Executive

President Ed Hore  
 Vice President Philip Johnstone  
 Vice President Marto Angelico  
 Honorary Secretary Norma Schultz  
 Honorary Treasurer Beverley Anderson  
 Membership Secretary Jean Walkerden

### Committee

Judy Borg  
 Margaret Boyes  
 Laurie Burchell  
 Pat Burchell  
 Beverley Delaney  
 Ray Price



Dr Morna Sturrock announces names of Office Bearers and Committee Members for 2012-13 at August AGM

### Delegated Appointments

Archivist and Curator Norma Schultz  
 Care and Concern Officer Irene Marriott  
 City of Monash Council Liaison Officer Ray Price  
 Database Management and Indexing Officer vacant  
 Delegates Association of Eastern Historical Societies Norma Schultz & Jean Walkerden  
 Equipment Officer Philip Johnstone  
 Function and Events Co-ordinator Beverley Delaney  
 Hospitality Team Judy Borg and Dianne Ward  
 Internet Webmaster/Computer Systems Officer Philip Johnstone  
 Librarian Ann Wardell  
 Newsletter Editor Laurie Burchell  
 Assistant Newsletter Editor Pat Burchell  
 Publicity and Education Officer Ray Price  
 Representative - Monash Reconciliation Group Norma Schultz  
 Research Officer No 1 Marto Angelico  
 Research Officer No 2 Clive Haddock  
 Safety and Risk Management Officer Margaret Boyes  
 Textile Curator Bev Anderson  
 Videographer and Photographer Chris Norton



## Cycling in Mt Waverley and Elsewhere

Coming to Mount Waverley after 43 years in Pascoe Vale South was a revelation. For the first time in all those years we are only five to eight minutes walk from a rail station and the local shopping centre.

But Stephenson's Road with all its traffic gave us pause for thought. Ranked by Vic Roads as one of the ten busiest in the City of Monash, it seemed to us to be a repetition of Bell Street West in Coburg. In other words, one where no sane cyclist would ever ride!

Imagine our surprise when from time to time we actually saw young twenty something males riding along there mixing it with all those cars and trucks each of which was going over 50 kph and each of which was at least twenty times the weight of the bicycle. How did they manage to do it? Then we realized why - they all know they are immortal!

But there were other reasons why cycling in Mount Waverley has less appeal. The whole of the City of Monash is bisected by valleys. That means lots of hills. By contrast Coburg and Brunswick are nearly all flat, thanks to that giant lava flow west of the Yarra all those countless years ago. You will not see this cyclist on Stephenson's Road. If we need to go, for example, to St. Philips we'll take a parallel route along Park

Lane and Smyth Street to reach the Scotchmans Creek path. This is all very well but we are now 30 metres down below our start point and cannot go further south without a steep climb up to Stephenson's Road. The same applies on our return and this is why we both have an E-Bike. But it still remains a great temptation to ride the rest of the way along the footpath that is illegal in Victoria unless you are under twelve or



One way to cycle without pedalling. Laurie in a pedicab leads cyclists in 12 km tour of Coburg's Historic buildings in 1993

Photo: Geoff Foletta

accompanying a child under twelve. However it is legal in ACT, Queensland and the Northern Territory! (Ride On June-July 2011). You can of course avoid both the heavy traffic and the hills if you use off-road paths.

Another way to use your bike in more distant places is to take it there on the train. But don't put it immediately behind the driver's cabin where the wheelchairs go. And of course you should not try to put it anywhere on the train during peak commuter travel times. In Canberra, where the only form of public transport is by bus,

you can hang your bike by special hooks on the front of the bus. When I was in Adelaide recently, to my surprise I was welcome to take my fold-up bike on the Glenelg tram. The conductor even helped me with it! Don't even think of doing this in Melbourne!

Another consideration - a more personal

one - is how far we should expect to go on any given outing. When I lived in Pascoe Vale South a routine ride was a return trip of 20 km to the State library in the city. On four occasions I did the Great Victorian Bike Ride (600 km in nine days including one rest day) twice with my older son and once with Pat. Since then we've ridden once into the CBD (20 km), returning by train.

Last year a friend of mine, Nicholas Elliott, who is Transport Project Officer at Moreland City Council rode to Sydney with his 16-year-old son, Geordie. In order

to avoid the slipstream of big trucks on the Free-way they basically followed the Olympic Highway, which runs west of the Hume. "We took ten days, staying mostly in caravan park cabins and rode about 1050 kilometres from Fed Square to the Opera House. I took a bottle of Yarra River water with me which I (un)ceremoniously dumped in Sydney Harbour."

Most people would think that using a bike to get around suburban Melbourne be a slow business

However a trial organised by the radio station 3AW in the 1990's had demonstrated otherwise. Later I decided to arrange one myself and recruited three members of the Coburg Historical Society, one to travel by train, another by tram and a third by taxi, the starting point to be Melbourne Town Hall and the finish the Coburg Town Hall. The cyclists were

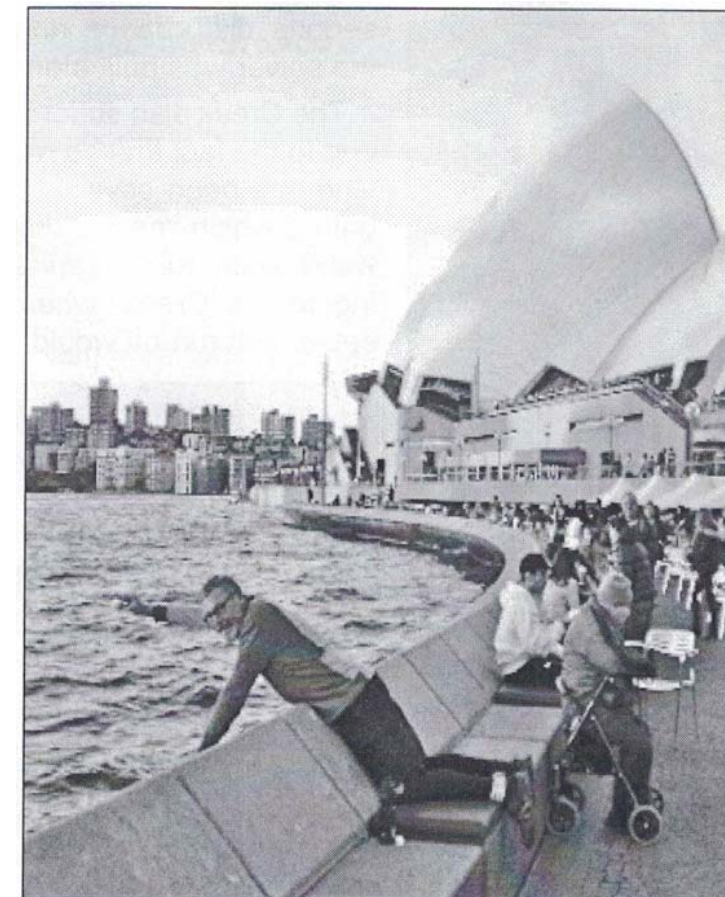
the first Mayor of Moreland, Mike Hill, and the other two myself and Nicholas Elliott, Moreland Council Transport Officer. On the date chosen all six met outside the Melbourne Town Hall. Mike rang Lord Mayor Ivan Deveson who came down from his office and said "Go"! The person travelling by taxi had only to cross the road to immediately get a taxi while the three cyclists straightway set forth up Swanston Street. The other two participants had each to walk one block to catch a train or tram. Naturally they may have had to wait a while. My wife who was waiting at Coburg to greet us was surprised to see the three cyclists come in first in order of age and only a few minutes apart while the chap in the taxi arrived a few minutes later. The

other two of course had to walk from the tram and train. Normally a person in a car would have had to spend time looking for a parking spot but not in this test. He said I'd passed them in Sydney Road because there are so many traffic lights as well as tram lines. Every time the lights were against them I was able to legally ride up on the inside lane to the beginning of the next intersection. The Age (19.10.2008 and 8.10.2011) had sponsored

other demonstrations of a similar kind, in 2008 and 2011 and with similar results.

Taking every thing into account we may therefore look forward to a cycling century.

Laurie Burchell



Nicholas Elliott (un)ceremoniously dumps Yarra River into Sydney Harbour.