

Vale—Marjorie Poulton

5.2.1934 - 22.2.2014

Marjorie (Marjie as she liked to be called) was born in Geelong the second child of Robert and Olive Jones and younger sister to Wilma. 1950 saw her Student Teaching at Hawksburn State School. In 1951 and 1952 she attended Melbourne Teachers College and from there beginning her teaching career at Shepparton North State School, Mt Waverley State School (2 tours of duty), Oakleigh State School, Notting Hill State School (including a period as Principal) and Strathcona Baptist Girls Grammar School.



They had four sons, Andrew, Phillip, David and Michael and Marjie was a wonderful mother to them all. She was devoted to her grandchildren and always looked forward to their visits, listening to their stories and activities.

Marjie had a strong sense of social justice – World Vision, Red Cross, Save the Children, Anglicare, Flying Doctor, Greenpeace, the Wilderness Society, and Save Albert Park.

In the 50's, when Avondale Grove became a quagmire, Marjie became volunteer secretary to the group who persuaded the Council to have the road graded!

Marjie was always there for people... calling in to make newcomers welcome in Avondale Grove and beyond... a good listener, willing to help where she was able; offering hospitality and becoming a lifetime friend to many... never to be forgotten.

She will be sadly missed.

Helene Durkin

The church was always a very central part of her life with many friendships made through the activities of the Church of England Fellowship and it was here she met her husband Kevin.

Kevin had bought a block of land at 18 Avondale Grove in 1950 prior to their marriage on the 5th January 1957. In 1956 a 'garage' was built as a small home, where they moved to after their honeymoon. Acting as 'builder's labourer', Marjie then helped Kevin with the construction of what was to become the family home.

Continued from Page 7.

erty. The Coffey family were the northern neighbours and occupied the current site of the Christian Scientist complex on Amber Grove. Across Stephenson's Rd and down to the Community Centre where a plaque recognises the site of the Closter Home and the brick paving at the entrance is made from the bricks of the old house.

Finally back to the WHS rooms for afternoon tea. The group was amazed at the secrets revealed in the district and most appreciative of MarJo's knowledge and presentation. More details of the route and the historical sites in Mt Waverley visited are available in a pamphlet available from the WHS and may be used to do your own walk. The tour was repeated on 6 April with a further 22 walkers.

Philip Johnstone

COMING EVENTS

2014

Sun 20 April, 10am ANZAC Wreath Laying at Monash City Memorial

Wed May 28, 2pm Social Gathering in the WHS Rooms

Wed Jun 25, 2pm Speaker Jeff Turnbull *Jordanville History* in the WHS Rooms.

Wed July 23, 2pm TBA

Wed Aug 27, 2pm AGM plus a Time to Remember - *Looking back at the 1930s*

Sun Oct 12, 44th Birthday Celebration

Wed Oct 29, 2pm *Open Day* (Monash Seniors and RHSV History Week.)

Did you know -

The origin of the name Brandon Park? This was the name given by Major George Steward, a commissioner of Police who purchased the land in 1902 and operated a sheep stud at the corner of Ferntree Gully and Springvale Roads.



Established 1970

Incorporated in Victoria
Reg. No. A 0006377 A

PATRON
Dr Morna Sturrock AM

PRESIDENT
Ed Hore 5233 1056

SECRETARY
Norma Schultz 9802 9332

EDITOR
EdCom

WEB SITE
www.vicnet.net.au/~whsvic

Email
whs@kepl.com.au

POSTAL ADDRESS
PO Box 2322,
Mount Waverley Vic. 3149

SUBSCRIPTION
\$20 per household

We acknowledge support of
the City of Monash.

With thanks to the Office
of Anna Burke MHR for the
printing of this newsletter.

Contents

Moroney House	1
From the archives - ANZACs .	2
Our query answered	2
How things panned out	3
Displays	6
Historical Walk - Mt Waverley.	7
Vale Marjorie Poulton.....	8
Coming Events	8
Did you know?	8

HISTORY HERE 207

Journal of the Waverley Historical Society May 2014



John Angelico

MORONEY HOUSE

This beautiful polychromatic brick residence in Chadstone was built by the Moroney family in the 1890s. They had arrived from Ireland in 1853 and settled as farmers in this area. In 1885 they opened brickworks and supplied locals with good quality building materials for many years.

In 1945 the house and 50 acres were donated to the Catholic Church, and it was used for a variety of purposes, mainly educational. Now it is a well-kept 19th century residence surrounded by large 21st century homes. Note the fine detail around the windows, eaves, and chimneys. It is one of the hidden delights of Monash.

Can you add to our knowledge of this house? Please share your memories with us.

Please note that General Meetings are now held every two months and are afternoon meetings starting at 2.30 pm. Special activities will be held in most alternate months. We are located above the Mt Waverley Library 41 Miller Crescent, Mt Waverley.

AN ANZAC REPORT

From the WHS Archives. This is a "Composition" extracted from an old exercise book of Madeline Law dated 29.11.1918 and printed here as originally written in blue ink with a nib pen.

Introduction

Last Saturday, a shipload of Anzacs arrived at Melbourne and received a great reception there. Among them, was one who had enlisted from our district, Glen Waverley, Driver Pegg(ie).

Preparation

When he arrived home, during the next week, he was welcomed at Glen Waverley. The "Welcome Home" committee arranged that he should be motored to the hall and a dinner was prepared.

The school-children marched from school to the hall singing patriotic songs. On reaching the hall they sang the national anthems of England and France. Then they formed a Guard of Honor for the Anzac who was received and taken to dinner by Cr. Foster. The welcome was ended by a dance at night.

Notes:

1. Madeline Law, the daughter of James Law, was aged about 12 at the time.
2. The Law family lived on 10 acres at the NW corner of Waverley and Blackburn Roads.
3. The Peggie property was north west of Waverley and Stephenson's Roads.
4. The school was Black Flat State School on the NE corner of Springvale and Waverley Roads.
5. The hall to which the children marched was diagonally opposite on the SW corner.

WHERE IS THE WHS?

Our rooms, which are located above the Mt Waverley library in Miller Crescent, are open each Wed (except over the Christmas break), from 1pm to 5pm, (or by appointment), for individual research and working discussion groups. When the library entrance door is locked at meetings, use the doorbell at the far left to gain entry. Members are asked to bring a plate of supper to general meetings which for 2013/14 are every second month.

OUR QUERY ANSWERED

What used to be in that bull-nosed verandah shop near the corner of Waverley and Stephenson's Rds? Thanks to a reader passing on our newsletter, we were contacted by the old owners, Margaret and John of Colbry Curtains. They bought an old red-brick milk bar in about 1975, painted it white and created a new shopfront. Later they added a workshop upstairs and changed the verandah to the one we now know. In 1997 they sold out and moved to Rowville, where they still operate. Thus the shop, while clearly the oldest in the strip, may not be as old as we first thought. Many thanks to the family for this information.

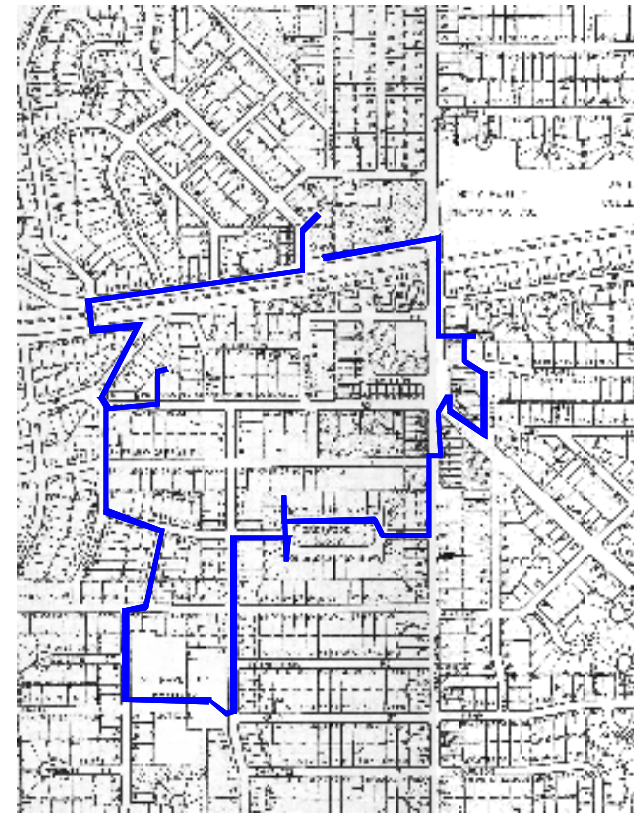
MarJo Angelico



Shop in 1978

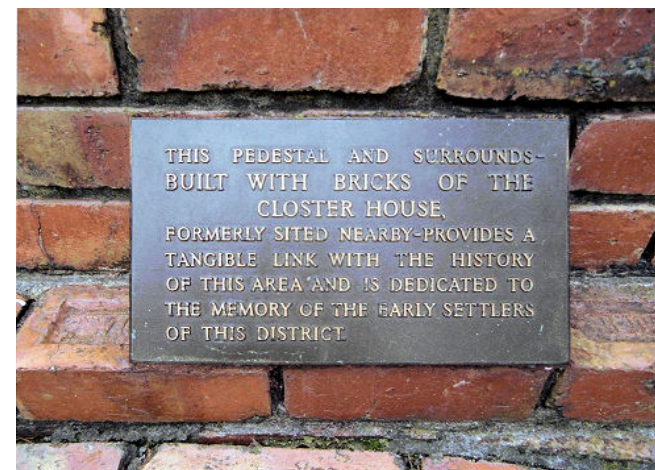


Shop in 1997



Mt Waverley Historical Walk

On Sunday 23 March, MarJo Angelico took a group of 25 people on a walk through Mt Waverley. The walk commenced from the WHS rooms and the carpark at the rear. MarJo showed early pictures of the site with the Closter cattle. We noted Youth, Senior Citizens and Community Centre buildings, and Wadham House which was originally constructed for a Veterinary practice. The route then went west on Miller Crescent to the Alvie Rd rail bridge where the original structure was shown augmented on the north side with the new bridge following duplication of the railway in 1964. The current Alvie Rd generally follows the access track to the Peck family farm house. MarJo then described the creation of the



Plaque at entrance to Mt Waverley Community Centre



MarJo leading the group under the Alvie Rd rail bridge

Glen Alvie Estate in 1928. which was intended to follow the style of a fully serviced country club with made roads and genteel recreation facilities. Unfortunately the 1930 depression resulted in little interest to purchase and in 1936 the Mulgrave Shire became owners of the estate following non payment of rates. The first house was built in 1946.

We continued along Pall Mall to Winbourne and up an unsigned laneway to a "secret playground" surrounded by houses. Then back down Woodstock Rd along Cranleigh Grove to the west entrance of Mt Waverley Primary School in Toirram Rd. The extant original school building opened in 1906 is located on land *donated* by the Peggie family while the current land to the west was purchased from the Marriott family. We noted the sympathetic construction of the new room on the south side in the style of the original rooms. The covered entrance gate with gabled roof is also sympathetic to the original building.

MarJo then led the group to Sherwood Rd and entered the "secret" SW corner area followed by the "secret" NW corner filled with native trees and birds. The route then took us across Stephenson's Rd where we noted the Masonic Centre which was originally the site of a Shell service station. The Shell station was later relocated north to the Waimarie Drive corner. Next was the site of Tait's store which is marked by a bronze plaque set into the footpath midway between The Highway and Waimarie Drive. Contemporary reports said that a bell in the Tait house *Waimarie* 100 yds away alerted the girls of a customer in the store. Around the rear of the shops and along Gallery Place to Waimarie Drv where we noted the house constructed from the *Waimarie* stables. Waimarie Drive is on about the original entrance to the prop-

Continued on Page 8.

AOEHS

On Sat 15 February 2014 the WHS hosted the February meeting of the Association Of Eastern Historical Societies. There were a few apologies but overall attendance reached about 24. WHS President Ed Hore was guest speaker on the topic of WW1 soldiers from the Waverley district. This was well received. Those of you who had attended a previous WHS meeting will have heard this interesting presentation. The meeting was followed by refreshments. The WHS raised the matter of promulgating and sharing reference sources among societies in the region.

SCHOOL CHILDREN VISIT

Vice President MarJo Angelico hosted a group of 24 Grade 2 children from Huntingtower School, Mt Waverley at the WHS rooms on 26 March for a talk on the history of the local area. For 7 year olds, they were a well mannered group with a surprising knowledge of their local area. MarJo covered the development of the district and some local historical landmarks together with a display of some artefacts. The picture shows MarJo, teachers and attentive children with an image of *Hazelwood* on the screen.



Philip Johnstone

Recent Speakers at the WHS

Many members attended the WHS meeting in February to hear the story of the Royal Park Campus of the Royal Melbourne Hospital in Poplar Road, Parkville presented by the guest speaker, Jeff Whittington who has worked at the campus for 40 years. Jeff related some of the names the facility had been called over the years and gave an illustrated outline of the 160 years of the organisation starting with the Immigrants' Aid Society during the gold rush years of the 1850s to its aged care emphasis in the early 2000s. We enjoyed hearing about Jeff's historical lantern tours of the grounds and heritage listed buildings at the Royal Park complex. If you were not able to come to the meeting (and are computer literate) go to the following website to read more about 160 years of history at Royal Park:

www.rmh.mh.org.au/archives.

Margaret Boyes

WHS DISPLAYS

The WHS mounted a display at the St Luke's Annual Fair on 15 March. A selection of aerial photographs and maps of the Waverley district and in particular some more details on the origin of the streets in the local Essex Heights area were explained by Norma Schultz, Margaret Boyes, Bev Anderson and Philip Johnstone. The display drew interest from the crowd many of whom recounted their early times in the local area. Maybe we might get some new members from this promotion.

Philip Johnstone

The WHS had use of the display cabinet in the Mt Waverley Library for March, this display is to be moved to the Glen Waverley Library for May. The display comprised directories, *Then and Now*, *Once there was Jordanville* and other books for sale. Together with WHS Membership Application Forms.

Beverley Delaney

Melway Street Directories and Subdivision Plans Wanted

We are still looking for Melway and other old street directories to complete our collection. We would also welcome any old subdivision and auction sale plans or advertising. These help us to establish the exact boundaries of subdivisions and their dates of creation.

How things panned out in the Shire of Mulgrave and its successor, the City of Waverley

Continued from HH206

Number of Septic Tanks installed each year in Mulgrave / Waverley

YEAR	INSTALLED
1955	565
1956	770
1957	924
1958	1074
1959	1450
1960	1291
1961	922
1962	1034
1963	1246
1964	1282
1965	964
1966	874
1967	838
1968	113
1969	1412
1970	1350
1971	1507
1972	1231
1973	975
1974	690
1975	420
1976	372
1977	8pp x 35 = 280
1978	Only 4 entries

Extracted from five volumes labelled 'Septic Tank Register,' Shire of Mulgrave/City of Waverley, 1955-1978

Such notifications as for Area No. 1531, 9 November 1957 which was reproduced on p.8 of the last newsletter and also in the same year for Area No. 1528 on 9 October, were too infrequent for the new residents of the Shire who, it seems, were equally concerned about having to put up with such rural necessities as outdoor toilets and the weekly intrusion of the nightmen collecting/ replacing pans. This may be inferred by the number of them who chose another alternative: septic tanks ... as the Table on the left shows. Closer inspection of the Council's Registers reveals that in 1955, 189 actually did the work themselves! And septic tanks were not cheap! (\$800 now, but then about \$60 plus around \$300 to have one installed).

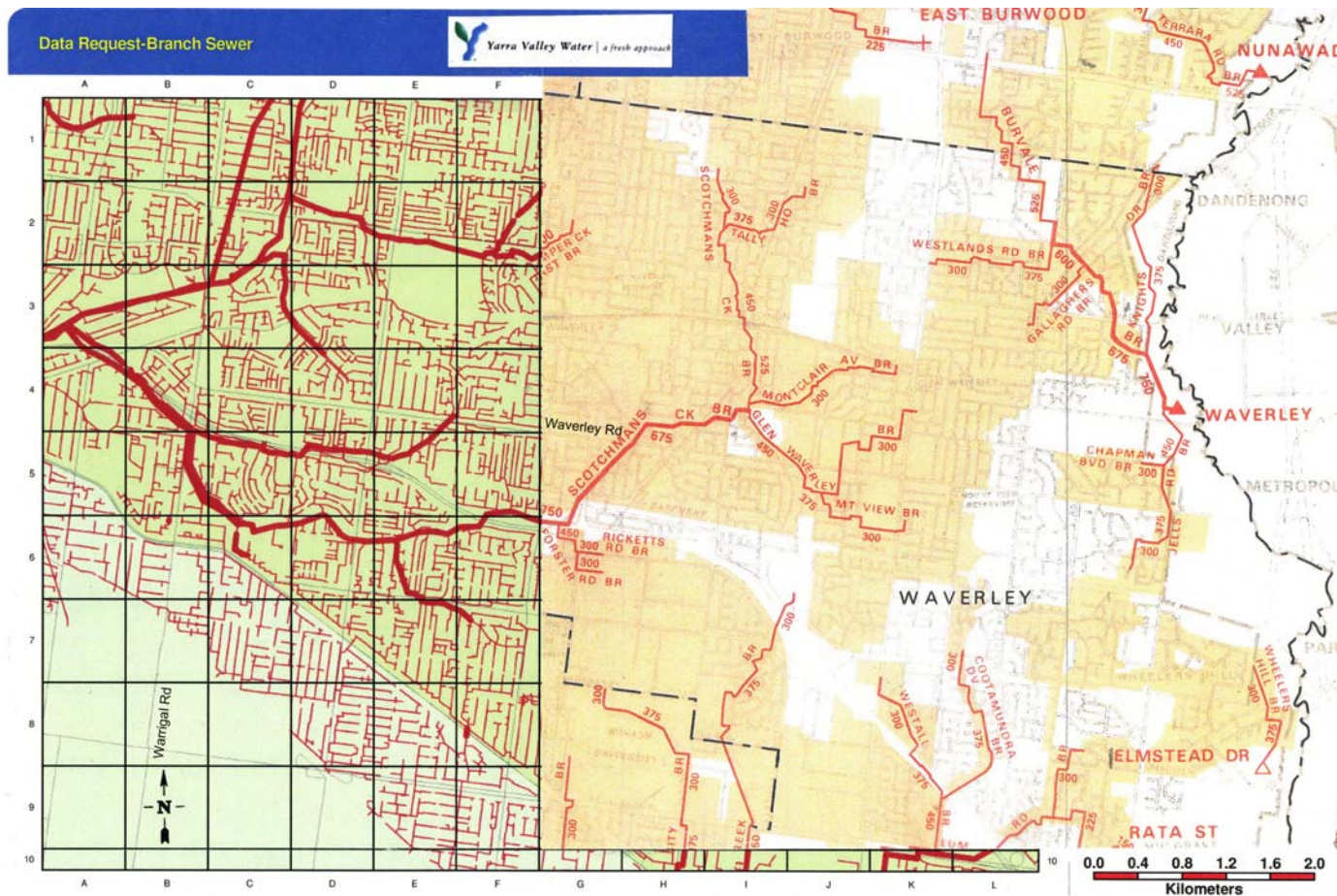
According to an article by Professor Miles Lewis:

The principle of the septic tank is generally understood to be quite different from that of the cesspit [cesspool]. The cesspit is simply a receptacle and must be emptied at intervals, whereas the septic tank is a treatment system which breaks down the contents and discharges a harmless liquid . . . Anaerobic bacteria are used to liquefy the organic matter and then aerobic bacteria to nitrify and mineralise the products.

Apart from cost and effort, the resident who chose a septic tank option had to gamble on how long it would be before the new sewerage system arrived in his area when the MMBW would compel him to connect to it, and at the same time disconnect and disable his septic tank.

It soon became apparent that septic tanks were not a complete solution. In an effort to give the residents the benefit of septic sewerage, Council had permitted these to be installed with hand pumps which had to be operated every second day or twice a week to force the effluent to the highest point on the home site where it could filter into the soil in the same manner as those which drained to a lower level. Inevitably such were not always pumped when necessary thus causing overflow and contamination.

Continued on Page 4.



This map showing the lines of sewers in the City of Waverley has been created by using a contemporary Yarra Valley Water map for the western half from a line 1.5 kilometres west of Warrigal Road where each grid square is 750 m x 750 m. The thicker red lines on this map are described in its Legend as Branch Sewers and all the thin ones as Reticulation Sewers. The other half of the map obtained from Monash Council is earlier and shows sewers in red but this time on a yellow background with thin grey lines representing streets and roads. It also provides us with the names of the sewers and their diameters in millimetres. The south-western portion of the map has been left largely blank because it is the responsibility of a different company: South East Water.

As a result, Council had then decided in 1963 that where the fall of land required, an electric pump had to be installed which automatically switched on.

For the remainder of this article, we are going to largely rely on memories of Laurie Ryan who was appointed by the Metropolitan Board of Works (MMBW) c. 1975 to oversee the sewerage work for the City of Waverley. He worked at the MMBW for 36 years beginning in 1954 as a junior draftsman. He later undertook further study in

Civil Engineering at RMIT. The MMBW gave him time-off a half day a week to help him gain the Diploma of Civil Engineering. Ultimately he became a Fellow of the Institute of Civil Engineers. He retired in 1990. A long-time member of the Waverley Historical Society, he is now a Life Member.

He had always worked in the Melbourne suburbs including during the late 70s when he was given the job of supervising the design of sewers for the City of Waverley.



This picture, adapted from others, seeks to show how Laurie Ryan used a pole to help maintain his balance while searching a large sewer for flood damage after heavy rain. Nowadays a robot camera is used to inspect sewers for damage.

In the 1960s, the Hewlett Packard area in the north-west corner of the intersection of Springvale and Burwood Highway was then the pan depot. (Being well controlled it was not a health hazard. It is well cleaned out now).

Some areas were seweraged even before streets were constructed.

At Braeside Park, a Furphy, a water tank on wheels, was used to spread the effluent. It was very smelly as Laurie discovered when he had on occasion, driven it himself! (Laurie told us on principle he was not prepared to order workmen to do anything he wouldn't do himself).

The table of septic tanks installed shown on p.3 would suggest that all properties had, by 1978 been connected to the existing sewerage system. But, in fact, a care-

ful examination of the sewerage areas proclaimed after 1978, reveals that additions were made in the City of Waverley in 1981 and 1986. The significant year would be the one where there were no longer any properties listed for pan collection.

Nobody noticed when this happened!

There was no celebration.

Laurie Burchell

Sources:

- Michael Cannon, *Life in the Cities*, Nelson, Melbourne, 1975, pp.158, 160, 161, 171, 175.
- Tony Dingle & Carolyn Rasmussen, *Vital Connections: Melbourne and its Board of Works 1891-1991*, Penguin Books Australia Ltd, Ringwood, 1991, pp. 32, 37, 42-44, 48, 69-78, 207-18, 229-252, 291-310.
- *Victoria Government Gazette*, 1957, p. 3267; 1958, p. 445; 1959, p. 345; 1981, p. 2955; 1986, p. 4344.
- *The Encyclopaedia of Melbourne*, Cambridge University Press, 2005, pp. 15, 454, 492, 493, 512, 538-9, 654-5, 762-4, 764, 771.
- Laurie Ryan interview, 11 September, 2013.
- Miles Lewis, 'Septic Tanks' (tinyurl.com/l19rh05).
- Susan Priestley, *Cattlemen to Commuters: A History of Mulgrave District 1839 - 1961*. John Ferguson, Sydney 1979, p. 152.
- Septic Tank Register, labelled 'Shire of Mulgrave/City of Waverley, 1955-1978'.
- Indexes to *The Waverley Gazette*, 1961-

Concerning the name: 'Mulgrave'

Originally a land parish surveyed in 1853, Mulgrave extended east to Dandenong Creek and incorporated Oakleigh on its western (Warrigal Road) boundary. The parish became the core of a municipality beginning with the 1857 Oakleigh and Mulgrave road district. It still covered nearly 60 square km on its declaration as the new City of Waverley in 1961

The name Mulgrave was retained for the south eastern quarter of both this new city and subsequently for Monash which incorporated both the cities of Waverley and Oakleigh.

Abridged from the article by Susan Priestley in *The Encyclopaedia of Melbourne*.