

7th Ringwood Scout Group

Personal Equipment List



PIMBA SCOUTS

CLOTHING

Scarf
Uniform (to be worn to and from District camps)
Long Pants/Tracksuit/Shorts
Old T-shirts
Old Long sleeve shirt
Old but warm Jumper/Top
Socks
Underclothes
Sleep wear*
Old Shoes/Runners
Raincoat/Warm waterproof jacket
Sun hat
Sun glasses if sunny
Thongs - for showers

NUMBER OF ITEMS DEPENDANT ON WEATHER AND DURATION AND TYPE OF CAMP

*All gear should be in a large **strong** bag and every item clearly marked with your name.*

You may be getting dirty, wet and muddy, so old clothes and comfortable shoes are advisable.

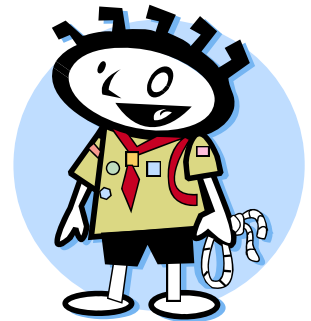
Check the weather map on the previous night's news and pack accordingly.

SLEEPING GEAR

Good quality warm sleeping bag with Inner sheet or Liner*
Warm blanket
Pillow
Air bed, sleeping mat or Camp Stretcher (not king size)

TOILETRIES/PERSONAL ITEMS

Towels (Medium Size)
Soap
Toothbrush
Toothpaste
Comb/Hair Brush
Handkerchief or Travel Pack Size Tissues
Sunscreen 15+
Insect Repellent
Waterproof bag for above



CLOTH DILLY BAG CONTAINING (UNBREAKABLES)

Plate (Dinner Size) Bowl, Cup
Knife, Fork, Spoon
Tea Towel

DO NOT BRING

Battery operated game machines, Walkmans, portable music players such as MP3 players and IPODs, radios, soft drink, lollies, mobile phones, pocket knives (inc. multi tools).

OTHER GEAR

Torch with Extra batteries
Garbage bag for dirty and/or wet clothes
Disposable camera (Optional)
Small back pack for day use
Personal First Aid kit
Water bottle
Personal medications, if any, clearly marked with name, dosage and any other pertinent information