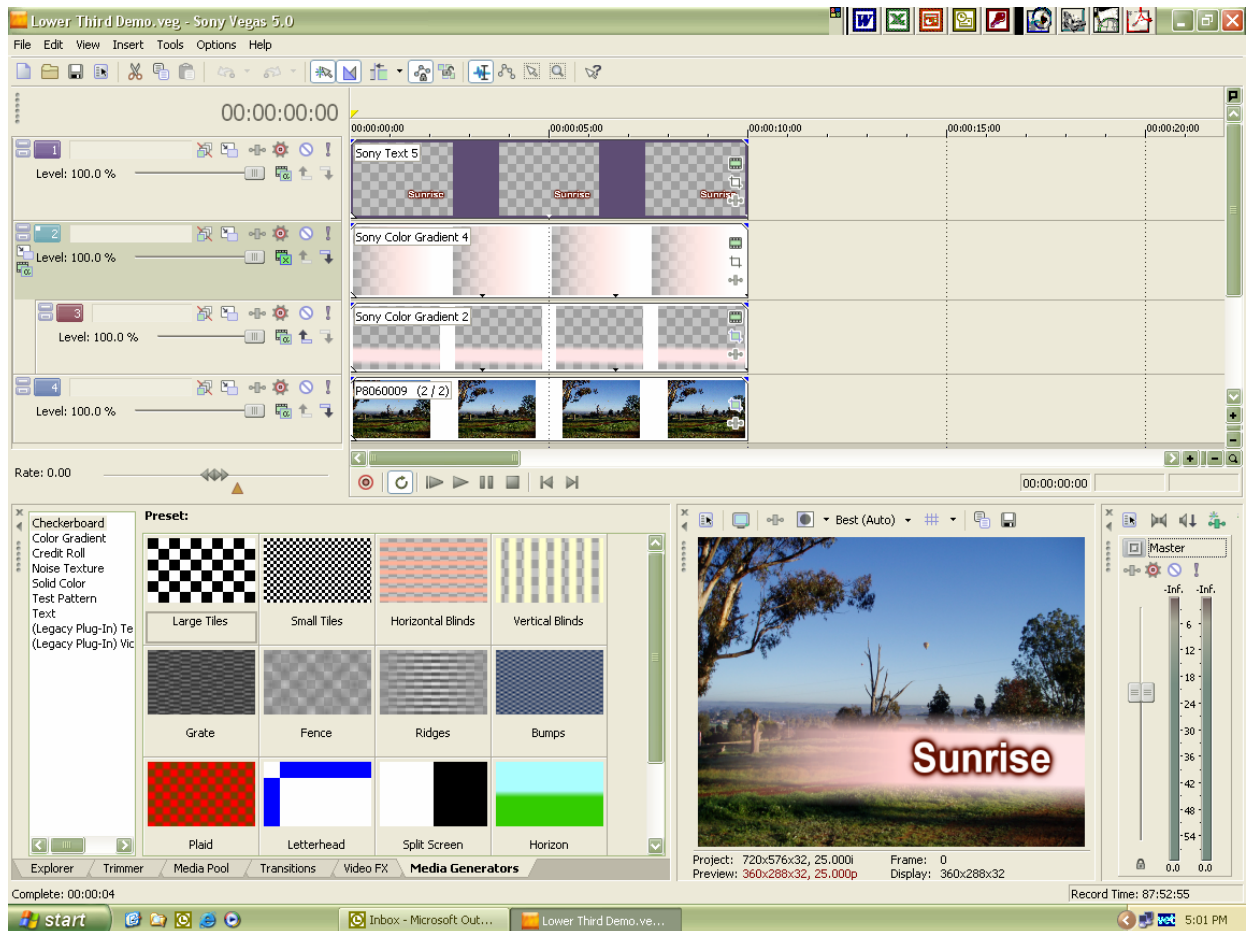


Creating lower third with feathered edges and gradient from left to right.



1. Layer 4 is Background layer
2. Layer 3 is a lower third with feathered edges.
 - Use vertical colour gradient with 4 control points to create feathered top and bottom.
 - Use event pan/crop to move lower third into position.
3. Layer 2 is a mask.
 - Use horizontal colour gradient with 4 control points from opaque to pink to white.
4. Make layer 3 a child of layer 2.
5. On layer 2 change compositing mode to "Multiply (Mask)"
6. Layer 1 is text with Outline and shadow.