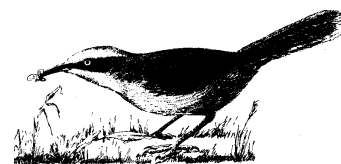


Murray Goulburn Branch Bird Observation and Conservation Australia Outings for 2008



President: Barry McLean

Ph 5798 1213

Email: barry_mclean@bigpond.com

Secretary: Don Roberts

Ph 5825 2404

Trip cancelled on days of Total Fire Ban.

Members requiring transport to an outing should contact the President or Secretary.

Date & Day	Details	Meeting Place & Time	VicRoads Map Ref
February Saturday 9	Benalla river walk	Benalla Rose Gardens, BENALLA 9.00am (Note early start for daylight savings!)	309 P6
March Sunday 16	Lima East (private property)	Swanpool Cinema, SWANPOOL 9.00am	47 H5 or 48 A5
April Saturday 5	Rushworth Forest	Murchison Post Office MURCHISON 9.00am	270 H10
May Sunday 4	Mangalore Flora Reserve	Mangalore Township, MANGALORE 10.00am	46 D8
June Saturday 7	AGM at Mooroopna, & visit to Gemmill's Swamp after lunch	20 Gemmill Cres MOOROOPNA 10.00am	272 D9
July Sunday 6	Wyuna (joint outing with Echuca Branch)	Wyuna Football Ground WYUNA Meet 9.50am depart 10.00am	32 C5
August Saturday 16	Fraser National Park	Rotary Park ALEXANDRA 10.00am	329 O9
September Fri 12, Sat 13 and Sun 14	Cocoparra National Park, NSW (camping)	Woolshed Flat Campground Cocoparra National Park 25 km from GRIFFITH Must book with Secretary	
October Saturday 4	Mount Samaria State Park	Swanpool Cinema SWANPOOL 10.00am	47 H5 or 48 A5
November Sunday 9	Strathbogie Ranges (private property)	Park next to Violet Town Hotel VIOLET TOWN 9.00am (Note early start for daylight savings!)	308 B7
December Saturday 6	Cussen Park Tatura	Cussen Park Rotunda Ross St TATURA 9.00am	270 F4

Extra Events

September 6, Saturday. We have again been invited to **Friends of Chiltern AGM**. Meet at **2pm at Chiltern Post Office** for an afternoon of birding, followed by dinner and AGM. More birding on Sunday, meet 9am at P.O. Make own accommodation arrangements.