

LOCAL HISTORY NEWS

Malvern Historical Society Inc.

Keeping Stonnington's History Alive!

December 21/January 22 - Newsletter No. 92

Message from the President

The Malvern Historical Society has endeavoured to keep the history of Malvern and all of Stonnington alive during the last year. Facebook has also been regularly updated, newsletters produced and a couple of events were held. Special thanks to Steve Stefanopoulos for his very interesting live stream talk on Zoom on the 'History of Stonnington Mansion' on 16 November.

Now as the year draws to a close we extend to our members and followers a message from the Committee - wishing each of you a blessed and peaceful Christmas and all the best for the coming year. May we all be able to celebrate this time with our families and enjoy the holiday period.

I would also like to say to all the members who have renewed their membership during the year - thank you. The Committee appreciates very much your continuing support even when we have been going through extremely difficult times and we have not been able to hold our usual face to face activities. The Committee is hopeful of resuming face to face activities early next year. We would also like to take this opportunity to remind members that your 2022 Subscription Renewal is due on 1st January. We hope you will be able to renew your membership again this coming year. Details of how you can make your payment are on the Subscription Form at the back of this Newsletter. One request is would you please make sure that you return the completed form so that we can make it easier for our Treasurer to be able to keep the records complete.

Thank you all and hopefully, we will be able to meet many of you face to face in 2022 at our various activities. Keep safe, have a Happy Christmas and New Year.

Lorraine Sage and the Malvern Historical Society Committee - ljsage123@gmail.com

2022 Membership

Membership of the Malvern Historical Society for 2022 becomes due on the 1st January.

Since 1972, the Society, a local community based organisation has actively collected, promoted and shared the history of Stonnington with the local community, schools and family history researchers.

The Society supports the work of the Stonnington History Centre at Northbrook through the passing on of all historic items to the Centre for the Stonnington History Collection, and through publicising the Stonnington History Collection and the work of the Stonnington History Centre. The Malvern Historical Society is 'Keeping Stonnington's History Alive' in many ways. When you become a member you are helping to preserve our history for present and future generations.

Members receive our newsletter, enjoy our meetings with guest speakers on local history topics and our regular walks within Stonnington. And best of all membership is only Individual \$13, Full Time Student \$9 and Family \$20.

Where can I research the former Cities of Malvern and Prahran and the present City of Stonnington?

The Stonnington History Centre is an archive dedicated to preserving and interpreting the history of the City of Stonnington and its antecedents, the former Cities of Malvern and Prahran. The Centre is a branch of Stonnington Library and Information Service and provides our community with local history information and services. The Stonnington History Collection includes the Malvern Historical Society collection.

Situated within the historic Northbrook, the Centre is located behind Malvern Library and near Malvern Town Hall. The centre's collection includes books, journal articles, photographs, building plans, maps, subdivision plans, rate records, newspapers, research notes and general local history information.

Rate books can help you to find information about the history of properties. Rate books are a valuable resource, as they record both the owner and occupier ('head of household'), and their respective occupations (if a non-resident owner, their address is also often given). In the case of a shop or business, it is the proprietor and/or the business name that is noted. The rate books also record other details such as the building type and size; or, if vacant land, the land size and/or allotment number. They can be used to find out when a house was built, by or for whom, and any changes in size, or type.

Sometimes a house name may also be given. Rate records for the cities of Malvern and Prahran were prepared annually from 1856 until amalgamation as the City of Stonnington in 1994.

Exploring Gardiners Creek (Kooyongkoot) Regional Collaborative Update November 2021

A network of councils, water, road and transport authorities, other State government representatives, peak sporting bodies and community representatives are exploring a potential regional collaboration approach for the Gardiners Creek catchment. Traditional Owners are also being engaged.

Gardiners Creek (Kooyongkoot) originates near Blackburn and flows through Burwood and Malvern East before following the Monash Freeway to the Yarra River (Birraring). The highly valued open space network surrounding the creek covers the cities of Boroondara, Monash, Stonnington and Whitehorse.

On Wednesday 27 October, over 30 stakeholder representatives from councils, water, road and transport authorities, state government departments, peak sporting bodies and community within the Gardiners Creek area met online to discuss the potential benefits of regional collaboration. The purpose of this collaboration is to achieve water, biodiversity, open space, and active/passive recreational goals as well as stronger cultural connection and beneficial outcomes for the creek as a whole.

Key outcomes from the forum were that a catchment rather than corridor approach would be taken.

Further information and enquiries: Matthew Kirwan

Gardiners Creek Collaboration makirwan@stonnington.vic.gov.au



**George Barlow, Gardiners Creek Glen Iris c1928
Stonnington History Collection MP60079**

Carreras Cigarette Factory 21 Cato Street Prahran

The building in these photographs was formerly situated at the southwest corner of Cato and Wattle Streets, Prahran, now part of the Prahran Square site. For many years, it was the factory of Carreras Ltd, the manufacturers of Craven A and Turf brands of cigarettes.

Prior to its use by Carreras, the building formed an annexe to the Maclellan & Company Big Store that fronted Chapel Street. Maclellan & Company purchased this Cato Street site in 1910 and shortly after erected this building. It was linked to the main Chapel Street store by bridges over Cato Street, and also a tunnel below the street.

Remodelling of the Big Store in 1930, after it became a Foy & Gibson department store, saw the rear store close and it was adapted for use as a cigarette factory for Carreras Limited. Carreras named their Prahran factory the Arcadia Works after their factory of the same name in London. The bridges over Cato Street, that had connected the building with the Big Store in Chapel Street, had been removed by the time these photographs were taken of the Arcadia Works in the 1930s. Different coloured render on two spandrel panels on the façade, visible in the photographs, is an indication of where the bridges were formerly located in the factory. The factory featured the Carreras black cat logo, which was cleverly fitted into the existing wreath mouldings on the parapets. The wreaths, which formerly had the Maclellan & Company 'Big Store' logo, are still visible today on the Chapel Street store.

Carreras remained in this building until 1957, when it moved with other cigarette manufacturers to a modern industrial complex, Virginia Park, at Bentleigh East. It was around this time that Carreras became part of Rothmans. After Carreras vacated the site, the building was demolished and the site was used as a Council car park for many decades. In recent years, the former site of Carreras has been redeveloped as part of the Prahran Square development. The archaeological dig as part of those works uncovered the lower walls of the Maclellan & Company/Carreras building, and what is thought to be the former tunnel that linked the factory with the Big Store in Chapel Street.

Peter Andrew Barrett



**Arcadia Works c1930
(Image: Royal Historical Society of Victoria)
Peter Andrew Barrett
-Architectural and
Urban Historian
September 2021
Photographs with
permission:
Royal Historical Society
of Victoria**



Woodmason's Dairy and Ice Works Malvern

The Woodmason family were successful market gardeners and dairy farmers, with substantial land holdings throughout the Malvern district. From 1859 the family owned land on the north east corner of Glenferrie Road and Malvern Road Malvern where William Woodmason cultivated a highly successful market garden.

The Stonnington History Collection includes a 1923 plan for the Woodmason's Melrose Ice Works, Melrose Ice Works Glenferrie Road Malvern for W. Woodmason. The architect is shown as Sydney H Wilson.



William Woodmason's Jersey herd c1870s
The photo appears to be looking south across Malvern Road,
Stonnington History Collection MP1248



Woodmason's Dairy cnr Malvern and Glenferrie Roads c1915
Stonnington History Collection MP1375



Melrose Dairy, Melrose Ice & Cool c1920s

Malvern Town Hall alterations

In 1926, alterations to the design of Architects Hudson and Wardrop, were carried out on the Malvern Town Hall municipal wing, containing public offices, Council Chamber, and Mayoral rooms.

Al Brimfire recently emailed the Society a copy of a photo, dated 19 Nov 1926, showing a group of men involved in the alterations to the Malvern Town Hall. Al's relative, builder Bill McReynolds, can be seen front right. Bill arrived from Scotland after serving in France in WW1 as a driver with the Royal Engineers.

He was living in Camberwell at the time of the photo.



Malvern Town Hall 19 November 1926

'Glenferrie Road - As I remember it and more' Dudley Lucas (Part 2)

Neil Lucas, the son of the late Dudley Lucas, former Malvern Council Town Clerk, has donated a copy of a talk Dudley gave at Koot Restaurant, Glenferrie Road, Kooyong. The date of the talk is not known but it is thought to have been given around the early 1970s. Part 1 of this article appeared in the previous issue of the newsletter.

Dudley Lucas (1905-1990) was born in Malvern and joined the staff at Malvern Council as a junior boy in 1925. He was appointed Town Clerk for the City of Malvern in 1951, a position he held until his retirement in 1973. During this time he was instrumental in the formation of the Malvern Elderly Citizens' Welfare Committee in 1958 (now mecwacare).

"Barkly Avenue to Llaneast Street had only two occupancies, a nursery on Barkly Avenue and Dr Player's residence and surgery set in a large garden on Llaneast Street. The nursery was established by one D Webley who created the Webleyana Erica by crossing the wild Erica that grew on the sandy areas of Wattletree Road toward Tooronga Road with a larger garden variety. The nursery was taken over by S Williams and continued for some years until it sold for £10,000 for the 122 foot Glenferrie Road frontage in 1922.

I remember that Dr Player's residence was demolished at about the same time to allow for the erection of the Post Office in Llaneast St and the shops facing Glenferrie Road.

In the next block just north of Wattletree Road was Syd Exton's Music Shop, a place for the lads to rendezvous on Friday late shopping night and where we amused ourselves playing his gramophone records. Cathies Butcher Shop was where the bank is on the corner with Gownie Wine and Spirit store adjoining it. Moran and Cato's grocery establishment was on the south west corner of Glenferrie Road and Wattletree Road, and from there to the railway shops had already been built on almost all the frontages.

Further south along Glenferrie Road were the railway gates at the level crossing with the signal box at the corner of Station Street. When I was very young there was a local who was frightening the daylight out of the maidens in Glenferrie Road. From out of nowhere there would come a figure who would simply bounce along with lengthy bounds or bounce to great heights causing much concern to users of the street. My father told of one occasion that the culprit was being pursued by the local constabulary and the railway gates were closed to road traffic. He bounced over the gate, landed midway and then bounced over the other gate. He was aptly called "Spring Heel(ed) Jack". It was only after many months of terror for the females that he was apprehended and brought before the courts charged with being a public mischief. He turned out to be the son of the then Vicar of St Georges Church. He had attached very strong springs to the heels of his boots.

I remember the opening of the most modern and luxurious suburban theatre at the time when the New Malvern Theatre commenced operations on the north west corner of Glenferrie and Dandenong Roads. For many years patrons were entertained not only by the films but also before the film and during interval by Arthur Firth and his twenty piece orchestra and the Wurlitzer organ. That was in the period of the silent movies so the orchestra played appropriate music through the night. Of course with the advent of the talkies orchestras became superfluous."



**Williams Nursery, south corner of Glenferrie Road and Barkly Street Malvern 1922
Stonnington History Collection MP2657**



**Llaneast Glenferrie Road Malvern 1903
Stonnington History Collection MP2626**



**Glenferrie Road, looking north, showing Malvern railway gates before the tramway was built c1900
Stonnington History Collection MP76**



**New Malvern Picture Theatre on the corner of Glenferrie Road Malvern c1921
Stonnington History Collection MP60714**

State Library of Victoria

Celebrating 30,000 maps and plans digitised at the Library

The SLV has just reached a significant milestone, having now digitised over 30,000 maps and plans in the Library's Imaging Studio and Scanning Studio by the Digital Production team. The more fragile rare maps are photographed in the Imaging Studio. The substantial Maps Collection includes Melbourne Metropolitan Board of Works plans (MMBW) which were produced to enable the design and development of the sewerage system across the Melbourne CBD and suburbs. The first series produced in the 1890s at the scale of 40 feet to the inch is the most detailed.

The Library's collection of auction plans was sourced from real estate agencies. They were produced to promote the sale of land subdivisions in and around Melbourne during the land boom of the 1880s through to 1930, when the Great Depression hit Australia. The plans are often highly decorative with colourful illustrations highlighting desirable amenities and scenic surrounds. There are also Army topographic maps. Over many years, including two World Wars, approximately 90 maps were created documenting the topography of much (but not all) of the state. The British Admiralty maps show maritime areas and adjacent coastal regions to aid navigation of vessels. The Victorian county, parish and township plans originated when the first land sales took place in the Melbourne CBD in 1837. They show the boundaries of each property in the area and mark the first owner or lease holder to take possession of allotments from the Crown. www.slv.vic.gov.au

Additions to the Stonnington History Collection

The Malvern Historical Society recently purchased this postcard of the Convent of the Sacred Heart (Sacre Coeur). Sacré Cœur is a Roman Catholic, independent, day school for girls, located in Glen Iris. Established in 1888, the school caters to over 700 students from Prep to Year 12.



Convent of the Sacred Heart (Sacre Coeur) postcard (undated)

Scenes from our past - 2022 Calendar

The Stonnington History Centre has released a limited edition wall calendar to showcase our vast collection of historic photographs and plans. Each month features a different image from popular subjects such as: people, places, occupations, schools, transport, fashions, building plans, events, and parks and gardens. These spiral bound calendars are printed locally on 350gsm 100% recycled stock, with plenty of writing space.

Plan your year ahead with ease using the Australian and Victorian public holidays and school term dates.

Purchase your copy from any of Stonnington's libraries, for only \$25.



Scenes from our past 2022 Calendar



JANUARY 2022

Sunday	Monday	Tuesday	Wednesday	Thursday	Friday	Saturday
						1 New Year's Day
● 2	3 New Year's Day Holiday	4	5	6	7	8
9	10	11	12	13	14	15
16 ○	17	18	19	20	21	22
23	24 ●	25	26 Australia Day	27	28	29
30	31 Term 1 Begins					

Prahran City Council, "Children crossing a main road at a supervised crossing", c1933

***Waiora* 321 Glenferrie Road Malvern**

Charles Washington Umphelby was born in 1826 near London and emigrated to Australia in 1842. Umphelby, a wine merchant, settled in Malvern in 1866 with his wife Lydia (Marzetti). He purchased *Nerrena* (later known as *Sorrett*) on the east side of Glenferrie Road. In 1886/7 he built a Victorian Italianate villa, on 3 acres (1.2 hectares) of land fronting the west side of Glenferrie Road, opposite St George's Anglican Church. The 11 roomed house with stables and coach house, was originally named *Cawood*, after an early family home in Ouse, Tasmania.

Within a year, Umphelby accepted an offer of £10,000 for the property from Bowes Kelly, partner of the new Broken Hill mining company.

Anthony Edwin Bowes Kelly (1852-1930), company director, was born in 1852 in Ireland. He and his family migrated to New South Wales between 1854 and 1860. Bowes Kelly worked as a jackaroo on Riverina sheep stations and as a drover. He became manager of Billilla Station on the Darling River near Wilcannia about 1875 and was eventually a partner. About 1881 he joined a Melbourne syndicate speculating in land around the Paroo River. He next fitted out a party to explore the Nullarbor plain region, and subsequently joined a group taking stock by ship to the Kimberleys, Western Australia, for the King Sound Pastoral Co. Bowes Kelly married Mary Fanny Hawley in 1888. They moved into *Cawood* in 1888, and re-named the house *Waiora*, a Maori word meaning 'living waters'. By 1889 the house had been enlarged to 17 rooms, including the addition of a billiard and smoking room. Staff included the children's nurse and governess, cook, housemaid, coachman and gardener. Mary and Bowes Kelly had 9 children, six of whom (two sons and four daughters) survived him. In 1901 Bowes Kelly purchased the Glenferrie Road mansion, *Moorakyne*.

Bowes Kelly had made his fortune when Broken Hill became the world's greatest silver mine. He purchased a share in the new mine for 150 pounds in 1884 and within ten years the share was worth 1,500,000 pounds. Bowes Kelly was appointed a member of BHP's first Board of Directors in 1885 and served continuously for 46 years. He was a member of Malvern Shire Council, 1892-96.

From 1912 to 1959, *Waiora* was variously run as a convalescent hospital, private hospital and nursing home. In 1959 the Mental Health Authority purchased *Waiora* and established the Malvern Clinic, the first day hospital for psychiatric patients in Victoria. In 1996, the old house was restored and became the home of Very Special Kids, Australia's first hospice and respite care home for children with life threatening illnesses. In 2022 Very Special Kids is embarking on a complete rebuild of Victoria's only children's hospice on the land between the original house, *Waiora*, and Adelaide Street.



**Charles Washington Umphelby
(undated) Stonnington History
Collection MP9541**



**Lydia Umphelby [nee Marzetti]
(undated) Stonnington History
Collection MP14443**



***Waiora* Glenferrie Road Malvern c1900
Stonnington History Collection MP5025**



**Anthony Bowes Kelly c1901
Stonnington History Collection MP2413**

Hornbrook Ragged School in Earl Street Windsor

Children's services have been provided since 11 March 1870, when the new schoolroom for the Free Scripture School (later known as the Hornbrook Ragged School) was opened. The schoolroom measured 11 x 8.5 m, cost £514, and could accommodate 150 children. The School had been operating in rented premises in nearby Duke Street since 1862. Ragged schools had been initiated in England to care for "gutter children" - homeless or neglected children who roamed the squalid streets in the industrial towns. In Melbourne, the movement was spearheaded by Mrs Hornbrook, the childless widow of a military officer. After the introduction of free state education in 1872, the role of the centre shifted towards pre-school care, and the name was eventually changed to Hornbrook Free Kindergarten. Prahran Council took over the service in 1992, renaming it Hornbrook Children's Centre.



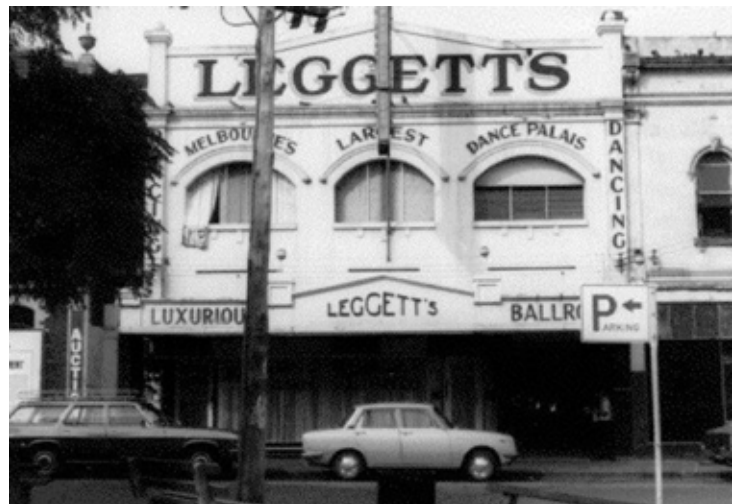
Hornbrook Free Kindergarten c1920
Stonnington History Collection PH6309

Leggett's Ballroom

Leggett's Ballroom was built in 1920 by Harry and Emily Leggett on a vacant block of land behind the Greville Street shopfronts (east of Porter Street). Maples Store used the land at this time for their horses. The first dance was held on 10 March 1920, although the Leggett's had already been running local dances for the previous decade at venues including the Prahran and St Kilda Town Halls. After purchasing property in Porter Street in 1924, the Leggett family lived on site. In 1926 the purchase of 130 Greville Street allowed the development of a street frontage to the dance hall, rather than the laneway that had been used until then. After further extensions in 1939, the dance complex covered 0.4 ha. It was the largest ballroom in Australia, teaching 50,000 people each year to dance. The cloakrooms could cater for the hats and coats of up to 4,000 dancers, scarcely enough for the peak crowd of 6,000. Harry and Emily's son, Phil, grew up in the business. In 1936 he married his dance partner, local resident Beryl Williams, and they took over the business when his parents retired in 1942. They lived on-site until the ballroom was sold in 1970. The complex was destroyed by fire on 16 April 1976, except for the 1926 Greville Street shops that still exist today. From c1979 -1995, these shops were used as a gymnasium, with tennis and squash courts occupying the rest of the ballroom site. These have now been replaced by town houses.



Leggett's Ballroom 1920
Stonnington History Collection PH9662



Facade of Leggett's ballroom in Greville Street, Prahran 1972
Stonnington History Collection PH2205

Victorian Blind Cricket Association

On the 7th April 1928 a playing field south of Gardiners Creek in Kooyong was inaugurated as the world's first permanent sports ground for blind cricketers. The first ball was bowled at a competition between the Victorian Blind Cricket Association and interstate teams. Mr William Paterson, a volunteer worker and advocate for blind people for over 60 years, was instrumental in acquiring and developing the sports ground and clubhouse on behalf of the Association for the Advancement of the Blind (now Vision Australia).

In October 2022 the Victorian Blind Cricket Association celebrates 100 years. The Association would like to hear from anyone who has any information, articles or photos regarding blind cricket in Victoria. chrive@optusnet.com.au

Malvern Historical Society Inc P O Box 184, Malvern Victoria 3144

I would like to

- Join the Malvern Historical Society
Renew Malvern Historical Society

Annual Membership Options

- Individual \$13
Full time student \$9
Family \$20

Date: Donation \$
TOTAL \$

Member information

Name/s
Address
Suburb Postcode
Phone Mobile
Email (please print) Signature

- Yes I'd prefer to receive the newsletter by email only.

Payment options

Paying by Direct Transfer
Commonwealth Bank BSB No: 063187 Account No: 10104883 Account Name - Malvern Historical Society
*** Please make sure the message/reference box states your name and what the payment is for.
***We would appreciate the return of your completed form by mail or by email.

Paying by Cheque
Please make the cheque payable to the Malvern Historical Society Inc. Kindly forward your cheque and completed form to the Malvern Historical Society.

I would like to assist with:

- Committee and administration
Newsletter
Walks
Talks
Afternoon teas & suppers

*Financial year: 1 Jan - 31 Dec

MHS website: www.vicnet.net.au/~malvern Tel: 0438 515 631 malvernhistorical@yahoo.com

Malvern Historical Society Inc. (A7682)

P.O. Box 184, Malvern Vic 3144 Telephone: 0438 515 631 malvernhistorical@yahoo.com
www.vicnet.net.au/~malvern

The Malvern Historical Society Inc is a member of the Stonnington History Committee, an affiliated member of the Royal Historical Society of Victoria and a member of the South Metro History Group.

OTHER STONNINGTON HISTORY CONTACTS

Stonnington History Centre, Email: history@stonnington.vic.gov.au
Tel: 8290 1360 www.stonnington.vic.gov.au/Discover/History
Prahran Mechanics Institute Tel: 9510 3393 www.pmi.net.au

Have you enjoyed viewing the photos in this issue?
Material for the articles has been researched from the Stonnington History Centre Collection. The database contains over 65,000 records. To view enlargements of photographs and to read more, just go to the website.
www.stonnington.vic.gov.au/Discover/History

East Malvern Community Bank Branch
300 Waverley Road, East Malvern
Phone 9563 6044

Bendigo Bank
Bigger than a bank

