

# LOCAL HISTORY NEWS

Malvern Historical Society Inc.

Keeping Stonnington's History Alive!

January 2020 - Newsletter No. 83

## 5 February Local History Walk Bates Street and Turner Street Malvern East

Wednesday 5 February 6.30 pm

Join members of the Malvern Historical Society for our walk in the Bates Street and Turner Street Malvern East area with its diverse history and range of architectural styles.

Bookings: Lorraine 9885 9082 Members: Gold coin Non members: \$5 All welcome!

## 19 February Creating a Tramway Titan Speaker: Warren Doubleday

Wednesday 19 February Malvern Town Hall 7.30pm

In 2020, Melbourne retains the title of having the largest electric street tram system in the world. The presentation will look at the tramway's history and why Melbourne retains the title of being a Tramway Titan. The Prahran and Malvern Tramways Trust played a part in this. A Public Private Partnership built a cable tram network in 1885, and the MMBW was formed in 1919.

Our guest speaker will be Warren Doubleday, Manager of the Melbourne Tram Museum collection, and Museum Services Manager of the Ballarat Tramway Museum. Come prepared to be intrigued by the facts and the related stories.

Malvern Town Hall, Corner of Glenferrie Road and High Street, Malvern (Upstairs Foyer - lift available). This is a free event. Supper will be served.

Bookings essential: Lorraine 9885 9082 by 16 February.

All welcome!



Laying of tram tracks Glenferrie Road Malvern 1910  
Stonnington History Collection MP12032

## Malvern Historical Society 2020 Membership Renewals Are Now Due!

Our subscription covers the 12 month period 1 January 2020 - 31 December 2020.

Our Society operates to preserve and further encourage interest in the history of Stonnington. We actively support the Stonnington History Centre. We are a not-for-profit group and our dedicated volunteers undertake the administrative work and arrange our activities.

Annual subscriptions are an important component of our income. Subscriptions for 2020 became due on the 1st January. We value your membership and we look forward to your continuing support of the Society. New members are always welcome.

Please complete and return the form you'll find on page 8 of the newsletter. Direct Transfer is available:  
Commonwealth Bank BSB No: 063187 Account No: 10104883 Account Name - Malvern Historical Society.

\*\*\* Please make sure the message/reference box states your name and what the payment is for.

\*\*\* We would also appreciate the return of your completed form by mail or by email.

Cheque can be sent to the Treasurer, P O Box 184 Malvern 3144. If you are unsure if you are financial please contact Lorraine ljsage@comcen.com.au  
Lorraine Sage President 9885 9082

## Seminar: Early Melbourne suburbs 1835-1880

---

1 February 10am - 4pm.

The RHSV and the Genealogical Society of Victoria will co-present a full-day seminar to give participants a deep understanding of the forces and influences which shaped Melbourne's early growth. The seminar will be opened with a overview by Gary Presland on how Melbourne's geography shaped its development. A range of historians will explain the development of their locale: Footscray (Carmel Taig), Prahran (Steven Haby & Judith Buckrich), Heidelberg (Graham Thorley) and 'Up Sydney Road'-Brunswick & Coburg (Cheryl Griffin).

The seminar is designed for a broad audience including those who are researching their family or community history and want to understand the why, who, when, what and how of Melbourne's growth. Refreshments: Light lunch & refreshments provided throughout the day.

*www.historyvictoria.org.au*

## Holy Eucharist 1241 Dandenong Road Malvern East

---

In 1929 two new Catholic centres were founded as part of St Anthony's Parish Glenhuntly, St Patrick's Murrumbeena and Holy Eucharist Murrumbeena North in Dandenong Road. The foundation stone at Holy Eucharist in Dandenong Road was laid by the Archbishop of Melbourne Dr Daniel Mannix in September 1929. The red brick building had a hall downstairs, which was used as a church on Sundays, with a sanctuary at one end. During the week the church seats were pushed aside and the building became a school. The early school, with an enrolment of sixty five students, was run by two Presentation Sisters. The Presentation Sisters staffed the school until 1973, when the first lay Principal was appointed.

In 1936 the church was linked to St Mary's East Malvern and it was not until 1946 that the parish was separated from St Mary's and became a parish in its own right. In 1959 it was decided that the red brick church building was no longer adequate. The new church, designed by architects Alan Robertson & Associates, and built by Holywood Constructions cost £55,000. It was officially opened by Archbishop Justin Simonds in 1962. Neighbouring East Malvern parishes Holy Eucharist and St. Mary's first partnered in 2008. In 2016 they formally became one Parish, 'Holy Eucharist and St. Mary's Malvern East'. The Holy Eucharist School closed in 2017 after enrolments dwindled to just 28 students. On 31 January 2019 De La Salle College Malvern opened a new, dedicated Year 9 Campus in Malvern East in the former primary school buildings.

In 2019 Peter King photographed a work of children's art hanging in the former Holy Eucharist Primary School building. The felt art work, by the Grade 5 and Grade 6 students, won First Prize in a Catholic Education Office art competition. The theme for the artwork was Reconciliation, with the circles showing that there is no beginning and no end, the bright colours were chosen to show hope and stitching was added to represent fragility. At the time the Principal was Bernadette Kelly and the Art Teacher was Cathy Train.



'Reconciliation' Holy Eucharist Primary School c2010  
(Image: Peter King)

## eBay discoveries in December

Di Foster recently purchased a range of items on eBay on behalf of the Society. They included a Convent of the Sacred Heart (Sacre Coeur) East Malvern postcard, a Malvern East Central School Prep 1936 postcard and a Prahran Patriotic Society badge. There is already a 1931 photo of the East Malvern Central School Mothers' Club in the Stonnington History Collection.

Thanks Di and a special thank you to members who add donations to their subscriptions which allows us to make these valuable purchases.



Prahran Patriotic Society badge.



Convent of the Sacred Heart (Sacre Coeur) postcard



East Malvern Central School Prep 1936 postcard



East Malvern Central School Mothers' Club 1931  
Stonnington History Collection MP7393

## Prahran Square

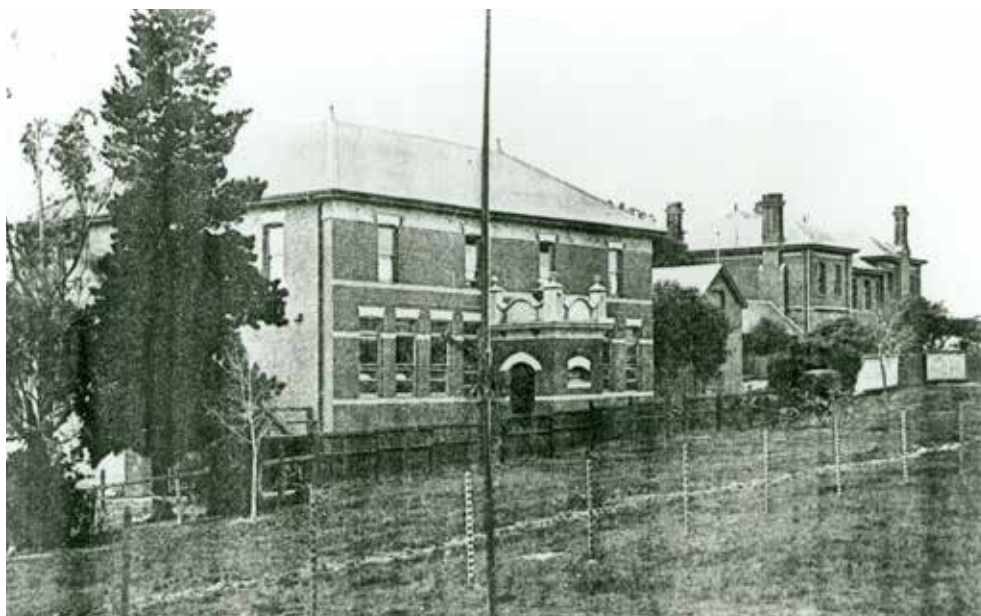
Prahran Square is the City of Stonnington's transformation of the old Cato Street car park in Prahran into an urban parkland above an underground car park. Recently three beautiful bees landed in Prahran Square, taking up residence at the top of the terrace. The work of Australian artist, Fiona Foley, 'murnalong' celebrates bees for their significance in our global ecosystem. Its title 'murnalong' is a local indigenous Boon Wurrung word, meaning bee.



'murnalong' 2019 Image: Prahran Square Facebook 2019

## **Robert Campbell Edwards**

Irish born Robert Campbell Edwards (1862-1946) arrived in Australia in 1877 with his widowed mother and younger brother. In 1881 Edwards established a successful tea and coffee business. In 1904 the Edwards Ensign Tea Merchant building was erected in Melbourne, the first 5 storey business in Flinders Street. In 1921 a fierce fire completely destroyed the building. Edwards was not only an astute business man, but he also dealt in real estate. In 1897 he had purchased *Glenburn* a Victorian brick mansion of fourteen rooms and stables (c1891) fronting Gardiners Creek in Glen Iris. In 1908, 'following a generous offer made by Edwards, the property was bought by the Federal Conference of Churches of Christ, for the price of £1,500.' *Glenburn* became the new College of the Bible providing accommodation and facilities for students. The College of the Bible offered theological education and ministerial training. As mentioned in the previous newsletter Robert Campbell Edwards, a successful tea merchant and philanthropist, purchased *Northbrook*, High Street Malvern, as an investment for his children, around 1929. In 1974 the name of the College of the Bible property *Glenburn*, in Elm Road Glen Iris, was changed to Campbell Edwards House. Malvern Council purchased Campbell Edwards House from the Road Construction Authority in 1989. Ten years later the mansion was destroyed by fire.



***Glenburn*, part of the  
College of the Bible,  
Elm Road, Glen Iris  
1912**

**Stonnington History  
Collection MP1776**

## **Burke Road bridge J.B. Cooper 1935**

'Thirty-seven residents of Gardiner prayed, in September, 1872, for a bridge over Gardiner's Creek, in a line with Burke Road. The prayer was not answered until 1874. In February of that year the Shire of Gardiner, at the request of the Boroondara Shire Council, accepted a tender for the erection of a bridge over Gardiner's Creek, at the intersection of Burke Road. They complied with the wishes of the Boroondara Council, believing the plans were satisfactory. Later they found that they had blindly committed themselves to the building of a bridge, the design of which did not meet with its approval. The Shire of Gardiner complained that the plans and specifications for the bridge had not been submitted for its inspection. Information was sought, regarding what provision had been made for carrying away the flood waters, that, at times, swamped the flat land on the Gardiner side of the creek. John Foy complained on April 9, 1874, that the way of the work was such that the embankment at flood time would be washed away.

By April 16, the Shire of Gardiner members had "made up their minds that the works as being carried out would inflict serious injury on some of the ratepayers". In their opinion, the work called for the construction of an



**Burke Road, Gardiner c1890  
Stonnington History Collection MP2**

arch, thirty or forty feet in width, through the embankment, or, alternatively, it was suggested the bank should be raised to a height above the bridge, instead of being placed a foot below. Their fears of the Gardiner received confirmation on May 4, 1874 when a flush of water came down the creek, washing away a portion of the embankment, in addition to weakening the structure of the bridge. The Shire of Gardiner called upon the Boroondara Council to make the necessary repairs at once. In the meantime they closed the approach to the bridge on the Gardiner side of the creek. The bridge was completed in September at a cost of £1,063/1/8 of which sum the Shire of Gardiner paid under protest £200 for its Council was dissatisfied with such "an ill-devised and imperfectly constructed work".

*The History of Malvern* John Butler Cooper 1935

### 3 Buddle Drive Toorak

In 2019 Heritage Victoria's Executive Director recommended that the Brett House, 3 Buddle Drive Toorak, be included as a Registered Place in the Victorian Heritage Register.

In 1954, Sheila and Alan Brett acquired the newly subdivided site on Buddle Drive following their move to Melbourne from Adelaide. (Buddle Drive is named after Cr Leslie John Hay Buddle J.P. Mayor, City of Prahran) The Brett's commissioned Robin Boyd, who was then part of a practice with Roy Grounds and Frederick Romberg, to design the new house for the site. Georgian Revival was a popular style in the suburb, and the Bretts called on Boyd to design them a contemporary home with a Georgian sensibility. The house was constructed by Clissolds of South Melbourne and completed in 1955. The Brett's sold the property in 1959 and it was owned by the Owens family from 1960-78. The Owens carried out minor changes such as replacing the looped chain to the balcony with the current balustrade.

The house was constructed by Clissolds of South Melbourne and completed in 1955. The Brett's sold the property in 1959 and it was owned by the Owens family from 1960-78. The Owens carried out minor changes such as replacing the looped chain to the balcony with the current balustrade.

The Brett House is situated on a flat block on a short cul-de-sac in Toorak. It is a compact, two storey home constructed of light-grey concrete brick. The house faces west and looks over the Yarra River. It is symmetrically composed and built to a rectangular plan with a balcony and extended eave to the front elevation. It has four regularly spaced openings on each level of the street facing elevation, framed by narrow columns. The ground floor interior includes a lounge room, kitchen, dining room and bathroom. The main ground floor rooms contain French doors which open on to garden areas. The kitchen contains original cupboards, countertops, door pulls and a roller blind. Bagged brickwork, painted white, features in the lounge room. A largely original timber stair and timber lined stairwell leads to the first floor. The first-



3 Buddle Drive Toorak (Image: P. Nigro 2020)

floor landing overlooks the rear garden through a continuous row of casement windows. It contains a study nook of original timber joinery. A small bedroom is adjacent to the study nook. Two additional bedrooms open on to the balcony. There is also a refurbished bathroom on the first floor. The small rear yard includes areas of crazy paving, lawn and stands of bamboo and other shrubs. There is a non-original detached car port to the rear.

The Brett House is architecturally significant as a notable example of a post-war Modernist residence. It displays a range of characteristics that are typical of the class, including its compact size, restrained design, rectilinear form, connection to the outdoors and highlighting of timber joinery and brickwork in the interior. The Brett House is notable for its distinctive Modernist interpretation of the Georgian Revival home. It displays the skilful response of a renowned architect to client requirements for a domestic commission. <http://heritagecouncil.vic.gov.au>



### Claude Yates and Ed Buckley

This is a photo of MMBW staff members, tram conductor Claude Yates and tram driver Ed Buckley. Claude, wearing his conductor's satchel, has the number 2835 on his cap. Ed has the number 2122.

Claude Yates and Ed Buckley  
c1950 Stonnington History Collection  
MP1756



E. S. & A. Bank, Malvern 1907 Stonnington History Collection MP8061

## South east corner of Glenferrie Road and High Street Malvern

Land on the south east corner of Glenferrie Road and High Street was purchased by the E.S. & A. Bank in 1885. A condition of sale was that the bank erect on the land a 'substantial brick building to be used as a branch bank', within 24 months. The single-storey four roomed brick E.S. & A. Bank was built in 1888. The first manager was Frederick Leonard. In 1907 a second storey, including residential quarters for the manager, was added at a cost of £1400. The two storey building was demolished in 1958-9 and replaced by the current building in 1959.

Heritage Victoria's Statement of Significance notes the importance of the current building. Completed in 1959, the former English, Scottish and Australian (E.S. & A.) Bank is of architectural and historic significance at a State level as being one of the finest of a series of banks designed by the then head of the bank's architectural department, Stuart McIntosh. It represents one of the most innovative and sophisticated architectural responses to the bank as a building type in the 1950s. It also represented a radically fresh and progressive image sought by a traditionally conservative client. The design is also indicative of moves by architects in the late 1950s toward greater use of decorative material,



vener and sculptural modelling in an attempt to satisfy needs beyond simply the functional and structural. The bold abstract design, conceived with the assistance of architect Robert Garner, is composed of what appears from Glenferrie Road to be a solid mass clad in Gosford sandstone which hovers above a plane of black granite laid with visually prominent white horizontal joints. On the street corner, a series of six dramatically cantilevering horizontal planes, spaced 450mm apart, interlock onto this massive form. They provide sun protection to the north and west windows of the five metre high banking chamber within and result in a series of deeply cast shadows emphasising the sculptural nature and horizontality of the building composition. The sun hoods

epitomize the period interest in the brise soleil\* and its frequent exaggerated expression. Below these 1.2m deep fins and separated by a band of glass is a base of horizontally coursed Castlemaine slate which inside houses a garden of indoor plants. On the High Street elevation, the composition of interlocking forms is completed by another plane of black granite.

The bank interior is also significant in that it contains the abstract sculptural reliefs cut from steel and finished in brass and copper designed by the great Melbourne artist Charles Bush. The major relief which follows the theme of "Man and his Aspirations" is located above the counter while, sandwiched between the teller counters, are rectangular panels elaborated with similar designs. A daring touch is the use of pink glass to the north and west windows which softens the interior colour scheme and contrast with the reflected light from the pale blue soffits and strong lue green roofs of the external horizontal fins.

The bank's prominent corner siting directly opposite the imposing classical lines of Malvern Town Hall (1885) further adds to the building's significance. A striking contrast in architectural modes of composition is established which is nonetheless compatible with the adjacent mix of building types lining the shopping strips of Glenferrie Road and High Street and the institutional and residential buildings to the building's rear. The design of this suburban bank has in Victoria only one other and contemporary equal in terms of compositional dexterity, that of Chancellor and Partick's design also for the same banking firm, the E.S. & A. Bank at the corner of Elizabeth and Franklin Streets, Melbourne 1958 [www.heritage.vic.gov.au](http://www.heritage.vic.gov.au)  
\*Brise soleil, (French: lit. "sun breaker"), is an architectural feature of a building that reduces heat gain within that building by deflecting sunlight. [https://en.wikipedia.org/wiki/Brise\\_soleil](https://en.wikipedia.org/wiki/Brise_soleil)

1284-1286 High Street, Malvern 1984 Stonnington History Collection MP8402

## **New members**

The Society would like to welcome our latest new member Paul Barker, David Umphelby and David Stray.

## **From the Stonnington History Collection**

David Stray has donated research notes on the work of architect Edward Fielder Billson.



Revell, 9 Toorak Avenue Toorak (Image:Nigel Lewis) 1992  
Stonnington History Collection MP13072

## **Taking Local History to the Community**

Congratulations to the Stonnington History staff, Simone, Janet, Jack and Julia for the fantastic 'Well Played Exhibition'. Visitors to the exhibition enjoyed the stories about local sporting heroes and learnt about how our favourite games have changed over the decades. Many significant sporting items were on display. Thanks to Pat and Lorraine for leading our recent local history walks around the Hampden Road area in Armadale and the Abbotsford Avenue Malvern East area.

Congratulations to Di Foster, a Malvern Historical Society volunteer for over 30 years, who was awarded a 2019 Higgins Community Award at a ceremony hosted by Katie Allen MP, Federal Member for Higgins. The awards recognise the dedication of our local volunteers who help others and their community group.

The Society congratulates Cr Steve Stefanopoulos who was returned as the Mayor of the City of Stonnington. Steve was re-elected for a third term at a Special Council meeting in November. Cr John Chandler became Stonnington's first Deputy Mayor.



Cr Steve Stefanopoulos, Mayor, City of Stonnington  
and Di Foster 2019 (Image: City of Stonnington)

## **Australian Libraries Join Forces to Build National Digital Collection**

Australia's national, state and territory libraries have come together in a world-first collaboration to build a national digital collection, with the new national edeposit service (NED) launching this week.

For more than 100 years, publishers have been legally required to deposit published works in Australian libraries. With the creation of NED, Australian libraries now have the digital infrastructure to preserve Australia's documentary heritage for future generations, in the same way they always have for print. This world-first national edeposit system highlights Australia's library sector as a global leader, and sets a wonderful precedent for future projects. Australian publications in electronic form will be captured and made available through NED. Book-lovers, researchers and curious minds can find Australian literary works alongside everything from the government's Australian Antarctic Strategy to newsletters, fanzines and community publications.

Publishers and authors can now upload electronic books, journals, magazines and newsletters through the NED website. Depending on the publication's level of access, the general public can access the collection online through Trove or onsite in their national, state and territory libraries.

[www.nla.gov.au](http://www.nla.gov.au)

## **Family History Club**

Curious about your ancestors? Whether you are a beginner or an experienced family history researcher, come and join the Stonnington History Centre's monthly group where you can meet with fellow enthusiasts and explore the many genealogy resources available at the Stonnington History Centre.

First Wednesday of the Month, 2pm-4pm:

5 February, 4 March, 1 April, 6 May, 3 June 2020.

No bookings required.



Elizabeth Moran and family c1890 Stonnington History  
Collection MP14984

**2020 SUBSCRIPTIONS NOW DUE!**

**NEW MEMBERS WELCOME!**

**MEMBERSHIP FORM PG 8 →**

**Malvern Historical Society Inc P O Box 184, Malvern Victoria 3144**

**I would like to**

- Join the Malvern Historical Society
- Renew Malvern Historical Society

**Annual Membership Options**

- Individual \$13
- Full time student \$9
- Family \$20

Date:

Donation \$ \_\_\_\_\_

TOTAL \$ \_\_\_\_\_

**Member information**

Name/s \_\_\_\_\_  
Address \_\_\_\_\_  
Suburb \_\_\_\_\_ Postcode \_\_\_\_\_  
Phone \_\_\_\_\_ Mobile \_\_\_\_\_  
Email (please print) \_\_\_\_\_ Signature \_\_\_\_\_

- Yes I'd prefer to receive the newsletter by email only.**

**Payment options**

- Paying by Direct Transfer

Commonwealth Bank BSB No: 063187 Account No: 10104883 Account Name - Malvern Historical Society

\*\*\* Please make sure the message/reference box states your name and what the payment is for.

\*\*\*We would appreciate the return of your completed form by mail or by email.

- Paying by Cheque

Please make the cheque payable to the Malvern Historical Society Inc. Kindly forward your cheque and completed form to the Malvern Historical Society.

**I would like to assist with:**

- Committee and administration
- Newsletter
- Walks
- Talks
- Afternoon teas & suppers

\*Financial year: 1 Jan - 31 Dec

**MHS website: [www.vicnet.net.au/~malvern](http://www.vicnet.net.au/~malvern) Tel: 0438 515 631 [malvernhistorical@yahoo.com](mailto:malvernhistorical@yahoo.com)**

**Malvern Historical Society Inc. (A7682)**

**P.O. Box 184, Malvern Vic 3144 Telephone: 0438 515 631 [malvernhistorical@yahoo.com](mailto:malvernhistorical@yahoo.com)**

**[www.vicnet.net.au/~malvern](http://www.vicnet.net.au/~malvern)**

The Malvern Historical Society Inc is a member of the Stonnington History Committee, an affiliated member of the Royal Historical Society of Victoria and a member of the South Metro History Group.

**OTHER STONNINGTON HISTORY CONTACTS**

**Stonnington History Centre, Email: [history@stonnington.vic.gov.au](mailto:history@stonnington.vic.gov.au)**

**Tel: 8290 1360 [www.stonnington.vic.gov.au/Discover/History](http://www.stonnington.vic.gov.au/Discover/History)**

**Prahran Mechanics Institute Tel: 9510 3393 [www.pmi.net.au](http://www.pmi.net.au)**

**Have you enjoyed viewing the photos in this issue?**

Material for the articles has been researched from the **Stonnington History Centre Collection**. The database contains over 65,000 records. To view enlargements of photographs and to read more, just go to the website. [www.stonnington.vic.gov.au/Discover/History](http://www.stonnington.vic.gov.au/Discover/History)

**East Malvern  
Community Bank® Branch**  
300 Waverley Road, East Malvern  
Phone 9563 6044

**Bendigo Bank**  
Bigger than a bank

