

LOCAL HISTORY NEWS

Malvern Historical Society Inc.

Keeping Stonnington's History Alive!

July 2019 - Newsletter No. 80

Saturday 27 July & Sunday 28 July

Open House Melbourne Weekend comes to Stonnington on 27 and 28 July. A wide range of buildings in Stonnington will open their doors as part of the Open House Melbourne Weekend.

The following buildings will be part of this special event: Central Park Conservatory, Malvern East; *Como House* and Garden, South Yarra; Former Malvern Fire Station now the Firestation Print Studio, Malvern; Former Prahran Police Station and Courthouse, Prahran; State Gymnastics Centre, Windsor; Malvern Town Hall, Malvern; *Mandeville Hall*, Toorak, Northbrook and former stables, Malvern; St George's Anglican Church, Malvern; St Joseph's Catholic Church, Malvern; Stonnington Depot, Malvern; *The Gables*, Malvern East; *Toorak House* - Swedish Church Melbourne, Toorak; *Umina* - The Country Women's Association of Victoria, Toorak; and *Valentines* - Malvern House, Glen Iris. Now in its 12th year, Open House Melbourne is the largest and longest-running Open House program in Australia. openhousemelbourne.org



Northbrook 2015 (Shane Bell)

10 July - 3 August

Stonnington History Centre Exhibition Space

'The best of times, the worst of times - a woman's lot in Charles Dickens'



This exhibition is presented by the Dressing Australia Museum of Costume and the Stonnington History Centre, to mark the 150th anniversary of the passing of the novelist in 1870. It includes original clothing of the era, spanning several decades of the nineteenth century.

Exhibition hours: Wed - Sat 12pm - 5pm. Entry is free.
Enquires: 82901360

Wednesday 7 August: 10.30am-11.30am

Stonnington History Centre Exhibition Space

Dr David Andreassen will provide an introduction to DNA testing and what can be done with it, including being able to confirm or establish links in your family tree, and to identify your particular genetic origins. The various tests available will be covered. Free event. Bookings required.
Tel: 8290 1360

Congratulations!

The Society would like to congratulate Gilah Leder and Andrew Lemon who were recognised in the Queen's Birthday honours list. Gilah, a member of the Malvern Historical Society and former Committee member, has been honoured for her significant service to higher education, and to the Jewish community of Victoria. Andrew, a tireless worker for the RHSV, has been honoured for his services to community history and the racing industry.

Friday 16 & Saturday 17 August 2019 10.30am - 3.30pm

Victoria History Showcase Prahran Mechanic's Institute Victorian History Library 39 St Edmunds Road, Prahran

The Malvern Historical Society is very pleased to be part of this two day showcase for students, historians and genealogists. There'll be history displays from a wide range of history groups, 100s of resources for research, over \$400 in door prizes, showcase bags and a history book sale. Gold coin entrance fee. Lift access to Main Library.

For more information, email: library@pmi.net.au
Phone: 9510 3393 More information on page 9.



Welcome - Bernadette Wood

We are very happy to welcome Bernadette Wood who has joined the Malvern Historical Society Committee. Bernadette will be a great addition to our team!

Malvern Historical Society Inc - Annual General Meeting

The Malvern Historical Society Inc AGM was held on the 15 May 2019. At the meeting Lorraine Sage was re-elected President. Also re-elected were Jane Nigro - Vice President, Ann Ahin - Treasurer, Pat Brincat - Minute Secretary, and Committee Members - Marisa Costa and Francesca Di Mattina. The thanks of the Society was expressed to the following for their help and assistance during the past year - Jim Cranage, Cranage Partners, Chartered Accounts, 31 Station Street, Malvern, for reviewing our financial books for 2018, Ron Polak and the staff of MBE, 45 Glenferrie Road, Malvern, for undertaking all our printing requirements, Linda Tassone of Jeffrey's Books, 140 Glenferrie Road, Malvern for selling our various publications, the City of Stonnington for their financial assistance during the year and Simone Sharpe, Janet Buick, Jack Matthews and Julia Tregear from the Stonnington History Centre for their endless assistance and the help they so graciously give when answering the Malvern Historical Society's questions. Mr. Michael O'Brien, MP, who publicises our various events during the year on his Community Notice Board, and the East Malvern Community Bank - Bendigo Bank for all their support and assistance, were also thanked. We also appreciate the way coffee shops and the Stonnington Libraries display our Newsletters. Thank you to all the members of the Society who supported our various activities during the year. After the formal part of the evening was closed everyone enjoyed a very informative, illustrated presentation by our guest speaker Des Tobin who spoke on the theme 'You Can Take the Boy out of Malvern but you can't take Malvern out of the Boy'. Des presented his story with humour and graciousness. Lorraine Sage. President - 9885 9082

The tokens are counted!

Grill'd 217 Glenferrie Rd, Malvern have counted up the tokens for the month of June and they are very happy to hand over a \$100 donation to the Malvern Historical Society. Being part of Grill'd's Local Matters program has certainly resulted in the Society getting lots of extra awareness and support from the local community.

Calling all local sporting heroes!

The Stonnington History Centre is working on its next exhibition with a sporting theme. It opens in October. If you or someone in your family has ties to the City of Stonnington and achieved sporting success at the state or national (or even international) level, and you have a story you'd like to share, please contact the History Centre on 8290 1360 or email history@stonnington.vic.gov.au before Friday 20 September, to be considered for inclusion in our exhibition.

The Stonnington History Centre is always seeking to grow its collection of material relating to the local area, its people, places, businesses, organisations and clubs. If you manage the archives of a local sporting club that contains photographs, ephemera, documents and other items in need of a permanent and safe home, which can be accessed by researchers now and in the future, please contact us on 8290 1360 or email history@stonnington.vic.gov.au.
Simone Sharpe Team Leader Historian Stonnington History Centre Northbrook

Taking Local History to the Community

Members enjoyed our Behind The Scenes visit to The Entrepreneurial Spirit exhibition at the Stonnington History Centre with Local History Librarian Janet Buick. Jane was one of the speakers at the RHSV workshop relating to membership and volunteer engagement hosted by the Sebastopol Historical Society, Ballarat. Thanks to Ilya Latch, a Malvern Historical Society member, Yvonne Bendigo Regional Genealogical Society, Ernie and Sandy Bringham, East Malvern Combined Probus Club, Ross and Desley Garnett New Farm & Districts Historical Society Brisbane, Julie Edwards from Queenscliffe Historical Museum and Helen Gobbi from History Monash formerly known as the Oakleigh Historical Society, who all offered suggestions on how to engage volunteers in 2019.



Heyington Station area walk 2019 (Ann Ahin)

Cr Steve Stefanopoulos, Mayor, City of Stonnington, recently met Armadale Primary Year 6 students. Steve gave a copy of the Malvern Historical Society publication, *Greetings from Malvern*. to each student. The book was later used as part of an activity where the students were asked to take photos of different images in the book, and then take current photos of the sites. Steve said the results were very impressive!

City of Stonnington Community Grant

The Malvern Historical Society committee would like to thank Stonnington Council who have announced that the society has been successful and we will receive a City of Stonnington Community Grant for 2019/20. We are planning to use the grant for the printing of our newsletters, updating of the website, laminating of display photos, and the printing of pamphlets and puzzles for school children. Council also agreed to our request for in-kind use of council meeting rooms.



Malvern Heights Bowling Club at the home of Oliver Gilpin, Finch Street, Malvern East Road. c1912 Stonnington History Collection MP36

835 High Street Armadale Herbert Thomson's engineering works.

This building now faces demolition. The first Australian motor car, a vehicle powered by steam with a water tube boiler heated by kerosene, was made here in 1896 by Herbert Thomson, when it was Thomson's Motor Works, 835 High Street, Armadale.

The first four wheel Phaeton, wooden bodied steam car by Herbert Thomson, now in Museum Victoria, was originally constructed in 1896-99 and exhibited in Victoria and New South Wales. Thomson made steam engines including the vertical tandem compound engine and water tube boiler fitted to this vehicle, which was finished in about June 1898. This steam car was later exhibited as a historical curiosity by Vacuum Oil at the Victorian Motor Exhibition in 1912, the first Victorian motor trade show. It was then dismantled and restored in about 1960 before being donated to the Melbourne Museum.



835 High Street Armadale 2019
(Andrew Summons - Hocking Stuart Armadale)



Herbert Thomson and his family in his first steam-driven car c1896 Stonnington History Collection PH8539

work promptly executed. Mr Herbert Thomson, who is an expert motor valuator to His Majesty's Customs, informed us that the firm was also manufacturers and direct importers of all kinds of motor vehicles, parts, accessories, etc, and repairers to the British motor car agencies. Their reputation as motor engineers, and their workshop facilities, enable them to compete on the main lines of quality and price with anyone in the trade. They are always very happy to receive visits of inspection and give trial. Telephone: 220, Malvern Exchange'.

The original Thomson engineering works building at 835 High Street Armadale was investigated as part of the City of Stonnington's Shops Heritage Study undertaken in 2011. It was identified in the preliminary investigation (Stage 1) and was recommended for further investigation. In Stage 2 of the Study it was looked at in more detail and found not to meet the threshold for individual significance. The Study concluded: 'The building has historical significance for its pioneering role in Australian automotive manufacturing, but it is of limited architectural significance. The significance of the place could be recognised through means other than retention of the building, such as the existing historical marker on the façade and archival recording, in the event that it is altered or demolished at some future point.' (2011) (2018). There is a City of Stonnington Heritage Marker on the building.



Thomson's Motor Works, High Street, Armadale
c1906 Stonnington History Collection PH7372

Additional details:

Museums Victoria <https://museums victoria.com.au/collections-research/ADB>

<http://adb.anu.edu.au/biography/thomson-herbert-8795>

Museum of Applied Arts and Science <https://collection.maas.museum/search?q=Herbert%20Thomson>



**Malvern Op Shop
1964**

mecwacare is an organisation founded by a group of volunteers concerned about the elderly and vulnerable in their local area and is a unique story of a community caring for itself.

First steps

In the 1950s, councillors at the City of Malvern came up with the idea of providing the first senior citizens centre in Malvern. The councillors ran dances at the Malvern Town Hall to raise funds to build the centre on a site in the south-east corner of the Malvern Cricket Ground. The new centre was completed in 1958 and the City of Malvern invited members of the community to be directly involved in caring for their relatives and friends. This voluntary committee looked at other needs for older people in the community and formally became the Malvern Elderly Citizens Welfare Association (MECWA) in 1959.

In 1960, MECWA began a meals on wheels service and opened its first opportunity shop in Malvern in 1964 to raise funds to support its services. This important source of income was expanded, with the opening of the Malvern East store in 1969 and the Windsor store in 1996.

Diversifying our services

Independent living units were opened at MECWA House in Warner Street, Malvern in 1973 and demand in the area continued to grow. The 1970s also brought about the acquisitions of what is now the Barry Fenton Centre in Bowen Street and a property in Fisher Street, Malvern East – at the time a base for the meals on wheels service and later becoming a day centre for people with disabilities.

By 1991 MECWA House had been extended significantly and renamed the Olive Miller Nursing Home. In 1998,

MECWA opened an aged care facility in Prahran, the Sir Donald and Lady Trescowthick Centre, and community housing units in Glen Iris. In the same year, its head office relocated to Waverley Road in Malvern East.

In the early 1990s, the organisation moved into the provision of care and services in clients' homes and by the mid to late 1990s, had expanded services across Melbourne and grown client and staff numbers enormously, including the establishment of an office in Pakenham to accommodate the increasing need for care services in the Cardinia Shire region. In 1999, Rivendell House Community Centre was established in Pakenham, providing social and activity programs to older people and people with an acquired brain injury living in the region.

New millennium brings big changes

In 2001, to further accommodate increasing demand, MECWA constructed a brand new aged care facility – the Noel Miller Centre in Glen Iris. This resulted in the sale of Olive Miller Nursing Home, with all residents moving to the new facility. In 2007, construction of the *mecwacare* Malvern Centre aged care facility began, with the centre opening in 2010.

MECWA's oldest landmark, the original Malvern Elderly Citizens Centre, was marked for demolition by Stonnington Council to make way for a larger Malvern Library, which opened in 2005. In 2009, a decision was made to close the first day centre and consolidate the services it provided to older people into the Bowen Street site.

In 2007, MECWA changed its name to *mecwacare*, which was representative of the organisation's focus as it grew into a larger care services provider across Melbourne and into regional Victoria.

mecwacare today

Following a move from Malvern East in 2015, *mecwacare*'s Corporate Services, Home and Community Care South East Metro Service and Home Care Packages Service now operate out of an office in Malvern Road, Malvern.

Fisher Street Centre in Malvern East provides day programs for people with disabilities, including skills building, education, vocation and inclusion support, and leisure activities. Services to people with a disability are growing significantly, both as centre-based programs and as care and respite services provided into clients' homes, where clients range in age from infants to the elderly. *mecwacare* is also a registered NDIS provider.

Community centres, Barry Fenton Centre and May Armstrong Centre in Malvern East and Rivendell House in Pakenham, offer programs for people with dementia, people with an acquired brain injury and older adults looking for social integration and inclusion. Increasing demand for services in the Cardinia Shire has also resulted in the expansion of Planned Activity Groups to Garfield, Koo Wee Rup and Emerald.

Home and Community Care Services have expanded considerably with offices in the Melbourne CBD, Pakenham, Malvern and Keilor East and since 2013, Ballarat, marking the first time the organisation had provided care outside metropolitan Melbourne. The South West Region Office operates out of Ballarat, providing services across a large area of south-western Victoria. *mecwacare* has since opened offices in Greensborough and Inverloch.

mecwacare now has 11 residential aged care facilities in Malvern, Glen

Original MECWA site looking east down High Street from the Malvern Town Hall, early 1960s



Iris, Prahran, Richmond, Caulfield, Mont Albert, Hoppers Crossing and Westmeadows; and in regional Victoria in Mornington, Hamlyn Heights (Geelong) and Traralgon.

More recently, it has expanded Community Housing to provide 90 units to people over 65 or people with a disability, who are financially and socially disadvantaged. There are fully renovated units in Beaumaris, Sandringham and Glen Iris.

The original Malvern Op Shop is still operating, along with four other stores in Malvern East, Windsor, Hawthorn and Reservoir. Many volunteers are the heart and souls of these stores, which are vital to the organisation with all funds raised going towards caring for clients and residents.

From humble beginnings in Malvern, *mecwacare* now provides care services in all 31 local councils of metropolitan Melbourne and across a substantial area of regional Victoria. With a strategic plan for service growth, *mecwacare* is always seeking opportunities to expand its services and provide care and support to the Victorian community. For more information about *mecwacare*, please visit www.mecwacare.org.au or call 1800 163 292



MECWA bus

MECWA House 1973



Map of Western Port District by Asst Protector (William) Thomas 1840. (SLV ma000704)

Map of Western Port District by Asst Protector William Thomas 1840

William Thomas (1791-1867) was appointed Assistant Protector of Aborigines for the Port Phillip, Westernport and Gippsland Districts in 1838. The indigenous place name Bonginnarup was shown on a map drawn by Assistant Protector William Thomas in 1840, and now held in the State Library of Victoria. It is believed that the name Bonginnarup is the very first-recorded indigenous place name for the Malvern area.

Ian Clark and Toby Heydon state that the Aboriginal name Bonginnarup applied to an 'unidentified locality N of Dandenong Road near Malvern', referring to map 7922-3-4, zone 55, grid reference 271080. This statement is repeated in Ian Clark and Laura Kostanski, *An Indigenous History of Stonnington: A Report to the City of Stonnington*, Univ. Ballarat, 2006, p. 26, adding 'Its meaning is not known.' By comparing distances to identifiable features such as the future site of Princes Bridge in Melbourne, and the village of 'Dandenon', the name Bonginnarup could apply to anywhere between Malvern and East Malvern.

Greg Eccleston - Malvern

Toorak Bowling Club postcard

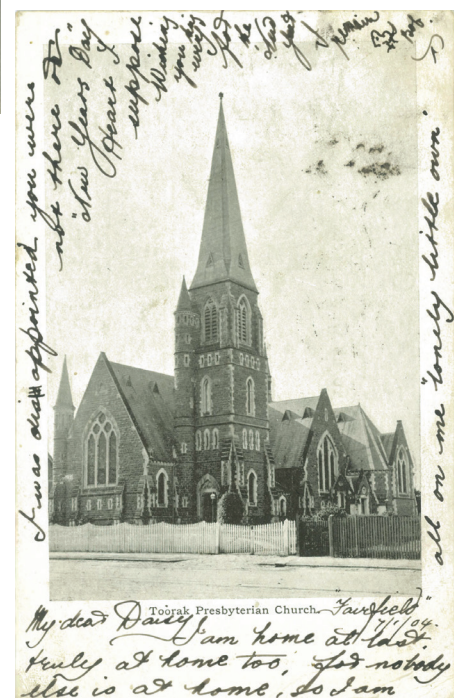
Toorak Bowling Club was established in 1913 and opened on its present site at 9 Mandeville Crescent Toorak in 1914. The club retains its original timber pavilion, built in 1914 to designs by noted architect I G Beaver. There is a pencil comment 'Admiral Jellicoe directing a shot' on the reverse side of the postcard. Admiral Sir John Rushworth Jellicoe, a Royal Navy officer, and Lady Jellicoe were entertained in Melbourne during their visit in 1919.



Toorak Presbyterian Church postcard

Toorak Presbyterian Church (Toorak Uniting Church) was designed by the Melbourne architectural firm of Reed & Barnes. The foundation stone was laid on 24 May 1875 and the building opened on 20 January 1876, providing accommodation for 470 people. The message on the card is dated 1904.

Thanks to Di Foster who discovered the postcards on eBay.



The Whitlams of Serrell Street Malvern East

Serrell Street Malvern East is the oldest street off Waverley Road between Darling Road and Belgrave Road, the northern end having been subdivided and auctioned off by Munro and Baillieu in 1891. As this was at the tail end of the land boom, few houses were built for the next 15 years or so.

One of the first houses built on the eastern side, near the Salvation Army home *Brightside*, was purchased in 1914 by Fred G. Whitlam, probably where the Autun apartment development currently stands. Gough Whitlam's father was also named Fred Whitlam, and whilst we know that Gough Whitlam was born in Kew, there has been some speculation that Fred Whitlam, the father, may have moved to Serrell Street for a short while before moving to Mosman in Sydney. However, we now know that this Whitlam family remained in Serrell Street for many years, moving across the street to No. 47, which continued to be occupied by Mary Whitlam for many years after Fred died. However, we also know that Gough Whitlam's mother was not Mary but Mattie, so it could not have been Gough's family. A clue to the answer can be found a few streets away. On the eastern side of Darling Road, at the Dandenong Road end, a Henry Hugh Gough Whitlam, from Castlemaine, owned a substantial block of land at the end of the 19th century. It transpires that Henry Hugh Gough Whitlam of Castlemaine was Gough Whitlam's grandfather, and that he not only had a son, Fred Whitlam, but also a brother, Fred G Whitlam. So the Fred G. Whitlam of Serrell Street was Gough Whitlam's uncle.
Jerry Bell 2019

New acquisition at the Stonnington History Centre

When **hockingstuart Armadale** started packing up its office to relocate from its historic building at 835 High Street – where the first Australian motor car was built in 1896 – to 1258 High Street, Andrew Summons thought to contact the Stonnington History Centre, to ask if we would like copies of the company's auction flyers for Stonnington properties. We, of course, said 'yes please!', and welcomed Andrew and his son Walter when they delivered many hundreds of flyers to the History Centre in early July. Although hockingstuart has been at 835 High Street since 1991, some of the flyers date back to the 1980s, when real estate advertising featured line drawings of houses, rather than colour photographs. Andrew even gave us some of the original drawings. These flyers, which were delivered in alphabetical order – an archivist's dream – will be interfiled with the History Centre's always expanding collection of real estate advertisements, and provide an invaluable resource for future property researchers.
Simone Sharpe

New members

The Society would like to welcome our latest new members Rosemary Cameron and Des Tobin.



Tobin Brothers 248 Glenferrie Road Malvern

From the Stonnington History Collection

Donald Campbell has donated a copy of his memoir *Growing with Cabrini in Victoria*. Donald boarded with his relatives, the Hutchinsons, at 6 Coonil Crescent, Malvern, and witnessed the development of Cabrini Hospital. He has also included a transcript of an interview with an aunt, Molly Loughnan (nee Hutchinson). Molly moved to 6 Coonil Crescent in 1910.

Des Tobin recently donated some ephemera and photos from the Tobin Brothers collection. Tobin Brothers, which had a head office in Flemington Road, Melbourne, had opened its first Malvern office at 191 Glenferrie Road by November 1940. By October 1942 it had relocated to new premises at 248 Glenferrie Road, on the corner of Stanhope Street Malvern. It remained here until the mid-1960s, before relocating to premises it had purchased in High Street in late 1962, which it converted into a funeral parlour and family residence (now 1382-1388 High Street Malvern).

Find the Map You Want

The National Library of Australia has a collection of maps that stretches the globe! Learn how to find and explore the vast and diverse online map collection in their free webinar. It will soon be available on the National Library website.

Source: *Unbound*, National Library of Australia eNews July 2019 <https://www.nla.gov.au/unbound>

Brighton Cemeterians

The Brighton Cemeterians are a not-for-profit community group working actively with the Southern Metropolitan Cemeteries Trust, the administrators of Brighton General Cemetery.

Their online database helps people seeking genealogical data, as well as being a central location to celebrate the lives and achievements of those interred at Brighton Cemetery. www.brightoncemeterians.org.au

Malvern Historical Society Inc. (A7682)

P.O. Box 184, Malvern Vic 3144 Telephone: 0438 515 631 malvernhistorical@yahoo.com

www.vicnet.net.au/~malvern

The Malvern Historical Society Inc is a member of the Stonnington History Committee, an affiliated member of the Royal Historical Society of Victoria and a member of the South Metro History Group.

OTHER STONNINGTON HISTORY CONTACTS

Stonnington History Centre, Email: history@stonnington.vic.gov.au

Tel: 8290 1360 www.stonnington.vic.gov.au/Discover/History

Prahran Mechanics Institute Tel: 9510 3393 www.pmi.net.au

Have you enjoyed viewing the photos in this issue?

Material for the articles has been researched from the **Stonnington History Centre Collection**. The database contains over 65,000 records. To view enlargements of photographs and to read more, just go to the website. www.stonnington.vic.gov.au/Discover/History

East Malvern Community Bank® Branch
300 Waverley Road, East Malvern
Phone 9563 6044

Bendigo Bank
Bigger than a bank



Malvern Historical Society Inc P O Box 184, Malvern Victoria 3144

I would like to

- Join the Malvern Historical Society
- Renew Malvern Historical Society

Annual Membership Options

- Individual \$13
- Full time student \$9
- Family \$20

Date:

Donation \$ _____

TOTAL \$ _____

Member information

Name/s _____

Address _____

Suburb _____ Postcode _____

Phone _____ Mobile _____

Email (please print) _____ Signature _____

Yes I'd prefer to receive the newsletter by email only.

Payment options

Paying by Direct Transfer

Commonwealth Bank BSB No: 063187 Account No: 10104883 Account Name - Malvern Historical Society

*** Please make sure the message/reference box states your name and what the payment is for.

***We would appreciate the return of your completed form by mail or by email.

Paying by Cheque

Please make the cheque payable to the Malvern Historical Society Inc. Kindly forward your cheque and completed form to the Malvern Historical Society.

I would like to assist with:

- Committee and administration
- Newsletter
- Walks
- Talks
- Afternoon teas & suppers

*Financial year: 1 Jan - 31 Dec

MHS website: www.vicnet.net.au/~malvern Tel: 0438 515 631 malvernhistorical@yahoo.com

NATIONAL FAMILY HISTORY MONTH

VICTORIAN HISTORY SHOWCASE



Victorian PRAHRAN
History MECHANICS'
Library INSTITUTE



Celebrating the Prahran Mechanics' Institute's 165th Birthday
Hosted by the Friends of the PMI Victorian History Library

FRIDAY 16 & SATURDAY 17 AUGUST

10:30am -3:30pm

A SHOWCASE FOR STUDENTS, HISTORIANS & GENEALOGISTS
AND ANYONE ELSE WITH AN INTEREST IN HISTORY

HISTORY DISPLAYS FROM:

- ▶ Prahran Mechanics Victorian History Library
- ▶ Royal Historical Society Victoria
- ▶ Malvern Historical Society
- ▶ Coburg Historical Society
- ▶ Glen Eira Historical Society
- ▶ Moorabbin Historical Society & Box Cottage Museum
- ▶ Seymour Historical Society
- ▶ East Gippsland Family History Group
- ▶ Berwick Military Medals (Michael Madden)
- ▶ Scouts Heritage Victoria
- ▶ Family History Connections
- ▶ Mornington Peninsula Family History Society
- ▶ Australian Railway Historical Society Victorian Division Inc.
- ▶ Cinema and Theatre Historical Society

- Hundreds of resources for research
- Over \$400 in Door Prizes & Showcase bags (including a one year subscription to My Heritage Years & DNA Kit, PROV Books, a one year Membership to the PMI)
- Second-hand Book Sale (Friends of PMI Library)
- Easy access to public transport
- Gold coin entrance fee
- Lift access to Main Library

Proudly supported by:



HELLENIC
MUSEUM



MyHeritage

Public Record
Office Victoria

Prahran Mechanic's Institute Victorian History Library
39 St Edmonds Road, Prahran 3181



/pmilibrary



www.pmi.net.au



9510 3393