

LOCAL HISTORY NEWS

Malvern Historical Society Inc.

Keeping Stonnington's History Alive!

March 2016

Newsletter No. 60

Wednesday 16 March *More Than Meets the Eye* 10am

Historian, Stella M. Barber, will present an illustrated talk on her latest publication,

More Than Meets the Eye - the centenary history of Warner's Nursery.

The nursery was established in Hawthorn in 1914 by William Warner. William played a major role in the greening of Melbourne and with his family were instrumental in the establishment of Garden Week and its transformation into the Melbourne International Flower and Garden Show. Stella will also discuss how a number of Australian businesses have been able to survive for over 100 years.

Copies of the book will be available for sale \$50 (cash or cheque)
Phoenix Park Conference Room, Phoenix Park Community Centre,
22 Rob Roy Road, East Malvern (Mel. Ref. 69 D2)

Members: Gold coin Non- members: \$5 Morning tea included Bookings essential Tel: Lorraine 9885 9082



Nancy Warner c 1928

Sunday 20 March *Pets in the Park* 11am - 4pm

Thank you to the members and supporters who have already offered to help at our stall at the City of Stonnington's Pets in the Park in Central Park, Malvern East. Join us and you'll get the chance to talk to a wide range of people and hear their stories.

If you can help for an hour or two sharing Stonnington's local history just give Lorraine a call: 9885 9082

Children's picnic at Central Park East Malvern,
part of the Proclamation of Malvern as a City
celebrations. 1911 Reg no 9711



Saturday 2 April *Discover a little known corner of Malvern East* 9.30am

Join members of the Society for a morning walk in the Malvern Meadows Estate, an area hidden away between the Glen Waverley Railway Line and the East Malvern Golf Course.

Bookings: Lorraine 9885 9082

Numbers strictly limited

Members: Gold coin Non members: \$5

All welcome!

Warrigal Road Malvern East,
looking north towards Ashburton
1936 Reg no 8026



Wednesday 13 April *History Matters: How to construct a family tree*

Stonnington History Centre 10am – 11am

Jenny Cowen, a researcher with more than 30 years of experience in genealogy, explains the steps and resources you will need to confidently construct your own family tree. Bookings required. Telephone 8290 1360

Australia Day Honours

We are delighted to announce that Janet Thomson, a member of the Malvern Historical Society, and Don Garden, President of the Royal Historical Society of Victoria, have both received Honours.

Malvern Historical Society financial year

Just a reminder, the Malvern Historical Society financial year runs from 1st Jan - 31 Dec. You will have recently received a renewal / new membership / gift membership form. Unsure if you're financial for 2016? Just contact Lorraine: 98859082 malvernhistorical@yahoo.com.

Stop Press! Treasures Exhibition - extended until 19 March

The History Matters: Treasures from Stonnington's Archives has been extended until 19 March. Gallery Hours: Wednesday - Saturday, 12 noon - 5pm, Stonnington History Centre, Northbrook, 1257 High Street, Malvern (behind Malvern Library).

Discover the Stonnington History Centre's collection with this pop-up exhibition in the unique Northbrook Ballroom. The exhibition showcases a range of historical photographs, documents and objects, dating from the 1850s.

Enquiries: 82901360 history@stonnington.vic.gov.au



Stonnington's Local History publications

The local history publications are available for purchase from the Stonnington Library and Information Service at <http://www.stonnington.vic.gov.au/library/Stonnington-Libraries> and from Jeffreys Books, 140 Glenferrie Road Malvern Victoria 3144, 9509 5133. View or order from Jeffreys' full selection. <https://jeffreysbooks.circlesoft.net/catalog/search?keyword=malvern>

Amazing History Amazing Stonnington

Back When

Walk into History 1,2,3 & 4

Suburbs at War: The Cities of Malvern and Prahran During the Great War

Private And Public Memory

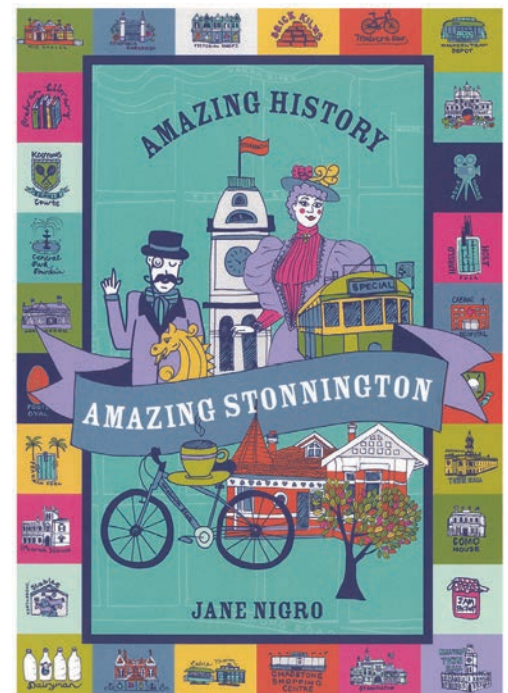
Greetings from Malvern

Stonnington Thematic Environmental History

Talking Stories Narratives by Women in Malvern

History of Malvern: A Supplement

Read more about all the Stonnington Local History publications, including eBooks and eBrochures that you can download for free. <http://www.stonnington.vic.gov.au/Discover/History/History-of-Stonnington/Local-history-publications>



SLV architectural drawings now online

The State Library of Victoria has begun digitising some stunning architectural drawings which were donated in 2002 by the University of Melbourne, Faculty of Architecture, Building and Planning.

The collection includes thousands of examples of public, residential and commercial architecture in Victoria. The SLV are currently digitising the drawings of houses. <http://blogs.slv.vic.gov.au/such-was-life/>

Friends of St Kilda Cemetery Notable and Notorious Women Tour

Sunday 3 April 2016 2pm

Join the Friends of St Kilda Cemetery on an intriguing tour and hear about the lives of some of the women buried at St Kilda Cemetery, including Dame Mabel Brookes and Malvern resident Joan Richmond.

St Kilda Cemetery, Dandenong Road, St Kilda East. \$10 for non-members. Meet at the main gates at 2pm. Bookings required. Ring 95316832 info@foskc.org http://foskc.org/ (Rain, hail or shine so please wear suitable clothing and footwear and bring an umbrella)

St Andrew's Gardiner Cricket Club - celebrating 100 years.

In 1916 a member of the Gardiner Presbyterian Church started a small cricket club. Since that time more than 1,500 players have taken to the field. On Saturday 16 April 2016 the club will celebrate with a 'One Hundred Years Anniversary Dinner' and their new book will be launched. The club is keen to make contact with former players and officials.

Graham Bond 0448 123 060 grahamb102149@gmail.com

Ernest Holloway Leete

Helen Gobbi, President, Oakleigh and District Historical Society, is researching the history of Sigma Pharmaceuticals. Helen has recently donated relevant sections of her research to the Stonnington History Centre.

Ernest Holloway Leete, co-founder of Sigma with Edwin T. Church, pursued pharmaceutical manufacturing. He and Church sought to experiment in order to produce reliable products of proven value before proceeding to their manufacture. Paramount in Leete's thinking was that 'all should leave the world a little better than they found it.' After a protracted path the Sigma Company Ltd was formed in 1912 with Ernest Leete as secretary. Between 1913 and 1915 the business and some manufacturing was conducted from Leete's private pharmacy at 3 Claremont Avenue, Malvern, until sufficient business enabled the lease of premises in Walker Street, South Melbourne.



3 Claremont Avenue Malvern 2012

Hawkins family fruiterery

George Hawkins (1890-1964) was a farmer who came to Melbourne during the Great Depression. According to his son, George worked in a variety of subsistence occupations before entering the fruit business. Their first shop was on the west side of Glenferrie Road, at No. 73.

The Hawkins' family then rented a shop at 140 Glenferrie Road, Malvern (on the east side, near the corner of Edsall Street), from c1937 until 1946 when George gave up the long hours of the fruit business and ran a number of sewing machine shops in the eastern suburbs.

The front entrance (windows, tiles, and stained glass) of 140 Glenferrie Road has since been removed, but the building itself still stands, and is currently occupied by Jeffrey's Books



George Hawkins delivering fruit by bicycle in Glenferrie Road, c late1930s. Reg No 61861



George Hawkins and two staff members in front of the Hawkins family fruiterery, 140 Glenferrie Road, Malvern c1940. Reg no 61850

Duldig Studio's Collection - Community Heritage Grant

The Duldig Studio, 92 Burke Road, East Malvern, has been awarded a prestigious Federal Community Heritage Grant to fund a Significance Assessment of its collection in recognition of its national heritage significance. The Duldig Studio is the former home, sculpture garden and artists' studio of the internationally acclaimed sculptor Karl Duldig (1902-1986) and his wife, artist and inventor Slawa Duldig née Horowitz (c1902-1975). www.duldig.org.au

Bateman family

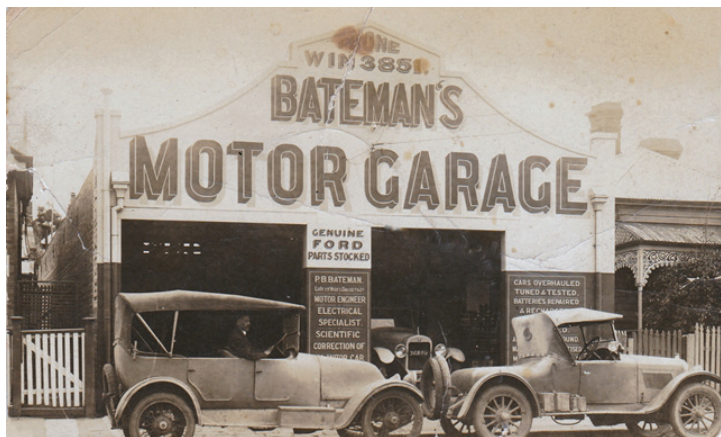
Percy (Bert) Bateman and his wife Mary, moved from Moreland to *Eyrie*, 17 Elizabeth Street, Malvern c1917. They had five children: Herbert Leslie (Les), Colin Bertram, Edna, Thelma Mary, and Arthur Roland, all of whom attended Malvern Central School. *Eyrie*, a six roomed weatherboard house on the north corner of Mountview Road, was owned by the Bateman family from 1917 - 1969.

Bert was an electrical engineer. He started his own motor garage at 718 Malvern Road, near Toorak Station, Armadale. It closed on his retirement in the 1940s. His three sons, Herbert Leslie (Les), Colin and Arthur, all worked at various times at this garage with their father. Signage on the front of the building included: 'P. B. Bateman, late 15 years Dalgety & Co., Motor Engineer, Electrical Specialist, Scientific Correction of Motor Car'. 'Genuine Ford parts stocked'. Malvern Council records include an insurance claim from Percy Bateman for an accident he had when he ran his motorcycle into a trench in Toorak Road, between Glenferrie Road and Elizabeth Street in April 1923.

In 1938, Bateman approached the Inventions Board of the Australian Military Forces (3rd Military District), to discuss some of his inventions and ideas, which he believed would assist the Australian military. These were: a new bullet design; a petrol substitute for plane engines; an idea for sinking battleships; a way for pilots to pull up their planes when in a nose-dive; and a new way of bringing down war planes. Bateman used the address of his motor garage at 718 Malvern Road, Armadale, for this correspondence. Although he had an interview with the Secretary of the Inventions Board, and was asked to submit specifications, it is not known if any of his ideas were adopted. The records are held by the Australian War Memorial [Series: AWM 62, Control Symbol: 94/1/119].



Eyrie, 17 Elizabeth Street, Malvern (undated) Reg no 61675



Garage, 718 Malvern Road Armadale c1930 Reg no 61678



Members of the Bateman family 1946 Reg no 61677

The Historical Society was saddened to hear of the sudden death of Robin Brown. Robin had been a member of the Committee for over fifteen years and was our immediate Past Treasurer. The contribution that Robin made to the Historical Society over all those years was indeed great. Robin was a very kind and gentle person who will be remembered by those who had the privilege of working with him. He was always very positive and supportive in regard to history in Malvern. He will be greatly missed by us all.

We are also saddened to hear of the death of Ruth Durance and Bill Thomson. Both Ruth and Bill have supported the Society for a number of years.

The Society extends our sincere sympathy to the families of Robin, Ruth and Bill at this very sad time.

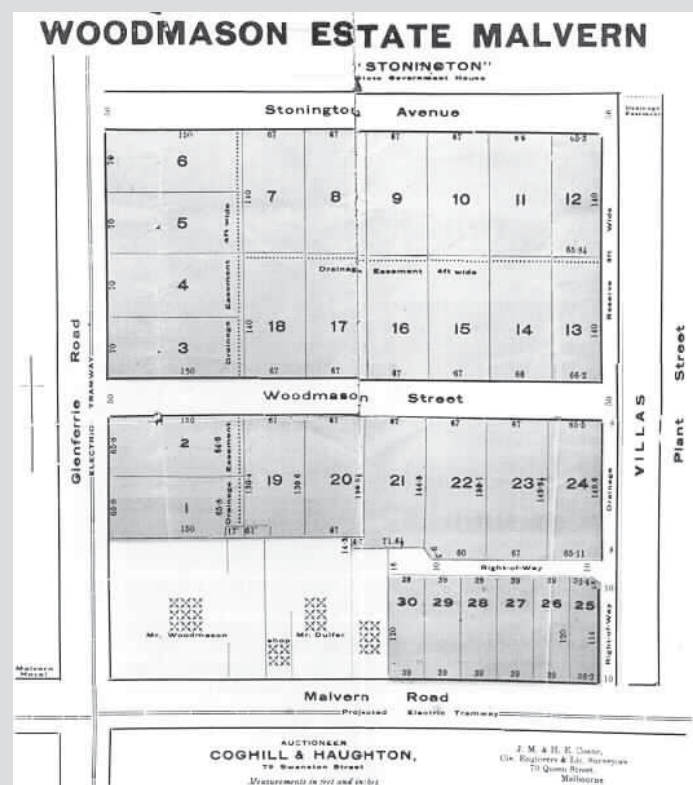
Lorraine Sage - President

Stonington Research Enquiries

Thanks to all the Stonington History Centre staff Ellen, Simone, Janet, Julia and Peter for answering all the enquiries!

Over the past few months we have received enquiries relating to the staff who worked at Gardiner State (Central) school in the 1930s and 1940s. One researcher wanted to locate the home owned by Mrs Emma Parsons in 1898 which was rented by her great grand father Thomas Herbert Lightfoot. We were asked about *Roxburgh* and *Kooringa*, properties owned by Essington Lewis.

Information was recently sought on Woodmason Street Malvern. Woodmason Street was named after Malvern Shire President, Cr William Woodmason.



Woodmason Estate 1913 Reg No 538

Information was sought on the schools attended by the Mullin family who moved to Tennyson Street East Malvern, from Clyde, in 1894-95. The family were there until about the start of WW1. The Mullin family included Hilda Mary, Harold Isaac, Reginald Isaac and Vernon Isaac. The researcher was wondering whether any of the children gained their Standard and Merit Certificate. At the time their mother, Susanne Helen Mullin, was a widow.

We were sent a photo of a researcher's grandparents Albert Warne and Annie McPherson. They bought and lived at 10 Glenvale Road, Glen Iris. There was also a photo of the wallet Albert carried during WW1. The address handwritten on the wallet was *Kooringa*, High Street, East Malvern. The SHC staff found that the current address for *Kooringa* is 1560 High Street, Glen Iris.



Albert Warne and Anne McPherson 1923

Ewing Kindergarten

The inaugural meeting of the Ewing Memorial Pre-School Kindergarten Council was held on the 4th July, 1945, to prepare for the opening of the Kindergarten in February 1946. The initiative for the kindergarten came from the Ewing Memorial Church congregation who were keen to provide pre-schoolers in the East Malvern community with a stimulating social and educational environment and to assist mothers in the community by catering for their pre-schoolers. The kindergarten commenced with one group of 25 children five mornings a week and a playgroup of 15 younger children two afternoons per week. If you have any photos relating to Ewing Kindergarten, just let the Stonington History Centre know 8290 1360.

Diary Date

The Annual General Meeting of the Malvern Historical Society will be held on Wednesday 18 May. Our guest speaker will be Professor Miles Lewis AM FAHA, who will give an illustrated talk on Melbourne Mansions.

Albert Austin was born in 1834 in Somerset. At the age of 17 he came to Australia to learn about Australian farming methods from Thomas Austin, an uncle who lived at Barwon Park, Winchelsea, in the Western District. In the 1850s the lure of gold beckoned Albert and his brother Benjamin.

However they were deterred by their uncles, Thomas and James Austin, who assisted them in their purchase of a substantial crown leasehold in western Victoria. The property, *Eilyer*, was fully stocked with Merino sheep, and in 1871 Albert built a fine bluestone house where nine children were born to his wife Catherine. Albert increased his landholdings in Victoria and NSW, and his outstanding success with the breeding of Merino sheep has been well documented.

In 1886, Austin built a fine 'stone' mansion on six acres of land in Albany Road, Toorak, for use as his town-house. Austin named the house *Eilyer* after his country property. The Toorak mansion was designed by architects Smith and Johnson. By the 1890s Austin owned a total of twenty-nine acres of elevated land in Albany Road, valued at £800 an acre. Albert and Catherine Austin spent their last few years at *Eilyer* in Albany Road where Albert died in 1916. In 1919, following the death of Catherine Austin, legal manager, accountant and auditor, Edward Herbert Shackell, purchased the property. The mansion was demolished, the extensive formal gardens and surrounding estate sub-divided and in 1922 Linlithgow Road was extended to meet Albany Road. *Eilyer's* stables, which were retained as the laundry for Shackell's new house in Linlithgow Road, were eventually converted into the present house at 1A Linlithgow Road. The elevated allotments in Linlithgow Road attracted purchasers who could well afford architects of note and a range of architect designed homes were erected there.

A former resident remembers with affection living at *La Stalla*, 1A Linlithgow Road. His memories include 'our arborist at the time saying that the English Elm in the pocket size back yard was the second largest that he has seen here in Melbourne. It was thought that it was planted in about 1886 when the original Austin mansion, *Eilyer*, was built. A couple of arborists told us that it was thought that apart from having a lot of money, people in the boom period were in a hurry to establish their gardens so quite mature elms were strapped down on the decks of ships, with their roots wrapped in hessian, shipped out from England and planted semi mature here in Melbourne. 1A Linlithgow was the original *Eilyer* stable and was retained when the Shackells demolished the main house. It was converted into a laundry and male sleeping quarters for the male staff when the Butler designed house at 1 Linlithgow was built. It was converted into a residential property post WW2 and was called *The Cottage*. When we moved in, my company was importing furniture hardware from Italy and a friend sent us out a ceramic 'La Stalla' name which is of course Italian for stable. I have also discovered a reference to the 'Eilyer Ghost' which is a very old Rolls Royce now back in the UK. It was originally imported to Toorak by Albert Austin. One can only presume that it was housed in what was the carriage store part of the stable but which is now a downstairs bed room. You can still see traces of the stables in the kitchen eating area.

We also used to live at 3 The Terrace, Armadale and the house was called *Winston*. We bought the house from Sister A. H. Stone, a very old lady, who was a First World War nursing sister in Salonika, Greece. She tried to rejoin in WW2 but was deemed to be 'too old'. As a sign of patriotism, she had the *Winston* name put up. We found out that our house was part of a 13 house estate built by a retired American sea captain (Captain Mabin?). All the houses had been named after American States. We still have Sister Stones 'AIF leather trunk'.

RHSV Did you know?

The Malvern Historical Society is an affiliated member of the Royal Historical Society of Victoria. This entitles our financial members to use the RHSV's extensive library and to attend lectures for no cost. The RHSV is located in the Drill Hall, 239 A'Beckett Street, Melbourne (just opposite the Flagstaff Gardens). <http://www.historyvictoria.org.au>



Eilyer, Albany Road, Toorak 1886 Reg no 5617

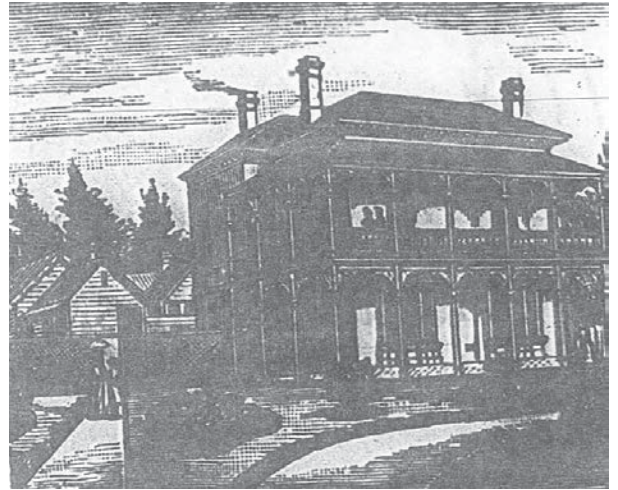


1A Linlithgow Road Toorak 2016

Cornelia College for Ladies

In August 1936, *The Age* ran a series of feature articles on Melbourne's 'New Suburbs'. The following is an extract from the report on Malvern titled - 'Malvern Notabilities: A Blind School Master'.

'A notable citizen of Malvern in the eighties was Daniel Conolly, B.A. He was born in London on 3 July 1837. When sixteen years of age he had the great misfortune to become totally blind. After some difficulty he was allowed to matriculate at the London University. There he obtained his degree of Bachelor of Arts, being the first blind man to do so. Conolly then devoted himself for many years training pupils for the universities. He was also for some time the translator to the British legation in Sweden, and was tutor to the ambassador's children. He was married in Stockholm on 3 June 1884, to Marthe Ulrica Moller, a lady, who, when Conolly first met her in 1874, was a pupil of his own, preparing for her examinations at the University College. They left Sweden for London on their wedding day. After remaining in England about five months, Mr and Mrs Conolly came to Victoria. Despite his great handicap of blindness, Mr Conolly at once obtained the position of classical master at the Presbyterian College. In 1887 Mr and Mrs Conolly opened the Cornelia College for Ladies in Horsburgh Grove Malvern, but their sojourn in this venture was a brief one, as Mr Conolly, after years of suffering from an internal complaint died in February 1888. His friends described him as a courageous and able man.'



Cornelia College for Ladies 1892 Reg no 6506

Following the death of her husband, Marthe Conolly purchased land in the Albany Estate, Toorak and seven months later, Mrs Matthew Davies laid the foundation stone for the new buildings of the Cornelia College for Ladies in Albany Road Toorak. After a drop in enrolments during the 1890's depression, boys were accepted at the school and advertisements in 'The Australian Pastoralists' Review' promoted Cornelia College as being able to offer 'to a limited number of scholars greater advantages than large public schools.' A staff of thirty well qualified teachers 'of the highest professional standing' taught in a range of subjects from Kindergarten to Matriculation. Classics, elocution, physiology, Italian, scripture, plain needlework and dressmaking joined the more traditional subjects. A 'richly equipped gymnasium', tennis court, and a farm at Mulgrave, 'which afford[ed] both riding and driving', combined with the 'sanitary inspection' to declare Cornelia College a 'model institution'.

By 1896 the school had been taken over by Mrs Isabella and Miss Elizabeth Rudd and renamed Strathclyde. Additional subjects included astronomy, mythology and botany. Boarders were allowed to visit friends 'approved of by their parents' on the last Friday of every month, on the condition that they were under the 'personal care of a suitable chaperone.' Strathclyde's referees included locals residents Albert Austin of Eilyer, H.B. Higgins of *Doona* and Mrs Albert Miller of *Whernside*. Speech Days accompanied by the Annual Distribution of Prizes, were held in the school's gymnasium. The two-storey house built for Cornelia College, is one of the few Victorian era buildings that remain in Albany Road. The school closed in 1912, with most of the pupils moving to Lauriston Girls' School in Huntingtower Road. The school building at 4 Albany Road is now used as a private home.

Prahran Mechanics' Institute Short History Prize

The Prahran Mechanics' Institute is looking for historical essays, articles or work of a place or an aspect of a place in Victoria, Australia, or a person associated with a place in Victoria, written by a member or members of a Victorian historical society or similar organisation.

Prize: \$1,000 – \$500 for the author(s) and \$500 for the associated historical group.

Closing Date: Friday 26 August 2016. A panel from the Professional Historians Association judges the prize. Guidelines and entry form <http://www.pmi.net.au/events/#shp>.

Combined crossover installed at Kooyong.

The Argus 23 January 1925

'What was regarded as one of the roughest crossings in Melbourne has been improved by the Railways department, in conjunction with the Tramways Board. At Kooyong, where the Glenferrie Road tramline crosses the railway, a new manganese steel combined crossover was yesterday completed. Motorists who bumped over the old "gridiron" in the valley between the two hills will welcome the improved conditions'.

Looking north from the Glenferrie Road railway gates, Kooyong 1925



New members

We would like to welcome our latest new members Heather and Trevor Cohen, Brad Beitzel and Elizabeth and Andrew Turner.

Taking Local History to the Community

Members of the Society enjoyed their visit to the History Matters: Treasures from Stonnington's Archives exhibition. Thanks to the Stonnington History Centre staff for making us all so welcome -and for the delicious morning tea! Lorraine and Jane attended the Stonnington History Committee meeting in February. Member societies from the South Metro History group have been sharing ideas relating to keeping paper records for memberships and insurance. Around 300 historical societies are covered under the RHSV insurance for affiliated societies.

A large audience of members from both historical societies in Stonnington were fascinated by Associate Professor Don Garden's talk on The Foundation and Early Years of Melbourne. Our recent walks along different sections of Kooyong Road in Toorak have been well attended -thanks Pat, Lorraine, Neil, Jane and Francesca. Thanks to everyone who responded to our request for street directories. Ann Reid has forwarded our most recent newsletter to all members of the Malvern East Group. Thanks Ann! MEG's 2016 motto is 'Plant a tree in 2016'.

Additions to the Stonnington Local History Collection

-Complete set of St Roch's Church notices for 2015 donated by Rev. Father Ian Waters.

-Mrs M Fleming has donated two photos showing the corner of Spring Road and Ascot Street Malvern c1918



Looking east from Spring Road Malvern c1918 The Malvern Gardens can be seen on the right.



Local resident, Michael Corrigan, recently spotted this advertisement on the eastern wall of 883 Dandenong Road East Malvern.

Have you enjoyed viewing the photos in this issue?

Material for the articles has been researched from the **Stonnington History Centre Collection**. The database contains over 60,000 records. To view enlargements of photographs and to read more, just go to the website. www.stonnington.vic.gov.au/Discover/History

**East Malvern
Community Bank® Branch**
300 Waverley Road, East Malvern
Phone 9563 6044

 **Bendigo Bank**
Bigger than a bank



Malvern Historical Society Inc. (A7682)

**P.O. Box 184, Malvern Vic 3144 Telephone: 0438 515 631 malvernhistorical@yahoo.com
www.vicnet.net.au/~malvern**

The Malvern Historical Society Inc is a member of the Stonnington History Committee, an affiliated member of the Royal Historical Society of Victoria and a member of the South Metro History Group.

OTHER STONNINGTON HISTORY CONTACTS

Stonnington History Centre, Email: history@stonnington.vic.gov.au

Tel: 8290 1360 www.stonnington.vic.gov.au/Discover/History

Prahran Historical and Arts Society www.phas.org.au

Prahran Mechanics Institute www.pmi.net.au

Malvern Historical Society Inc P O Box 184, Malvern Victoria 3144

Date:

I would like to

- Join the Malvern Historical Society
- Purchase Malvern Historical Society Membership as a gift
- Renew Malvern Historical Society

Annual Membership Options

- Individual \$13
- Full time student \$9
- Family \$20

Donation \$ _____
TOTAL \$ _____

Member information

Name/s _____
Address _____
Suburb _____ Postcode _____
Phone _____ Mobile _____
Email (please print) _____ Signature _____

- Yes I'd prefer to receive the newsletter by email only.

Is this membership a gift? Yes No (please circle)

Name of recipient _____ Name of giver _____

Payment options

- Paying by Direct Transfer
Commonwealth Bank BSB No: 063187 Account No: 10104883 Account Name - Malvern Historical Society
*** Please make sure the message/reference box states your name and what the payment is for.
***We would appreciate the return of your completed form by mail or by email.

- Paying by Cheque
Please make the cheque payable to the Malvern Historical Society Inc. Kindly forward your cheque and completed form to the Malvern Historical Society.

- Paying by Cash

I would like to assist with:

- Committee and administration
- Newsletter
- Walks
- Talks
- Afternoon teas & suppers

Find out more:

MHS website www.vicnet.net.au/~malvern 0438 515 631
malvernhistorical@yahoo.com

STONNINGTON HISTORY CENTRE

www.stonnington.vic.gov.au/Discover/History 8290 1360 history@stonnington.vic.gov.au