

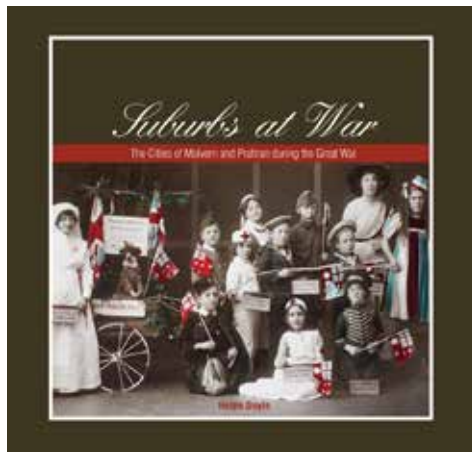
LOCAL HISTORY NEWS

Malvern Historical Society Inc.

Keeping Stonnington's History Alive!

November 2015 Newsletter No. 58

Suburbs at War - a prize winner!



We are very excited to announce that *Suburbs at War* has won the Victorian Community History Awards 2015: Centenary of WW1 Award. The award is a special prize for the best work or project submitted in any category relating to the impact of World War One on Victoria or Victorians.

Suburbs at War: the Cities of Malvern and Prahran during the Great War, written by historian Helen Doyle, was commissioned by the City of Stonnington to commemorate the 100th anniversary of the First World War. Congratulations also to the Stonnington History Centre staff who supported Helen in so many ways.

The book can be purchased for \$29.95 from any Stonnington Library, the RHSV and Jeffreys Books, Glenferrie Road, Malvern.



Prahran Children's Patriotic League (undated)

11 November Walk Kooyong Road, north of Toorak Road Toorak

Wednesday 11 November 6pm

Join members of the Society for a walk along Kooyong Road, north of Toorak Road Toorak.

Find out about the architecture, the early owners of the properties and the stories surrounding the development of the various estates.

Bookings: Lorraine 9885 9082

Numbers strictly limited.

Bookings essential.

Members: Gold coin. Non members:\$5 All welcome!



Paling House, Kooyong Road, Toorak (demolished) Reg No 2352

18 November Talk John Beswicke, Malvern Town Hall Architect



Drawing of New Public Buildings, Malvern. Wilson & Beswicke, architects 1885 Reg No 5018

Bookings essential: Lorraine 9885 9082.

The Malvern Historical Society would like to thank Stonnington Council for providing the venue free for the evening.

Wednesday 18 November 7.30pm

Guest speaker: Ken Bethell

In 1885, plans prepared by architects Wilson & Beswicke for a new Shire Hall, were accepted by Malvern Council. John Beswicke was one of Melbourne's foremost architects.

Our guest speaker will be John Beswicke's grandson, architect Ken Bethell, author of *John Beswicke: 1847-1925, Heritage Architect* (2011)

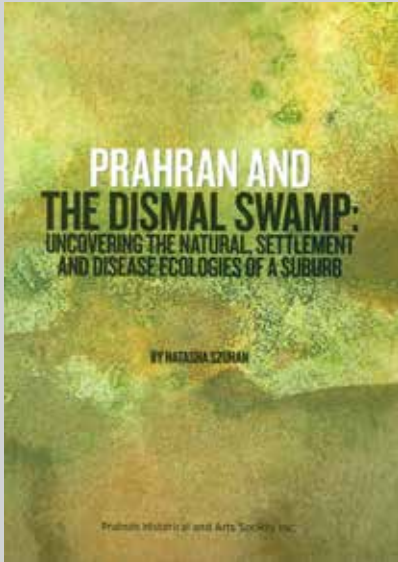
Malvern Town Hall, corner Glenferrie Rd and High St Malvern (Upstairs Foyer - lift available).

Message from the President

I would like to take this opportunity to thank everyone for their very kind good wishes and congratulations on being awarded the City of Stonnington Citizen of the Year Community Services Award. I am very humbled and honoured to receive this Award. All your very kind comments, e-mails, cards, letters and good wishes have been greatly appreciated. Thank you one and all for the part that you have all played in me receiving the Award.

Once again many thanks. Lorraine (Sage)

Prahran and the Dismal Swamp



The Prahran Historical and Arts Society has recently launched a new publication, *Prahran and the Dismal Swamp - Uncovering the natural settlement and disease ecologies of a suburb*. The author is Natasha Suzhan. The project, that resulted in the book, was initiated by the late Dr Roger Brown, 1931-2013, who was the Professor of Chemistry at Monash University and Doctor of Science at the University of Sydney and a Fellow of the Royal Society. He was also a long term member of PHAS.

The book charts the history of typhoid (and other such diseases) within Prahran, in relation to the environmental conditions and the rapid urbanisation of the area. Natasha also discusses how these issues were dealt with by council and health reformers.

The book can be purchased for \$10 from any Stonnington Library and the Prahran Mechanics Institute, 39 St Edmonds Road, Prahran.



Cr Edward Naylor, Mayor of Prahran 1910. Reg No 9106

Malvern Central School celebrates 140 years in 2015

Malvern Central School – also known as Malvern State School No. 1604 – is the oldest school in the Malvern district. It opened in 1875 following the passing of the Education Act of 1872, which stated that primary school education must be free, secular and compulsory. Initially, classes were held in the old courthouse and the schoolhouse at St. George's Church in Glenferrie Road (near Malvern Town Hall), and they were run by Rev. T. C. Cole.

Malvern Central School began on its current site in Spring Road as a two-roomed building erected by W. Swanson. It was officially opened on 1 July 1875. In 1888, there were 295 students at the school, of which 164 had first enrolled at the beginning of that year, necessitating the school's expansion. The distinctive tower, new rooms and an office were added, and the existing long room was subdivided and it was ready for use in March 1891. The school leaving age was raised to 14 years of age (from 13) in 1903, putting increased strain on school accommodation. The Park Street infant school was opened in 1915.

By 1923 Malvern Central School had almost 1100 students. The school had an excellent reputation and had become so popular that it suffered from overcrowding yet again, and more additions were made to the buildings in 1924. Central Classes to Year 8 were established in 1926, and the following year 1196 students were enrolled. The School was the first in Victoria to appoint a Primary School Librarian, employing Miss Jocelyn McCallum, a retired Prahran Children's Librarian, in 1946.

In 1973, coinciding with the Victorian Government's opening up of primary school principal positions to women, the School appointed its first female principal, Miss Joyce I. Ridley.

This same year students began swimming lessons at the nearby Harold Holt Pool. Although student numbers had fallen in the 1960s, by the 1970s the school was becoming overcrowded again, and a portable classroom was installed in the Park Street grounds.

Malvern Central School's artist-in-residence, Jenny Saulwick, worked with about 180 Years 5 to 8 students to create a mural featuring figures made of tiles and mosaic hand prints, which was officially unveiled in October 1998. The School ceased its central classes (Years 7 and 8) at the end of 2014, and now runs classes from Foundation to Year Six.

Sources: Shirley W. Wiencke, *Malvern and the Spring Road School: A Short History*, held by the Stonnington History Centre.



Students at a Physical Culture (Physical Education) class, 1911

Sorrett Avenue Malvern

Local historian, Di Foster, recently shared her wealth of knowledge on the history of Sorrett Avenue, at a History Matters talk at the Stonnington History Centre.



**Christopher C Bailey, Sorrett Avenue,
Malvern 1898 Reg No 1898**

The history of Sorrett Avenue was influenced by significant national and international events after beginning as a carriage drive to a gold era 1850s colonial villa. The street, developed in the boom years, was impacted on by the 1890s depression, two World Wars, the 1930s depression years when houses were quickly converted to flats, and the 1960s when Victorian houses were no longer fashionable. The street, now known as Sorrett Avenue, located on Crown allotment 19, was created in 1886 with the subdivision of the Sorrett estate. When *Sorrett* was built in the 1850s the property was initially known as *Tunbridge Place*. In 1854 the 13 acre (5.2 hectare) lot fronting High Street was sold by the Crown to Hodgson, Greeves and Vaughan, a syndicate of political colleagues and land speculators, for £345 16s.

Augustus Frederick Adolphus Greeves (1805-1874), MLC (1853-56), physician, publican, politician and newspaper editor, had migrated to Port Phillip in 1840. He was one of the surgeons who performed the first local operation with chloroform in 1848. He was elected Mayor of Melbourne in 1849 and was influential in local politics. John Hodgson (1799-1860), merchant, Mayor of Melbourne (1853-54), and a colleague of Greeves, MLC (1853-1860), was known for his charity work. He established Hodgson's Punt at Abbotsford and built a mansion in Flinders Street but lost it when he became insolvent in the 1840s. The building eventually became the former Port Phillip Club. When he re-acquired his wealth he built *Studley House* in Kew in 1857. Charles Vaughan (1811-1864), MLC, Melbourne City Councillor, magistrate and Fitzroy's first

Mayor, was considered 'an unostentatious gentleman, who fulfilled many public duties with credit to himself and to his country.'

In 1855 lot 18 was subdivided into two sections. The north section, with access to Malvern Road via the north end of Spring Road, was sold to London surgeon (Sir) James Frederick Palmer (1803-1871) for £195. The section to the south fronting High Street was sold to Lewis Evans. Two years later Evans's land was sold to publican George Self Smith. Smith also owned lot 19, which included 6 acres (2.4 hectares) fronting Glenferrie Road.

During her research Di discovered the following advertisement which appeared in the *Argus* in July 1889:

'Sorrett Avenue is a most picturesque road, being flanked on either side by pines of long standing. It is situated on the crest of Malvern Hill surrounded by first class properties such as Malvern Town Hall, cricket ground, St Georges Church and parsonage, "Myamyn" (the residence of James Ballantyne Esq.) and the English Scottish and Australian Chartered Bank, all of these being less than two minutes' walk from the properties offered. The Malvern Town Hall is the [horse-drawn] omnibus terminus whilst the railway station is but five minutes' journey. This secures to residents of the locality a rarely acquired convenience of transport to and from the city.'

Special protection for Sorrett Avenue, Malvern, was recommended in the 1989 City of Malvern Urban Character Study which mentioned 'its cul-de-sac form, its mature and massive plane trees, the continuous row of two storey Italianate villas along its south side, and the street entrance defined by the Gothic villa and vast Elm tree'. In 2011 Council agreed to protect a section of the street under a Heritage Overlay of the Stonnington Planning Scheme. Sorrett Avenue is described as '...historically significant as a representative example of the speculative residential development associated with the 1880s land boom in Melbourne and demonstrates the middle-class villas on former mansion estates in the late nineteenth century in Malvern. The relatively grand scale of the houses illustrates the optimistic view of the future of the suburb and the metropolis during the late nineteenth century and is typical of the development that led to the term 'Marvellous Melbourne'.



Nerrena c1950 (earlier known as Tunbridge Place)

It was erected prior to 1856 and demolished in c1967)

Collectables and Ephemera Fair

Sunday 15 November 10am - 3pm.

Camberwell Library Complex, Camberwell Road,
Camberwell.

Stonnington's Level Crossings

Stonnington's residents have been well-serviced by trains since the nineteenth century. Equally they have been able to traverse its many major roads. Inevitably these two transport routes must intersect, resulting in numerous railway level crossings dispersed throughout the area.

We are currently witnessing the removal of some of the more hazardous of these, yet ever since they were first installed the removal of level crossings has been debated. See plans and photographs of some early railway lines and crossings in the new Stonnington History Centre display at Stonnington's four libraries.



Gatehouse close to Gardiner Station,
Burke Road, Gardiner 1917 Reg No 2686

VEAC - Victorian Environmental Assessment Council Investigation into Historic Places

In March 2014, the State Government requested the Victorian Environmental Assessment Council (VEAC) to undertake an investigation into Historic Places on public land across Victoria. The Victorian Government is custodian for around a third of the objects and places currently recorded on the Victorian Heritage Register and most nationally significant historic places across the state. There are also thousands of locally significant places on public land. Together these historic places are managed by a diverse range of government agencies and community volunteers. The Draft Proposals Paper was released on Thursday 22 October 2015 and submissions are now invited until Tuesday 22 December 2015.
<http://www.veac.vic.gov.au>

Plan Melbourne

The Plan Melbourne refresh discussion paper and consultation process has been launched by Minister for Planning, the Hon Richard Wynne MP. The Government has committed to refreshing Plan Melbourne, the plan for Melbourne to 2050, to ensure it accurately reflects community and expert priorities and advice. A discussion paper has been developed to guide consultation with local government, industry, planning experts and the community. The discussion paper can be found online at
<http://www.planmelbourne.vic.gov.au>

Submissions close at 5.00pm AEDST Friday 18 December 2015.

Stop Press! City of Stonnington Community Grant

The City of Stonnington has recently advised the Society that we have been successful with our request for a Community Grant. We are very pleased to say that we have received an inkind grant to cover the cost of the annual joint MHS-PHAS meeting in the Upper Foyer of the Malvern Town Hall. We have also received a Cash Allocation of \$5,070-00. This will be used to cover the costs relating to the design and printing of the newsletters, laminating of photos for display purposes.

Christmas is coming!

Need some gift ideas for Christmas? Why not consider purchasing a copy of an old photograph from the Stonnington History Centre. High res scans of photographs can be purchased for \$31.30 each, while photographic prints start at \$42.85. These can be ordered directly from the History Centre's new website, at <http://www.stonnington.vic.gov.au/Discover/History/Stonnington-History-Centre/Ordering-photographs>.

A My Stonnington Home Research Portfolio also makes a great gift. For \$250 the History Centre can produce a report which includes supporting material and photographs if available, of any property in the City of Stonnington. Allow 3 months for the house dating. Gift certificates are available, and can be purchased from any of Stonnington's libraries.

See <http://www.stonnington.vic.gov.au/Discover/History/Stonnington-History-Centre/Researching-houses-and-properties> for more information.

The wide range of Stonnington local history books make excellent gifts and are available at all the Stonnington Libraries and Jeffreys Books, Glenferrie Road, Malvern. Why not include membership of the Malvern Historical Society with your gift this year! Just call Lorraine, President, Malvern Historical Society 9885 9082 for more details about the Society.



Anzac Commemoration Naming Project

During the Anzac centenary period (2014–18), the Victorian government is conducting a commemorative naming project in partnership with naming authorities, primarily councils. The project is an opportunity for Victorians to acknowledge the wartime service and sacrifice of their local municipality's military service people or locals who supported Australia's military cause.

Ernest George Cheater

A previously unnamed laneway, at the rear of 484-520 High Street in Prahran, has been named Cheater Lane, in memory of Ernest George Cheater. Ernest George Cheater (service no. 6607), was born in Prahran, and was living with his wife at 43 Highbury Grove when he enlisted in April 1916, aged 25. He died of gunshot wounds to the chest received in action in France on 9 August 1918. His wife, Caroline W. Cheater (nee Johns), also lost her brother, Henry James Johns, who enlisted in Prahran and was also killed in action. According to the AIF Project [<https://www.aif.adfa.edu.au/showPerson?pid=51314>], Cheater attended Malvern Road State School (Hawksburn State School), and was a carpenter when he enlisted. He is buried in Villers-Bretonneaux, France.

Edwin Bennett Spargo

Spargo Lane, adjacent to 2A Boardman Street, Malvern East, has been named for Edwin Bennett Spargo. Edwin was born in Brunswick on 16 August 1888, to James and Jessie Spargo. They later moved to 173 Tooronga Road, Malvern East. Prior to the war he had served for three years with the Commonwealth Military Forces. He had been working as a clerk, and gave his postal (father's) address as *Llanfygne*, Tooronga Road East Malvern (between Stanhope and High Streets) when he enlisted in August 1914, aged 26. A lieutenant in the 6th Battalion, he was wounded during the charge on Anzac Cove on 24 April 1915, and repatriated to Egypt. Once he recovered he went back to Gallipoli, where he was declared missing, believed killed in action on 7 August 1915, after leading a charge at Lone Pine. Edwin Spargo appears to have been the youngest of five children, the others being girls. Other Spargo men, related to Edwin, have also served for Australia, including: Bill Spargo (WWI), Ken Spargo (WWII), and Don Spargo (Vietnam War). Don Spargo and his brother Albert later ran Spargo's Side Walk Cafe Bar at the Prahran Market (1998-2002).

Nareeb, Kooyong Road, Toorak

Nareeb was built in 1888 for Octavious Charles Beale. It was originally named *Oma*. Beale had earlier established a large piano factory in Sydney called Beale and Co. Upon purchasing land in Kooyong Road he commissioned architect William Salway to design *Oma* large enough to house his family, which included his first wife Elizabeth and their thirteen children.

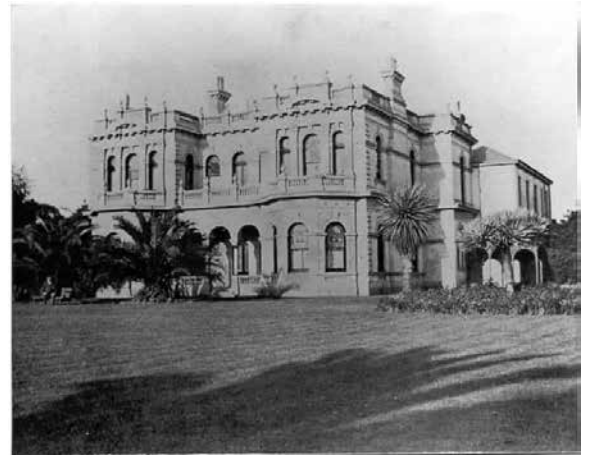
Oma stood in "fine well-planted grounds, with handsome elaborate scroll-work entrance gates (set in ornamental brick walls) opening on to a serpentine drive. The style of the building is French, with red granite pillars. The rooms are finely proportioned and well lit ceilings, cornices, brackets, centre-pieces, mouldings are of thin metal (after the manner of repousse work) ... The effect is very elaborate, and when decorated has a most handsome appearance". *Oma's* thirty-four lavishly decorated rooms included a grand entrance, drawing room and main hall with first floor balconies. Extensive stabling, also designed by Salway, may have attracted merchant, pastoralist and company director James Grice to purchase the property around 1890. Grice was a keen horseman and became Chairman of the Victorian Amateur Turf Club.

When the property was auctioned in April 1890, it was named *Sommariva*. James Grice lived at Moonah outside Mornington, and used *Oma* for his town house. When Grice travelled to England in 1892, pastoralist John Catto leased the house. *Oma* was re-named *Nareeb* when it became the home of Walter and Alice Simmons in 1906.

When *Nareeb* was finally sold in 1964, the house had no electricity. It was lit by gaslight. The kitchen had a huge wood stove, which was lit once a week, so "the ladies could have a bath". The land was sold, the mansion was demolished and Nareeb Court was created. The auction of *Nareeb's* magnificent collection of antiques included the Simmons's 1920 Rolls-Royce. Most of *Nareeb's* furniture had been imported from England, with the exception of an elaborate 16 piece Australian Blackwood dining room suite. The entrance hall, drawing room, smoking room, dining room, music room, breakfast room, sewing room, bedrooms and servants' quarters were crowded with the extensive collection of furniture and fine arts, including the original brass gaslights. *Nareeb* was demolished in 1964. Prior to demolition *Nareeb* was open for public viewing on December 11 and 12, 1964. When the house was demolished various items, including a stained glass window, were removed from the building and sold.

Steve, a MHS member, recently discovered this old film of *Nareeb*. It shows people visiting *Nareeb*, on an open day, prior to its demolition.

<http://www.britishpathe.com/video/stately-home-auctioned-in-melbourne/query/melbourne>



Nareeb, Kooyong Road, Toorak 1964
Reg No 5032

Tooronga and District Star

Do you remember the local newspaper, the *Tooronga & District Star*? The Stonnington History Centre has recently been given a copy of



Vol 1 No 1 August 1958, and an original copy of Vol 1 No 2. The donor is a local resident, whose parents ran a grocery shop in Malvern Road for many years. Her birth notice appears in the 2nd edition! It appears that the paper was published by the local traders and it is largely advertising with just a few articles.

Page 2, Vol 1 No 1 August, 1958 had the headline 'Can you eliminate the danger?' They were asking readers to "forward on any suggestions or ideas to make the pedestrian crossing at the entrance to Tooronga Railway Station more prominent and safer. The residents were also agitating for a facelift for Tooronga Station. Other news included that Sister Stafford, the Tooronga Baby Health Centre nurse, was back at work after recovering from an injury received in a motor car accident. All wished her well and felt fortunate in having "such a fine local Health Centre at Tooronga". An article on the Tooronga and District (North ward) Progress League states that the first meeting had been held in November 1921, with the League meeting monthly ever since. There was great "speculation and interest" in building activity opposite the Malvern Grove Ballroom in Malvern Road. The new premises was to be occupied by Pura Baking Co, wholesale manufacturers of Australian and Continental bread.

The Old Dairy, 100 Tooronga Road, Malvern East

The Stonnington History Centre was contacted by the Director of the Malvern Early Learning and Childcare Centre, formally Malvern Community Childcare Cooperative, in Tooronga Road, Malvern East. Between 1975 and 1980, the centre operated out of the The Old Dairy. The building was the site of the Cranbourne Dairy. There is a coloured, undated copy of the plan of the dairy in the Stonnington History Centre Collection. In an article in the Malvern News Sheet in 1975, Angela Peterson described how the Child Care Centre was established.

'The old dairy at 100 Tooronga Road, Malvern, is the realisation of a dream of a group of local residents who, four months ago, armed with hammers and paint brushes, descended on what was a derelict building. Their enthusiasm and determination made up for their lack of money and building experience as they spent every weekend restoring what is now an attractive and busy child care centre. Those people, the Malvern Community Child Care Co-op, put up their money to complete the project for a variety of reasons. Their greatest need proved to be for permanent part-time care, and there is also provision for casual and emergency care. Once the anticipated government subsidies materialise, several supplementary activities will be implemented. There will be an organised after school programme for brothers and sisters of children in the centre, and

further renovations will provide accommodation for the Malvern Handicapped children's group. But at present the centre is in the position of having to beg, borrow and steal most of its equipment, and of testing to the full the innovative skills of its staff. Donations of any equipment, and particularly of toys, will be most gratefully received.'



The Old Dairy, Tooronga Road, Malvern East 1994 prior to its demolition. Reg No 8057

Langleas, 66 Wattletree Road, Armadale

Langleas, 66 Wattletree Road, was built in 1867-68 for retired Master Mariner, David Gillespie, and his wife Sarah. In 1871 the house is described in the rate books as a brick cottage of 4 rooms.

Gillespie died in 1873 and the rate book of 1874 records Sarah Gillespie as the owner of a 'brick house, verandah, fences, 1 acre'. The house is rated with a kitchen, shrubbery and gardens in 1881. The original allotment with a 316 foot frontage to Wattletree Road was subdivided in 1880, in 1882 and finally in 1907 when the property was reduced to its present irregular size and the large red brick house at 64 Wattletree Road was built.

Sarah Gillespie sold the property in 1886 to manufacturer, Alexander Borthwick (appears to be the renowned painter and decorator). It is believed that one of Borthwick's servants, Annie Jane Bentick died in 1893 while in his service. Annie, although unmarried, had two daughters, Milicent May (Ruby) and Eileen. After her death Eileen, aged 2, was taken into care and died a year later in Armadale. Ruby, aged 5 at the time, is believed to have been adopted by William and Annie Johns and given the name Ruby Johns. The Johns family later moved to England. Alexander Borthwick died on 21 April 1902. Title to the property at 66 Wattletree Road was transferred to Archibald James Borthwick in 1905. Elizabeth Connelly purchased the property in 1909-10, from William Lamb Smith, and the house remained in Connelly hands until 1938. 66 Wattletree Road is no longer visible from Wattletree Road.



Langleas, 66 Wattletree Road, Armadale 1980 Reg No 5213

Stonnington Research Enquiries

We received a request for information on the reception venue at Central Park. The Kiosk in Central Park was on the corner of Wattletree Road and Burke Road Malvern East. It was built in 1911, and extended in the 1920s to accommodate receptions. It included accommodation for a caretaker. A bandstand was erected nearby. The Kiosk fell into disrepair and was demolished in 1973.



**Malvern Rotary, Central Park Kiosk
c1960 Reg No 7014**

Information was sought on Bertha Vietz and her twin sister Myrtle Vietz who were hairdressers in Malvern during the 1940s. Bertha (known as Pat) learnt hairdressing at the Academy of Hairdressing in Melbourne. She also taught at the academy. The twins opened a hairdressing business in Glenferrie Road, Malvern and the salon was called 'Pat and Pam hairdressing'. Bertha married Lindsay Salmon in 1945.

One researcher lived at number 17 Staniland Ave Malvern from 1950 to 1998. He recalls 'When our family shifted in there in 1950 there was a heap of bits and pieces left by the previous owner, one Calvert White, who it seemed had lived his last years there as a recluse. The White family had owned the place they called *Sherwood*, from new. It was built in 1904, and I believe it was part of the Strickland Estate. When our family moved in there were tree branches growing through windows, and the place was very run down.

Amongst the rubbish left behind was a set of postcards, sent to White family members from all over the world. I believe Mr Calvert White was a

shipping company executive. Mr O. White is mentioned in the Malvern Council Minutes in 1932, when he was working in the Engineer's Office.

Information was requested on the history of 98 Waverley Road, Malvern East. The building was originally the Waverley Theatre, it was used by the ABC and it has now been converted into apartments

Athletics Victoria (AV) are looking for material for a history of AV. Some years ago MHS member Anne Jackson did extensive research for the Malvern Harriers Athletics Club on the history of cross country running and the formation of the athletics movement.



Malvern Harriers 1926 Reg No 7936

Neville, from the Camberwell Historical Society, was able to add a little more to the history of the area, mentioned in one of our recent newsletters, bounded by Burke and Malvern Roads and High Street, Glen Iris. In the mid nineteenth century the area, with its north facing sunny slopes, was developed as one of the early vineyards. It was planted and looked after by a farmer living on the eastern side of Gardiners Creek.

One long time resident of Malvern is related to Thomas Conquest, who had brickworks in Union Street, Armadale. All the men in the family were brick makers, and had come from Leicestershire in England. Joseph Conquest (brickmaker) married Janet Thomson (domestic) in 1894. 'A well known maker of bricks at Malvern was Thomson, another of the early immigrant settlers of Malvern. His brick kiln was in Union Street, west of Glenferrie Road. Thomson was not the first man to

make bricks in Union Street. Thomas Conquest was a brickmaker there in the year 1861. He employed five brickmakers, and made by machine 15,000 to 20,000 bricks every week. Conquest died, in the year 1885, and his widow continued the business of making black and red bricks for some time afterwards. After Conquest and Thomson died, and the kilns were gone, two large clayholes, one on each side of Union Street recalled the days of brickmaking in Union Street. In the street was an early dated chapel, built of W.B. painted white, a small place of worship used by the Congregationalists. The little church was called the "Union Chapel", and the street came by its place name through the chapel. *History of the City of Malvern, 1836-1936. p135 J.B.Cooper.*

The *Gundagai Independent and Pastoral, Agricultural and Mining Advocate*, 20 January 1900 mentions Mr and Mrs Webster of *Athol*, Wattle Tree, Malvern, hosting an afternoon tea for a wedding party. Anne Jackson continues her search for a photo of William Philpott. She recently discovered his father and grandfather were county players for Staffordshire. We were sent an image of a Glen Iris brick with the Olympic symbol on it. The Glen Iris Brick Tile and Terra Cotta Co Pty Ltd purchased a site straddling Gardiners Creek in Malvern and Camberwell on 5 March 1912, but a combination of the council and the brick cartel blocking access, resulted in the leasing of land in Thornbury. They also had a brick pit and works in Oakleigh in the 1930s, and later in Templestowe. The Glen Iris Company was bought by Boral in 1970.



**Robert and George Thomson 1890
Reg No 2322**

New members

We would like to welcome our latest new members Andrew Wozencroft and Richard Broome.

Taking Local History to the Community

Roxanne, Lorraine, Pat, Jane E, Gwen and Jane enjoyed sharing local history with the community at the Malvern Central School's 140 Years Anniversary Fair. There was certainly lots of interest in our display of photos, especially from the many young families from the local area. We all enjoyed our bus trip around Armadale and would like to thank Pat, Lorraine and Jane for making it a success. Lorraine and Jane represented the Society at the launch of Prahran Historical and Arts Society's new book, which was held at the Prahran Mechanics Institute. Lorraine and John represented the Society at the Victorian Community History Awards 2015 at the Arts Centre and were very exciting when *Suburbs at War* was announced as a winner. MHS members had lots of fun when we were guests of the Theatre Organ Society of Victoria at their October club night. Bruce Ardley, our organist for the evening, and the well chosen film, certainly kept us entertained! We also all enjoyed being shown the amazing array of organ pipes behind the main stage. Lorraine shared Malvern's history with visitors to Spring into Gardening at Victoria Gardens, High Street, Prahran. She also represented the Society at the 160th Anniversary celebration at the Brighton Cemetery. Simone Sharpe attended the Malvern Girls High School Reunion in October. Jane attended the RHSV History Victoria Support Group meeting.

The Stonnington History Centre staff, Ellen, Simone and Janet, continue to do an amazing job looking after the Collection and answering all the enquiries!

The Society would like to congratulate MHS member Brenda Palmer who has been working at Coles in Glenferrie Road, Malvern, for nearly five decades. Clocking up four shifts a week, she first started working at the busy store as a check-out operations attendee on July 19, 1967!

Stop Press! Malvern and Prahran rate books online.

PROV are uploading the Victorian rate books to Ancestry.com. So far they have the Malvern rates from 1856-1933 and Prahran from 1856-1963 and they are keyword searchable! They are now available online to the public (for a fee) but with library membership you can have access at the libraries. It is planned that they will, in the future, also be available in the Stonnington History Centre Resource Room.

Additions to the Stonnington Local History Collection

The Stonnington History Centre recently received a very large donation of items from Malvern Central School, including building plans, school newsletters, documents and hundreds of school photographs, covering some of the school's 140-year history.

The collection of photographs of Stonnington Church organs, donated by John Maidment, have now been added to the catalogue.



Spring Road Methodist Church 1944 Reg No 61793

Have you enjoyed viewing the photos in this issue?

Material for the articles has been researched from the **Stonnington History Centre Collection**. The database contains over 60,000 records. To view enlargements of photographs and to read more, just go to the website. www.stonnington.vic.gov.au/Discover/History

East Malvern
Community Bank® Branch
300 Waverley Road, East Malvern
Phone 9563 6044

 **Bendigo Bank**
Bigger than a bank



Malvern Historical Society Inc. (A7682)

P.O.Box 184, Malvern Vic 3144 Telephone: 0438 515 631 malvernhistorical@yahoo.com
www.vicnet.net.au/~malvern

The Malvern Historical Society Inc is a member of the Stonnington History Committee, an affiliated member of the Royal Historical Society of Victoria, a member of the South Metro History Group and has been appointed by the Public Record Office of Victoria as a Place of Deposit for non-permanent public records.

OTHER STONNINGTON HISTORY CONTACTS

Stonnington History Centre, Email: history@stonnington.vic.gov.au
Tel: 8290 1360 www.stonnington.vic.gov.au/Discover/History
Prahran Historical and Arts Society, P.O. Box 8649, Armadale VIC 3143
Tel: 9529 7442 www.vicnet.net.au/~phas