

LOCAL HISTORY NEWS

Malvern Historical Society Inc.

Keeping Stonnington's History Alive!

September/October 2015 Newsletter No. 57

6 October

Buster Keaton silent movie "Sherlock Jnr."



Malvern Town Hall c 2014

Tuesday 6 October 8pm

You are invited to be the guests of the Theatre Organ Society of Victoria at their October club night at the Malvern Town Hall. The evening will include the Buster Keaton silent movie "Sherlock Jnr."

(A film projectionist longs to be a detective, and puts his meagre skills to work when he is framed by a rival for stealing his girlfriend's father's pocketwatch!) The guest organist for the evening is Bruce Ardley. There will also be a chance to learn more about the Compton organ and all the hidden pipes behind the main stage!

Bookings by Friday 2 Oct. Lorraine 9885 9082

7 October

Sorrett Avenue: From Open Land to Urban Streetscape

Wednesday 7 October 10am

Stonnington History Centre staff organise an exciting range of free presentations. In October, local historian Di Foster will trace the development of the street that was once a carriageway to a grand 1850 house. **Bookings: 8290 1360**

Bailey Family 1 Sorrett Avenue Malvern c1902 Reg No 7806



17 October

'Hidden Treasures in Armadale' Bus Trip



17 October Saturday 2pm

Ever wondered ... Where is the tiny street with 32 single-fronted timber houses? Which 13 room Italianate villa has been a private home and home to the Melbourne Bible Institute and Yooralla? Where exactly was Australia's motor car made in 1896? Where does the name Armadale come from? Find out the answers to these questions and many more on our Spring bus trip around Armadale.

Bookings essential Members \$8 Non members \$12 Bookings: Lorraine 9885 9082

Plymouth Brethren Church, Wattletree Road, Armadale 1959 Reg No 1191

25 October

Malvern Central School 140 years Anniversary Fair

Sunday 25 October 10am - 4pm

The Malvern Historical Society is looking forward to helping Malvern Central School celebrate their 140th Anniversary. We're planning to have an information and sales table and a large display of photographs. We'd love your help for an hour or two!

Please call Lorraine 9885 9082

Malvern Central School (No. 1604) 1912 Reg No 6779



Stonnington History Centre Resource Room



The Stonnington History Centre has set up a resource room for researchers to access the Sands & McDougall Street Directories on microfiche, along with the Rate books, BDM records and much more.

The Stonnington libraries no longer hold the microfilm resources, therefore all access to these is now at the Stonnington History Centre.

The opening hours have changed and the Centre will now also be open on Wednesday evenings.

The new hours are: Monday Tuesday Thursday Friday 10am to 4.30pm
Wednesday 10am to 7pm **8290 1360 history@stonnington.vic.gov.au**

Northbrook entrance. Arno Roger-Genersh (undated) Reg No 9805

Researching your home

The Stonnington History Centre has a research service that uses material in its collection to compile a dossier on the history of your property, be it residential or commercial. Rate records, photographs, drainage and land subdivision plans, correspondence and building plans are some of the sources used. For a fee of \$250, Stonnington History Centre will compile a My Stonnington Home Research Portfolio containing a summary report and copies of historic documents, that may include photographs or building plans if available. Gift certificates (\$250) are now available for this service. Please note that a minimum of three months notice is required.

To find out more about the My Stonnington Home service, phone 8290 1360 during office hours, or use the online form to contact us: at www.stonnington.vic.gov.au/history



Public Record Office of Victoria

Are you embarking on renovations and want to pay respect to your home's heritage? Maybe you're just keen to find out who built the house or who lived there long before you did. The PROV has produced a valuable guide, *Historic homes*, that will introduce owners of homes in Victoria to government archives that are publicly available to help with property research. Download a free copy at:

www.prov.vic.gov.au

1 - 3 Cawkwell Street, Malvern 1992 Reg No 12956

The History of Warners Nursery Stella Barber

Historian **Stella Barber** will speak about her new book '*The History of Warners Nursery*' at the Kew Garden Club meeting, 1:30pm on Monday 26 October. Warner Nursery first opened its doors in 1914. The club meets at the Kew Library, corner of Cotham Road and Civic Drive, Kew. **1.30 - 3pm Non members \$5**

Stonnington Research Enquiries

We have had an enquiry relating to World War Two. There were military operations on the night of 15/16 July 1944, during which, it is understood, two Lancasters collided.

The 15 crew members of the two planes, from Canada, Australia and Great Britain, were all killed and are buried in the cemetery at Lignieres in France. The village holds a Commemorative Service each year. One of the pilots was Frank Reginald Tickle, the son of Ephraim and Esther Tickle, who was 34 at the time of his death. Frank was married to Phyllis Tickle of South Yarra, Victoria. From research undertaken by the Stonnington History Centre, it appears that Frank and Phyllis had two children, Gerrard and Patricia.

City of Stonnington Community Award



We are very happy to be able to let you know that our wonderful President, Lorraine Sage, has been awarded a City of Stonnington Community Award for her volunteer work in the Stonnington community, especially with the Gardiner Uniting Church, the Stonnington Girl Guides, the Stonnington Emergency Food Group and the Malvern Historical Society.

What a worthy winner! Congratulations Lorraine!

Lorraine Sage, President, Malvern Historical Society with Cr Melina Sehr, Mayor, City of Stonnington 2015.

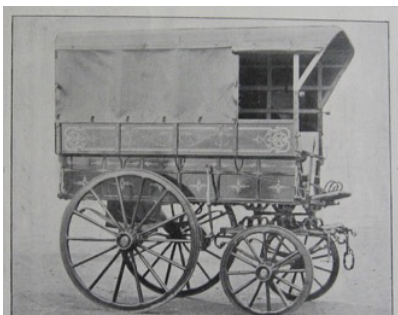
Malvern Historical Society Treasurers

The Malvern Historical Society Committee has recently received notice of Robin Brown's retirement as Treasurer and also as a member of the Committee. The President and Committee have greatly appreciated the contribution that Robin has made to the Society over a number of years. Robin first joined the Committee as a member and then became Treasurer of the Society from 2009 until the present time. Robin has taken many photographs for the Society over the years and it is good to have these records in the History Centre. He also has an interest in the origins of our street names as well as being involved in the life of the Society over these years. On behalf of the Society we extend to Robin our sincere thanks and gratitude for all that he has been able to do for the Society. We wish Robin all the best for the future and look forward to seeing him at our various activities from time to time and also continuing his interest in the origins of our street names project. Thank you Robin.

I would also like to take this opportunity to welcome John Isbel as our new Treasurer. The Society look forward to working with John in the years to come. Thank you John for being prepared to take on the task of Treasurer.

Lorraine Sage President

Grant Bros. coach builders, Malvern



Grant Bros Market Gardener's Waggon (undated)

'Amongst the successful exhibitors at the Royal Agricultural Show held at Flemington last week was Messrs Grant Bros. coach builders, of Dandenong Road, Malvern, who secured two first class prizes and one second for three entries. The first to attract notice was a market gardener's waggon, fitted with Drabble's patent axles, English platform undercarriage, and an improved double lever spring ratchet nave brake, connected to both wheels. It is a very powerful contrivance, only a few rounds pressure on the lever being sufficient to completely block both wheels. A fruit growers' waggon, fitted with English undercarriage .and double lever tyre brake, and English patent male axles, drew the admiration of crowds of visitors to the show. A special feature of this waggon is a cross spring, which works on the axle, and is fitted so that by slackening a screw it can be removed in order to prevent rotating on the axle, which is so

annoying when there is only a light load on. The floor has been constructed lengthwise to enable the cases to slide easily. The waggon is fitted with a shelf to enable the first row of cases to be removed without interfering with the second, and is capable of carrying 70 bushels of fruit. The top is of the best American leather, with front and back curtains, which make it a very comfortable conveyance for all weathers. A second prize was also secured for a market gardener's lorry, with nave brake, seat, and frame round the top; the seat and frame both being moveable. All these vehicles were finished in a most creditable manner, and it reflects great credit on the proprietors to be able to compete so successfully. A visit to the works of Messrs Grant will repay market gardeners, fruit growers, and others'.

Oakleigh Leader Saturday 4 September 1897

Childhood memories

'My father was a good cook and used to make the special, extra things, eg. a baked, glazed ham at Christmas, pickles and chutneys, hot cross buns, pressed tongue and other offal (usually hated by the children of the household!), food from other cuisines, etc. I also remember him taking me into the city every week before I started school and, after the obligatory doughnut and milkshake (me) and coffee (Dad) at the Downyflake shop in Swanston Street, between Flinders Lane and Flinders Street, where I was hypnotised by the iced doughnuts going around on a conveyor belt, we would head off to Myer and the Queen Victoria Market.

We always came home with something new and exotic to try, such as macadamia nuts (then called 'Bopple Nuts') which took hours to crack, some unusual vegetable or fruit that we had never tasted (such as avocado, bok choy or fennel), plus a bag of doughnuts or sugared 'holes' to share at home that evening. I recall that Australians were basically tea-drinkers in those days but my father always drank ground coffee, which we bought weekly in the city and he would grind the beans at home each day in an old hand-grinder, which I still have. Then, coffee became a fashionable drink and it appeared in tubes made by Nestlé as sweetened, condensed milk with a coffee flavour (just squeeze it into a cup and pour on boiling water, or if I wasn't caught, straight on to my tongue!) There was also a brand of chicory essence called "Camp" with a picture of an Indian in a turban on the label, and this essence was stirred into freshly boiled milk. But these were not the coffee my father drank and liked. When Greek and Italian migrants came to Prahran during my childhood, my father would befriend them very quickly and was soon swapping recipes and learning their skills and we were often given gifts of food by these neighbours. They were delighted that someone was interested in their culture and cooking and willing to befriend them when many others treated them as second rate citizens and expected them to assimilate and called them 'wogs'. There were few restaurants then in the suburbs, apart from a Chinese restaurant where you could sit down to eat at a table, or else arrive with a billy or saucepan to take home food ordered from the menu by numbers, such as 'Chop Suey', Fried Rice or Chicken with Almonds - and that's about as good as it got!' **S.W**

Wombalano, Kooyong Road Toorak

Wombalano was the mansion home of merchant John Munro Bruce. John Bruce was a founder of the (Royal) Melbourne Golf Club in 1891 and his son Stanley Melbourne Bruce became Prime Minister of Australia from 1923 to 1929. *Wombalano* (meaning beautiful or handsome) was built in 1884 in the Italianate style, to the design of architects Twentyman & Askew. It included thirty rooms, balconies and tower, surrounded by stables, coach-house and tennis court, and was considered one of the grandest in the district. Being situated on the crown of the hill, the building commanded one of the finest panoramas in Melbourne. In 1911 the property became the home of financier and Member of the Legislative Council, William Laurence Baillieu MLC, his wife Bertha and their family of eight children. Baillieu re-named the mansion *Heathfield*. William Baillieu developed the family's banking, mining and land fortunes.

In 1933, Baillieu's friend, journalist and newspaper proprietor Sir Keith Murdoch, his wife Lady Elisabeth Murdoch (later Dame), and their children, moved into *Heathfield*. Rupert Murdoch went on to build an international media empire. *Heathfield* was the scene of many business dinners, tennis matches, society gatherings and charity functions. During World War II, the Murdoch family evacuated their home, leaving it fully fitted out for the arrival of Lt. Gen. George H. Brett, a US Air Force officer then in command of all American troops in Australia. After the War, *Heathfield* was used by the Salvation Army for their service women, then as accommodation for the night nurses of the (Royal) Children's Hospital. In 1958 *Heathfield* was sold and the land subdivided. The mansion was demolished in 1958.



**Heathfield Kooyong Road Toorak
(undated) Reg No 7273**

RHSV Writing Local History workshops



The RHSV is delighted to launch its Writing Local History workshops.

The first one will be held at the RHSV, 239 A'Beckett Street, Melbourne on Saturday 14 November. The presenter will be Dr Rosalie Triolo who facilitates the development of History teachers in the Faculty of Education at Monash University and is a RHSV councillor as well as a life member and past president of the History Teachers' Association of Victoria. The workshop is FREE to members of the Malvern Historical Society, an Affiliated member of the RHSV. www.historyvictoria.org.au

Diary dates for November 2015

Wednesday 11 November 6pm Twilight Walk
Kooyong Road, north of Toorak Road, Toorak.

Wednesday 18 November 7.30pm Malvern Town Hall
Guest speaker Ken Bethell. Malvern Town Hall architecture.

Ralph Elery Madder's recollections



11 Boyanda Road Glen Iris c1920
Reg No 13548

Ralph Elery Madder was born in Maryborough in country Victoria and came to Malvern with his parents in 1904. He lived first in Finlayson Street and attended Tooronga Road State School. In 1906 the family moved to 9 Staniland Avenue. He remembered it was two miles by dog cart to the old Black Bridge (near the Outer Circle Railway). The pedestrian bridge crossed Gardiner's Creek which at that point was thick with ti-tree. One had to tread carefully as the underlying marshes were full of the nests of wild water-fowl. The many caves along the banks of the creek were a boy's adventure haven. In 1916, Ralph came to The Triangle Glen Iris, bounded by Burke Road, Malvern Road and High Street. There were only a handful of houses including *Viewbank* with its long driveway from Burke Road lined by pine trees. Early houses including Robinson's, the convent (in Glenvale Road) and *Valency*, all long gone. A profusion of lemon trees surrounded *Viewbank* and wild-sown opium poppies grew on the fertile hillside. The rest was open paddocks. Low-lying land at the bottom of Glenvale Road formed ponds on which wild ducks made their home.

Among the first to purchase land in this new subdivision, Ralph bought two house blocks in Glenvale Road. The going price ranged from £2/17/6 to £5 per foot. Soon after, he built a weatherboard and roughcast house on his two blocks. After World War I new homes began to dot the hillside and by 1925 the neighbourhood looked much as it looks today. The last house to be built in this building boom, *Pitlochry*, No.11 Boyanda Road, was designed by the architect S.Terry for Miss Corrie. A curved driveway led past the stately stone steps with their wrought iron banisters. Set high on the block, to take advantage of the fine views, the house featured a gracious Italianate porch, round-arched windows with window-boxes and heavy wooden shutters. Among the many modern luxuries was a basement garage situated under the northern wing of the house. *Pitlochry* became the showpiece of the neighbourhood and appeared in conspicuous contrast to its Californian bungalow neighbours. Ralph purchased this property from Miss Corrie in 1927. He, his wife and four children made it their home.

By the time most of the residents came to the Triangle, Ralph lived alone at No 11 behind a great forest of trees. Heidi was his trusted companion. She was a short-haired collie, boisterous and noisy. One wondered how she managed to avoid knocking her somewhat more restrained master flying. She barked at the doorbell and at the telephone, and unwelcome strangers were kept away. His neighbours respected Ralph's privacy and independence and marvelled at his incredible mental faculties. He talked of his past; matriculating from 'Tait's Baby', (the old Model School); his studies in TT (= Terrible Torture = Theory of Teaching); and his love of machinery which led to a thriving engineering business. He also kept abreast of the present. Possibly the oldest member of the Stock Exchange Club, he knew the market and traded regularly. Ralph had a healthy criticism of the government of the day and little time for incompetency. Travel in space fascinated him. On 12th February 1986, Ralph Elery Madder passed away peacefully at home. He was 94.



Viewbank c1920 Reg No 1271

New member

We would like to welcome our latest new member, Jan Armstrong.

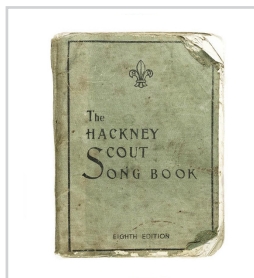
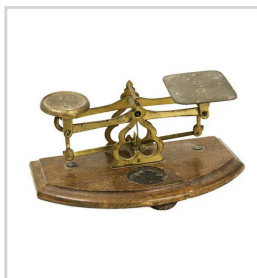
Taking Local History to the Community

Lorraine and Jane represented the Malvern Historical Society at the recent Stonnington History Committee meeting. Pat and Lorraine recently shared East Malvern's history with the Deepdene U3A members. Members shared wonderful memories and personal items at our Show and Tell meeting. There have been lots of requests for it to be held again! We all enjoyed our visit to Kinross Arts Centre. Thank you to Lyndel Wischer who amazed us with her knowledge and enthusiasm. We encourage everyone to visit the Centre when you get the chance.

Thank you to Kelly O'Dwyer MP, Michael O'Brien MP, East Malvern Community Bank and Christine and Alexa, Le Petit Lapin Cafe, 322 Glen Eira Road, Elsternwick, who all display copies of our newsletter. Thank you to the Prahran Mechanics Institute who are displaying all eighteen 'Exploring the City of Stonnington' brochures. The Malvern Historical Society has recently worked with the Stonnington History Centre and photographer Peter King on a project to photograph 20 items from the collection. The photographs, together with their description, will soon be added to the Stonnington History catalogue. Have you spotted the four very large photo enlargements showing early Malvern streetscapes? The front windows of Coles Malvern, the Westpac bank foyer in Glenferrie Road, and Domino's Pizza, 1412 High Street Malvern, are all worth a visit.

Recent additions to the Stonnington History Centre's collection

- Rosemary donated a quarter pint Larcher's cream bottle. Around 1896, Caleb Jenner established a dairy in Edsall Street Malvern. From 1912, Jenner's business was known as Cleghorn Dairy and Ice Works. Larcher's Pty Ltd ran the dairy from 1915 to 1952, when it was known as the Ideal Dairy. In 1952 Crittenden's purchased the factory and stables in Edsall Street Malvern, which were re-developed as one of Malvern's first supermarkets. The Ideal Dairy moved to the corner of Tooronga Road and High Street, Glen Iris.
- Reeves Pharmacy envelope, 24 Glenferrie Road Malvern. Phone: U 4020 donated by Jill Miller
- Photo of Henry Noyes and family at *Holmby*, west corner of Malvern and Hopetoun Roads, Toorak



Items from Stonnington History Centre 2015

Henry Noyes 1906 Reg no 61777

Have you enjoyed viewing the photos in this issue? Material for the articles has been researched from the Stonnington History Centre Collection. The database contains over 60,000 records. To view enlargements of photographs and to read more, just go to the website. www.stonnington.vic.gov.au/history



East Malvern
Community Bank® Branch
300 Waverley Road, East Malvern
Phone 9563 6044

Bendigo Bank
Bigger than a bank

Malvern Historical Society Inc. (A7682)

P.O.Box 184, Malvern Vic 3144 Telephone: 0438 515 631 malvernhistorical@yahoo.com
www.vicnet.net.au/~malvern

The Malvern Historical Society Inc is a member of the Stonnington History Committee, an affiliated member of the Royal Historical Society of Victoria, a member of the South Metro History Group and has been appointed by the Public Record Office of Victoria as a Place of Deposit for non-permanent public records.

OTHER STONNINGTON HISTORY CONTACTS

Stonnington History Centre, Email: history@stonnington.vic.gov.au Tel: 8290 1360 www.stonnington.vic.gov.au/history
Prahran Historical and Arts Society, P.O. Box 8649, Armadale VIC 3143 Tel: 9529 7442 www.vicnet.net.au/~phas