

LOCAL HISTORY NEWS

Malvern Historical Society Inc. *Keeping Stonnington's History Alive!* October - November 2009 Newsletter No. 21

30 September Visit to *Valentines*

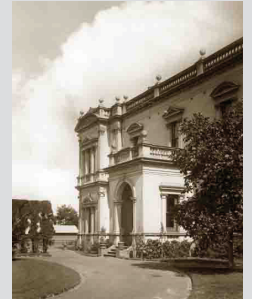
Wednesday 30 September 1pm -3pm

Members and friends are invited to an informal Open Day at *Valentines*, the 40 roomed Glen Iris mansion built in 1891-92, for the **Hon. John Mark Davies MLC**. It was purchased by **Malvern Grammar School** in 1923 and it is now the Malvern campus of **Caulfield Grammar School**.

R.S.V.P. - Lorraine 9885 9082 by Monday 28th September.

Numbers are limited. Bookings essential.

Michael Macgeorge's booklet *The Lives of Valentines* will be available Cost \$5



Valentines c 1930 Reg No 6669

30 September Early Port Phillip (State of Victoria) – Pre 1st July 1851

Wednesday 30 September 8pm Barbara Hawkins, President of Port Phillip Pioneers Group Inc.

Wesley Hall - St. Andrew's Uniting Church, Gardiner (the Hall is on the south side of the Church)

Corner of Burke Road and Malvern Road, Glen Iris

One of the aims of the **Port Phillip Pioneers** is to perpetuate the memory of, and create a greater awareness of, the part played by the Pioneers of early settlement in the area of the present State of Victoria

Cost: Members Gold Coin donation. Non- members \$5 donation Phone President Lorraine 9885 9082

8 November Valentines and Ranfurly Estates, Glen Iris Walk

Sunday 8 November 2pm

Meet at the corner of Wattle tree Road and Harold Ave

Cost: Non-Members \$5 Members: Gold Coin

(+ optional \$5 for Walk Book 1)

For further information, please call Lorraine 9885 9082

Brynmawr, Convent of the Sacred Heart, Burke Road, Glen Iris
c1900 Reg No 47



10 November Visit to *Umina*, Country Women's Association of Vic.

Tuesday 10 November 2pm to 4pm Country Women's Association of Vic. Inc. Bed and Breakfast House, 3 Lansell Road, Toorak (close to Toorak Road)

The visit will commence with a stroll around the spacious gardens, followed by a tour of the house and a talk on both the history of *Umina* and the C. W. A.

Enjoy a delicious **Devonshire Afternoon Tea** in the gracious Dining Room.

Cost - \$10 per person

R.S.V.P. - Lorraine 9885 9082 no later than Thursday 5 November.



Umina, CWA (undated) Reg No 2482

30 November Malvern Hill Estate Toorak Walk

Monday 30 November 7pm

Meet at the corner of Hopetoun and Malvern Roads

Cost: Non-Members \$5 Members: Gold Coin

(+ optional \$5 for Walk Book 1)

For further information, please call Lorraine 9885 9082

Myvora, Glenferrie Road, Toorak
c1920 Reg No 670



MECWA - 50 years of caring for the Community

The Founding Years

In the mid 1950's **Dudley Lucas**, the **Town Clerk of Malvern** and **Jack Jenkins**, a **Malvern City Councillor**, identified that there was a great need to provide facilities for local senior citizens in Malvern. They organised a series of Saturday dances to raise funds for the construction of senior citizen clubrooms in the south east corner of the **Malvern Cricket Ground**. To provide a vision for the organisation, these founders drew up a constitution and held the inaugural meeting of the forerunner to **Malvern Elderly Citizens Welfare Association (MECWA)** on **November 5, 1959**.

In these early years, through the dedication of many energetic volunteers the passion and energy of key identities like **Mary Moline** and **May Armstrong**, and optimizing strong links with Malvern Council, Church groups, local and **State politicians**, the activities of **MECWA** expanded rapidly.. Two Opportunity Shops at **136 Wattletree Road, Malvern** and **299 Waverley Road, East Malvern** were opened in the 1960's. Their revenue supported an essential Meals On Wheels service. By 1971, **MECWA** provided 41,309 meals per year to Malvern families.

Providing Homes for those in need

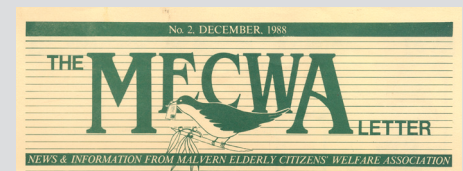
The **MECWA** appeal of 1970 forever changed the scope of the organisation. By April 1971 \$100,000 was raised, in part thanks to **Mr Noel Miller** who gave \$20,000. Construction of **MECWA House** in **Warner Street, Malvern**, an independent living hostel for the elderly became a reality, and MECWA had now entered into providing aged care. Over the next decade, the Board realised that continuing aged care was critical in Malvern, exemplified by the cases of **MECWA House** residents, who were no longer as mobile or independent. Through the continued efforts of the Board, Federal Government funding was secured for the construction of the **Olive Miller Nursing Home** in 1988 and construction started in 1990 in **Warner Street Malvern**. This centre provided 24 hour clinical care for residents.

Community Care

Expansion of services for the community were boosted through the opening of elderly citizens clubs at **57 Fisher Street, East Malvern**, in 1973 and the **Chadstone Elderly Citizens Club** at **72 Bowen Street**, opening in 1977. An expanded and modernised meals-on-wheels service was based at Fisher Street. In 1982 **MECWA** started providing community activities for seniors and people suffering from Alzheimer's disease and related disorders at a centre at **56 Burke Road**. A 'home sitters' service also provided respite care at people's homes for periods during the day. **The Red Cross Redicare Attendant Services** were acquired in 1995, which tripled the existing home care client base and expanded the geographical operating area to include the **City of Whitehorse** and the **Shires of Cardinia and Whittlesea**. In 1996 a third Op Shop was opened at **52 Chapel Street, Windsor**.

Providing care for our Communities

The **Sir Donald and Lady Trescowthick Centre** at **70 Charles Street Prahran** opened in 1998 to provide high quality aged care accommodation for 60 people. The Centre provides a caring and welcoming home for residents, their families, volunteers and staff. In 2003 the **Noel Miller Centre** opened in **Kent Street** in Glen Iris, providing excellence in care for 138 residents. The Centre provides separate care for those with Alzheimer's disease as well as assisted care for the aged. (cont'd)



Noel Miller Centre Construction Begins!

We are delighted to announce that construction has begun on the Noel Miller Centre in Osborne Avenue Glen Iris. While the existing MECWA House and the Olive Miller Nursing Home have recently been granted the maximum three years accreditation by the Commonwealth Government and have been certified as meeting AS/NZS ISO9001/2000 standards, it is clear that the buildings have almost reached their 'use by' date and are not ideally suited to the needs of the changing population.

Noel Miller Centre is being constructed to meet the care needs of people 80 years plus and will contain services that current 'Baby Boomers' (whose parents are entering or in this age bracket now) have grown to expect. This includes:

- Single room accommodation, rather than shared facilities
- Ensuite facilities in every room
- Access for private-sharing with family members
- Own telephone and access to internet, email and fax
- High quality construction and furnishings
- Quality meals and, above all,
- High standards of care and support.

Inside... Education feature: Charities facing cash crisis



Town Clerk Dudley Lucas, Mrs Lucas, Miss Armstrong, Mrs May Armstrong and Mayor, Cr Ted Armstrong at the Mayoral Ball 1963 Reg No 5527

MECWA - 50 years of caring for the Community (cont'd)

Rivendell House in **Pakenham** was purchased to support community services in the **Shire of Cardinia** and many day programs are provided. There are also services in **Garfield, Koo Wee Rup** and **Emerald**. Home Nursing services have expanded to meet greater demand, and offices were opened in **Sunshine** in 2006 and **Preston** in 2007. Looking to the future, **mecwacare** is building a state-of-the-art aged care facility in Malvern which will support 120 residents and set new standards in aged care living. The Centre is due to open in 2010 and will provide a wonderful experience for people to continue living in Malvern. From humble beginnings, and through the passion, drive and love of many dedicated individuals, **mecwacare** now cares for more than 6,000 people every week around Melbourne. **Carolyn Burness, mecwacare, 9563 6226, www.mecwacare.org.au**

George Bernard Shaw's Mulberry Tree

Visitors to **Northbrook**, home of the **Stonnington Heritage Centre**, will be familiar with the enormous mulberry tree beside the front entrance. This tree has a fascinating history which now continues in **Malvern England** thanks to the work of the **Friends of Malvern Springs and Wells, Priory Park, Great Malvern, Worcestershire, England** and **Stonnington Council**

"During the **Malvern Festival** of 1936, **George Bernard Shaw** planted a mulberry tree in **Priory Park** to commemorate his 80th birthday. At the planting ceremony he said that he hoped the tree would outlive him. Shaw died in 1950 aged 94 years. The 66 year old mulberry tree was blown over in a storm during the winter of the year 2000. It was assumed that the memorial to Shaw was lost forever. Research by the **Friends of Malvern Springs and Wells** however revealed that in 1959 a cutting from the tree was sent to **Malvern in Victoria, Australia**. It arrived in a poorly state but further investigation identified where the cutting was planted - and that it is now a massive, healthy tree which continues to thrive. A project was launched by the **Friends of Malvern Springs and Wells** to return a cutting to **Great Malvern, England**, made possible with the sponsorship of **Malvern Original English Water** from the **Malvern Hills**, and the **City of Stonnington, Australia**. Six healthy cuttings arrived (via Heathrow airport), in **Malvern, Worcestershire** from **Malvern, Australia** on Friday 14 August 2009".

www.malvernspringsandwells.com

For more information and photographs of the mulberry tree at the entrance to **Northbrook**, the **Stonnington Heritage Centre**, click on www.stonnington.vic.gov/history and keyword **mulberry tree** and **Northbrook**.



Tree planting ceremony by Mr G. Bernard Shaw, Malvern [England] Festival, 1936
Reg No 12379

Stonnington Research Enquiries

Examples of the wide range of enquiries recently received by the **Malvern Historical Society** and the **Stonnington History Centre** have included requests for information relating to architect **Arthur Plaisted**, the **Lewisham Estate in Toorong Road 1891**, **William Harwood, Victoria Street Windsor, Coronal, Lewes Drive East Malvern, Clifton Street Prahran, Vincent Street Glen Iris, Glenbrook Avenue East Malvern, Malvern schools in the 1930's**, local laneways, tops of shops in **Chapel Street** and general **Toorak** history for students. A descendent of **Colin Eyres**, an early resident of **Heaton Avenue** wonders if anyone remembers the **Gay Serenader's Orchestra**. Information was also requested on **Leura**, in **Toorak Road, Toorak**. **James Murphy**, his wife **Margaret (nee Aitken)** and their son **James Aitken Murphy** lived at **Leura** around 1860. **James Snr** was a merchant in early Melbourne.



Leura, residence of the Hon. T.H. Payne, M.L.C. on the south-western corner of Toorak and Orrong Roads, 1904 Reg No 7818

Help the National Trust keep at least 50 W Class trams running!

The **National Trust of Australia (Victoria)** has been campaigning for years to keep a significant number of Melbourne's unique and iconic **W Class trams** in operation. The Trust classified the remaining fleet of 300 in 1990. For more information contact the **National Trust http://www.natrust.com.au/campaigns/w_class_trams**

Taking Local History to the Community

During August members visited the home of the **Stonnington City Brass** in the **Northbrook Stables**. The members enjoyed a very pleasant afternoon hearing the story of **Stonnington City Brass**. The extensive display from the Band's archives included uniforms, trophies and one hundred years of photos and documents. There was just so much to see and hear about. Wes Brown entertained us with the sounds of the instruments! No wonder the **Stonnington City Brass** is so well known. They have so many things to be very proud of. Their story needs to be heard as it is so important to the history of our area.

President, Lorraine Sage and **Vice President, Jane Nigro** represented the Society at the launch of the **Indigenous History Markers**. The **City of Stonnington** has developed eleven **Indigenous History Markers** to acknowledge the traditional owners and educate our community about our Indigenous history. More information is available on the Stonnington www.stonnington.vic.gov.au or by contacting **Lisa Stafford** at the **Stonnington City Centre**. **Lorraine Sage** represented the Society at the **Prahran Library Opening** in the **Prahran Town Hall**. The **City of Stonnington** is planning to publish a history of the **Prahran Libraries**. The Society would like to thank **Matt Sherman, Council's Recreation Programs Officer**, for publicizing the Society in the recent walks program booklet.

Additions to the Stonnington Local History Collection

Photo of **Les, Reg and Olive Elizabeth Ebbott** donated by **Peter Kerber**

Newsletters of the **Malvern East Group**

Early voters' rolls for **Prahran**, including the first two prepared 1856-1858

Two chronologies added to www.stonnington.vic.gov.au/history

Two DVDs relating to **Stonnington City Brass** donated by **Carol Brooks**

Copies of '**The Courier**', newsletter of **St Andrew's Uniting Church Gardiner Parish** donated by **Lorraine Sage**

Collection of photos of the **Malvern Town Hall clocktower** and clock mechanism taken on the occasion of the retirement of clock winder **Gordon Feore**.



Les, Reg and Olive Elizabeth Ebbott (undated)
Reg No 15160

Members of the Malvern Historical Society were saddened to learn of the death of Clare Staples, a foundation member of the Society. Clare was an active member of the Committee for many years.

Have you enjoyed viewing the photos in this issue?

Material for the articles has been researched from the **Stonnington Local History Collection**. The database contains over 38,000 records. To view enlargements of photographs and to read more, just go to the website. www.stonnington.vic.gov.au/history

East Malvern
Community Bank Branch **Bendigo Bank**



300 Waverley Road, East Malvern. Phone 9563 6044



Malvern Historical Society Inc. (A7682)

P.O.Box 184, Malvern Vic 3144 Telephone: 0438 515 631 malvernhistorical@yahoo.com
www.vicnet.net.au/~malvern

The Malvern Historical Society Inc is a member of the Stonnington History Committee, an affiliated member of the Royal Historical Society of Victoria, a member of the South Metro History Group and has been appointed by the Public Record Office of Victoria as a Place of Deposit for non-permanent public records.

OTHER STONNINGTON HISTORY CONTACTS:

Stonnington History Centre www.stonnington.vic.gov.au/history • Tel 8290 1360

Prahran Historical and Arts Society P.O.Box 8649, Armadale Vic 3143 Tel: 9509 9978 www.vicnet.net.au/~phas