

# LOCAL HISTORY NEWS

Malvern Historical Society Inc. *Keeping Stonnington's History Alive!* August - September 2009 Newsletter No. 20

## 22 August Visit to Stonnington City Brass – Members only

Saturday 22 August 2pm-4pm

The Secretary **Mr Wesley Brown** will conduct a tour of the *Northbrook Stables*, home of **Stonnington City Brass**. The **Stables** are situated between *Northbrook* and the **Malvern Cricket Ground**, behind the **Malvern Library**.

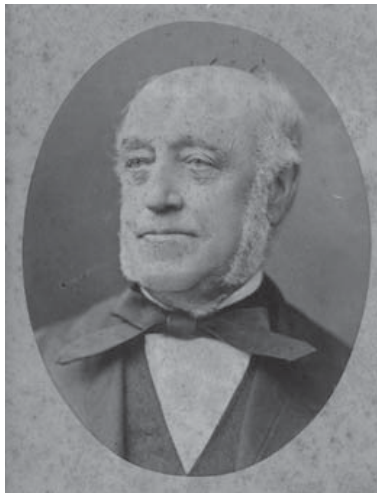
The band first came into existence in November 1911. At that time it was known as the **Prahran and Malvern Tramways Employees Band**.

Numbers are limited. Bookings essential! President Lorraine Sage 9885 9082



Prahran and Malvern Tramways Band 1915  
Reg No 1083

## 30 September Early Port Phillip (State of Victoria) – Pre 1st July 1851



James Damyon, the Russian Consul for Melbourne who resided at *Glen Ferrie* in 1843 and 1852  
c 1840-50 Reg No 7790

Wednesday 30 September 8pm

**Barbara Hawkins, President of Port Phillip Pioneers Group Inc.**

**Wesley Hall - St. Andrew's Uniting Church, Gardiner**  
(the Hall is on the south side of the Church)

**Corner of Burke Road and Malvern Road, Glen Iris**

One of the aims of the **Port Phillip Pioneers** is to perpetuate the memory of, and create a greater awareness of, the part played by the Pioneers of early settlement in the area of the present State of Victoria

**Cost: Members Gold Coin donation. Non- members \$5 donation**

For more information please phone President **Lorraine Sage 9885 9082**



Mrs M A Damyon Reg No 7792

## City of Stonnington

## Community Grants 2009-2010



Edward Charsley and family at *Hedgeley Dene Farm* c1880s Reg No 7345

The **Malvern Historical Society** is delighted to announce that we have received a **City of Stonnington Community Grant** to cover the cost of promotional material (including laminating photo enlargements and the design of new children's puzzles), *Discovering Stonnington by Bus 2010*, the use of Council venues for four meetings and the production of new brochures to add to our Stonnington landmarks series. New titles will include **Prahran Market, Ardrie Park, Harold Holt Pool, Hedgeley Dene Gardens, Princes Gardens (inc Chapel off Chapel), Grattan Gardens and Como Park.**



Commercial Road, looking east past the **Prahran Market** 1905 Reg No 2276.7

## Haverbrack

**Glenferrie Road** was first surveyed in 1854 and described as the **Hawthorn-Brighton Road**. In 1857 the name **Barkly Road** was adopted and in 1872 the name was changed to **Glenferrie Road**. In April 1854, Crown Portion 8, consisting of 6 acres, 2 roods, 24 perches, with a frontage to **Glenferrie Road**, was purchased by **John Cochran**. Three months later, **Cochran** sold the land to Scotsman **Colin Campbell**, who was a pastoralist, politician, author, educationist and cleric. He erected a small pre-fabricated iron house, which he had imported from England, on the site. This was the first dwelling to be erected on the



Haverbrack (undated) Reg No 110

east side of **Glenferrie Road**,

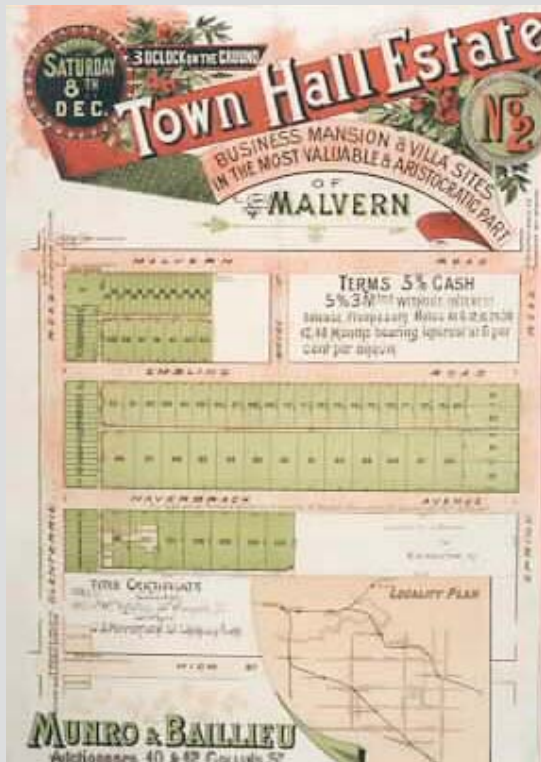
south of **Malvern Road**. The house was used as the district's first Sunday School, before it held the first church services for **St George's Church**. **Campbell** was later ordained a deacon of the **Ballarat Diocese**.

In December 1860 **Campbell** sold his home, which had been named **Haverbrack**, to **Henry Steele Shaw**. In 1868 **Haverbrack** was sold to the **Secretary for Railways, Robert Singleton**. **Singleton** had also purchased land to the south, part of the adjacent Crown Portion 19, and in 1882 **Singleton** brought both lots under the **Transfer of Land Act**. **Robert Singleton** had amassed a considerable fortune, having discovered the reef that started the **Royal Standard** gold mine at **Wood's Point**. **Singleton** married **Sabina Embling**.

In 1888, two years after the completion of the nearby **Malvern Shire Hall**, **Singleton's** land was subdivided, creating **Haverbrack Avenue** and widening the previously created **Embling Road**. The subdivision of the **Town Hall Estate**, with 'business mansion and villa sites in the most valuable aristocratic part', created residential building allotments in **Haverbrack Avenue** and **Embling Road**, and commercial allotments in **Glenferrie Road** and **Malvern Road**. At the east end of **Haverbrack Avenue**, a large area was reserved for a mansion for **Singleton**, and **Haverbrack** was retained on lot 100, with the school room, stables and shed on the adjacent lot.

As a result of the economic depression of the 1890s no development

took place and the allotments remained vacant, including **Singleton's** mansion reservation. By 1911 however, many of the lots had been sold and **Haverbrack** remained on a large allotment at the corner of **Glenferrie Road**. In November 1915, another sale was held of the **Haverbrack Estate**. By this time a number of villas had been erected in **Haverbrack Avenue** and the sale included a further 29 allotments in **Glenferrie Road**, **Embling Road**, **Spring Road** and **Haverbrack Avenue**. **Haverbrack's** allotment was divided into three lots, lots 1 and 2 in **Glenferrie Road**, with the stables and shed, and lots 3 and 4 which included **Haverbrack**. The sale notice stipulated that 'on the frontages in **Glenferrie Road**, also **Haverbrack Avenue**, not more than one brick house shall be erected on any allotment, and shall not cost less than £800'. **Haverbrack** was demolished in 1935.



Town Hall Estate c1890 Reg No. 5456

## Professor Miles Lewis [www.mileslewis.net](http://www.mileslewis.net)

Researchers will appreciate the digitization of the following resources:

**Australian Building** is a survey of building methods in Australia from the beginning until about the 1950s, but overseas users should note that it contains a great deal of non-Australian material within it, on topics ranging from lehmwickel to terra cotta lumber.

The **Australian Architectural Index** covers tender notices, published descriptions of buildings, illustrations, biographical details of architects and other material. Although it is Australia-wide in coverage, the bulk of the content so far is Victorian. It is strongest for the period about 1840 to 1910, but includes some later material.

**Melbourne Mansions** is a searchable data base on major Melbourne houses of the nineteenth century, the result of a project funded by the Australian Research Council. The data base can be searched by location, name of architect, &c. It contains internal provision for emailing comments back to Miles Lewis.

## Glenferrie ( later known as *Culbin* and *Zeerust*)



Shire President James Ferguson c 1872  
Reg No 640

*Glenferrie*, later known as *Zeerust*, appears to have been built by **James Ferguson** MLA, of **Ferguson and Moore**, engravers, lithographer & stationer, around 1870. The mansion, then known as *Glenferrie*, was built on 60 acres near the corner of **Toorak Road** and **Glenferrie Road**. **James Ferguson** was **Shire President** for the **Shire of Gardiner 1871-1872** and a **Councillor** from 1868-1876.

(The 1870 mansion replaced an earlier house on the site, also named *Glenferrie*. The earlier *Glenferrie* was built around 1840, when Crown Portion 21, which included 60 acres bounded by **Glenferrie Road**, **Gardiners Creek**, the line of **Avenel Road** and **Gardiners Creek (Toorak) Road**, was purchased by solicitor **Peter Ferrie**. In 1841 **Ferrie** had obtained a loan secured by a mortgage of lot 21, 'known by the name *Glenferrie [Glen Ferrie]* together with the farm-house and other buildings thereon'. In 1843, **Ferrie** was in financial trouble and was unable to meet his commitments under the mortgage of *Glenferrie* and he lost the property. Over the next twenty years *Glen Ferrie* changed hands several times, until

it was purchased by lithographer **James Ferguson** for 3375 pounds in 1865.)

**James Ferguson's** two storey brick mansion included 'fourteen rooms, two kitchens, storerooms, offices, stables and coach house'. The property also included 'shrubby garden, pasture and cultivation'. In 1902, with the subdivision of the **Toorak Estate**, **Mernda Road**, **Moralla Road** and **Monaro Road** were created . The house, then known as *Culbin*, was retained on a reduced allotment. Around 1904 **George Stevenson** purchased the property and the mansion was re-named *Zeerust*. *Zeerust* was demolished prior to the creation of **Monaro Close** in 1954.



Front façade of Zeerust c1920 Reg No 7823

## Stonnington Research Enquiries



Charles Snelling and Harry Shugg  
(undated) Reg No 14196

During the past two months enquiries have been received relating to the **Erskine** family who were involved with brickmaking from the 1900's, the Museum at **Malvern** in **Worcestershire UK**, **Kong Meng Lowe**, who lived at *Longwood* in **Elizabeth Street Malvern** and **Charles**

**R. Snelling**, who worked for the **Prahran-Malvern Tramways**

**Trust** from 1910. **Charles Snelling** was one of the founders of the employees' brass band and he was Secretary of the band between 1917 until at least 1929. We have also received an email from an Australian artist, **Christine O'Brien**, who lives in California. **Christine O'Brien's** family moved to **Stonnington** soon after it became **Toorak Teachers College** and her father accepted a job at the property. The family lived there for 14 years.



Longwood, Elizabeth Street, Malvern  
c1890 Reg No 90

## Taking Local History to the Community

A group of **Malvern Historical Society** members were treated to a 'behind the scene' visit at the **Stonnington History Centre** at **Northbrook** recently. **Stonnington Local Historian Di Foster** spoke enthusiastically about all the changes within the building and allowed the visitors to view a range of recent additions to the **Stonnington History Collection**. The Society values the work undertaken by the three **Stonnington Local History Officers Di Foster, Ellen Porter and David Tuck**. The Collection is in very safe hands! During July members enjoyed a visit to the **Embroiderers Guild**. The visitors really appreciated the passion displayed by the hosts! The Archives include articles dating back to the 1700's. Of particular interest from the 1700's were the Christening Robe and the cot quilt and from the Victorian era, the canvass work made from Berlin wool and the fire screen patterns. The **Embroiderers Guild** is an active teaching organization. It regularly features excellent displays of the members' work.

**Vice President, Jane Nigro**, attended the July meeting of the **South Metro History Group**.

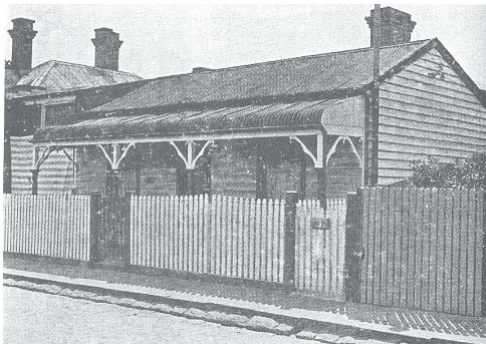
**President Lorraine Sage** and **Hon Secretary, Roxanne Dennis** represented the Society at the August meeting of the **Stonnington History Committee**. The Society is delighted that **Heritage Victoria** is sharing our toddler Book "Back When . . ." with history groups throughout the Western District of Victoria. We were happy to be able to provide **Patricia Arkoudis - Library Development Officer** with copies of our Stonnington landmarks brochure on the history of the **Prahran Library**. The brochure will be available for visitors to the newly renovated **Prahran Library**. The Society is working on planning a history walk with **Matt Sherman, Stonnington Council**. The walk will be part of the **Stonnington Council Program for Seniors Week - October 2009**.

## Additions to the Stonnington Local History Collection

Extensive collection of real estate brochures courtesy of **Philippe Batters**

Collection of slides showing **Gardiners Creek Valley** pre-Freeway

Archives of the **Prahran Inner Wheel Group**, now disbanded (wives of Rotarians)



31 King Street Prahran. Between 1930 and 1943, some members of the Grey Sisters Congregation lived at 31 King Street, Prahran. Reg No 23187

Approx 3 dozen **MMBW plans of Prahran** (c. 1895), scale 1 inch to 40 feet (about 100 such plans are needed to map Prahran)

**Malvern Council minutes 1915-1980** (microfilm)

Plans from **Stonnington Council's Property Department** for **Harold Holt Pool** and for **Malvern Girls High School**

Photo of **Malvern Motorcycles**, Waverley Road East Malvern 1975

The History of the **Grey Sisters 1930 – 1980** by **Kathleen Dunlop Kane** loaned for copying by **Pat Campitelli**



Photo of Malvern Motorcycles 303-305 Waverley Road East Malvern 1975

**Members of the Malvern Historical Society were saddened to learn of the death of Dorothy Ratcliffe, a valued supporter of local history in Stonnington. Dorothy was on the Committee of the Malvern Historical Society for many years and was an enthusiastic President on a number of occasions.**

Have you enjoyed viewing the photos in this issue?

Material for the articles has been researched from the **Stonnington Local History Collection**. The database contains over 38,000 records. To view enlargements of photographs and to read more, just go to the website. [www.stonnington.vic.gov.au/history](http://www.stonnington.vic.gov.au/history)

East Malvern  
**Community Bank** Branch **Bendigo Bank**

300 Waverley Road, East Malvern. Phone 9563 6044



**Malvern Historical Society Inc. (A7682)**

**P.O.Box 184, Malvern Vic 3144 Telephone: 0438 515 631 [malvernhistorical@yahoo.com](mailto:malvernhistorical@yahoo.com)  
[www.vicnet.net.au/~malvern](http://www.vicnet.net.au/~malvern)**

The Malvern Historical Society Inc is a member of the Stonnington History Committee, an affiliated member of the Royal Historical Society of Victoria, a member of the South Metro History Group and has been appointed by the Public Record Office of Victoria as a Place of Deposit for non-permanent public records.

**OTHER STONNINGTON HISTORY CONTACTS:**

Stonnington History Centre [www.stonnington.vic.gov.au/history](http://www.stonnington.vic.gov.au/history) • Tel 8290 1360

Prahran Historical and Arts Society P.O.Box 8649, Armadale Vic 3143 Tel: 9509 9978 [www.vicnet.net.au/~phas](http://www.vicnet.net.au/~phas)