

# LOCAL HISTORY NEWS

Malvern Historical Society Inc. Keeping Stonnington's History Alive! December-January 2009 Newsletter No. 16

## 14 December The Centenary of Woman Suffrage in Victoria

Members of the **Malvern Historical Society** are invited to join members of the **St Kilda Historical Society** at their December meeting. Sunday December 14, 3pm. **'Vida Goldstein, The Women's Campaigner'** presented by Wilma Farrow in period costume. St Kilda Community Room, St Kilda Library 150 Carlisle St, St Kilda. No charge. RSVP: Essential Fran B/H 9528 5103. It is interesting to note that on the '1891 Monster Suffrage Petition' (p756, lines 6 & 7) **Vida Goldstein** and her mother Isabella registered their residential address as **Komein, Pine Grove, Malvern**. They are reported as living in St Kilda by 1892.

## 15 December Adelaide and Myamyn Streets Twilight Walk

Monday 15 December 2008 at 7pm

Meet at the corner of Adelaide Street and Bell Street, Armadale

Cost: Non-members \$5 Members: Gold Coin

For further information, please call Jane on 0438 515 631

*Stephen Armstrong Jnr, Stokell,  
Adelaide Street 1880's Reg No 8367*



## 19 January Cawkwell Street Twilight Walk

Monday 19 January 2009 at 7pm

Meet at the corner of Cawkwell Street and High Street, Malvern

Cost: Non-members \$5 Members: Gold Coin

For further information, please call Jane on 0438 515 631



*Cawkwell's Tile Works c1900 Reg No 1450*

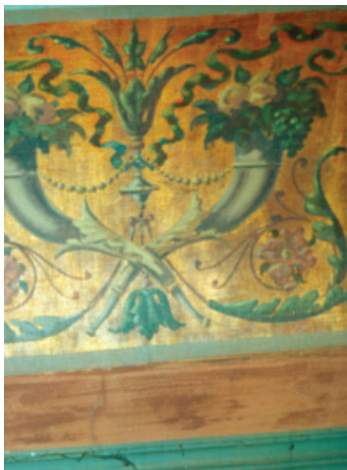
## 2009 Diary Dates

**Saturday 14 March "Step Back in Time" Day at the Prahran Market.**

For more information and to share your memories, contact **Henrietta Morgan, Marketing Manager 8290 8220**

**Saturday 4 April Pets In The Park, Central Park, Burke Rd Malvern East.** For more information contact **Mark Roper, Event Coordinator, City of Stonnington, 8290 1231**

## Stonnington History Centre



*Detail of Northbrook's  
ceiling 1980's*

With the current interest in **Northbrook**, it was timely to be shown photos of the restoration works undertaken in the 1980's. One photo showed the removal of the false ceiling in the hall, revealing the original ornate gilded coved ceiling decorated with urns, fruit and foliage.

Two of these richly coloured ceilings were restored at the time and remain a feature of the house. The photos belong to Philip Leahy, who was responsible for **Northbrook's** 1980's renovation. We appreciate the opportunity to copy these photos as well as the donation of a collection of slides of the development of a number of Malvern parks in the 1970s.



*Northbrook's ornate ceiling revealed 1980's*

**Di Foster. Stonnington Local Historian**

## Early transport in Malvern

According to the **Yarra Trams'** website [www.yarratrams.com.au](http://www.yarratrams.com.au) Melbourne's first tramway was a horse tramway, which opened in 1884 to carry passengers from Fairfield Railway Station to Thornbury. The horse tramways were not widely adopted and only ran for short distances. A horse bus line opened in **High Street Malvern** on November 29 1886. It is not known when this service finished. At the same time the first cable trams were also being developed in Melbourne. The Prahran line opened in 1888 and the Toorak line in 1889. The powerhouse for both was located on the north west corner of **Toorak Road and Chapel Street**. No cable tram routes were ever built in the area formerly known as the **City of Malvern**.

The introduction of road motor vehicles, or buses, in Victoria dates from December 1905, when the Railway Department started a service between Prahran and Malvern. This innovation is understood to have been the first application in Victoria of self-propelled vehicles for public passenger traffic. The route chosen lay between **Prahran Railway Station** and **Malvern Town Hall**, traversing **Greville, Chapel** and **High Streets**.

Six kerosene-fired steam-powered Chelmsford buses were imported from England in 1905. Special bodies, with a seating capacity of 24 passengers in each vehicle, were built and fitted to the chassis at Newport Workshops. Maximum speed was 20 miles an hour.

On Friday December 1, 1905, the service was inaugurated, when No. 1 bus left **Prahran Station** for Malvern. Buses were timed to meet all trains arriving at Prahran from Melbourne. This schedule was not maintained owing to continual mechanical faults developing. Control of the service was directed from a small office at **Prahran Station**, with **John Thomas Reid** as **Traffic Superintendent**.

The service was abandoned about the middle of June 1906 as the novelty of motor transport had worn off for the local residents and its irregularity had resulted in the diversion of patrons to the comparatively reliable competing horse-drawn vehicles. For the seven months the buses were in service, they carried a monthly average of 56,000 passengers. The photo, taken in December 1905, shows a steam bus stopped at the level crossing in High Street Armadale. The shops in High Street and the **Malvern Town Hall** clock tower can be seen in the distance.



*Motor Service at the first section,  
Armadale Gates 1905 Reg No. 1252*

## Bombs Away

Who planted the bomb in **Linay's sawmill**? In 1933, **Linay's Sawmill** in Chapel Street had gone up in a spectacular blaze leaving nothing but charred beams, twisted remains of machinery and, towering over the ruins, the boiler chimney. And so it remained until the late 1950s, when a worker told the boss, **Jack Linay**, that there was a bomb among the ruins. He went to investigate with his niece, Elizabeth. Sure enough, there it was, a real bomb lying peacefully beside the chimney. Jack decided that it must be moved immediately in case it blew up and killed someone.



*Interior view of Linay's sawmill 1930's Reg  
No. 13354*

So, he and Elizabeth each took an end – Jack with his stiff leg and limp and Elizabeth formally dressed in her good blue dress and heels. Softly, softly, they carried the bomb to the timber stacking-yard and very gently placed it under a stack of timber, congratulating each other on possibly saving Prahran from a major catastrophe. Only then did they think to call in the army. The army bomb experts pronounced it to be a live bomb still complete with its detonator. Where did it come from? Who planted it? Does anyone know?

*Chapel Street frontage of Linay's timber yard.  
Undated Reg No. 13351*

## Information wanted!

The **Stonnington History Centre** is interested to hear from anyone with information about **Valency**, a large house that stood on the present site of **St Roch's Catholic Church** in Burke Road Glen Iris. (Contact **Stonnington History Centre 82901360**)

## Wattle Tree Hotel - Glendearg

**Wattle Tree Inn**, erected prior to October 1854 on 10 acres of land fronting present day Wattletree Road, included eight rooms with stables. The hotel hosted the first elections for the **Gardiner Road Board** (later **Malvern Council**) and was also the venue for the first meetings of the Board in November 1856. The hotel's first licensee was **Thomas Griffiths** in 1855, followed in 1861 by **John George Heywood**, who was largely responsible for the establishment of the **Caulfield Race Course**. Heywood was a member of the **Gardiner Road Board / Malvern Shire Council** from 1869 to 1889. He was Chairman in 1870, the first President of the Shire in 1871 and again in 1881-1883. The **Wattle Tree Hotel** was well known for its accommodation for racehorses, which were stabled at the inn and trained on the surrounding sandy land. The hotel was also a popular meeting place for hunt clubs, whose prey included foxes, hares, kangaroos, dingoes and deer.

The **Wattle Tree Hotel** ceased to be a hotel around 1868, when it became a private home and in 1873 the original 10 acres were subdivided. **Glendearg Grove** was created in 1888 and soon after, new owner **Thomas Thompson**, a former Sale Shire engineer re-named the house **Glendearg**. **Glendearg** is again creating interest with its planned auction in December 2008.

The **National Trust of Australia (Victoria)** describes **Glendearg** as *...a building of simple forms, with timber verandah and restrained colonial details, is of architectural interest as an early hotel which survives to illustrate the vernacular building traditions of early Melbourne. The meticulously maintained wayside inn is of local historical importance being the oldest surviving intact building in Malvern and closely connected with the social history and physical development of that suburb.*



Former Wattle Tree Hotel c1970 Reg No. 6519

## Information wanted!

A recent request for information related to the history of the **Chadstone Bowls Club**. The **Stonnington Local History Collection** file on the **Chadstone Bowls Club** is limited to a number of aerial photographs of the area and a small collection of correspondence and invitations mainly concerned with the **'Opening of the Greens'**. Please contact the **Stonnington History Centre 82901360** if you can help us to increase the collections relating to any of the sports clubs in Stonnington.

## Stonnington Research Enquiries

During the past few months the Society has received requests for information relating to private hospitals in Finch Street East Malvern, including **St Lorraine Rest Home** and **Strathmore Private Hospital**, a Muntz photo "George Smith from Beechworth", **Selina Grace Wearne**, **Sarah Ann Woodward** who married **Samuel Arthur Wearne** at 173 Malvern Road on 31/07/1920, after losing her 1st husband, a Mr. Hope in 1919, **Ada Fleckney**, a former resident of Mercer Road Armadale and a request from Milford Bay, Muskoka, Canada relating to **Janie Davis**, **Ruby Lillian** and **Gladys Vera Sawyer**. This unidentified house photo, thought to be in Malvern, accompanied the Canadian request. All of these requests have been researched and expertly answered by the **Stonnington History Centre** staff **Di**, **Ellen** and **David**.



## Chadstone High School- 25 Year Reunion

Do you know anyone who started Year 7 in 1979 and finished in Year 12 in 1984? A reunion for the past students and staff from this era will be held on 7 February 2009. For more information contact **Cathy Smith** [djacks@bigpond.com.au](mailto:djacks@bigpond.com.au) Telephone 0412 372 240

Chadstone High School Camp c1980

## Taking Local History to the Community

**President Lorraine Sage** and **Vice President Jane Nigro** represented the Society at the relaunch of the restored early Malvern Tram No 44 at the **Bendigo Tram Depot**. The tram is now in use as one of the fleet of talking trams used regularly as a Tourist attraction in Bendigo.

Our two new publications **'Back when...'** and **'i Spy Glenferrie Road'** were launched by the **Mayor, Cr. Claude Ullin** on Sunday the 23rd. November. Livingroom Restaurant and Café, 12- 18 Claremont Avenue Malvern, provided space for afternoon tea, for those actively involved in the project. We also used their windows to display a large display of photographs relating to the history of the local area. Take the opportunity to enjoy the display which is still in place.

**"Back when . . ."** is available at the **Stonnington Toy Library, Stonnington's Libraries, Information Victoria, The Royal Historical Society of Victoria, Books in Print, Stonnington Books, Classy Paperie**, 276 Waverley Road and **Darling South Post Office** 295 Waverley Road East Malvern. **'i Spy Glenferrie Road'** will be widely distributed in January.

**Lorraine Sage** and **Roxanne Dennis** attended the final meeting of the **Stonnington History Committee** for 2008. The five latest Heritage Markers to be placed around Stonnington include Flete, Chapel Street Church, Prahran Infant Welfare Centre, Prahran Bowling Club and Prahran newspapers. The Committee recommended the re-printing of the shortened version of the Stonnington Indigenous History.

The **Malvern Historical Society** would like to take this opportunity to thank **Steve Stefanopoulos** for his leadership, as **Chairman of the Stonnington History Committee**, over the past four years. His vision and enthusiasm has greatly influenced the success of so many Stonnington local history projects including the Heritage Markers Project, Stonnington Thematic Environmental History and the Stonnington History Centre at Northbrook.

The Committee enjoyed lunch with the **East Malvern Community Bank Chairman, Peter Norman, Branch Manager, Peter Wolff** and **Kerrie Wyer, Customer Relationship Officer**. The East Malvern Community Bank has donated over \$23,000 towards our Malvern Historical Society projects over the past eight years. The Society recently received a cheque from the **East Malvern Community Bank** to cover the reprinting of the very popular **Walk into history : six more great walks in Stonnington** by **Di Foster and Steve Stefanopoulos**.

The Society would like to thank everyone who responded to our unlabelled photo request.



*Relaunch of the renovated  
Malvern Tram No. 44 2008  
(Mal Rowe 2008)  
L to R Bendigo Tramways  
Superintendent Darren  
Hutchessen., Jane Nigro,  
Lorraine Sage and Ron  
Scholten*

## Additions to the Stonnington Local History Collection

Collection of slides showing the development of Malvern parks in the 1970s donated by **Philip Leahy**. Also photographs of **Northbrook's** 1980's renovation, loaned for copying.

Research information on the history of trams in Stonnington provided by **Ron Scholton** and **Mal Rowe**. **The Courier** monthly magazine of the **Gardiner Parish - St. Andrews Uniting Church, Gardiner** donated by **Lorraine Sage**.

**The Story of the Church of St Joseph's Malvern 1908-2008 History of St Joseph's Church**, donated by **Barry O'Sullivan**, Convenor of the Parish History Group.

Collection of photos of **St Hilary's**, Hilary Grove Glen Iris, c1940s  
Pastrycook's tray with inscription **W. Dance, Prahran**.

Loan of photos and slides of the construction of **Chadstone Shopping Centre** c1959

Photographs of the **East Prahran Fire Brigade**

Loan of photos 34 Burke Road and early tram at Central Park from **Sue Bowler**.



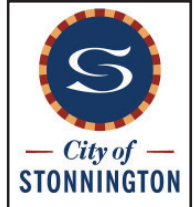
*St Joseph's Malvern 1908 Reg No. 9703*

### Have you enjoyed viewing the photos in this issue?

Material for the articles has been researched from the **Stonnington Local History Collection**. The database contains over 38,000 records. To view enlargements of photographs and to read more, just go to the website. [www.stonnington.vic.gov.au/history](http://www.stonnington.vic.gov.au/history)

East Malvern  
**Community Bank** Branch **Bendigo Bank**

300 Waverley Road, East Malvern. Phone 9563 6044



## Malvern Historical Society Inc. (A7682)

**P.O.Box 184, Malvern Vic 3144 Telephone: 0438 515 631 malvernhistorical@yahoo.com**  
**www.vicnet.net.au/~malvern**

The Malvern Historical Society Inc is a member of the Stonnington History Committee, an affiliated member of the Royal Historical Society of Victoria, a member of the South Metro History Group and has been appointed by the Public Record Office of Victoria as a Place of Deposit for non-permanent public records.

### OTHER STONNINGTON HISTORY CONTACTS:

Stonnington Local History Service [www.stonnington.vic.gov.au/history](http://www.stonnington.vic.gov.au/history) • Tel: 8290 1360

Prahran Historical and Arts Society P.O.Box 8649, Armadale Vic 3143 Tel: 9509 9978 [www.vicnet.net.au/~phas](http://www.vicnet.net.au/~phas)