

LOCAL HISTORY NEWS

Malvern Historical Society Inc. *Keeping Stonnington's History Alive!* December - January 2007-08 Newsletter No. 10

Heritage Walk Diary Dates for 2008

Sunday 10 February	The Olives & Arama Estates	Glen Iris
Sunday 16 March	Gascoigne & Waverley Estates	East Malvern
Sunday 13 April	Coldblo & Mount Pleasant Estates	Armada
Sunday 11 May	Great Malvern Park, Tennyson Park and Triple Railway Station Estates	East Malvern



Class IV A Warwick School, Finch Street 1940 Reg No: 1057

More details in next newsletter!

150th Member

The **Malvern Historical Society** is delighted to welcome **David Wischer**, as our 150th member! To mark this milestone, a collection of our local history books is on its way to David. This is the first time in 34 years that the number of members has hit 150!

Significant addition to the Stonnington Local History Collection

A private collector recently offered the Stonnington Local History Service a rare item of historic significance, a small silver and ivory **pocket vesta**. The item is significant to Stonnington as it features an inscription and a photograph of the first elected Malvern Mayor, **Cr. Louis Holmes**. This dates the item to 1901.

Louis William Holmes was born in England in 1858 and came to Victoria in 1887. An ironmonger, he established a business in Glenferrie Road Malvern, north of the corner of Edsall Street and lived at **Ronaldsay** in Winter Street Malvern. He was the Mayor of the Town of Malvern 1901/1902 and the City of Malvern 1919/1920 and a Councillor from 1898 to 1933.

Holmes was a member of the Masonic fraternity and President of the Toorak United Temperance League. On two occasions he unsuccessfully contested the Toorak seat in the State Parliament.

In August 1902, the **Prahran Chronicle** reported on the presentation to Mayor Holmes by Malvern Councillors of a silver cradle mounted on a platform of fiddle-back blackwood. The presentation marked the occasion of the birth of a daughter Doreen to Holmes and his wife Marion. Louis Holmes died in 1933. He is remembered today in Stonnington with Holmesglen Station, named in his honour.

J B Cooper's History of Malvern notes two highlights of his time as Mayor.



Front and reverse of Mayor Louis William Holmes' pocket vesta

1901

On November 4 1901, on the day of the arrival in Malvern of the new Governor **Sir George Sydenham Clarke**, a large and enthusiastic crowd of residents were waiting for him at the Shire Hall.

The streets of Malvern, along the highways that he passed, were gay with bunting. The Town Hall had long festoons of flags hanging from the towers.

Wreaths of greenery were used in the decorations, and a red carpet cloth was laid down from Glenferrie Road to the main entrance of the hall.

The Mayor, **Councillor Holmes**, was there with his cocked hat, in his robes of office. His Excellency the Governor and his party were

Continued page 2.



Arrival of the State Governor, Sir George Sydenham Clarke, at the Malvern Town Hall, 1901 Reg No: 1175

Continued from page 1.

received by the Mayor, the Mayoress, and the Councillors, and escorted into the Town Hall. The Mayoress presented Lady Clarke with a bouquet, and little Miss Holmes handed some flowers to Miss Clarke. The Mayor then read the Council of Malvern's address of welcome to His Excellency.

1920

His Royal Highness, the Prince of Wales visited the State Government House, Glenferrie Road, on Friday, May 28, 1920. A loyal welcome was offered to the Prince by the Mayor of Malvern, **Councillor L. W. Holmes**, and the Councillors, on behalf of the citizens of the vice regal city of Malvern.

Several thousands of people assembled at the intersection of Kooyong and Albany Road to cheer the Prince as he passed on his way to the State house. A decorated arch of great beauty spanned the roadway. This was the meeting point between the civic authorities and the Prince. There, in full official uniform was the Mayor and there too the Town Clerk. Mr. B. Crosbie

Enthusiastic cheers continued until such time as the Mayor, with all the Councillors of Malvern, stepped up to the motor car and presented to the Prince an address.

The Mayor's daughter, **Doreen Malvern Holmes**, presented a spray of Australian wattle blossom, which the Prince accepted with evident pleasure. In a few words to the Mayor, the Prince expressed his appreciation of the welcome.



First elected Mayor of the City of Malvern Cr. Louis W. Holmes 1911 Reg No: 1057



View looking south along Glenferrie Road. The corner of Edsall Street, close to the Cr Holme's ironmongery. c1910 Reg No: 1258

Wikipedia describes vesta cases or vesta boxes as small portable boxes with snap shut covers to contain vestas (short matches) and keep them dry. So called after the name of one of the early makers, they came into use around the 1830s and were produced extensively between 1890 and 1920.

They coincided with an explosion in the popularity of smoking and were made in every conceivable material including pressed brass, pressed tin, gunmetal, nickel, silver, ivory, wood, precious metals or enamelled. Generally they were made to be carried in the pocket.

The **Malvern Historical Society** has purchased the Holmes pocket vesta for \$200 and it now forms part of the **Stonnington Local History Collection**.

Toorak Teachers' College - Glenbervie

Former Toorak Teachers' College student Peter Morris recently donated 158 scanned photos. Peter attended the college in 1953-54, when it was at Glenbervie, Glenbervie Ave, Toorak.

They include photos of outdoor assemblies, assemblies at Gardiner Theatre, college sports, excursions, graduations, staff and students. Detailed photos of Glenbervie's interior, exterior and gardens also feature.



Under the portico after Graduation 1953

Help needed!

We have received an enquiry from a family researcher looking for information on the **Crabb/Yelland** families, part of the **Shiress** family line. They are known to have had connections with Prahran around 1893. (Jane 0438515631)



Thanks for your support during 2007. Enjoy the Festive Season!

Stonnington Heritage Markers

Cawkwell's Tile Works.

Henry Atkinson Cawkwell arrived from England in 1853. The following year he established a business as a tile manufacturer on the north-west corner of Tooronga Road and High Street, where the clay was ideal for tile making. The business developed from the manufacture of agricultural and garden pipes to brick-making. By the 1880s, geometrical, Roman mosaics and encaustic tiles and all types of terra-cotta were being made. As the business expanded, the site included three clay pits, a three-storey factory, engine-house and various outbuildings.

Cawkwell's **Australian Mosaic Tile Works** became an important supplier of mosaic floor tiles in the nineteenth century building boom. Cawkwell's tiles won awards at the 1880 Melbourne International Exhibition and were used in various churches, the former Victorian Railways Head Office in Spencer Street, Victorian State Parliament House and the Maryborough Railway Station. One of Cawkwell's employees, Edgar Walker, went on to establish the successful Australian Brick and Tile Company.

Henry Cawkwell was a member of the Gardiner Road Board and a Shire Councillor from 1869-1875. His business collapsed during the depression of the 1890s and he died in 1894. John Cartlidge, a former employee, took over the business and John Cartlidge & Son ran the **Australian Steam Pipe and Tile Works** until 1926 when the property was sold, the quarry holes were filled and the buildings, which included the factory fronting Euston Street, were demolished.

Two brick workers' cottages 1 and 3 Cawkwell Street are the only reminder of this important industrial complex. A heritage marker has been installed on one of the cottages. A Cawkwell tile catalogue, donated to the Caroline Simpson Library in Sydney, has led to further research relating to this important company. If you can help with more information please contact Di 82901360

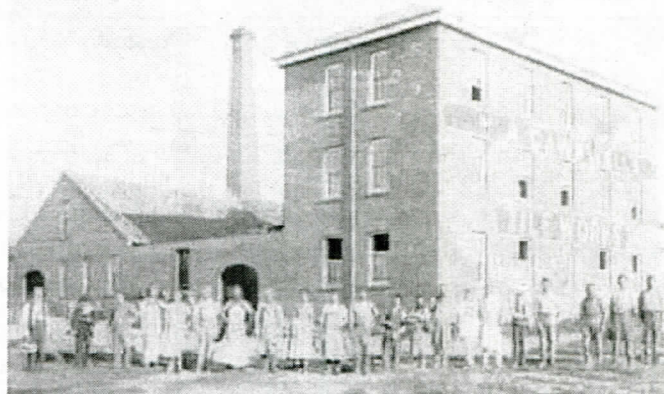


*Henry Cawkwell c1880
Reg No: 1451*

Glenbervie



Glenbervie c1890 Reg No: 1347



Cawkwell's Tile Works c1900 Reg No: 1450



Mrs Harper, Mrs Officer and Mary Davies c1880 Reg No: 1344

Glenbervie, a 30 roomed mansion, was built in 1883 to the design of Francis Maloney White, on 13 acres of land fronting Glenferrie Road. It was built for pastoralist **Suetonius Henry Officer** and his wife Mary. *Glenbervie*, named after the birthplace of the Officer family in Scotland, was also known as **Malvern House**. Land-boomer **Joseph Bartlett Davies** occupied the property in the 1890s followed by **George Stevenson**, one of the pioneers in the soft-goods trade in Australia. In 1907 new owner, pastoralist and racehorse breeder, **Alexander Creswick**, re-named the house **Yarrien**. In 1919, the Hamilton sisters re-located their school, **Toorak College**, from Douglas Street Toorak, to **Yarrien**, and the mansion was used to accommodate the boarders.

Essington Lewis, an industrialist and Wartime Director of Munitions, purchased **Yarrien** in 1926; the year he was appointed to the Board of BHP. Lewis renamed the mansion **Kooringa** after his birthplace in South Australia. It is said that Lewis made BHP one of the most efficient steel companies in the world. The estate was subdivided and **Kooringa** remained on an allotment in Hamilton Road. In 1942 Wesley College occupied the mansion, when the school's St Kilda Road buildings were taken over by the Army. From 1946-1971, the Red Cross used **Kooringa** as the **Lady Dugan Home**, where country children with polio or cerebral palsy could be treated. For three years, prior to **Kooringa** being demolished in the 1970s, it was occupied by a State Government run children's home. Hamilton Close was constructed on the site, to the design of architects Bates, Smart & McCutcheon in 1979.

Taking History into the Community

Our large photographic display, together with our promotional material attracted great interest during **Spring into Gardening** at Victoria Gardens. Thanks to Roxanne, Lorraine, Steve, Jane and Sally who answered questions, sold books and handed out brochures and children's puzzles. Another successful, high profile event for the Society!

While both our recent local history walks have been held on hot windy days they have been well attended. Thanks to **Fr Brian O'Sullivan** from **St Joseph's Church** for allowing us to visit inside the Church. Thanks also to Cr Steve Stefanopoulos for his animated and knowledgeable commentaries on all our walks during 2007!

The Society recently accepted an invitation from the **Glenferrie Road Traders** to be part of their promotional day. A number of shoppers passing by were able to ask questions, buy books and jigsaw puzzles and collect free promotional material. Thanks to Lorraine, Roxanne, Irene and Jane for their help.

Don't forget the 150th Anniversary photographs are currently on display at the **Harold Holt Swim Centre**, corner of High and Edgar Streets in Glen Iris.

Additions to the Stonnington Local History Collection

Archives of the **Malvern Ladies Benevolent Society** 1888 to 1972

Mayor, **Cr Samuel Hattam's**, City of Malvern diary 1933 and business cards, donated by Samlyn Crockett, daughter of Cr Hattam

Family history – Family of **William Sloggatt** (Chairman Gardiner Road Board 1862)

Collections of photos relating to **Stonnington**, houses, streetscapes, and signage from John Maidment, Irene Jablonka, Don Weston, and Lucien Bowden.



Mayor, Cr. Samuel Hattam
1928 Reg No: 166

Family History '**Vanderkelen' from Belgium to Australia'** (Australia 1880-1998) - made available to the Archives for copying by Tony Vanderkelen.

Members of the Vanderkelen family have a long association with Stonnington. In 1924 **Rene Vanderkelen** (1880-1960) was appointed Melbourne's Belgian Consul. The same year he commissioned renowned architect **Harold Desbrowe Annear** to build a house in Power Avenue Toorak. Rene lived with his wife at 8 Power Ave until his death in 1960. He served as **Belgian Consul General** for 27 years. Claude and Clara Vanderkelen built a home in Grandview Road Glen Iris in 1919. Claude Vanderkelen was made a Special Constable during the police strike in 1923 and received a certificate of appreciation from the City of Malvern. Their sons were students at **Malvern Grammar School** in Willoby Avenue. A daughter attended **St Catherine's School** and later lived in Armadale. Other members of the Vandekelen family attended various local kindergartens and schools including **Gardiner Central School**.

Welcome New Members!

Welcome to new members Cecily England, Chenxia Shi, Ken & Diana Holmes, Helen Stitt, Nadja Lobato, Matthew Port, Maree Bockholt, Mrs M Segal, and David Wischer.

Have you enjoyed viewing the photos in this issue?

Photos from the Stonnington Local History Collection appear with their reference number. To view an enlargement and read more go to the website below. Material for the history articles has been researched from the Stonnington Archives.

www.stonnington.vic.gov.au/library/history/catalogue/historysearch

SPONSORED BY:

East Malvern
Community Bank Branch **Bendigo Bank**

300 Waverley Road, East Malvern. Phone 9563 6044

Malvern Historical Society Inc. (A7682)

P.O.Box 184, Malvern Vic 3144 Telephone: 0438 515 631 malvernhistorical@yahoo.com
www.vicnet.net.au/~malvern

The Malvern Historical Society Inc is a member of the Stonnington History Committee, an affiliated member of the Royal Historical Society of Victoria, a member of the South Metro History Group and has been appointed by the Public Record Office of Victoria as a Place of Deposit for non-permanent public records.

OTHER STONNINGTON HISTORY CONTACTS:

Stonnington Local History Service www.stonnington.vic.gov.au/history • Tel: 8290 1360 • Tel: 8290 7160
Pahran Historical and Arts Society P.O.Box 8649, Armadale Vic 3143 Tel: 9509 9978 www.vicnet.net.au/~phas