

LOCAL HISTORY NEWS

Malvern Historical Society Inc. *Keeping Stonnington's History Alive!* August - September 2007 Newsletter No. 8

21 August Working Bee at the Stonnington Local History Service

Tuesday 21 August Between 10am and 12 noon. Join the volunteers in the archives at *Northbrook*, behind Malvern Library, High Street Malvern. All welcome! Please call Di on 82901360

28 Aug, 4 Sept, 27 Sep Tours of *Stonington* Mansion and Grounds

Designed by Charles D'Ebro for John Wagner and built by Stephen Armstrong, *Stonington* 336 Glenferrie Road Malvern, has been a private home, **State Government House**, **St. Margaret's School**, a hospital for victims of poliomyelitis and later for convalescent soldiers, **Toorak Teachers College**, the **State College of Victoria** and **Deakin University**.

Bookings are **essential** for the tours

Members – Gold Coin Non-members - \$5

To book or for further information, please call Jane 0438 515 631



John Wagner
c1895 Ref No: 5227

9 September Talk on *Stonington* mansion

Sunday 9 September 3pm (***) note this talk will be held at *Northbrook*)

Morna Sturrock AO author of "*Stonington, a Centenary History*" will talk about the fascinating history of *Stonington*. Find out why the spelling of the mansion has changed from *Stonington* to *Stonnington* and back to *Stonington*!

Northbrook, behind Malvern Library, High Street Malvern Delicious afternoon tea!

Members- gold coin Non-members \$5 RSVP call Roxanne 9885 7194



Aide de Camp, Stonington
c1920 Ref No: 921

30 September Malvern Village Walk

(Bounded by Toorak, Tooronga and Malvern Roads and Elizabeth Street)

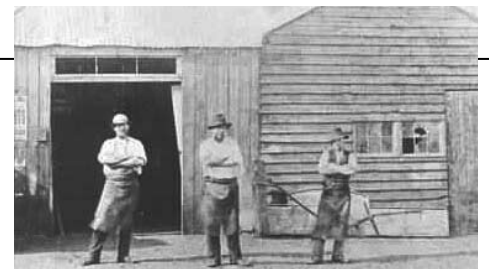
Sunday 30 September 2pm

Meet at Tooronga Station, Milton Parade, Malvern

Members- Gold Coin Donation Non-members \$5

(+ optional \$5 for New Walk Book!)

For further information, please call Steve 0418 546 103



Ilton's blacksmith's shop Elizabeth Street
c1880 Ref No: 587

14 October Spring Into Gardening at Victoria Gardens

Sunday 14 October between 11am and 4pm.

The Committee would love to hear from anyone who can help for an hour or two at this very popular event, held each year in the historic Victoria Gardens, High Street Prahran. Both our sales table and display always attract an interested crowd. Please call Roxanne 9885 7194. Any help appreciated! This is your chance to be actively involved in local history!

City of Stonnington Community Grants 2007-2008

The Malvern Historical Society is very pleased to announce that we have received Stonnington Community grants towards the printing of six Pocket Histories of Stonnington Landmarks, publishing a series of history brochures for children, Discovering Stonnington by Bus and the use of *Northbrook* for our meetings.

Rules of Incorporation

The Rules of Incorporation have recently been approved by the Deputy Registrar of Incorporated Associations. We have been informed that the Malvern Historical Society Inc, is now required to incorporate a new rule (Model rule 8), Disputes and mediation.

We do not need to hold a Special Meeting for this to occur. We agreed to circulate this advice with our next Malvern Historical Society Inc newsletter.

Disputes and Mediation

8.1 The grievance and procedure set out in this rule applies to disputes under these Rules between-

- (a) a member and another member; or
- (b) a member and the Association

8.2 The parties to the dispute must meet and discuss the matter in dispute, and, if possible, resolve the dispute within 14 days after the dispute comes to the attention of all of the parties.

8.3 If the parties are unable to resolve the dispute at the meeting, or if a party fails to attend that meeting, then the parties must, within 10 days, hold a meeting in the presence of a mediator.

8.4 The mediator must be-

- (a) a person chosen by agreement between the parties; or
- (b) in the absence of agreement-
 - (i) in the case of a dispute between a member and another member, a person appointed by the committee of the Association; or;
 - (ii) in the case of a dispute between a member and the Association, a person who is a mediator appointed or employed by the Dispute Settlement Centre of Victoria (Department of Justice).

8.5 A member of the Association can be a mediator.

8.6 The mediator cannot be a member who is a party to the dispute.

8.7 The parties to the dispute must, in good faith, attempt to settle the dispute by mediation.

8.8 The mediator, in conducting the mediation, must--

- (a) give the parties to the mediation process every opportunity to be heard; and
- (b) allow due consideration by all parties of any written statement submitted by any party; and
- (c) ensure that natural justice is accorded to the parties to the dispute throughout the mediation process.

8.9 The mediator must not determine the dispute.

8.10 If the mediation process does not result in the dispute being resolved, the parties may seek to resolve the dispute in accordance with the Act or otherwise at law

'Walk into History 4, Six more great walks in Stonnington'

The Malvern Historical Society's latest book '**Walk into History 4, Six more great walks in Stonnington**' by Di Foster and Steve Stefanopoulos has recently been published and is now available for sale at all Stonnington Libraries, the Stonnington City Centre (formerly Malvern Town Hall), Information Victoria's bookshop in Little Collins St, Melbourne and Stonnington Books in Glenferrie Rd, Malvern. An order form is enclosed.



Grades 3 and 4 St Joseph's Primary School 1910 Reg No: 256

The book covers areas never before written up as walks, including the area around Stanhope St, Malvern, Finch & Vincent Sts Glen Iris and The Avenue and The Grange in East Malvern. The book will be officially launched at our first walk for the 2007/08 season.

Information wanted!

Ewing Tennis Club was established in Waverley Road East Malvern in 1906. New courts were constructed on the site of the original Presbyterian Church (1891-1906), on the eastern side of the entrance to Ardrrie Park. In 1964 the Waverley Road site was sold and redeveloped. New tennis courts were constructed for Ewing Church in Ardrrie Park and the original tennis pavilion was relocated next to the courts. The **St John's Tennis Club** was established some time prior to 1956 and it is thought that the club has been at Ardrrie Park since that time. In 1997 the tennis clubs of St John's Church and Ewing Memorial Church amalgamated to form the **Ardrie Park Combined Churches Tennis Club**. Information is needed about the early days of both **Ewing Tennis Club** and **St John's Tennis Club** particularly with regard to the clubs' establishment.



The caretaker's cottage in Ardrrie Park c1920 Reg No: 279

We are also looking for any photos. Please call Di 8290 1360 if you can help.

Indigenous History of Stonnington

AN INDIGENOUS HISTORY OF STONNINGTON A REPORT TO THE CITY OF STONNINGTON BY DR IAN D CLARK LAURA M KOSTANSKI SCHOOL OF BUSINESS UNIVERSITY OF BALLARAT 30 JUNE 2006

Local councils spend their rates and other income on many very important items including roads, parks, libraries, health services and so on.

The City of Stonnington is to be commended for commissioning this **Indigenous History of Stonnington** report, which provides comprehensive details of interactions between the indigenous people and early settlers in Victoria from 1835 onwards.

This report was launched on 12 July 2007 at the Toorak / South Yarra library, a site very close to some of the very early indigenous / white interactions. Copies are available in Stonnington's libraries.

Topics successfully canvassed in this publication include pre-invasion life and culture, the Yarra Aboriginal Village Mission under George Langhorne, the Chief Protector George Augustus Robinson and the importance of the river system especially the Yarra. Included in the report are some very interesting paintings and maps.

To summarise, the cultures of the two groups were quickly in direct conflict on many fronts but particularly over land use.

The indigenous people travelled across their land and "had to work only about five hours a day" whereas the settlers began farming, building a city and conducting business and starting industries with attendant fencing and close land settlement.

Very quickly the indigenous people faced huge difficulties in maintaining their traditional cultures after exposure to white people's practices. This report covers very important issues in a clear systematic way. Of particular relevance is its very detailed bibliography which will enable students and others to further evaluate this very important area of historical analysis. It demonstrates that dire consequences often occur from adoption of poorly thought through policies even if well intentioned. This is an excellent work of interest and relevance to anybody involved or concerned with indigenous and white issues. Many of the observations in this work are still relevant for today's problems. I commend this report to all students of and others interested in Australian history particularly its indigenous aspects. **Peter Frawley July 2007**



Gleneagles Kooyong Road Toorak 1939 Reg No: 256

Inscription on reverse of photo:

"Tree on Gleneagles Kooyong Road Property W H Lewis being part of the property of Robert Power. Tree known as the 'Aborigine Gum Tree' from which a slice of the bark was removed by aborigines for a canoe in the Yarra close by. Under the tree Adam Lindsay Gordon who was a frequent guest at the home of Mr & Mrs Robert Power wrote several of his poems. B. Crosbie Gould. TC 26.9.39"

(B. Crosbie Gould was the Town Clerk of the City of Malvern. Gleneagles was previously known as Myrnong and a subdivision of part of this estate in 1923 created Myrnong Crescent and Turnbull Avenue, Toorak)

Winners with two Commendations and shortlisting!

We are delighted to announce that the **Malvern Historical Society** won two Commendations when the **Victorian Community History Awards** were announced at a ceremony held on Saturday 30 June at Queen's Hall Parliament House. **Walk into History 3: Six more great walks in Stonnington** drew praise from the judges who wrote "its good maps and informative commentaries take the walker through interesting streets as well as open space at Gardiners Creek. It was a polished publication".

The second Commendation went to our website www.vicnet.net.au/~malvern, a Work for the Dole project with Taskforce-Working Edge which was described by the Judges as "inviting with its photos, transcripts of interviews, a guide to the historical society and 'snippets of history'. We were also pleased earlier in the year to be shortlisted, together with the Duldig Gallery in East Malvern, for a **Victorian Museums 2007 award**.

Taking Local History to the Community

Art Deco talk. The Society arranged an afternoon meeting on Sunday 24 June at which the President of the Art Deco Society, **Robin Grow**, presented “**Melbourne Before TV**” during which he provided a great deal of information on art deco. His slides and lecture included detailed information on the McPherson’s buildings in the city, houses in Toorak and Malvern, picture theatres and the influence of art deco on household items, aeroplanes and cars. It was a most enjoyable function attended by over 20 people followed by a fine afternoon tea.

Steamtrains

In conjunction with the **Steam Train Association** and the **Waverley Historical Society**, the Society had a stall and photographs on display at Darling Station on Sunday 1 July to celebrate the arrival and departure of steam trains running between Darling and Glen Waverley Stations. Thanks to Roxanne, Lorraine, Irene, Jane and Steve who provided assistance at this opportunity to present the Society to the over 4000 train travellers. Over 400 of our **Stonnington children’s puzzles** were handed out and proved to be very popular.



Steam Train, Darling Station I. Jablonka 2007

Outer Circle Railway

Railway enthusiast **Arthur Tonkin** was our guest speaker on Sunday 22 July. The meeting attracted a crowd of 64 people who were all fascinated by Arthur’s stories and information. Thanks again to the Committee for the excellent afternoon tea.

Donations to the Local History Collection

Anonymous donation of **Gardiner School** material including sports pennants, students record books, school information packs, newspaper articles, school readers etc.

In 1914 around 2 acres of land were excised from the **Tooronga Estate** for the Gardiner State School. The school, which included central classes from 1916, occupied the site from 1915 to 1992. The **honour boards** were removed from the school following its closure in 1992 and now hang at Malvern Central School in Spring Road).

Mount Wise and Willis family photos lent for copying by Ann Irwin. **Mount Wise** 29 Mercer Road was built by **W.S. Willis** and lived in by his family from 1891 to 1897.



The Willis family and visitors at Mount Wise 1890's Reg No: 9408

Welcome New Members!

Welcome to new members **David Hunter, Noel Hoitinga, Gilah Leder, June and Graeme Lee and family, Margaurite Garcia family, Anne Irwin and Ron Bennett family.**

Have you enjoyed viewing the photos in this issue?

Photos from the Stonnington Local History Collection appear with their reference number. To view an enlargement and read more go to the website below. Material for the history articles has been researched from the Stonnington Archives.

www.stonnington.vic.gov.au/library/history/catalogue/historysearch

SPONSORED BY:

East Malvern
Community Bank Branch **Bendigo Bank**



300 Waverley Road, East Malvern. Phone 9563 6044

Malvern Historical Society Inc. (A7682)

**P.O.Box 184, Malvern Vic 3144 Telephone: 0438 515 631 malvernhistorical@yahoo.com
www.vicnet.net.au/~malvern**

The Malvern Historical Society Inc is a member of the Stonnington History Committee, an affiliated member of the Royal Historical Society of Victoria, a member of the South Metro History Group and has been appointed by the Public Record Office of Victoria as a Place of Deposit for non-permanent public records.

OTHER STONNINGTON HISTORY CONTACTS:

Stonnington Local History Service www.stonnington.vic.gov.au/history • Tel: 8290 1360 • Tel: 8290 7160
Prahran Historical and Arts Society P.O.Box 8649, Armadale Vic 3143 Tel: 9509 9978 www.vicnet.net.au/~phas