

LOCAL HISTORY NEWS

Malvern Historical Society Inc. *Keeping Stonnington's History Alive!* April - May 2007 Newsletter No. 6

29 April APRIL HERITAGE WALK

Powers's Paddock, Toorak

(bounded by Glenferrie, Toorak and Kooyong Roads and Gardiners Creek)

Sunday 29 April 2pm

Meet corner of Glenferrie Road and Power Street Toorak

Members - Gold Coin Donation

Non-members \$5

(+ optional \$5 for New Walk Book!)

Enquiries Jane 0438 515 631



Connie Power (Mrs. Herbert Power) 1919. Reg No 507

2 May MALVERN HISTORICAL SOCIETY INC - ANNUAL GENERAL MEETING

Wednesday 2 May 8pm

Northbrook, behind Malvern Library, High Street, Malvern.

RSVP Jane 0438515631

(Members please refer to the enclosed notice for further details.)

After the formal part of the meeting, Bruce McBrien, President, will speak about

"Some Grand Houses of Melbourne - their fascinating owners and the other interesting people."

26 May BUS TRIP

Keeping Up With The Neighbours!!

Join Bruce McBrien on a guided bus tour past some of Stonnington's outstanding mansions.

Saturday 26 May. 2pm - 4pm

Members \$10 Non members \$13

Supported by City of Stonnington Community Grant

All welcome! Bookings essential.

RSVP Jane 0438 515 631



Valentines Harold Avenue Glen Iris c 1930. Reg No 290

Members of the Society were saddened to learn of the death of Mrs. Margaret Howie. Margaret was an active member of our Society for 33 years and served on the Committee for many years.

Her grandfather Roderick McLean lived at *Manning House* in Manning Road and had a 25 year association with Ewing Memorial Church. Margaret always enjoyed collecting treasures for the Local History Collection.

Two of her children, Elizabeth and Gregor, have donated a fascinating collection of Margaret's family's toys and household memorabilia to the Stonnington Local History Service.



Manning House 101 Manning Road East Malvern c 1890. Reg No 6563

A Water Establishment in Toorak

In 1858 a syndicate, including Frenchman Armand Auguste Fortune LaMoile and his wife Caroline, purchased block two of Skinner's subdivision, close to present day Hopetoun Road. The Gardiner Road Board rate book at the time noted the erection of a brick and 'pisa'[sic] mud house of seven rooms on the site and in 1861 M. LaMoile opened the Malvern Hill Water-cure Establishment.

M.LaMoile advertised his business extensively "The Establishment is retired, elevated and commands an extensive view of the Bay and the Dandenong ranges; the neighbourhood is richly wooded; the grounds contain many appliances for the recreation and exercise of the Patients; the air is celebrated for its purity and bracing quality, the soil being sandy and gravelly; remarkably dry and healthy, allowing the free exercise of walking at all season."

An omnibus ran daily from South Yarra Railway Station. Guests could arrive in the afternoon and in the evening take the cure. They could then enjoy the pure and bracing air and the various amusements provided for the recreation of the body and the mind. Next morning they could again take the cure and be back in town by 10 o'clock. Mrs LaMoile conducted the domestic arrangements and made sure the ladies received every possible attention and comfort.

One patient, Sir Edward Buliver Lyton, is quoted in the Establishment's brochure. "Three weeks at Malvern will do more than three months at Brighton or St Kilda, for at the Water-cure the whole life is one remedy."

Although the connection of water to the district had been anticipated, LaMoile's business closed in 1865, four years before Yan Yean water reached the district.



Malvern Hill Hotel and surrounding area soon after the closure of the Water Establishment c 1870. Reg No 1239

8.

VICTORIA

WATER-CURE

Establishment,

MALVERN HILL,

NEAR TOORAK.

CONDUCTED BY M. LA MOILE.

MELBOURNE:
PRINTED BY CLARSON, SHALLARD, & CO.,
85 BOURKE STREET EAST.
1861.

27 SEP 1861

TERMS,

INCLUDING Board, Residence, Treatment, and Bath Attendance, Five Pounds Five Shillings per week

The Blankets, Sheets, and Bandages, requisite for the treatment, may be purchased at the Establishment, and are taken away by the Patients.

Patients, if attended at their own residence, Two Pounds Two Shillings per week.

Patients, on entering the establishment, cannot be charged for less than a week.

Daily Patients One Pound One Shilling per day.

Visitors staying with Patients will be charged 2s. for Breakfast, 3s. for Dinner, 2s. for Supper, and 3s. for Bed.

monthly

ALL ACCOUNTS SETTLED IN ADVANCE.

ADVICE TO THE POOR GRATIS.

VISITORS WILL BE REQUIRED TO INSERT THEIR NAMES AND ADDRESSES IN THE VISITORS' BOOKS.

The Establishment is within five miles of Melbourne and two from the Railway Station. An Omnibus runs at 9 a.m. and returns at 5 p.m.

For further particulars apply to

M. LA MOILE.

Images reproduced with permission from the Rare Printed Collection, State Library of Victoria

Who's Who in Stonnington - The Ebbott Family

The family of Cornish born, Philip Henry Ebbott and his wife Elizabeth Mary (Temby) and their descendents have lived in Stonnington for over 100 years.

Philip, Elizabeth and their 11 children lived at Kooyong in Warra Street Toorak on a large property with cows and an orchard. Philip liked to boast that the cows could produce milk with cream so thick that it could support one pound in weight!

The family had a range of business interests throughout Malvern. Around 1910 the Ebbott family conducted a grain and produce business at 234 Glenferrie Road Malvern with Mr. Walklate. The single storey building, with walls of corrugated iron, had a timber post verandah. Signage included the name and telephone number, and advertisements for furniture removal, seed, firewood, box iron bark & red bark, coal and poultry food. From 1917 they are also listed as fuel merchants at 61-67 Station Street, close to Malvern Railway Station. Arthur Ebbott owned a successful glass business known as The Malvern Glass Company in Glenferrie Road and another fuel and grain business owned by the Ebbotts was situated north of Wattleree Road, on the east side of Glenferrie Road.

One of Philip's sons, Francis Bone Ebbott, lived at 16 Lysterville Avenue, Malvern, and had a grain merchant business in Collins Street, Melbourne. One of his sons Vivian Francis Ebbott became a prominent Melbourne and Malvern dentist, official dentist to Government House, and Honorary Dentist at the Royal Melbourne Hospital. A second son, Reginald Harry (Rex) was a director of Real Estate Agents, Abercromby and Beatty, and in addition an Honorary adviser to the glass collection of the National Gallery of Victoria for 46 years, and the University of Melbourne glass collection.

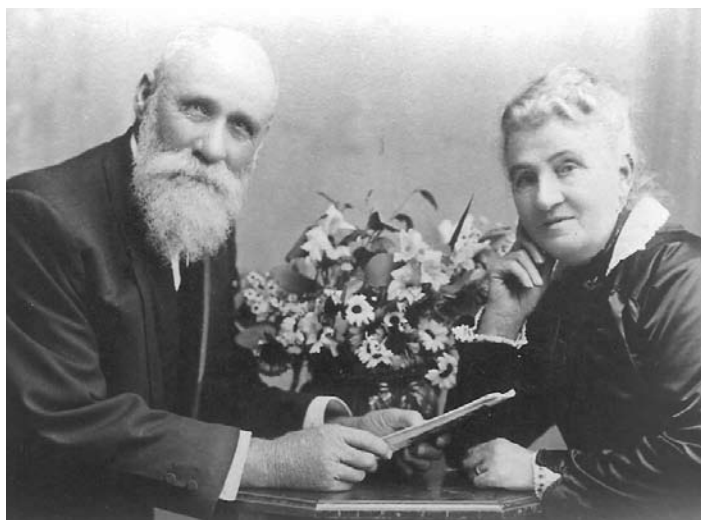
The laneway between Claremont Avenue and Soudan Street has recently been named Ebbott Lane



Ebbott and Walklate grain store, Glenferrie Road 1910. Reg no 513



First tram passing the Ebbott Produce store, Glenferrie Road 1910. Reg no 1247



Philip and Elizabeth Ebbott c 1920.



Members of the Ebbott Family at Warra Street Toorak 1912.

TAKING LOCAL HISTORY INTO THE COMMUNITY

The text is currently being revised for a wide range of Heritage Markers including Armadale House, Blind Cricket Site, the former mansion *Kooringa* in Glenferrie Road, the First Prahran Market and Prahran's First Church. Malvern's missing Mayor project continues to receive excellent publicity. Recent acquisitions have included photos of former Mayors Leslie Montague and Tom King. The Malvern Historical Society stall and display attracted a great deal of interest at Pets in the Park at Central Park. Our volunteers, Roxanne, Lorraine, Anne, Denis, Steve and Jane were kept busy answering questions and handing out children's puzzles.

DONATIONS TO THE LOCAL HISTORY COLLECTION

Lovell Chen "Malvern Gardens Conservation Management Plan" (2006)

Malvern Grammar Memories (a bound volume of archival material including documents and memories) donated by Caulfield Grammar School

Set of 2006 Church notices for St James Glen Iris donated by Jim Whitehead

Thomas Pockett Collection including copies of photos, documents, certificates and catalogues loaned for copying by the Pockett and Orange families.

Coghlan's Dairy, Fisher Street, East Malvern loaned for copying by Bernadette Logan.

Set of 2006 Church notices for St.Roch's Glen Iris donated by Rev. Father Ian Waters

Photos of Henry Higgins loaned for copying by Mrs.G.Morrison.

Photos of **Heathfield** loaned for copying by Coral Schilling (nee Wright).

The photos were taken at **Heathfield** during 1944-45 when the Salvation Army occupied the building. At that time **Heathfield** was also used as a hostel for WAAF service women. Coral's mother Eunice Wright was the assistant matron at this time.



Heathfield Kooyong Road Toorak c.1944.

Eunice and Coral Wright c.1944.

Heathfield Kooyong Road Toorak c.1944.

Welcome new members!

Welcome to new members Richard and Sue Crothers, Alison Owen, Alex Wood, Lynette Williams, Geoffrey Pryor, Tony Bosch-Reitz, Jan Ralph and Joan James.

Have you enjoyed viewing the photos in this issue?

Photos from the Stonnington Local History Collection appear with their reference number. To view an enlargement and to read more go to the web site below. Material for the history articles has been researched from the Stonnington Archives.

www.stonnington.vic.gov.au/library/history/catalogue/historysearch

SPONSORED BY:

East Malvern
Community Bank Branch **Bendigo Bank**



300 Waverley Road, East Malvern. Phone 9563 6044

Malvern Historical Society Inc. (A7682)

P.O.Box 184, Malvern Vic 3144 Telephone: 0438 515 631 malvernhistorical@yahoo.com
www.vicnet.net.au/~malvern

The Malvern Historical Society Inc is a member of the Stonnington History Committee, an affiliated member of the Royal Historical Society of Victoria, a member of the South Metro History Group and has been appointed by the Public Record Office of Victoria as a Place of Deposit for non-permanent public records.

OTHER STONNINGTON HISTORY CONTACTS:

Stonnington Local History Service www.stonnington.vic.gov.au/history • Tel: 8290 1360 • Tel: 8290 7160
Prahran Historical and Arts Society P.O.Box 8649, Armadale Vic 3143 Tel: 9509 9978 www.vicnet.net.au/~phas