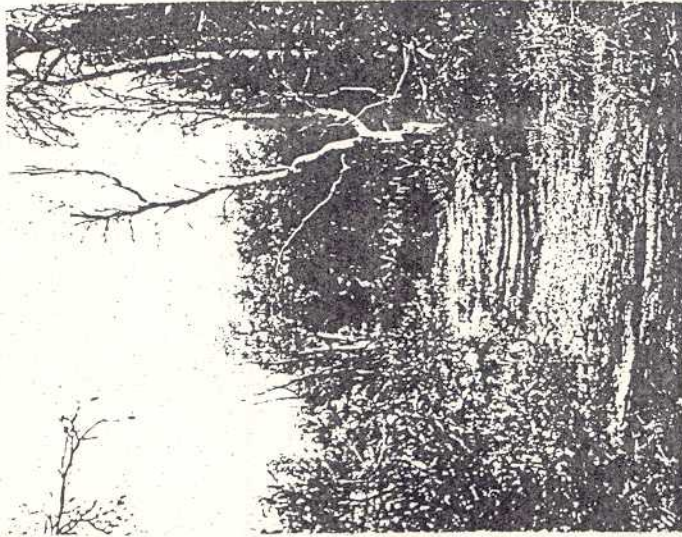


KANANOOK

WALKING TRAILS



ARMSTRONGS ROAD

TO

RIVIERA CROSSING

TRAIL NOTES

- prepared by -

KANANOOK CREEK ASSOCIATION

The trail begins near the Armstrongs Road rail crossing and follows the top of the dune through to the Riviera Crossing.

1. An extensive planting programme was made during the autumn and winter of 1992 and many grasses and rushes can be seen along the trail. The marker locates the site of a copse of Drooping She-Oaks (*Allocasuarina verticillata*) which can be seen off to the sides.
2. The trail has been stabilised at present by a layer of tea tree chips. These were produced as part of a fire-fuel reduction programme when the twiggy branches of the tea-trees killed in the 1988 wildfire were cut, chipped and returned to the reserve.
3. The She-Oaks are the first step in developing two sections of woodlands in the open areas near the start and near the middle of this reserve.
4. The flood plains along this part of Kananook Creek together with the high dunes where the trail is located offer an opportunity to develop the creek as a habitat for water birds with a hide built on the dune and accessed from the trail.
5. Nice stands of mature banksia and tea-tree still remain as a reminder of the past at the northern end of the reserve.
6. The trail in this section of the reserve ends at the Riviera crossing where a bare sand area is being regenerated with trees and ground cover, particularly grasses, sedges and pig face.

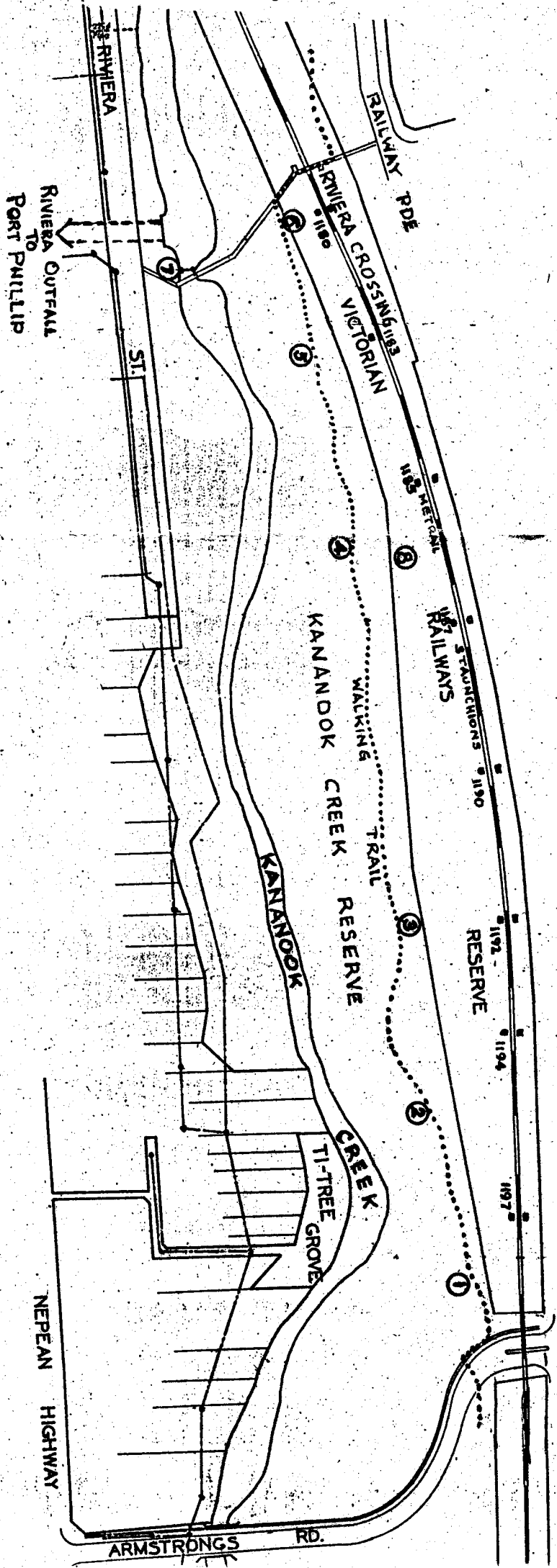
7. A stroll down the path to the Riviera outfall on Kananook Creek can be of interest. At this point there is a connecting tunnel to Port Phillip with control gates from the creek and flow control gates across the creek below the outfall. This feature allows flood waters coming down the creek to be diverted to Port Phillip and also allows high water in the creek to be diverted at low tide.

8. On the edge of the reserve between Metrail staunchions 1185 and 1187 there is an excellent area of mature grassland with many species of grasses, sedges, rushes, herbs and wildflowers. This area is a source of seed collection by the KCA for propagating plants for later planting into the creek reserves.

APPROXIMATE WALKING TIME
20 MINUTES

For further information contact

786 8936, 789 0598 or 770 1568



Drawn by Allan Sisson
12.10.1992