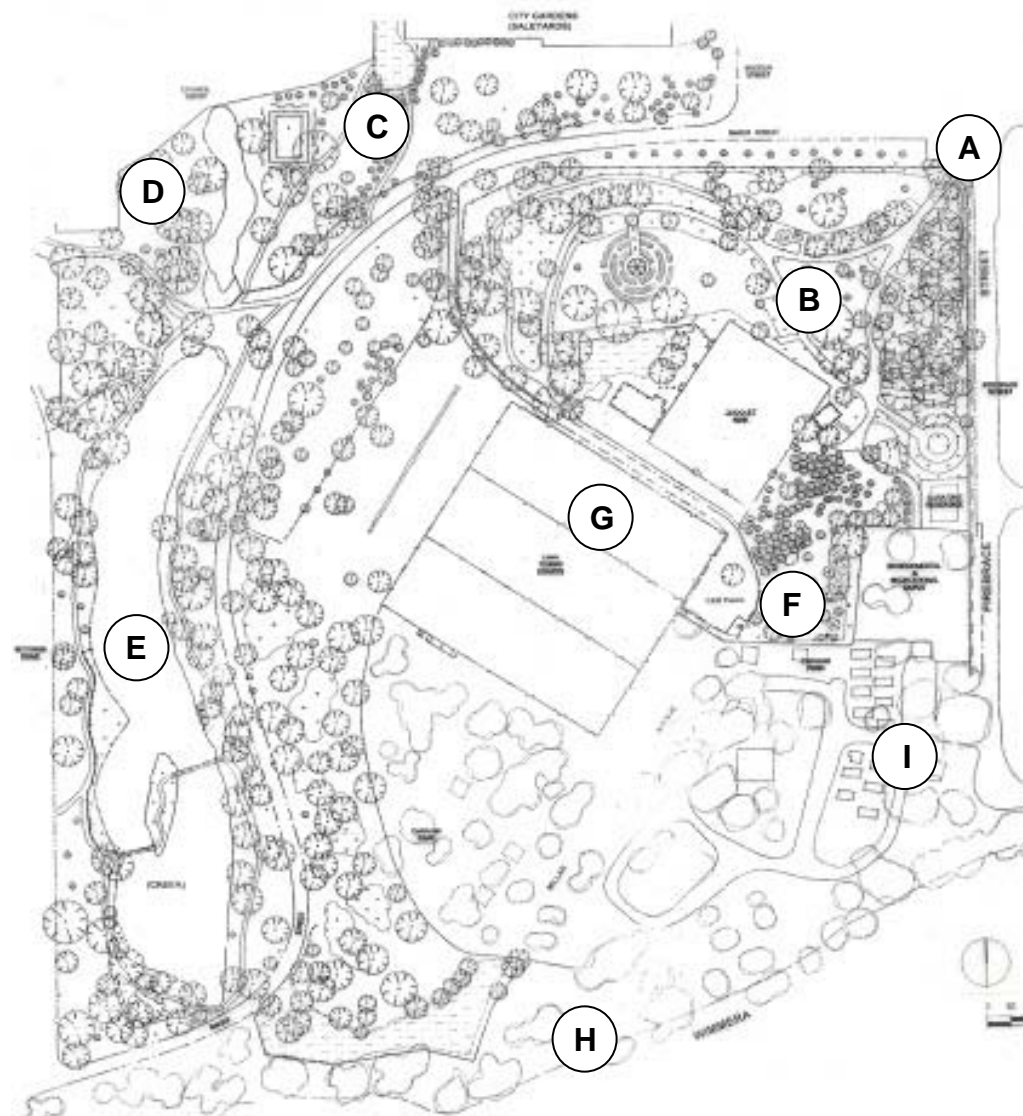


a cluster of cosy lawns, shaded by trees and interspersed with small horticultural features. Canary Island palms feature prominently, as does a large Bunya Bunya pine at the main entrance (leaning at a considerable angle). A pond in the shape of Australia was added in the 1930s by Ernest Lord, a major figure in the history of Australian gardening. More recent features include a rotunda, rose garden, pergola, display garden, Australian native garden and barbecue/playground area.

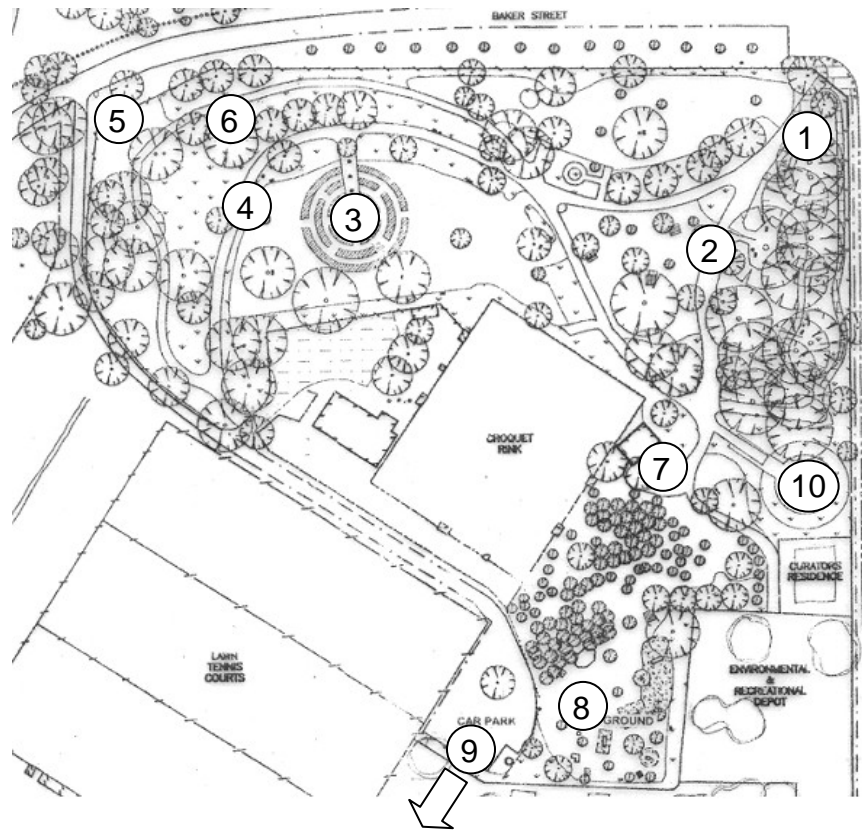
A large part of the original reserve still exists outside the boundaries of the formal garden area and is of environmental and historical importance. Throughout the reserve, there are numerous trees endemic to the area, some bearing scars from aboriginal bark removal. A memorial to the original inhabitants has been erected in the north-western corner, alongside artificial native wetlands. Large ponds down much of the western side attract birdlife. There is a dryland garden, featuring plants requiring little maintenance, as well as an area for native grasses.

The reserved is managed by Wimmera Rural City Council (Tele: 03 5382 9777). More information is available from <http://www.vicnet.net.au/~horbotgd/>



- | | |
|------------------------------------|---------------------------|
| A. Entrance to formal gardens. | F. Playground |
| B. Formal gardens | G. Tennis & croquet clubs |
| C. Wetlands & aboriginal sculpture | H. Wimmera River |
| D. Dryland native garden | I. Caravan & camping park |
| E. Lake, island & bird platform | |

Horsham Botanic Gardens



Formal Gardens

1. Bunya Bunya pine (*Araucaria bidwillii*) from seed donated by Ferdinand von Mueller, and main entrance gates
2. Canary Island palms (*Phoenix canariensis*)
3. Rose garden and rotunda
4. Memorial hedge of grey *Acacia pendula*
5. Wimmera rare plant exhibit
6. Australian native plants
7. Australia pond and toilets
8. Playground and barbecue area
9. Millar Avenue of sugar gums (*Eucalyptus cladocalyx*) through camp site to Wimmera River
10. Display garden

Horsham is 301 km from northwest of Melbourne, on the Western Highway towards Adelaide. The Botanic Gardens date back to 1878, when a block of 40 acres (16 hectares) was reserved alongside the Wimmera River. A layout for the gardens was drawn up by William Guilfoyle, then Director of the Royal Botanic Gardens, Melbourne, in 1880. The design was in the parkland style, popular at the time.

The present gardens bear little resemblance to the original plan. Early on, an avenue of sugar gums was planted diagonally across the site (Millar Avenue, still in existence). A fountain, now converted to a garden bed and shaped as a crown, also dates from that period. Over the years, land was set aside for tennis and croquet clubs, a caravan and camping park, and for car parking. The gardens thus became consolidated into just eight acres in the north-eastern corner of the reserve. Instead of broad vistas across an artificial landscape, the gardens became