



Lets talk Photoshop

Adding a Watermark

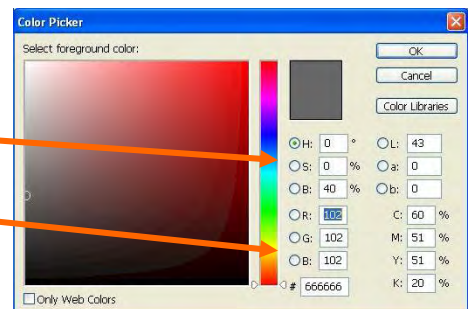
With the recent upgrade of the Web site it is now possible to have some of your images on display to the world. This may present issues for some members concerning protecting their work and discouraging people from copying the image or claiming them as their own. If this is a concern to you then here is a simple way to add a watermark. The text always remains editable so it can be changed as the mood grabs you.

As this watermark will probably be used often, we will create a file that can be added to an image anytime you want

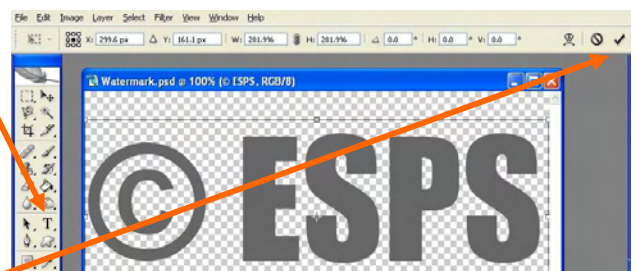
1. Our Webmaster has standardized on images which are 600 px (pixel) x 800 px at 72 dpi (dots per inch) so create a new image 600 px square. (File > New)



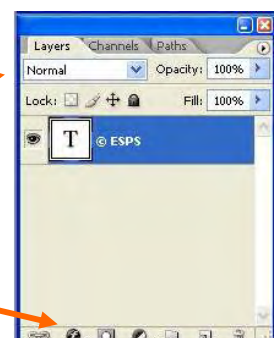
2. Click the color swatch, and set the color to 40% gray.
Use HSB values 0-0-40
OR
RGB values 102-102-102.



3. Select the type tool and enter the copyright (©) symbol (Alt+0169 using the numeric keypad or Option-G on a Mac) plus any text you want.
4. Adjust the bounding box so the text just fits inside.
5. Now select free transform (Edit > Free transform—short cut Ctrl-T) and while holding the shift key drag the corners until the text fills the screen.



6. Click the tick to exit the type tool
7. Set the layer mix type to Hard Light

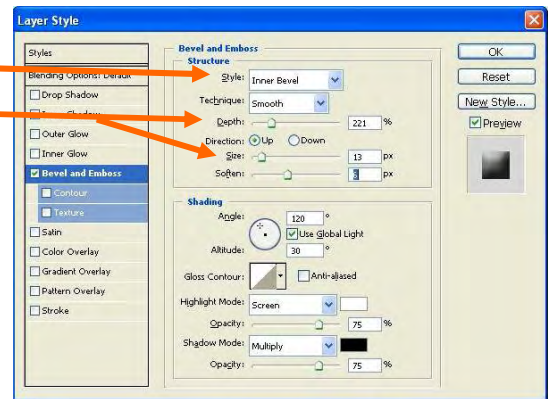


8. Click on the styles symbol (f). And select Bevel & Emboss



- Set the style to inner Bevel, change the depth & size until you get a pleasing effect then click Ok.

Save the file as Watermark.psd



Now to get the image ready for the webmaster

- Open your image.
- Select the crop tool
- Set the width to 800 (if landscape) or height to 600 (if portrait) and resolution to 72.
- Drag your cursor to select the part of the image you want. Use the handles to adjust the edges if you did not quite get it right the first time.
- Double click to apply the crop. You now have the image at the correct size for the web page.
- Now open your watermark.psd file
- Select the move tool and drag the watermark onto your image.
- You can position the watermark anywhere you desire or stretch or shrink it using the transform tool (Ctrl-T)
- If you want to have the watermark at an angle select the text tool click on the watermark text with your cursor outside the bounding box click & drag & you will see the text rotate. Stop when you are happy.
- Click the tick, save the file as a jpg and send it to the webmaster.

