

The Surf Coast Family History Group

Vol. 63 Autumn, March 2017 Edition

(Sub group of the Anglesea and District Historical Society Inc.)

Inverlochy Log



From painting by Geoffrey Soames

In this issue....

- Upcoming Events
- News and resources
- Early Anglesea Families – Mawson
- Mystery Postcard

Quarterly Journal of The Surf Coast Family History Group

Proudly supported by

Anglesea & District
Community Bank® Branch



Bendigo Bank

RAFFLE RESULTS from the SCFHG Christmas Raffle

First prize, ticket number A151 won by Marilyn Wendt

Second prize, ticket number A 042 won by Bev. Wignall

We have a wide range of indexes both Australian and overseas. We have internet access for researching.

Our equipment includes computers, scanners, printers, microfiche readers and an extensive library.

Need help with your research? Call in and we will help.

Library and Research Facilities

Tuesday 10.30am - 1.00pm

Wednesday by appointment

Saturday 10.30am - 1.00pm

Meetings held on

the 2nd Thursday of the month

commencing at 10am at History House

unless an excursion has been scheduled

5a McMillan Street Anglesea 3230

Visitors Welcome

Enquiries:

Susan Clarke: Phone 0438 070 560

Forthcoming Meetings

MARCH OUTING - Thursday 9 March

Tour of *Coragulac Homestead*

Leaves History House 10.00am

Cost \$40 includes transport, morning tea and lunch

Booking front desk or Jan 5263 3085

Bookings and prepayment essential

APRIL MEETING - Thursday 13 April 10.00am

Speaker - Dot Hutton

Topic - Discovery Through DNA

MAY MEETING - Thursday 11 May 10.00am

Speaker : Neil Thomas

Topic "Cousin Jack's Everywhere", A collection of Cornish Families.

JUNE MEETING— Thursday 8 June

Speaker - John McKay

Members and Visitors welcome to all activities.

No activities held on days of code red or extreme fire danger for the Central Region.

This newsletter is available electronically. If you wish to receive an electronic copy please email us on

surfcoastfh@gmail.com

Committee Members 2016 - 2017

Chairperson

Secretary

Treasurer

Website

Committee Member

Committee Member

Committee Member

Jan Morris: davejanmorris@bigpond.com

Susan Clarke: susanclarke3230@hotmail.com

Chris Guerow chrisguerow@gmail.com

Peter Matthews: matthews@melbpc.org.au

Gwen Morgan: (03) 5263-1865

Dulcie Quinlan: dulcieq@bigpond.com

Marilyn Robinson: (03) 5263-1338

The Anglesea Family History Group does not hold itself responsible for the accuracy of the statements or opinions expressed by authors of articles published in this magazine

News and Resources

Western Australian Biographical Index

Those with connections to Western Australia should take a look at the index online. See details at:

<http://www.gouldgenealogy.com/2016/11/western-australian-biographical-index-online-free/>

England and Wales Wills and Probate

Wills and probate may be searched and ordered for people who died in or after 1858 to current times. A 'grant of representation' gives someone the legal right to deal with a deceased person's estate but not all grants of representation contain a will.

<https://www.gov.uk/search-will-probate>

PRONI launches free online historical maps viewer

The Public Records Office of Northern Ireland has launched a free online historical maps viewer for the six counties of present-day Northern Ireland: Antrim, Armagh, Down, Fermanagh, Londonderry, and Tyrone. It allows you to search and browse seven historical Ordnance Survey Maps and four contemporary base maps (including aerial imagery), and displays county, parish and townland boundaries, as well as information on sites, buildings and landmarks of historical interest.

<https://www.nidirect.gov.uk/services/>

[search-proni-historical-maps-viewer](#)

Do you have connections on your family tree to Bendigo?

The Bendigo Regional Archives Centre (BRAC) is a grassroots heritage archives centre where visitors can view and use historic original records in person. BRAC also has digitised collections available online, e.g. Petitions 1870-1899 (you can search the current list of 14,240 names – more to be added in 2017). BRAC has also developed guides to help you find what you are looking for, e.g. Guide 3: Information about Bendigo & District Rate records and how to use them.

http://www.brac.vic.gov.au/Guides_FAQs/BRAC_Guides

New South Wales Passenger Lists

FindMyPast has added 8.5 million New South Wales Passenger Lists to its collections. They cover both assisted (1828 – 1896) and unassisted (1826 – 1900) passengers. Remember that back then NSW included parts of present-day South Australia, Victoria and Queensland.

<http://search.findmypast.com.au/search-world-Records/new-south-wales-passenger-lists>

How to locate an archive

The National Archives (UK) Discovery website is a really useful way to locate archives in your area of interest. The Find an Archive page enables you to find an archive in the UK and other countries. For example, there are 24 results listed for New Zealand,

including libraries, museums and heritage collections.

<http://discovery.nationalarchives.gov.uk/find-an-archive>

Victoria's hidden history revealed through newly opened archives at PROV

January is the month for the annual opening of officially closed records at PROV. Records include the capital cases that made headlines in 1941, and Ballarat divorce case files for the same year. For the full list of what has become available this year, go to:

<http://prov.vic.gov.au/publications/blog>

Scottish records

All resources on Scotlands Places are now available free of charge, go to:

<http://www.scotlandsplaces.gov.uk/>

Show and tell

Do you have a special item of family memorabilia that you would like to share with members?

Perhaps you have a family bible, military medal, or interesting photo. Or have you made a special discovery in your research, or broken down a brick wall?

We are looking for items and stories for the 'show and tell' segment at our general meetings. If you have something to share, please let a committee member know.

BROADBAND FOR SENIORS

We recently had a visit from Janita Lyons from Broadband for Seniors. We have been a Broadband for Seniors Kiosk since 2010. They have supplied us with three computers as well as subsidising our internet costs. In return we provide free computer lessons for senior folk.

Janita made us aware of the many computer lessons that are on the internet and available through BBFS. They are in an easy to understand format. We also have booklets, provided by BBFS, on different areas of computer use. This is all done to encourage seniors to use the internet and not be afraid of making mistakes on it.

If you would like some tutoring in excel, word, publisher, photos, iCloud, drop box, Family Tree Maker, or any other area of computing, please contact us and we will help you.

Jacinta told us that although Broadband for Seniors is ceasing in June, it will be replaced by another free program that will continue to supply equipment and assistance to older Australians to ensure they are able to make maximum use of computers.

EARLY ANGLESEA FAMILIES - THE MAWSONS



Sam & Emma Mawson

The family of Sam and Emma Mawson was well known, highly respected and a vital part of Anglesea.

SAM MAWSON was President of the Anglesea Recreation and Sports Club in 1914. Mrs. Emma Mawson had the honour of opening

the new Clubhouse in January of that same year. They also donated the Regatta Cup in 1922.

The Mawson's enthusiastically supported the New Year's Day Regatta which was the social event of early Anglesea - sometimes their house party included up to 23 guests.

When the family first travelled to Anglesea in their horse drawn coach, Sam Mawson sat up front with the footman, with Mrs. Mawson seated in the back with the four children and maid. In those days the bumpy journey from Geelong including rest stops would have taken at least three hours .



Mawson's arriving in Anglesea in their buggy



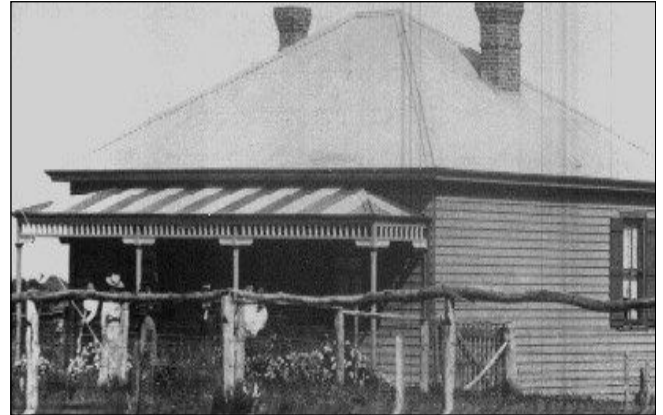
The Mawson's were one of the early families to purchase a car

. Sam Mawson followed in his father's footsteps and became a dentist - a very successful one too. His surgery was at 189 Moorabool Street, between Ryrie Street and Myers Street. The old attractive double storey building still stands in Moorabool Street.

Their holiday home 'Cambridge' occupied a very large block, at the south east of the corner of today's Noble and Murray Streets. It was built in 1902 of timber, and was of double front design.



Sam's surgery in Moorabool St.



Cambridge' House

'Cambridge House' in Anglesea was destroyed by the 1947 bushfire. The Mawson Estate was subdivided into 84 allotments and auctioned during 1948.

A separate building at the rear of the property contained a bunk room, billiard room, and stable. This was named *Inverloch* as it had been constructed from timber salvaged from the local shipwreck of that year. A flagpole said to have come from that particular ship was at the front of the cottage, and often flew a blue flag with the words *Cambridge House* emblazoned on it. Early photos show that this upright shaft and their house could easily be seen from the river mouth. No tall trees then!

The family home in Geelong



Mawson's Geelong home

Saltire' can still be seen on the western side of La Trobe Terrace, just up the hill from Aberdeen Street. You would have passed this many times - it's that lovely two storey Victorian Eclectic residence (now used by a solicitor) next to the medical centre - which occupies part of the original side garden. Sam chose his real estate well.

Photography also interested Sam . Many people do not realise that the photo of early Anglesea on their lounge room wall was probably taken by the clicking extractor of teeth. Some of his shots taken at the river fork area, or at the original bridge were superb.



*The Mawson family on the new Anglesea bridge
Photographer : Sam Mawson*



The Mawson family on holiday.

Photographer:

Sam Mawson

During W.W.1. the Mawson family arranged many patriotic concerts in Geelong to raise funds for the Australian Forces overseas. Grief came to older daughter Ivy, when her fiancée Lyal Young was killed in action in France. Lyal's name is on the Honour board at Anglesea's Sport & Recreation shed. Also named on that honour board is Sam & Emma's son, Frederick Richard Mawson, who enlisted during WW1.

Frederick was a 19 year old student when he enlisted in 1917. He embarked for overseas on 31 August 1918 on the Barambah . He served in France before returning in August 1919.



Guests at Cambridge House

Emma Mawson raised funds and organised an Avenue of Honour that was planted down what is now Murch Crescent and then up Noble Street. This was the then track to Aireys Inlet. These trees were cut down to make way for lines when electricity came to Anglesea,

However two of the trees regrew from the remaining stumps. One tree is in front of 44 Noble Street and the other one is in Noble Street near the River Reserve Road corner.



Sam Mawson and grandchild

MAWSON FAMILY TREE

1843-1916 Frederick Sunderland MAWSON m1867 to 1847 -1906 Jane Allen TAPPER Fred was a dentist in Geelong. They had four children, 1868-1881 Elizabeth Sarah MAWSON, 1871 Mary Ann Isabell MAWSON m 1894 John Stead HUNT, 1873 Ann Elizabeth MAWSON.

The second child of of Fred and Jane MAWSON was 1870 -1933 **Samuel Robert Joseph MAWSON** m.1891 to 1868-1938 Emma HUNT.

Sam followed his father and became a dentist in Geelong. He built a holiday house in Anglesea and brought his children here regularly. His children were

1894-1979 **Ivy** Irene Lilian MAWSON married 1923 Major David DOYLE Issue - Robert, Geoffrey & Peter. Ivy had been engaged to CL Young who was KIA Gallipoli 1916.

1898- 1924 **Frederick** Richard MAWSON returned from WW1 but died aged 26 from TB.

1900-1966 **Reta** Jean MAWSON m1926 to 1900-1964 Donald Linton FERNALD, 3 children - Erica, Jean & Rodney.

1906-1967 **Guy** Ronald Chester MAWSON m 1936 to 1914-1999 Dulcie Beryl KILPATRICK. 1 child - Sandra (m. JAMES)

REF: From the Lindsay Braden collection both published and unpublished

Help needed to solve a mystery

Susan Clarke

A postcard has been donated to Anglesea and District Historical Society which poses the challenge: who are the people mentioned on the card, and how did it make its way to Anglesea?

The front of the postcard sends 'Loving Birthday Greetings', has a picture of roses, a quote and a verse. The postcard is dated 8/12/1911, and addressed to Miss Elsie Nicholas, Trevithal, Poowong. The sender is 'your loving Aunt Emily Webber'.



I started by searching for the name NICHOLAS at Trevithal, Poowong. The first discoveries were death notices in the Weekly Times for John Nicholas (1908) and in the Argus for Edgar Nicholas (1953). John Nicholas had died at his residence "Trevithal" at the age of 85. The death notice for Edgar, of "Trevithal", indicated that he was the son of John and Jane, and listed his 11 siblings.

There was also a really interesting notice in the Argus for 17 October 1903:

NICHOLAS MATTHEWS [Golden Wedding]

On 15th October 1853 (by licence) at Christ Church of England, Geelong by the Rev George Pollard, John Nicholas late of Adelaide and Cornwall, England to Jane eldest daughter of the late James Matthews of Geelong, and Cornwall, England. Present address: "Trevithal" Poowong, formerly of Little River near Geelong. Geelong and home papers please copy.

So the family from Trevithal had been married in Geelong, and lived at Little River before moving to Poowong.

In turning my attention to the sender of the postcard, I discovered that Elsie was born in 1886, the daughter of Frederick John Nicholas and Annie Aiset NEWLANDS. I located the births of Elsie's parents: Frederick (eldest son of John and Jane) at Little River in 1855, and Annie at Birregurra in 1867. However, neither of them had a sister Emily who would be Elsie's Aunt Emily. I did establish that Elsie's grandmother, Jane, had a sister Emily born in Ashby (Geelong West) in 1856. And Emily had married John WEBBER in 1878, so this seems to be the connection. Elsie herself married George Robert BETTS in 1912, and died in 1973 at Birregurra.

Are any of these names on your family tree or do you recognise any of them. We would love to solve the mystery!!

FAMILY FILE– help – wanted

The Family File enterers are doing a great job, developing an index of the early families associated with Anglesea. It is a huge job but they are slowly but surely working their way through all of the recorded information we have on each of these families. Enterers work on a Thursday afternoon. It is not essential to be at every enterers session and some people work from home. If you have basic computer skills and would like to help please contact Peter Matthews who is coordinating the project and has developed a set of directions for enterers to follow. If you are able to help please contact a committee member.