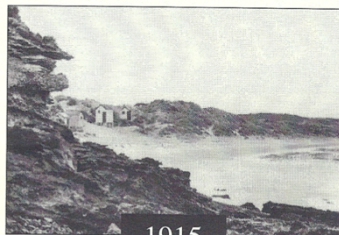


**Nibbles:** In this issue of Nibbles we're introducing a few new things to help entertain and inform you. Our blast from the past is an article on Bathing Boxes from 16 years ago by our then resident historian Lindsay Braden. But first of all the quiz ...

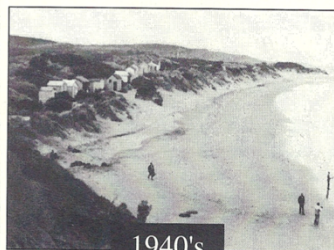
**Quiz:** In future we plan to keep you on your toes with a short quiz. How well do you know the history of our town? The answers will be towards the end of each issue (no peeking).

- Q.1. In what year did William Buckley first drop in on what we now call Anglesea?
- Q.2. What was the name of the Captain of the SS Inverlochy when it was shipwrecked on Ingoldsby Reef in 1902?
- Q.3. Let's see what you remember from our first edition of Nibbles. Who coined the Parker Penny?
- Q.4. On what date was the Great Ocean Road officially opened?
- Q.5. What significant Anglesea tourist attraction was recently added to the Victorian Heritage Register?

**Main Beach Bathing Boxes:** Bathing boxes were an important part of the Anglesea beach scene from 1900 to 1960. By 1915 the Department of Lands and Survey decided to raise some income from these popular shelters. From then, a yearly licence fee of seven shillings and sixpence (75¢) was payable to the Receiver of Income. These timber sheds nestled high on the dunes away from the incoming tide. Although Point Roadknight protects the main beach, a problem cool south-westerly breeze was easily countered by sunbathing behind these popular shelters. In 1927 a journalist from Melbourne noted that Anglesea was one of the prettiest seaside resorts around Melbourne, and that the hotel was providing improved main beach bathing boxes for its guests. By the 1960s Anglesea was no longer a remote seaside venue. The sand dunes were showing bad signs of wear and tear from large beach-going crowds. During 1963 owners were given a period of three months to remove their boxes, and the dunes were later fenced off and marram grass planted extensive – so ended an era. (Lindsay Braden. Coastal Current November 2004)



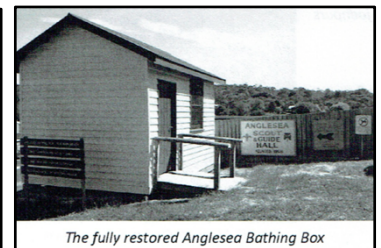
1915



1940's



Bathing Box at the Art House



The fully restored Anglesea Bathing Box

**Footnote:** During 2017 we learned that the last of the bathing boxes, which had resided adjacent to the Art House, was to be demolished. With significant support from the Shire Council and lots of hard work from a number of our members, the box was moved to the History House site and restored. When the COVID-19 restrictions are eased, why not visit us and get a glimpse of what it might have been like during those halcyon beach days of the early to mid 1900s.

**From Family History:** A century or more ago, when people died, their bodies lay on their beds in their homes until family and friends were able to visit and pay respect. There were no chemicals for embalming, and no perfumed sprays! So, flowers were scattered on the bed and over the body to mask the odour. Over time, the scattering of flowers evolved into a lovely symbol. Flowers are associated with life, vitality, and beauty. Then as they wilt and die, flowers represent the fragility of life and the passage from life to death. Today, scattering flowers at a funeral is a common tradition.

**Farewell:** We are sad to say farewell to Kevin and Elwyn Pollard as they have moved to Port Macquarie. We are especially grateful to Kevin for his work on the Bathing Box in 2018. We wish them all the best in their new retirement home.

**Our Museum Collection:** In each edition of Nibbles we are going to feature an item of interest from our collection of historic memorabilia and artifacts. Susan Clarke, our museum curator will tell you some of the interesting and informative things about each item. So here's this month's item ...

### Do you know what this object is?

It travelled a long way over both time and distance to wash up in Anglesea. This scribe box was found by John Taylor, an early member of A&DHS, when he was diving near the mouth of the Anglesea River. John donated it to the society in the 1980s.

This mid-Eastern (Persian) brass travelling scribe box is a 19<sup>th</sup> century artefact. It has a pen or quill case with a crown finial on the lid. The adjoining inkwell has a shell on the lid. There is engraved decoration over the whole object, which is 23cms long. The scribe box is on display in the bathing box at History House. Why not take a look when next time you visit.



**After the "Lockdown:"** When things get back to a semblance of normality, the museum will be re-opened and we will reschedule our regular trips to places of historical significance. However, we are also in the process of planning a series of talks on topics relating to the history of Anglesea (the early fishing and farming industries, the development of tourism, coastal shipwrecks, etc.). We may extend some of these to include on-line presentations as well, however all of this is still in the melting pot. We will keep you informed of developments.

**Here's an opportunity:** If you have any stories or photos relating to the history of Anglesea that you think would be suitable to share with our readers, email them to [anghisthouse@gmail.com](mailto:anghisthouse@gmail.com) and we'll consider them for publication in a future edition of "Nibbles" or our "Coastal Current" newsletter. You might also like to suggest "topics" that you think could be suitable and of general interest, and we'll do the research. The frequency with which we publish "Nibbles" will depend on what stories we have to write about that we think will be of interest to you. Email us your thoughts and ideas.

**This year's Annual General Meeting:** As a result of the current COVID-19 isolation policies it will **NOT** be possible to hold this year's Annual General Meeting of the Anglesea & District Historical Society on Sunday 4<sup>th</sup> October 2020 in the normal "face-to-face" manner as planned. We considered an on-line meeting but many of our members either don't have access to the internet or don't wish to be involved in this way, and even so, the reliability of an on-line meeting cannot be guaranteed because of the occasional slow data transfer rates resulting from the current high volume of on-line traffic. So we are sending out our AGM reports with this issue of "Nibbles," The current committee will continue until such time as we are able to call a general meeting. If you are interested in nominating for a committee position, feel free to ring the current Secretary on 0412 619 219 to discuss the process.

**Answers to the Quiz:** Q.1 1804. Q.2 Captain E. R. Kendrick. Q.3 Richard Parker Q.4 26<sup>th</sup> November 1932. Q.5 Loveridge Lookout. Put your hand up if you got five out of five. Well done if you did.

**Did you know?** Further to the quiz question about the Inverloch, interesting to note that the cargo of the Inverloch was valued at £40,000. In 1902 terms that's a very large sum. If you look at the cargo inventory, it's a wonder that the ship even floated. However after the shipwreck what was left sold for just £160. Captain Kendrick was found guilty at a subsequent enquiry and his master's licence suspended for a year. I guess somebody had to carry the can. If you want to learn more about the Inverloch, when you're allowed to visit the museum again you can access one of our computer tablets that contain explanatory videos about many aspects of our local history as well as items on display in the museum. We have also scanned the pages of the Inverloch log and these appear in our database. We are also steadily transcribing these pages into searchable text and using the latitude and longitude entries to plot the passage of the ship on a world map.

**The month of October:** Here's a list of some of the things that happened during the month of October in Australia in years gone by.

Oct 7<sup>th</sup> 1830 "The Black Line," a six-week military-like offensive was launched by Lieutenant-Governor Arthur using moving cordons of settlers to drive Aboriginal Tasmanians from the colony's populated districts to the Tasman Peninsula. Read more on - <https://www.nma.gov.au/defining-moments/resources/the-black-line>.

Oct 17<sup>th</sup> 1949 Construction of the "Snowy Mountains Hydro-Electric Scheme" officially began.

Oct 20<sup>th</sup> 1973 Queen Elizabeth II officially opened the Sydney Opera House.

**Historical Jokes:** 1. Julius Caesar walks into a bar, holds up two fingers and says "Five beers please."  
2. Asked by his barber how he wanted his hair cut, Socrates replied: "In silence".