

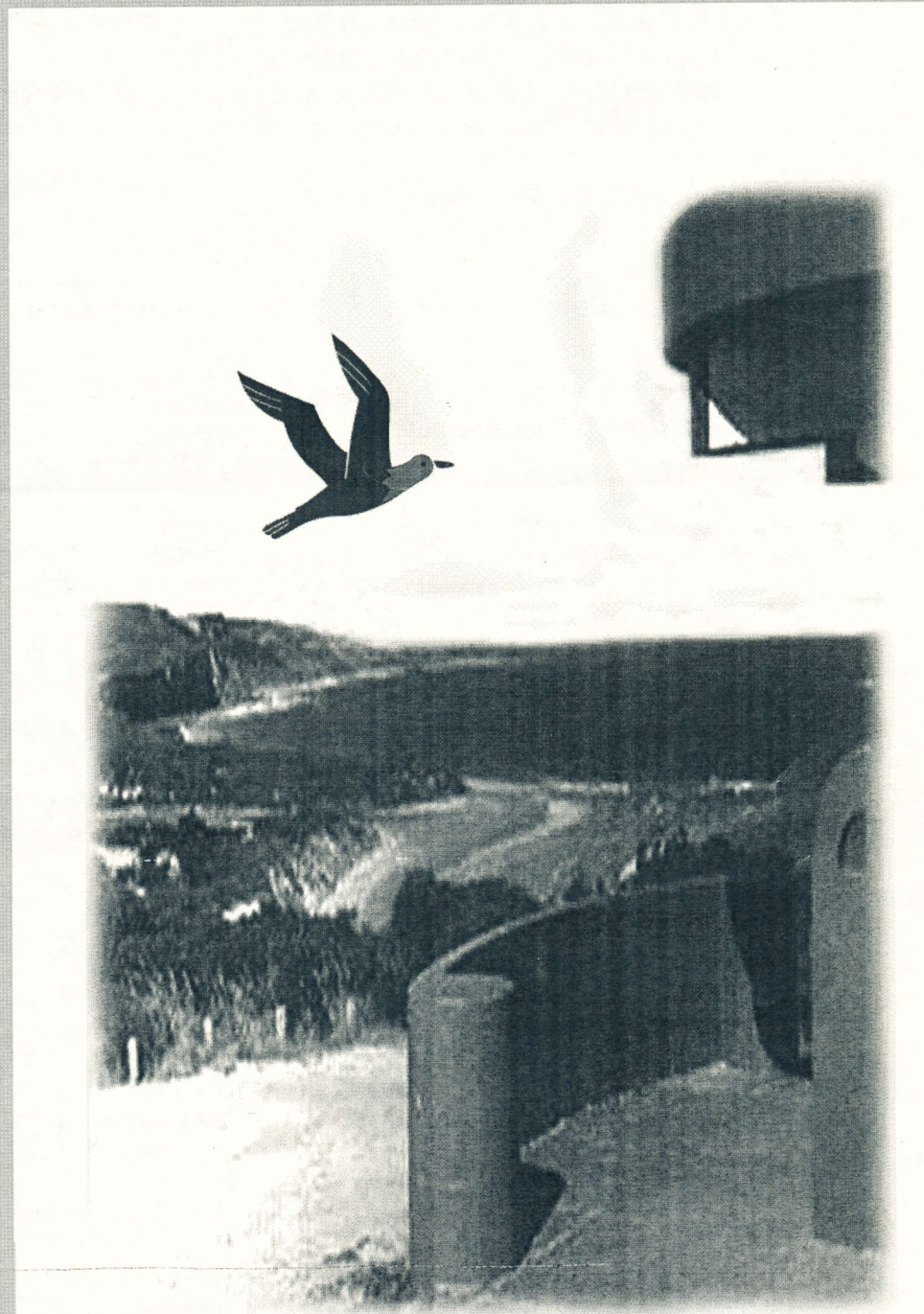
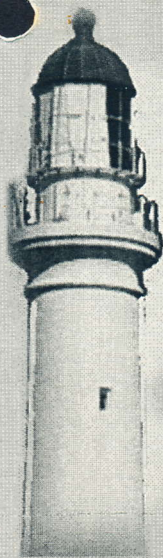
# Coastal Current

*Seaside tidings from  
The Anglesea & District Historical Society Inc.  
Incorporation No. A0009246F*

No. 92

Newsletter Winter  
August 2011

The Anglesea & District Society  
is a not for profit  
organisation staffed  
by volunteer  
members of the community,  
whose aim is to research  
and preserve history  
of the local area.





**PLEASE NOTE** - all membership fees are due for renewal. Coastal Current will be sent only to financial members.  
Membership fees apply from 1 October to 30 September.

**Meetings**

Meetings are held at the Museum  
5a McMillan Street, Anglesea  
Entrance 4 of the McMillan Street  
Community Precinct

The Historical Society meets on the first  
Sunday of each month except January.  
Meetings start at 2.00pm followed by  
a speaker or the topic for the month.

Visitors are welcome to attend.

**Museum**

Our Museum at 5a McMillan Street  
Anglesea, is open during the Xmas and  
Easter holidays on Sundays  
2-4pm or by appointment -  
Phone (03) 5263 1249

Meeting July - Member *Show and Tell*

Meeting August - Lynette Willey  
author of "*The Waterholes*"

Meeting September - Michael Menzies,  
Speaking on *Local Railways*

**Historical Society Committee**

**President :**

Harry Davies  
Phone (03) 5263 1726  
Email - bevharry@netspace.net.au

**Secretary / Treasurer :**

Bruce Bodman  
Phone (03) 5263 1249  
Email - bodman@bigpond.com

**Vice President:**

Lyle McConachy  
Phone (03) 5267 2585  
Email - lylemcc2009@hotmail.com

**Researcher**

Lindsay Braden  
(03) 5263 3311

**Committee Members:**

Beryl Parsons  
Phone (03) 5263 1164  
Email - elms31@bigpond.com

Thelma Western  
Phone (03) 5263 2865  
Email - tdwestern@yahoo.com.au

Jan Morris  
Phone (03) 5263 3085  
Email - davejanmorris@bigpond.com

Norma Morrison  
Email-normamor@tpg.com.au  
(03) 5261 6239

**Photographs**

Anglesea & District Historical Society has an  
extensive collection of photographs.  
These may be ordered through Jan Morris Phone  
(03) 5263 3085  
Email - davejanmorris@bigpond.com

Prices	On high quality Photo paper	On 100 gsm fine finish paper
A4 8.26X11.69	\$15	\$8
A5 5.82X8.26	\$8	\$4
A6 4.13X5.82	\$4	\$2
A3	maybe available by special arrangement. 11.69X16.53	

A discount of 10% applies to financial  
members

It must be noted that photo quality varies from  
excellent to poor. Our final product is dependent on  
the quality of the original photo.

Photos can be viewed at the museum when open,  
or by appointment.

**Anglesea & District Historical Society Inc.**  
**Box 98 Anglesea 3230 Victoria Australia.**  
**Incorporation No. A0009246F**



# Snippets from The Secretary

## Snippets from The Secretary

The Lions Club of Anglesea's submission for Anglesea to be included in the annual tour of the Emirates Melbourne Cup has been successful.

The Emirates Melbourne Cup will be in Anglesea on Sunday 23rd October. This is a wonderful occasion for all community groups to get together and participate and celebrate the occasion. Our Society will be involved and mount (excuse the pun) a display with a racing theme. If any member has racing memorabilia or ideas we could use on the day, the committee would appreciate a call from you. Our most eagerly awaited meeting of the year - the Annual General Meeting - is scheduled for Sunday 2nd October. We are in need of members to go on to the committee and bring fresh ideas, but most importantly, ensure the continued presence of the Society in the district. Agendas and nomination forms will come to you in a separate mailing.

The speaker arranged for the AGM - is Nat Eichler, a founding of the Liberator Bomber restoration project located at Werribee.

Recent enquiries at the Information Booth and Surf Coast Shire have shed no light on the disappearance of the William Buckley and Great Ocean Road plaques that were once located at the Centre. The Society will investigate the matter further and advise you in due course.

## A Short Story of THE COT

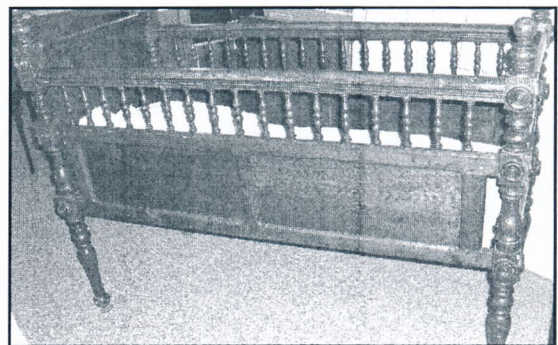
By *Maie Zorica*

After migrating to Australia from Somersetshire, UK, my great grandfather Mark Stock became a builder in Charles Street, Newtown, Geelong for many years. In 1881 when his son, John and his wife Mary Anne (nee Hawker), were expecting their second child Mark John handmade the cot from pine, which explains why it is very light to pick up although looking very heavy. All the bars and the top and base were hand turned on their lathe in Charles Street.

So many babies have used it, and on the top surface are many teeth marks (mostly made by myself many years ago).

John Stock's second child, Charles Oakhill, was b. 3.6.1881. They went on to have seven children. A longer article will be ready for the next issue.

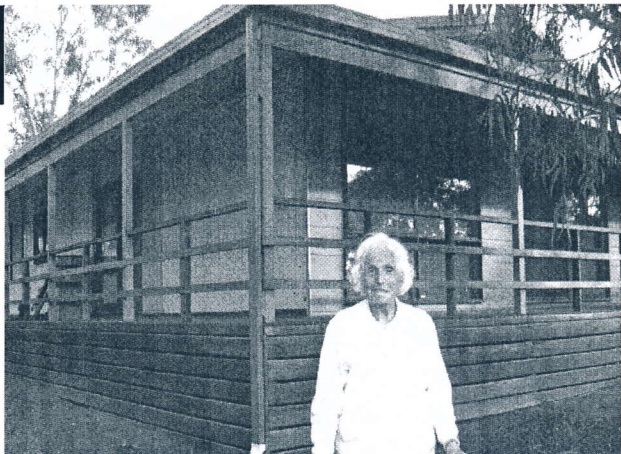
I have presented this cot for display purposes to the Anglesea & District Historical Society on an indefinite loan.





## THE RECYCLED NISSAN HUTS

In the late 1950's the late Les and Phemie Hatton bought a block of land in Noble Street. Les, a Presbyterian minister in Geelong, had been involved with the *Good Neighbour Council*, assisting migrants to settle into Geelong. The migrants had temporary accommodation in Nissan Huts. As they found their own housing the North Geelong migrant centre was no longer needed and the buildings were sold off. Les bought three Nissan Huts and had them transported to their block of land at Anglesea.



*The late Phemie Hatton outside Noble Street, the house her husband Les built using Nissan huts as a basis*

"You don't know anything about building!" challenged Phemie. "I can find out from books and friends," was Les' reply. And that is exactly what he did. He employed a plumber and an electrician, but he and his friends did the rest. The result was a comfortable holiday house with a kitchen, dining room, lounge, bathroom and three bedrooms. It had big windows at the front where they could look down on to the river. The holiday house brought the family many years of happy vacations. You'd never guess it started out as three Nissan huts. *Phemie was a long time member of ADHS.*

*The Argus Thursday 30 March 1911*

### CRUDE OIL FOUND AT ANGLESEA

Geelong Wednesday – Boring has been carried out on Mr. G C Noble's estate situated between Black Rock and Anglesea, and some fine samples of crude oil have been obtained. As a result, Mr James B Turner of Brunswick, is applying to the warden for a mining lease of 640 acres in which to continue the work. The applicant proposes to spend £300 on boring operations within three months, and 1,200 in sinking in six months. The whole of the Otway Forest is believed to be coke-bearing and has been tested with in some quarters success. The same country has been tested for pigment clays, but with what success has not transpired.

*The Argus August Tuesday 9th May 1911*

### OIL MINING LEASE AT ANGLESEA

Geelong, Monday – Mr. Thomas Birbeck applied to the land officer for a mining lease of 550 acres at Anglesea, for the recovery of oils and pigment clays. District residents offered strong objections to any interference whatever with the camping reserve and river, which are included in the application. They had no objection to a lease being granted east from the camping reserve to Point Addis. Mr Malcolm Taylor decided to recommend that the application be refused and advised the applicant to consider the smaller territory to which the residents offered no objection. There are a number of applications for lease of ground, and several areas have been pegged out. One Geelong syndicate which has been boring in the district has already obtained oil.

*The Argus 31 August 1911*

### OIL BORES UNSUCCESSFUL IN ANGLESEA

After inspecting the Anglesea district, where bores have been put down in search of mineral oil, the director of geology Mr. Dunn, says that up to the present he considers that the operations have not met with success. At the surface there are no evidences of the existence of mineral oil, but great stress is laid upon the fact that gas at two of the bores ejected black mud churned up in boring. This in itself Mr Dunn says, is no evidence that such oil exists. He adds that it is impossible to say what may be found at a greater depth.

*Editor's note: With the current price of petrol perhaps we should re-examine these discoveries.*



## ANGLESEA LOOKOUT RESERVE

*The following plaques have been placed at the Lookout Reserve. as part of the restoration work at Loveridge Lookout. Combined with the wonderful views from this lookout, we now have a great point of interest where our Anglesea history is display.*  
*The mosaic of the Inverlochly is also on display here.*

### LOVERIDGE LOOKOUT

Loveridge Lookout was built in 1938 as a memorial to James Loveridge by his widow Bertha Loveridge. The lookout is located near the former Loveridge owned property 'Anglecrest'.

This site was selected by Bertha Loveridge as it was James Loveridge's favorite viewing location of Bass Strait.

Loveridge Lookout was designed by the prominent Ballarat architect H.L. Coburn in the interwar Modern Functional style and is the only surviving reinforced concrete structure of this construction type in Anglesea.

The original 'Anglecrest' was burnt down in the Ash Wednesday bushfires in February 1983.

### FLORA & FAUNA

The Anglesea Lookout Reserve is nationally important in maintaining indigenous flora and fauna biodiversity.

This small remnant of coastal heathland is extremely rich in plant species. Windswept low growing grasses, sedges, herbs and small shrubs are entwined, forming a blanket cover over the landscape. Some beautiful orchids are found beside the tracks and in the more open areas.

As season follows season, varying colours emerge as the different species come into flower.

The naturally sculptured tapestry of heathland provides habitat and food sources for numerous birds, small mammals, insects, reptiles and other animals that all have a special relationship with the heathland vegetation.

More than 100 orchids species are found in the Anglesea heathlands representing half of Victoria's orchid flora.

For more information contact ANGAIR, the Anglesea Aireys Inlet Society for the Protection of Flora, [www.angairg.au](http://www.angairg.au)

### GROUNDING OF THE 'HEREFORD'

The 'Hereford' an iron clipper of 1524 tons grounded on a reef just off Point Addis on 12 January 1881 close to shore. She went stern foremost onto a reef under water, and became firmly wedged. The ship was abandoned and the passengers numbering 12 cabin and 37 steerage were landed nearby by the ships life-boats. Two steamers later helped recover cargo. It was not until February that the lightened ship was towed through the Heads into Hobson's Bay for assessment.

### WRECK OF THE 'INVERLOCHY'

On 18 December 1902 the 'Inverlochly', a three masted 1471 ton barque, foundered on Ingoldsby Reef, about a kilometer east of the Anglesea River mouth.

The 'Inverlochly' was sailing from Liverpool to Port Phillip, Launceston and Hobart with a general cargo and a crew of 30 and one passenger. No lives were lost.

Salvage operations retrieved some of the cargo from the 'Inverlochly'

Including a bicycle belonging to the passenger. Strong southeasterly winds in early February 1903 caused the vessel to break up, and large quantities of the cargo washed up onto the beaches.

The ship's logbook and lifebelt is on display in the museum of the Anglesea & District Historical Society.

### WAR SERVICE 1939 - 1945

During the Second World War Loveridge lookout was an observation post for the Volunteer Air Observers Corps. From 1942 until 1945 the post was continuously manned by a group of 56 local volunteers and played a critical role in the ground warning strategy of the Royal Australian Air Force. Given the need for constant surveillance, a small room was built on the western or car park side of the Lookout. This small flat roofed shelter was lit by a kerosene lamp and heated by a small pot-belly stove. As a security measure a temporary barbed wire fence encircled the Lookout.

By 1945 Anglesea had recorded 2,000 aircraft movement reports. The type of aircraft seen included: Ansons, Oxfords, Kittyhawks, B25 Mitchell bombers, Spitfires, Beauforts, Liberator Bombers and Mustangs.

These aircraft were either on submarine patrol or on navigation training exercises.



Cont.....GEOLOGY

To the north east across the Anglesea River, the tall cliffs expose sedimentary rock of the Tertiary Age (less than 65 million years old). The sediments consist of a series of sandstones, mudstones and shale's, intermixed with coal and basalt. These sediments were laid down under fresh water and estuarine conditions as the great southern land of Gondwana broke up and the continents and islands drifted north from Antarctica.

The shape of the coastline is formed by resistant units (sandstones and basalts) exposed in some places and softer units (mudstones and shale's with Minor marls) exposed in others. The sea erodes the softer units first. The presence of old fault lines also affects the coastline shape, and can be a major contributor to indents in the coast line especially where all the rocks exposed are resistant. The discharge of sediments from rivers into the ocean also plays a role in the formation of the coastline.

**LANDSLIP** South east of Loveridge Lookout is Roadknight Bay (once called Princess Mary Bay). To the south west is a small red cliff, trending up towards the Great Ocean Road. This marks the edge of the major 1903 landslip which extends across a low valley to within metres of Loveridge Lookout. When the hillside collapsed early in the morning the tremendous roar woke people throughout the district. At the time of the landslip, a local identity, Jonas Hollingsworth, lived in a bark hut at Point Roadknight. Rumor has it that he had quietly rowed out to the wreck of the 'Inverloch' and 'borrowed' a case of whisky, and awoken by the roar of the landslip which covered his newly acquired whisky!

**REFERENCE BOOKS WORTH BROWSING IN OUR LIBRARY FOR PRE 1900**

**THE CYCLOPEDIA OF VICTORIA -**

An Historical and Commercial Review. Volumes 1 & 2 produced 1905 & 1907 This book was donated to ADHS by the late Gordon Dixson.

The Cyclopedias that were published for most states of Australia around the beginning of the 20th Century are a vast resource of historical and biographical information on Victoria - the people, towns, industries, professional, commercial and social institutions and much more.

They include thousands of illustrations, the larger number of these being portraits of those whose biographies are included. These are not just the rich and famous, but include a high percentage of the ordinary citizens in each community.

**VICTORIA & IT'S METROPOLIS 1888**

Authors Alexander Sutherland, Robert Lewis John Ellery

"Victoria and Its Metropolis" is a large 2 volume history of Victoria, written in 1888 by Alexander Sutherland. Beautifully presented with many etchings and drawings throughout, this book contains a huge amount of information on the people of the colony and its early history.

The first volume covers information from the discovery of Australia, through the exploration of Victoria and the first settlers to the pioneers. It then continues on to immigration, the era of gold, the development of government, agriculture, music and art, literature and the metropolis of Melbourne.

A large portion of the second volume examines the colony by district, which covers many districts throughout the colony as well as the metropolitan area. Hundreds of biographical entries are scattered throughout and a comprehensive biographical index is included at the end. .



## ANGLESEA & DISTRICT HISTORICAL SOCIETY INC.

The **Anglesea and District Historical Society** meets monthly on the first Sunday of the month at the museum. They hold a meeting followed by a speaker and afternoon tea.

A quarterly Newsletter known as *Coastal Current* is delivered to all members. This is combined with the Family History Newsletter known as *Inverlochy Log*.

The Museum is open by appointment.

Membership includes insurance for members not over 90 years of age.

**Surf Coast Family History Group** offers help and assistance with family research if needed. The group has a wide range of records and has internet connection for online research.

A group meeting is held on the Second Thursday of each month at 10.00am.

Research facilities are open on Tuesday mornings and Saturday mornings.

### MEMBERSHIP APPLICATION

NAME.....

I accept the rules and regulation of the Anglesea & District Historical Society, including those regarding borrowing of books and materials.

I will assist in whatever way I can to preserve historical information, photos, artefacts and documents pertaining to Anglesea and district.

ADDRESS .....

POSTAL ADDRESS (if different from above) .....

PHONE..... EMAIL .....

- Enclosed is \$15 per person for 1 year's membership fee.
- Enclosed is an additional \$15 per family for 1 year's membership fee of the **Surf Coast Family History Group** (optional).

Membership is from 1<sup>st</sup> ~~October~~ *September*. When first joining, fees are pro-rater of that year.