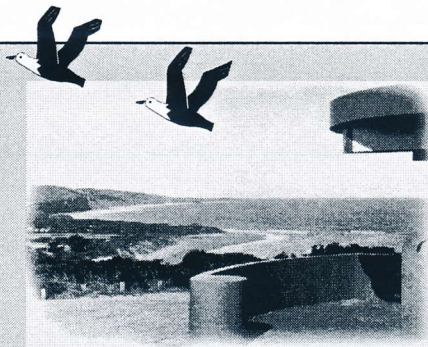


Coastal Current

seaside tidings from ...
**The Anglesea & District
 Historical Society Inc .**



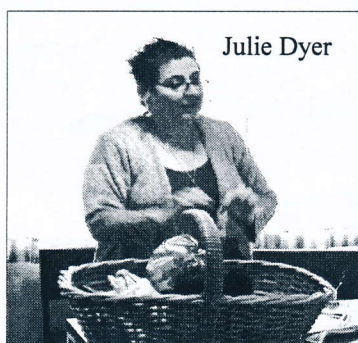
From our President

In August we participated in the Festival of Words at Aireys Inlet, displaying the story of William Buckley and his Family Tree compiled by the Family History Group.

At this, two separate people approached us advising their grandfathers had travelled to Australia on the same ship as William Buckley. We are now trying to locate one of those people, as we did not get their name, but we know the other one.

We have again had very good speakers. July was a Show & Tell, with Joan Forster (always a teacher!) giving us a very

interesting talk on the flora of the Surf Coast .



Julie Dyer

In August Julie Dyer from the Surf Coast Shire spoke to us about her recent trip around Europe . Thanks very much to all those people. We do appreciate the time you give to talk to us. *Norma Morrison*

ANGLESEA'S PERMANENT POPULATION

1895 (7) 1921 (49) 1947 (211) 1961 (544)
 1971 (1048) 1977(1991) 2001 (2290) 2006 (2300)
 Aireys Inlet area 2006 (1148)

NOTICE OF GENERAL MEETING

Notice is hereby given that the
 ANNUAL GENERAL MEETING of the
ANGLESEA & DISTRICT HISTORICAL SOCIETY INC.
 will be held at our Museum 5a McMillan street Anglesea,
 on **Sunday 5th October at 2pm**

Completed, signed, nomination forms to Secretary by Sunday 28th Sept. 2008.

**Newsletter No 82
 September 2008**

**Anglesea & District
 Historical Society Inc.
 Box 98 Anglesea 3230
 Victoria. Australia.
 Incorporation No.
 A0009246F**

**President :
 Norma Morrison
 (03) 5261 6239**

**Secretary :
 Bruce Bodman
 (03) 5263 1249**

**Treasurer :
 Thelma Western
 (03) 5263 2865**

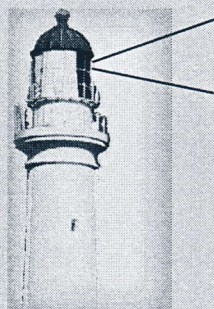
**Researcher
 Lindsay Braden
 (03) 5263 3311**

**Meetings
 The Historical Society meets on
 the first Sunday of each month
 unless otherwise notified**

**Museum
 Our Museum at 5a McMillan
 Street Anglesea, will be open
 during the Xmas and Easter
 holidays on Sundays 2-4pm or
 by appointment.**

**Web site -
[http://home.vicnet.net.au/
 ~angen/](http://home.vicnet.net.au/~angen/)**

e-mail - normamor@tpg.com.au



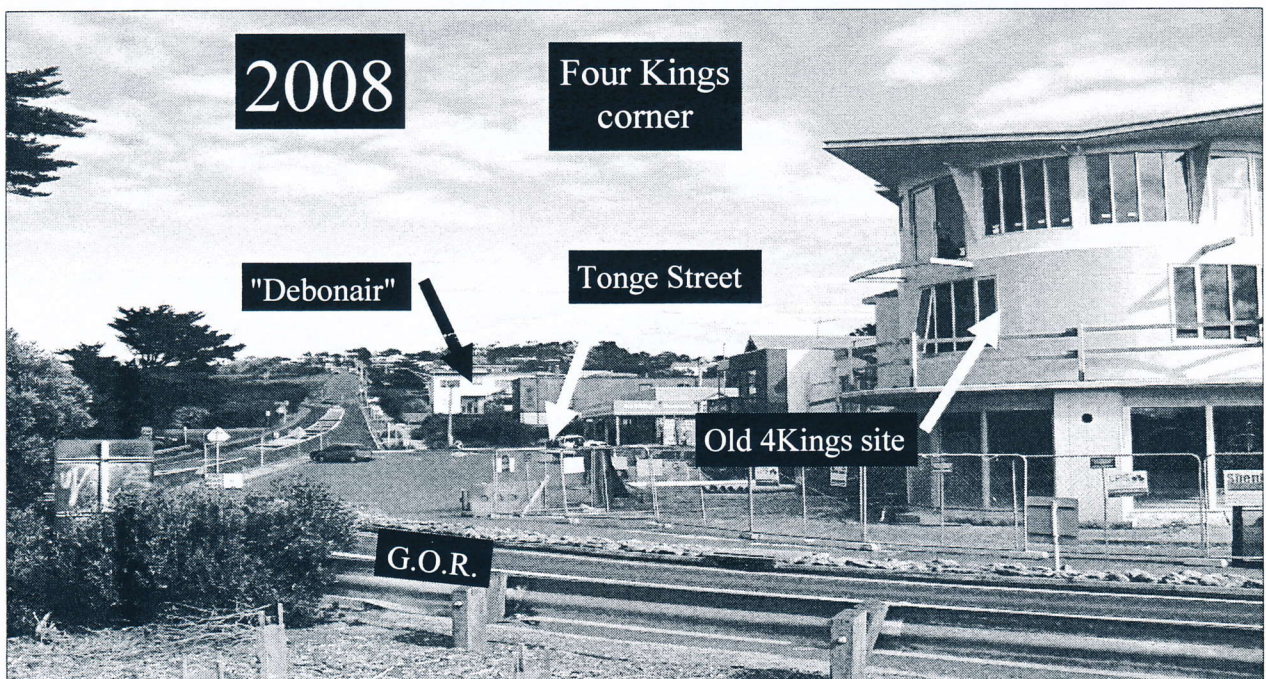
The Four Kings corner



Beckinghams added the tennis court after they bought Debonair from the Tonges in 1929. Debonair was built by local builder Harrison during 1916.

No. 1 Tonge Street erected by the Mckenzie's on land purchased privately 1920 from Harvey Sichlau (relation) two years after the 1918 Bon Air No 1 sale. House built 1921.

No. 3 Tonge Street erected by Walter Harrison after buying land at the Bon Air No1 sale 26/12/1918. Harrison (who was a local builder) erected this soon after purchasing..



Wartime memories

Identify that Aircraft overhead!

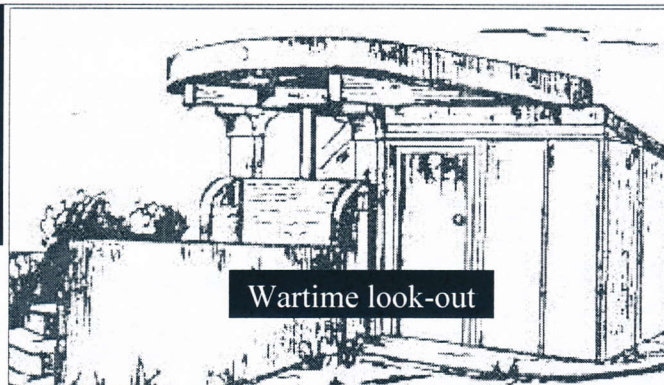
Anglesea WW2. Look-out log books record an American designed plane overflying Anglesea four times a week for a brief period during 1943/4. It was originally known as a Stinson A.

At first identification was somewhat confusing because it had been reconfigured back to 2 engines instead of the original three (nobody at the look-out had remembered the addenda sheets)

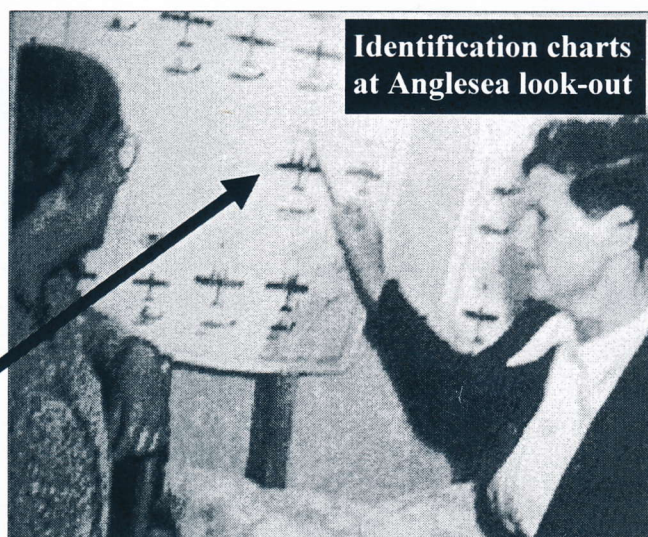
This modification came about because during that time of the war no spare parts were available for the original 3 Lycoming motors.

To keep the eight passenger aircraft in service it was re-engined with two Pratt & Whitney wasps. These engines were Australian manufactured under licence for the RAAF's Wirraways, and parts were readily available.

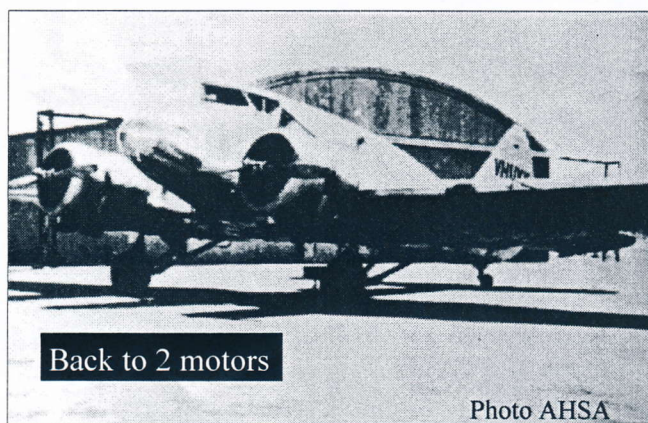
Two of these Stinsons flew from Essendon during a four month



Wartime look-out



Identification charts at Anglesea look-out



Back to 2 motors

Photo AHSA



Look-out spotters

period during 1943/4. When aged 13, I can remember on two occasions going up Bulla Road to the Essendon Airport with my father to see my Aunt board a Stinson for a flight to country Mildura.

This plane although modern in design was of metal frame and fabric covered. Aunt Nell said flying in the aircraft was extremely cold and very noisy. The noise factor came as no surprise as the snarl from it's variable pitched propellers could be easily identified from the ground.

Essendon residents always knew when a Stinson was about!

When doing the Tasmania King Island trip they flew back via Anglesea as aircraft were not allowed to track over the Maribyrnong Munition factory area to the south of Essendon. On a couple of occasions anti-aircraft guns reminded errant aircraft that they were trespassing over forbidden airspace.

Unfortunately one of the Stinsons on the Mildura run crashed near Mia Mia on the 31 January 1944. This was said to be caused by metal fatigue in the wing framework. The second Stinson was immediately withdrawn from service.

Thankfully the accident did not happen over our seaside Anglesea ■ L.B.

Tennis recollection

THE ORIGINAL ANGLESEA TENNIS CLUB.

S.E. CORNER OF TONGE AND PARKER STS.
OPENED 1930 SOLD 1945

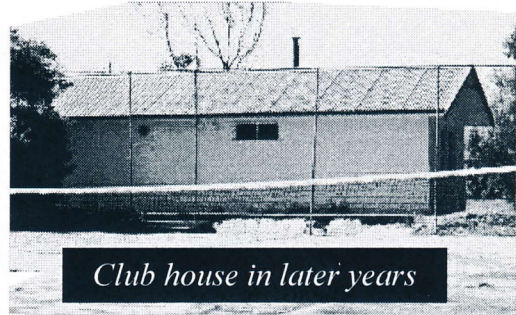
Early in 1930 A.P. Bingley and P.H. Harvey purchased Lots 10 & 13 on the corner of Parker and Tonge Streets. Also the rear portion of Webb's large Esplanade block was acquired.

Two tennis courts, a pavilion and also a miniature golf course were constructed. The opening date of the complex was Sat. 27th December 1930. Miss Joan Cameron and Mr. Stan McMillan won the opening tennis tournament.

Messrs Bingley and Harvey leased the courts etc back to the club for £50 per annum.

The courts and pavilion were sold for £1500 in 1945. The area has been re-subdivided several times by subsequent owners since this. The club pavilion was transformed into a comfortable holiday cottage. The concrete playing surface was removed in 1996 and houses built.

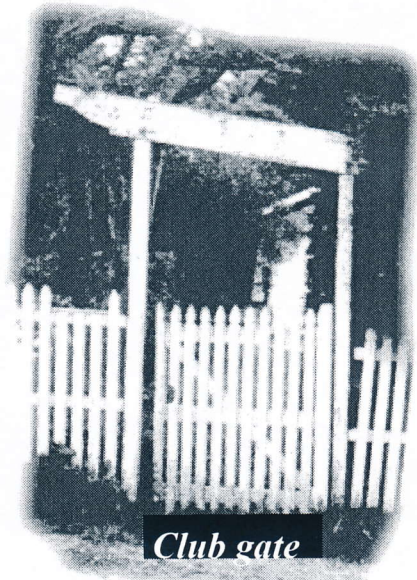
The late Joan Cameron Murch was there on opening day, and also the day the courts were removed (see photo bottom RH corner) ■ LB



Club house in later years



Opening day 1930



Club gate



Can anybody
identify these
two girls ?



Joan

James and Bertha Loveridge of 'Anglcrest' Anglesea

LOVERIDGE. BERTHA TERESA BROMLEY. (Marriner) Born 1871 Portarlington. Married 1892.

Died 1941 at Ballarat (Queen Elizabeth Home) aged 70. Cremated Spingvale 1941 (No children)

LOVERIDGE. JAMES EDWARD. Born Gawler S.A. 22/3/1864 Died 11/3/1935 aged 71.

Linoleum importer & Manufacturers Agent of 314 Collins St. Melb. (1920). Kyarra Rd. Glen Iris. (1920)

Mrs Bertha Loveridge died in Ballarat during wartime 1941.

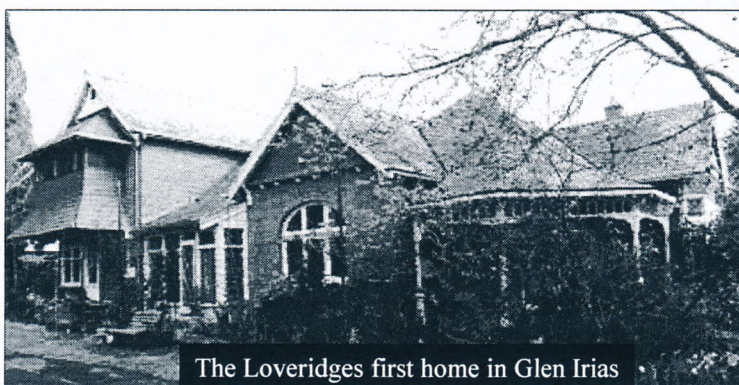
There were no Loveridge children. She had resided in Anglesea for many years before going across to that inland city..

The Anglesea connection commenced after James Loveridge retired.

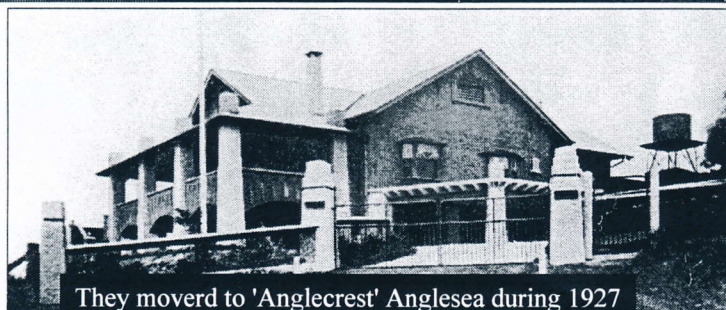
The Geelong Advertiser 30/3/1927 reported that Mr.J. E. & Mrs B.T. Loveridge's large house on the hill is nearing completion They hope to take up residence at the end of next month.

They named this two storey construction on lots 6-11 Sunnymead Road (now Harvey St.) 'Anglcrest.'

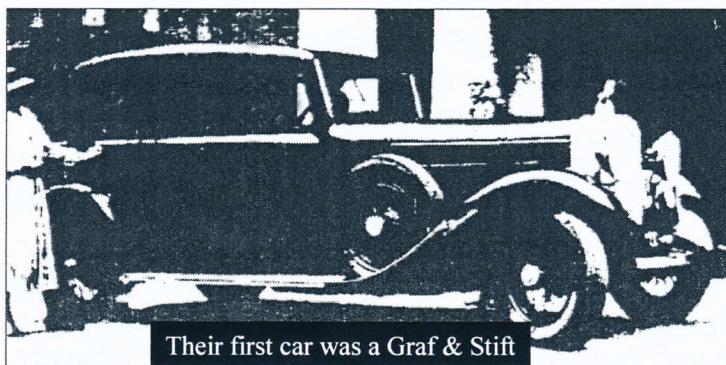
Their first car was imported from Vienna in 1923. It was a Graf Und Stift, the Austrian equivalent of a Rolls Royce. It's registration was 82417. The cost was originally £5000, and was chauffeur driven by Mr. W. J. Allan a local resident.



The Loveridges first home in Glen Iris



They moved to 'Anglcrest' Anglesea during 1927



Their first car was a Graf & Stift



Mrs Loveridge's 1939 Oldsmobile was similar to this

The 6cyl. motor was 7.8 litres. However in those days the journey from Anglesea to Lorne took one and a half hours (as against 35 minutes to-day).

During 1938 this rare Auto was donated and delivered to the Scienceworks Museum by Mr. J. Allan, where it still resides.

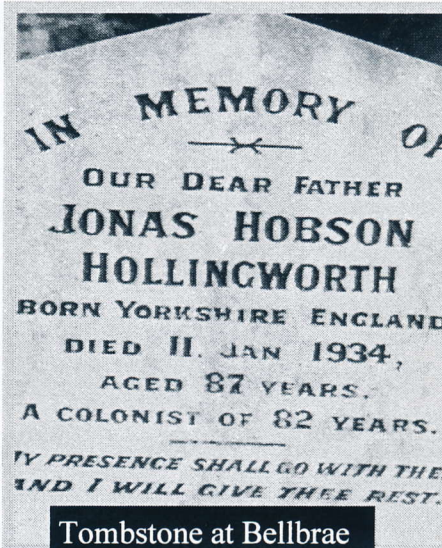
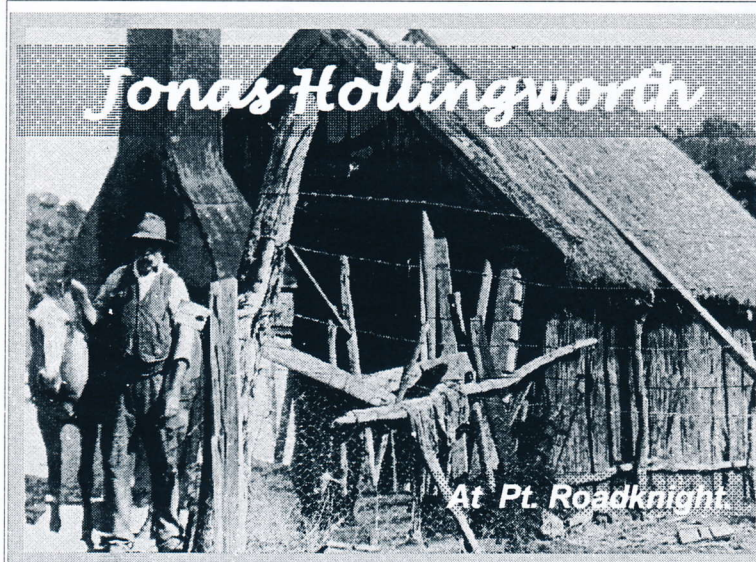
This was replaced in 1939 by a Oldsmobile series 60 sedan.

Also in 1938 Mrs Loveridge arranged for the Anglesea Presbyterian Church to be renovated, and donated a new Church Organ to that group

In addition Bertha financed the erection of a fine look-out on a reserve just down the hill from 'Anglcrest'

Research shows that 'Anglcrest' was bequeathed to the Trustees of the Church of England as a rest home for clergymen after Bertha Loveridge died. ■ LB

Past Settler series



Pioneer settler Jonas Hollingworth constructed a bark hut for the McMillans at the corner of Parker and Jackson Streets Anglesea in 1895 (it still remains). Their seaside residence "Blink Bonnie" was built later. He was also caretaker of their enlarged property period 1919 - 1926.

HOLLINGWORTH. JONAS HOBSON. Born Yorkshire. 1846. Died 11/1/1934 aged 87. Buried at Bellbrae.

HOLLINGWORTH. ELIZABETH. (Boucher) Married Jonas in 1873. Died 1909 aged 53.

Children... Mary Ann Amelia (Clarke) Born 1874 Died 1958. David Hobson Born 1876 (to N.Z.). Charles Samuel Born 1878 (to Qld.). Albert William Born 1880 D1953. Emmeline Born 1882 Died (Colac Hosp.) 1900.

Jonas Hollingworth arrived in Victoria during 1851 per sailing ship and settled with his parents at Jan Juc

He married Elizabeth Boucher in 1873. Selected 82 acres at Spout Creek in 1879 and named it "Eastern View."

Built bark hut there, and later erected a house from driftwood timber. To supplement his income he gathered local wattle-bark which was carted by bullock wagon to sell in Geelong or Melbourne. Arduous life for family - daughter Mary and brothers walked 7 miles to Lorne for schooling. Food supplies were carried from Lorne.

After wife Elizabeth was confined to Hospital in 1900 the family went separate ways. Elizabeth died during 1909.

Daughter Mary married George Clarke of

Birregurra in 1897. After working as caretakers at "Sunnymead" east of Aireys Inlet, they returned to Eastern View after purchasing it from Jonas in 1910.

For some years he resided in his fishing hut near today's Roadknight bay boat ramp. (*see top photo*) The late Peggy Bunton mentions in her book "The Hut" that Jonas Hollingworth's Robinson Crusoe hut at Roadknight was burnt by the 1919 fire. He then acted as caretaker at McMillan's "Blink Bonnie" until he returned to Eastern View in 1926.

Jonas lived with his daughter's family until he died in 1934. His grave can be seen at the nearby Bellbrae cemetery

■ *Lindsay Braden*