

Coastal Current

seaside tidings from ...
The Anglesea & District
Historical Society Inc.



Summer Snippets

Welcome to the first newsletter for 2005. Guest speaker for our December meeting

was Dr. Allan Mawdsley who gave a fascinating power-point address on the History of the St John Ambulance in Victoria, plus the establishment of their interesting Museum at Williamstown.

What a holiday period we had. It was a busy time at the Museum over the Christmas -New Year break.

Amongst our visitors, were Linda and Gary Klintworth. Linda's great grandfather was Frederick Harvey, who operated produce stores in Ryrie Street, and later became a partner in Harvey, Dann & Company, Flour Millers and Produce Merchants, with offices at 96-98 Ryrie Street (the building now occupied by Griffiths Books). Linda can remember staying at Harvey's holiday cottage and walking across the paddocks to Marion's store on Anglesea's River Esplanade for supplies.

Other happenings at the Museum over the summer were requests for information from Journalists for articles on Anglesea, sale of photographs and a number of visitors with past family connections in the area.

Because we believe our Newsletter is important for keeping in touch, we have formed a sub-committee to help produce the bulletin. *We are always looking for areas of interest to our members, so if you have an idea for a future story, or want to see an article about a particular building or area please notify the Secretary, and we will endeavour to do the research and present the article.* ■ *Bruce Bodman*



Dr. Allan Mawdsley



Linda & Gary Klintworth

**Newsletter No 69
February 2005**

**Anglesea & District
Historical Society Inc.
Box 98 Anglesea 3230
Victoria. Australia.
Incorporation No.
A0009246F**

President :
Norma Morrison
(03) 5261 6239

Secretary :
Bruce Bodman
(03) 5263 1249

Treasurer :
Thelma Western
(03) 5263 2865

Meetings
**The Historical Society meets on
the first Sunday of each month
unless otherwise notified**

Museum
**Our Museum at 5a McMillan
Street Anglesea, will be open
during the Xmas and Easter
holidays on Sundays 2-4pm or
by appointment.**

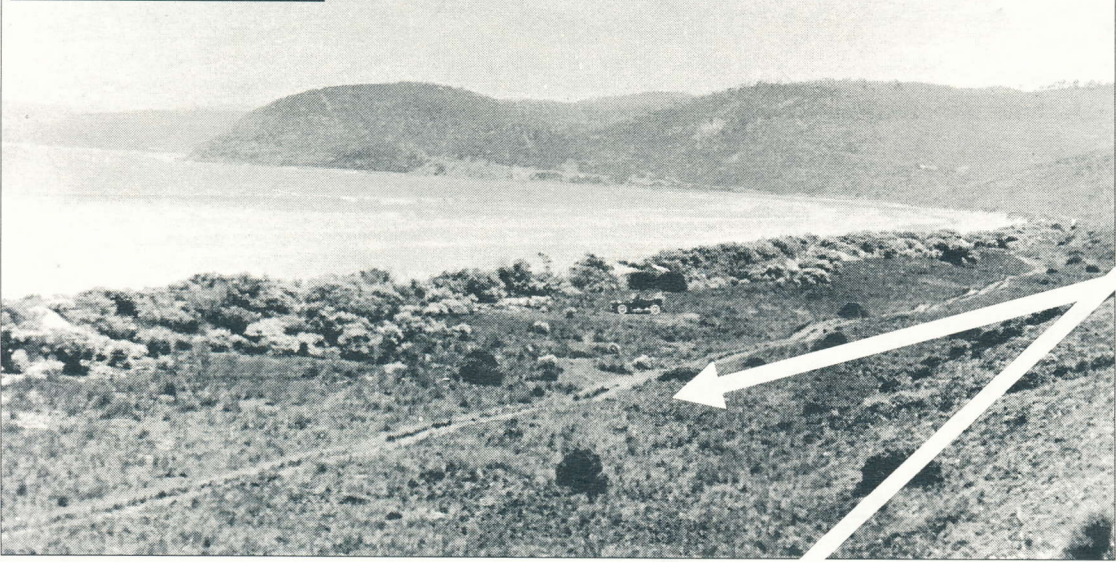
.....
Web site -
**[http://home.vicnet.net.au/
~angen/](http://home.vicnet.net.au/~angen/)**

e-mail -
nmorrison@froggy.com.au



EARLY GREAT OCEAN ROAD - EASTERN VIEW TO AIRIES

1930



Servicemen's section

Few people realise that after the returned servicemen completed the Lorne to Eastern View Section of the Ocean Road in 1922, the remainder of the journey to Aireys Inlet was done on a basic two wheel track via an inland detour.

Eastern View Hotel 1929



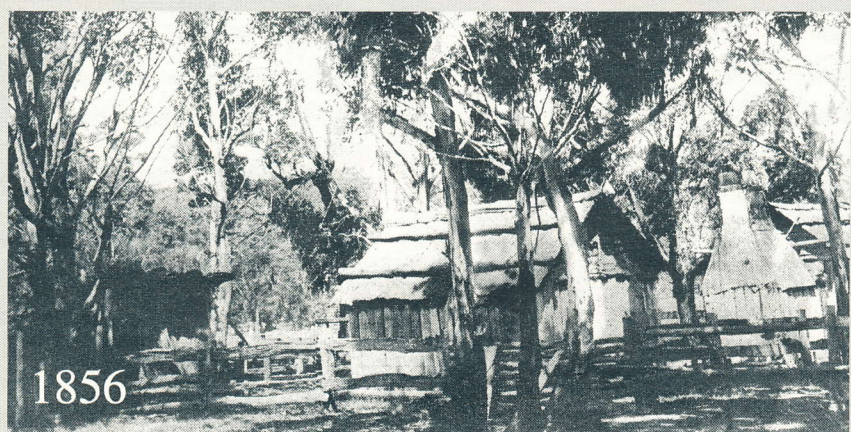
Private contractor's section

It was not until after the bridge over the Aireys Painkalac Creek was built in 1931 that the road went straight through from Aireys to Eastern View, and linked up with the Returned Servicemen's section which ended outside Clarke's farm



■ L. Braden

1856 Aireys photo found!

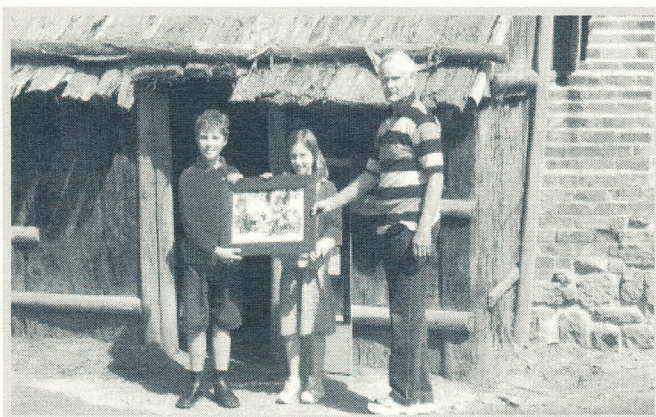


The Old Bark Hut

A recent find of what is no doubt the earliest photo ever taken at Aireys Inlet has fascinated many people including the local school children. The photo was brought to a McConachy / Pearse family gathering in November. Written in pencil on the back of the photo was Dec. 1856.

A government record of Improvements to Squatting Runs in 1856 records that *Angahook* had a slab house and two bark huts. The photo shows just that, a roughly built slab house and two barks huts. One hut was used for accommodation and the other one for farming equipment.

The grade three and four children from Aireys Inlet School visited the hut, in December. They learned of the history of the hut, ate biscuits made from Sarah's old recipe book and watched a re-enactment of the era by Sarah and Robert McConachy (alias Melva and Stan Stott). Joshua Maher and Ivy O'Dwyer, as representatives of the school, were presented with a framed copy of the old photo. The old photo shows that quite large gum trees were growing by the huts then. ■ *Jan Morris*



Joshua Maher and Ivy O'Dwyer are presented with a copy of the 1856 photo by Lyle McConachy, a descendant of the original owners



Sarah and Robert McConachy presented by Melva and Stan Stott

Have you any early district photos that we may copy ?

Griffin's Knitlock construction was used at Winchelsea & Lorne.



Winchelsea grandstand at the Eastern Reserve



Did Walter Burley Griffin visit Winchelsea and Lorne - or design from afar?

During 1912 Walter Burley Griffin, Landscape Architect from Chicago, won first prize of \$3500 (£1750) in a competition for the design of Australia's National Capital. HE ALSO PLANNED a startling Eaglemont land subdivision (created with rear open space,) the opulent Capitol theatre in Melbourne's Swanston Street, the ornate Essendon Incinerator (at 180 Holmes Road Moonee Ponds) which was used during period 1930/42, and many other projects..

WINCHELSEA GRANDSTAND. The Winchelsea War Memorial Precinct, which includes the Winchelsea and District Soldiers Memorial 1914-1918 Grandstand along with the 1939-1949 Memorial Gates at Eastern Reserve, was nominated by the Surfcoast Shire for inclusion in the Victorian Heritage Act 1995. These buildings and structures were accepted as from 10/2/2005.

In partnership with the Winchelsea Community, the Surf Coast Shire is seeking Government funding to conserve and restore this district icon. The Memorial Grandstand is of particular historic interest as it was constructed using the novel and ingenious Knitlock pre-cast interlocking structural tile system invented by Walter Burley Griffin and patented in 1917. It was one of several buildings built in the Surf Coast Shire using this system and is the most substantial and public accessible example of this building technique.

Knitlock tiles were also used in the construction of 'Jura' at 240 Mountjoy Parade Lorne and several other houses in the district. These interlocking strips were manufactured in a workshop in Hesse Street Winchelsea, and this adds to the historical significance as an example of a local initiative in using an innovative building system.

Surf Coast Shire recreation officer **Peter Bromley** said listing approval of the grandstand will help ensure the unique structure is preserved for the future. Short and long term conservation works will proceed to maintain the aesthetic and structural aspects of the grandstand. ■ LB

