

1/

ANGLESEA & DISTRICT HISTORICAL SOCIETY INC

NEWSLETTER No. 41 - JANUARY 98

PRESIDENT
Val Amery
(03)52631852

SECRETARY
Shirley Forsyth
(03)52631430

TREASURER
Betty Lloyd
(03)52633442

FIRST MEETING FOR 1998 - SUNDAY AFTERNOON FEBRUARY 1st - 2p.m.

As intimated in the last Newsletter the idea of all meetings being held in the afternoons was floated. In December this was agreed upon when members were almost unanimously in favour of the move - so mark in your diaries - future Historical meetings will be on the first Sunday of each month at 2p.m. In February we will be interested to hear what Lindsay and Margaret Tricker have to tell us - their individual presentations were enjoyed very much - this is to be a joint effort on different subjects.

Our Annual Dinner was again most successful when more than 60 guests enjoyed Bishop John Bayton's talk about Israel and Palestine - his intimate knowledge of the subject gave his audience an idea why this troublesome spot in the world has little chance of a lasting peace. The Bishop who now lives in Anglesea (when he's not somewhere else!) and has agreed to speak to us again, probably mid-year between spending time in Brisbane and then again to Jerusalem - possibly July.

Mavis O'Donnell took members on a great trip thru' Turkey and then our Town Criers gave us some highlights of the Championship meet in Vancouver to entertain us at the Christmas meeting - again President Val generously presented members with Christmas cake as they departed.

GENERAL

The Museum has been open on Sunday a/noons during the holiday season and we are grateful fo those members who have taken on duty roster. Generally they have been well rewarded for their efforts meeting up with visitors and some locals who are most interested in what we have to offer.

NOTELETS WITH ENVELOPES INC.

A new venture - we have packs containing 3 attractive designs - an early scene taken before The Road was Made, Split Point Lighthouse and Anglesea Bridge in the 1890's - cost is \$1:50 singly or 3 for \$4:00. We also have a new supply of the popular coffee mugs - choose one or both of these items for that special little gift when next at the Museum.

ACQUISITIONS

An old alarm clock -circa 1860 - of most unusual design given to us by Mr. Len Newman -it had come from the Bell family of Addiscott.

Some snaps of early Anglesea Surf Club building from Tony Garden now of Noosa who had been contacted by local identity Michael Hancock.

SPECIAL BIRTHDAYS

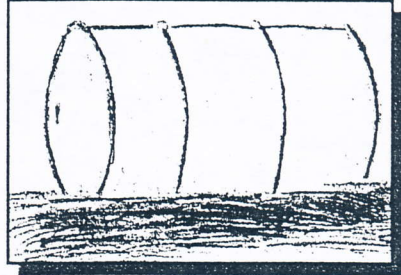
Long time member Ivy Luke celebrated her 90th birthday in December - members send belated greetings - popular past President Edith Lawn was 85 mid January. If we have missed your special occasion please our accept best wishes!

Trivia

1. What was the original name of O'Donohue Road?
 2. What was Harvey Street at first called?
 3. What was the initial name of Holmwood Avenue?
 4. What name was Lane's Road changed to?
 5. What was the previous name for Camp Road?
- * Answers at bottom of page ↓

Wartime drama at Anglesea

watch duty at the Loveridge Observation Post to Bill Lidgerton. The cloud level was high, making it easy at 10.59hrs. to identify the modified twin engine Stinson returning from it's regular Tasmanian run, on a north easterly



During the evening of October 31st 1940 the German raider Passat crossed the approaches to Port Phillip Bay. It laid 40 mines midst the shipping route off Cape Otway. *The City of Rowville*, a US freighter went down eight days later, after striking a mine in this vicinity.

wartime deviation course towards Melbourne - *yes it appeared another dull day was coming up.*

needed *as it appeared to be drifting towards Anglesea!*

Throughout 1942/3 Japanese submarines were also known to be operating along the Australian coast. They made at least 21 torpedo and gunfire attacks off the eastern seaboard, on vessels plying between Melbourne and Brisbane. A constant surveillance was needed over Bass Strait including *Anglesea's own backyard.*

The tranquillity of the hillside was interrupted at 11.20hrs. by the sound of the telephone. Geelong Control phoned to advise

Things came to a head at 16.55hrs. the next day when Anne Sleeth was on duty. An unidentified object was seen out from Pt. Roadknight *traveling north towards the mouth of the Anglesea River.*

‘A big bang may come’

Mr. Monks waited apprehensively on the beach near the stream's mouth for the offending object to come closer - *it was found to be an oil drum!*

At 10.00hrs. on the 26/10/1943 Joyce Graham handed over

that they had been unable to trace a suspected mine observed the previous day, 100 yards out to sea from the Eastern View Hotel. A sharp lookout was

A Policeman from Lorne arrived with pencil and notebook the ready. After solemnly noting markings visible on the offending object, he went on his way.

Life then returned to normal at the peaceful seaside township of Anglesea □ L.B.

Lane's 'Sunnymead' Homestead

Charles J. Lane purchased the 106 acre 'Sunnymead' property from E.J. Alston in 1909.

Perhaps the old Sunnymeade Home- stead's greatest moment came when Charles entertained the Governor and party there for



He occupied this after Marshall vacated in 1913. The acquisition traversed an area from Gilbert Street back to the Ocean. Boundary Road bordered it's western side, with Buckhurst's large block at it's eastern boundary. The coming of the Great Ocean Road split this lot into two parts. It has been re-subdivided several times since.

lunch. The above photo hows His Excellency the Earl of Stradbroke and party, before leaving to open the Eastern View to Lorne section of the Great Ocean Road in 1922. *The old 'Sunnymead Homestead was destroyed on Ash Wednesday.* □ L.B.

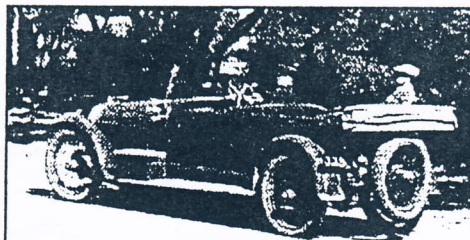
- Trivia answers..... 1. Government Road. 2. Sunnymeade Road. 3. Colledge Avenue. 4. Great Ocean Road. 5. Old Geelong Road.

* 'SCOTCHMAN'S TRACK' *

Locals from Anglesea and Aireys were not happy with the fee charged to use Lane's coastal road
So it was -

'Bother the toll - turn at the fallen log, and by-pass the blooming thing!'

I was pleased recently to find, and walk along, an overgrown road from the past. This temporary loop came about in the late 1920's - in those days it was known as the 'Scotchman's track'. The cunning route ran off the Great Ocean Road just above the Aireys Inlet side of Urquharts Bluff. Many motorists used this to by-pass the Sunnymead toll gate east of Boundary Road. In 1919 Charles Lane retired from his successful Tailoring business in Collins Street Melbourne. He tried his hand at land development. Over the years he and his son acquired a large tract of land between his Sunnymead homestead, east of Aireys, and the landslip on the western side of Anglesea. By 1922 he was marketing home sites between today's Harvey, Melba, the



C.J. Lane in his touring car

coastline and O'Donohues as 'The Sunnymead Estate' - named after his homestead down the track - sales were disastrously slow!

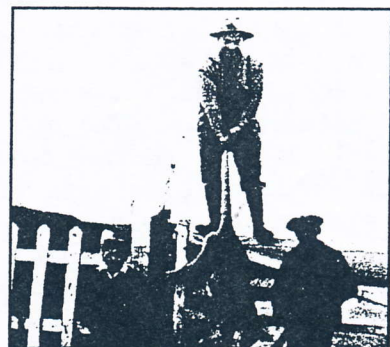
To enhance the new subdivision 'C.J.' at his own expense constructed a new road through the slip and his holdings, to give the public access to the once private area along the coast, and also provide an easy passage through to Aireys.

Unfortunately his private thoroughfare (surveyed by the CRB) was soon badly cut up by heavy through-traffic to Lorne, and constant maintenance was urgently needed.

The greatest difficulty was that the Winchelsea Council was not at all interested in happen-

ing. Sunnymead Guest House to collect fees to maintain the scenic road. Car and driver two shillings; plus one shilling per passenger, charabancs; twelve shillings and sixpence.

For a number of years those in the know circumvented the Toll Gate by using a route through the forest to Gilbert Street. This



Urquharts toll gate 1928

became known locally as the 'Scotchman's track.' The toll gate was later moved to below the cutting at Urquhart's Bluff to stop this.

Charles Lane died on 14/9/1925 aged 58. His part of the Winchelsea Shire was amongst a large portion annexed to the Barrabool Shire in 1927.

To the delight of the locals, the toll on Lanes road was removed in 1930. By 1936 responsibility for the whole of the Great Ocean Road was passed on to the Country Roads Board.

The next time you are travelling along the picturesque seaside route towards Urquharts Bluff, spare a thought for Charles J. Lane. He was the person who initiated the construction of this delightful corridor - otherwise we may still be wandering along that old inland route to Aireys □ L.B.

SUNNYMEAD GUEST HOUSE

GREAT OCEAN ROAD TRUST SCALE OF CHARGES.

MOTOR CARS	2
MOTOR CYCLES & SIDECARS	2
MOTOR CYCLES	1
PASSENGERS	1
CHARABANCS	7

THE ATTENDANT WILL GIVE YOU A RECEIPT.

Sunnymead toll gate

ings at the Coastal end of their Shire, and voted to have nothing to do with the roadway. In 1925 the road was officially opened to the public and a toll gate displaying the Great Ocean Road Trust charges was placed outside the Sun-

Lindsay Braden's contribution has been a very important part of our quarterly Newsletters and we know members appreciate the variety of subjects presented. On this occasion Lindsay has once again come up with some interesting items - and when you travel along the roads mentioned in TRIVIA in future test yourself to see how many of the originals you can remember!

In this edition we also have a very 'timely' article from the pen of Edith Lawn- as we are all very well aware, the surf continues to claim victims and lifesavers are kept busy especially when swimmers disregard the flagged area.

A Surf Rescue in 1928

Camping Ground Beach - Anglesea January 1928.
As related by Mrs. Edith Lawn (nee Curnow)

Our 4 week camping holiday at Anglesea was drawing to a close and shortly we must return home to Ballarat. I had just had my 15th birthday and had enjoyed our holiday immensely. After packing the car it was decided to have a last visit to the beach and to cool off with a final swim before heading off on the journey home.

Our party was made up of my Mother and Father, Uncle Bill Veal and Auntie Bertha, my father's friends Mr. & Mrs. Alf Fry and myself Edith, all of Ballarat.

An area just beyond the campers' beach was chosen and the water was very inviting after our hot time breaking camp. My Father, (Thomas Curnow) and Uncle Bill Veal ventured further out than we women and we were oblivious to the fact that Dad and Uncle were in difficulties. It seems that they would try to catch a wave, only to be swept under the water and pulled out to sea. After several attempts Dad was able to thrust Uncle Bill, who was of smaller and lighter build than Dad, onto a wave which he was able to ride into the beach and alert us of Dad's plight. Mr. Fry and I decided to run for the lifebuoy which was housed in a tin shed situated at the end of the surfer's beach, near the entrance drive to today's SLSC. Uncle Bill was exhausted with his experience in the surf and decided to rest until we returned with the lifebuoy. It had been a hot and very tiring 15 minute run up the beach, wondering about Dad's situation, and having to cross the wide river mouth twice before we arrived back, thankful to find that Dad was still above water.

Uncle Bill swam out with the buoy and I played out the line to him. We were able to rope Dad in just in time, as he later told us that he was hearing "beautiful music" and was close to drowning.

After a rest on the beach we headed off home, but I had to drive the old "T" model Ford back to Ballarat with Dad recovering on the back seat. Just as well the police were not patrolling as they are these days!!!

Dad later offered 5 pounds (more than a week's wages in those days) to place a bell and lifebuoy at or near the river mouth but the offer was refused, to Dad's disappointment. How convenient that would have been, and only half the run!!

Mrs. Edith Lawn (nee Curnow) January 1998.

FOR PERSONAL REFLECTION

"History teaches everything, even the future". - Lamartine.

A French Romantic poet and politician who lived between 1790-1869.

"The historian is a prophet looking backwards." - Schlegel

There were two brothers, one a German Romantic critic chiefly known in England for his translations into German the plays of Shakespeare (1767-1845) his younger brother (1772-1829) a Romantic critic and novelist - take your pick as to the author of the quote!

"History is the depository of great actions, the witness of what is past, the example and instructor of the present, and monitor to the future."

- Cervantes - Spanish novelist and dramatist and author of "Don Quixotte (1547-1616)

SUBSCRIPTIONS: A cross here will denote your sub. has not been received. Please forward the \$7:50 to Treasurer, 9 Belton Ave, Anglesea.