

ANGLESEA & DISTRICT HISTORICAL SOCIETY INC

NEWSLETTER No. 39 - JULY 1997

PRESIDENT
Val Amery
(03) 52631852

SECRETARY
Shirley Forsyth
(03) 52631430

TREASURER
Loris Pavia
(03) 52631529

ACQUISITIONS

We have been very fortunate to receive from Mr. Gordon Dixon some valuable volumes of Early Victoria. To restore covers and acquire special storage boxes we are preparing a submission seeking assistance from the Community Heritage Conservation Grants as scheduled by the National Library to carry out this project.

Following the unveiling of the commemorative plaque at the Lookout we have received photos and video of the ceremony which are a most valuable addition to society records. Another interesting consequence was a letter received from a visitor to our area who had parked at Loveridge Lookout. A Trentham resident he wrote of his appreciation of our effort in acknowledging the service of volunteer aircraft spotters - a group he said almost forgotten by many folk. He has since sent some aircraft identification charts and other memorabilia for which we are most grateful. Trentham had a similar post during WW11.

COFFEE MUGS: featuring a logo:- Anglesea & District Historical Society and the Split Point Light House (Prepared for this purpose by Edith Lawn and her daughter Val D'Angri) are now available for purchase at \$10 for members and \$12 nonmembers. Consisting of fine English bone china with gold rim and green logo they make an excellent gift and not being too large and heavy looking ideal for either tea or coffee. The large carton containing 10 boxes each containing 6 mugs was opened at committee meeting on July 4th - at the close of Sunday's proceedings 24 mugs had already been accounted for! Don't delay your order!!!

OUR DISPLAY of photos in the shopping centre continues to create interest - the original set dealing mainly with commercial enterprises has been changed - the current display is about the construction of the Great Ocean Road - we are grateful that Ian Begley has given us this opportunity to further publicise our Society with such an exhibition.

GUEST SPEAKERS

Our guest speaker in May, Margaret Tricker, has sent us a delightful little patch work wall hanging "Home is Where the Heart is" - it will be hung at the Museum.

When the power failed at 5a McMillan Street necessitating a new line to be brought in, the June meeting was transferred to the Lions Village - members did appreciate this excellent venue. To add to our woes the scheduled speaker had to cancel at the last moment which meant an impromptu programme. President Val struck the right chord with the Gluhwein on the very first day of winter - and what a chilly June 1st it was too. This warming quaff was enjoyed by the large assemblage after we'd watched the plaque unveiling and seen a video with the late Ray Clarke being interviewed by Lindsay Braden and Allan Poigndester. Brian Randall had gone to a lot of effort preparing his talk on the Salvation Army during WW11 for our July meeting. Robyn his wife assisted with showing some most interesting slides of the various vehicles used by the Salvos in the different theatres of war - converted furniture trucks and vans of all

shapes and sizes. Various groups had raised funds for the purchase of these - shown were the Golfers of NSW, Tweed District, Murwillumbah Riversdale Golf Club in Melbourne (to name but a few) the acknowledgments being clearly printed on the vehicles. The Randalls were delighted to receive their coffee mugs from Joan Forster who proposed the vote of thanks.

The AUGUST MEETING will be in two parts - on Sunday morning the 3rd at 10.30a.m. we shall meet at the Museum to arrange a car pool to the Iron Bark Basin where the walk with Professor Ian Rae to the Jarosite Mine site will take place. Lunch for the walkers will be taken at the Museum followed by the usual meeting at 2 p.m. when Prof. Rae will speak about jarosite mining in Victoria. Perhaps you could let either Val or Shirley know if you intend being one of the walkers.

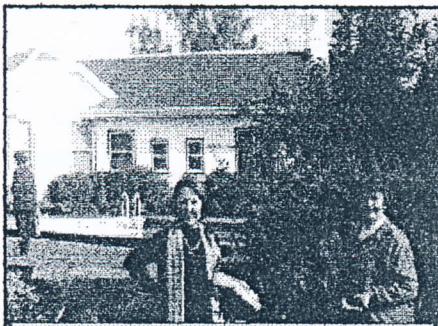
It has been suggested that we visit the Deakin Campus at the Wool stores for a future excursion - keep this in mind!

Anglesea Historical

Recent happenings

MOORAMONG - SKIPTON

On 15th May some of our Society members joined a Probus coach trip to the Mooramong 1500 hectare pastoral property just off the Glenelg Highway at Skipton, and enjoyed a National Trust experience.



Entrance garden at 'Mooramong'

The inspection of the homestead felt similar to entering a time warp, with furnishings etc exactly as the McKinnons placed them - even 1978 newspapers and magazines were still on the coffee table. It felt as though the owners had just gone down to the local shops and would arrive back at any moment.

Mooramong homestead was built in 1873, and altered to its present style in 1938, when Scobie and Claire McKinnon took up residence. Donald (Scobie) McKinnon was well known for his participation in horse racing, and Claire McKinnon as Claire Adams was a famous Hollywood actress in the 1920's. Donald died in

1974 and Claire in 1978. The property was acquired by the National Trust ▷

THE LOVERIDGE LOOK-OUT PLAQUE

During the afternoon of Anzac Day 1997, a large gathering (including the Mayor and local Councillors) saw Joan Cameron-Murch (who did watch duty at the Look-out) unveil a plaque provided by our Historical Society to recognise the 56 local Volunteer Aircraft spotters who manned the observation post between 1942/45.



Arthur, Joan and Hilda at the Look-out

Also amongst the surviving Spotters with Joan were Hilda Allan, Arthur Simmons and Jack Russell whose mother conducted the last recorded watch at the hillside viewpoint.

Fortunately the weather was kind to our outdoor cause. Conditions were perfect. Afternoon tea was later served at the Museum rooms ◻

Anyone for golf?



Back in 1928 it was possible to purchase a Hudson Super 6 sedan for a mere £450. During that heady year you could view Harold Lloyd's humorous new film "Speedy" at the St. Kilda



1928 Hudson super 6

Palais, or attend the astonishing new musical 'The Desert Song' at His Majesty's. The pace of life was also changing at the seaside township of Anglesea - the age of the motor car was altering the vacation scene.

By the late twenties a new generation of holiday-makers was arriving at our sea-

side region for the summer and Easter breaks. Fishing and hunting were no longer the main attraction. Different leisure-time enticements were being sought.

The local Progress Association, spurred on by the new owners of the Hotel, held a meeting to acquire land and form a 18 hole Golf Links east of the river mouth reserve. The area was mostly Crown Land, and the layout was eventually planned in the vicinity of the top end of Purnell Street and today's sewerage outlet track.

In 1928 a contractor with a team of seven sturdy horses pulling a three furrow plough, broke up the ground for the planting of grass on the new fairways. The sowing was delayed by dry weather. Maybe this hold-up was just as well, because the Lands Department then

specified only to give permissive occupancy of the site. The Progress Association met and decided that they were not prepared to make any further improvements without a lease, or a future option to purchase.



The 1928 fairways were still visible 19 years later in this 1947 aerial photo

The proposed links was abandoned. The zone gradually went back to the rough.

Enthusiasts had to wait another 25 years before they could play a game of Golf on a Anglesea course

Lindsay Braden

Cottage near the sea -

GARDENER'S COTTAGE - 1891 - 1908

LOTS 10 & 20 HARVEY & PARKER STS (SIDING ON TO MURRAY ST.)



James and Alice Gardener of Geelong (grandparents of the late 'Doc' Bingley) purchased lots 10 & 20 Gladstone Estate (2 acres) in 1885. Their holiday cottage was erected in 1891. This was destroyed by the 1908 bushfire, and not rebuilt. For many years the site was identified as 'the chimney block,' after the one smokestack left standing. Both these lots were sold to Frederick Harvey in 1912, and were later re-subdivided. Gardiner St. (always mis-spelt in the Council's early rate books) is named after the Gardener family L.B.

EARLY ANGLESEA FAMILIES 'THE NOBLES'

Noble Street Anglesea is named after a pioneer who first acquired land on the Winchelsea side of the river in 1868. The man in question, James A. Noble, arrived at Geelong on the 'Ferguson' in



James Noble

1840 and set up a business in Corio St. It would seem that James loved to purchase land as an investment for the future. Amongst the many blocks he procured were 4 large sites on the western side of the Anglesea river. Rate books record that by 1875 James had acquired some 1202 acres in the area. Some of this parcel was marked as being part enclosed, and the erection of a dwelling was also noted.

Alas this was destroyed by that years bushfire, and to make matters worse neither the building nor the contents were insured!

We will never know just how disillusioned James was by this catastrophe, but during the very same year he transferred these 4 large allotments to his son George to presumably utilise for grazing purposes.

Unfortunately for George there was a chap by the name of Tom Austin, who lived across in Winchelsea on a property named 'Barwon Park.' Tom had a brother William back 'home' in Somerset. **Young William despatched to his kinsman in the Colony, 24 rabbits and 14 hares for hunting enjoyment.**

I know not what happened to the hares, but do know that by 1880 thousands of rabbits had swarmed across to Anglesea and laid Noble's land bare, making it no longer suitable for grazing requirements but

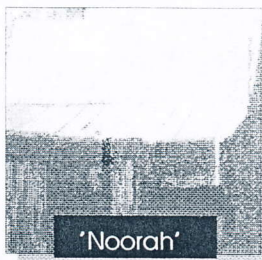
ideal for subdivision!

By this time Anglesea was popular with fishing and hunting parties from Geelong. Many were delighted with what they saw, and enquired about purchasing land for a holiday cottage. George hoped to take advantage of this situation, and instructed his surveyor to subdivide some of this well sheltered land.

In 1884 the first release was put up for Auction under the name of 'The Gladstone Estate.' These 35 sites fronted between what we now know as Harvey, Parker, Jackson Streets and the River Esplanade - prices asked were between £5 and £10 per one acre block.

The initial lots were proximal to the coastline, because at this stage the bridge did not exist. These were nearest to the river mouth - the quickest way back into town. During 1886/87 there were another two releases of Nobles land.

By 1889 George had constructed his home 'Noorah' at the corner of what we now know as Noble St. and The River Esplanade. He placed a river boathouse almost opposite. The 'Addy' 23/10/1889 reported that an inspection was made by representatives of the Winchelsea and Barra-bool Shire Councils for a bridge to connect both sides of the stream George Noble was amongst those



'Noorah'

present, and afterwards entertained everyone in his new home (close to the proposed carriageway).

In 1892 the transit platform was built, and land in the Noble Street area was then released for sale.

'Tom Austin's rabbits caused George Noble to subdivide 325 acres of Anglesea land originally purchased by his father for grazing purposes'

George and his wife Fanny moved from 'Angahook' at Aireys to live at 'Noorah' in 1915. They shifted into "Glissy" in nearby Colledge Ave during 1922, and lived there until he died in 1933 ▷



'Beachmount'

JAMES' SECOND SON JOHN CHARLES retired from his grazing property 'Glentree' at Modewarre in 1913 when aged 66. He purchased 'Beachmount' a W.B. dwelling on the Harvey Street hill, from J. F. Baxter, a timber merchant from Geelong. For many years Charles' wooden boat was a familiar sight on the river. - he loved fishing! Charlie died in 1938 aged 91. 'Beachmount' was demolished in 1990, it was aged 101 years at that time □

Lindsay Braden .