

1/

ANGLESEA & DISTRICT HISTORICAL SOCIETY Inc

NEWSLETTER No 34 - APRIL 1996

PRESIDENT
Val Amery
631852

SECRETARY
Shirley Forsyth
631430

TREASURER
Loris Pavia
631529

The Society's contribution to Heritage Week (actually a fortnight) 14th - 28th April is on display in the village Information Cabinet near the Commonwealth Bank - if you have not already seen the photos of the "Urban Streetscape", the theme for 1996 - please take a minute or two to stop and look next time you are in the area. Our display covers over 100 years - from 1894 to 1996 - our thanks are due to President Val and ever willing assistant Jim Amery and Lindsay Braden for arranging the pictures.

MEETINGS

Our most recent speaker, Valda Connolly, entertained members on April 13th with a great recollection of stories about the early pioneer families along Spring Creek, numbers of whom were her forbears, some names mentioned being the Gundrys, Imers and Goodalls. There were questions aplenty for Val to answer as members wanted to learn more of an area we pass thru' quite frequently but seldom stop to pause and think of its earlier inhabitants.

This year's programme was off to an excellent start when Dr. Peter McPhee, Professor of History at Melbourne University, told a fascinating story about the history of Languedoc, an area in southern France. It was interesting to hear how the whole fabric of the territory had changed over the years, vineyards have replaced sheep tho' the stone walls remain as a reminder of former activity. Castles built on the top of impossible craggy outcrops bore testimony to the many times the inhabitants had to defend themselves from warring neighbours.

In March we heard a very different story related by Sqd.Ldr.J. Hollway who was introduced by a proud grandmother, Jean Wendt. He had been a member of a team detailed to recover aircraft lost in the Pacific theatre of WW11. Slides gave a graphic insight into the conditions experienced by the team and the difficulties in identifying the crew members (and defusing still live ammunition after all these years). As dental records were used the dentist on the trip played a vital part in this identification process.

IN THE FUTURE-

PLEASE NOTE THAT MEETINGS FROM MAY UNTIL
SEPTEMBER WILL BE HELD ON SUNDAY AFTERNOONS
at 2p.m.

MAY 5th - 2p.m. Frank Flynn will speak on the History of Surfing. We have heard Frank on previous occasions when his subjects were "shipwrecks" and the "Anglesea River". Both addresses were thoroughly researched and reflected Frank's passion for all things aquatic.

JUNE 2nd 2p.m. Ken Nall's subject will be M.,M., & M! Methodism, Medicine and Marketing and will follow the fortunes of some of his forbears. Ken too has spoken to us previously at an annual dinner.

EXCURSIONS

MAY 22nd - Wednesday - The Royal Botanic Gardens .
1996 celebrates 150 years of 'our' gardens' existence.
There will be a guided walk for which no charge is made and entry to the Gardens is free.
Public transport will be used from South Geelong Station.
Give Val - 631852 or Shirley - 631430 a ring to give us an idea of numbers for cars to rail. Final arrangements at May meeting.

JULY 23rd - Tuesday - Melbourne Synagogue and Jewish
Museum

This trip organised by Anglesea Probus with invitation to Society members and friends to participate.

Travel by bus - cost approx. \$12

Entry money with morning tea and lunch \$16
included

Phone Val - 631852 before mid June

LIBRARY

Thanks to Margaret Ingham who organised with Claire Robert's help the catalogue cards for our modest book collection. We would like you to browse or borrow or donate suitable volumes to enhance our "Library".

NEW GUINEA ARTEFACTS

With some reorganisation we will be able to display our fine collection of New Guinea weapons, masks etc. which were donated to the Society by Father Eames.

OTHER ACQUISITIONS - Two magazines of 1934-35 vintage from Margaret Harvey.

Two new books from the continuing series " Along the Great Ocean Road" Coal Mining and Oil written by Keith Cecil.

NEW MEMBER - We would like to welcome Beryl Parsons our newest member.

There are just a few present members who have yet to renew their subs - as we have had to pay our insurance on total

membership we would appreciate this payment as soon as possible.

It is with much regret that we record the passing of the following named members.

Miss Marion Borrett a long time member who spoke at one of our meetings about the aircraft observer post some years ago.

Phillip Marriott who was a regular at our annual dinners - our sympathy is extended to Hilda and family.

Miss Mary White - well known in the community for her devotion to our natural bush and environment. She too was a guest speaker at a meeting when she recalled incidents of her early childhood at Apollo Bay.

LOVERIDGE LOOKOUT PLAQUE

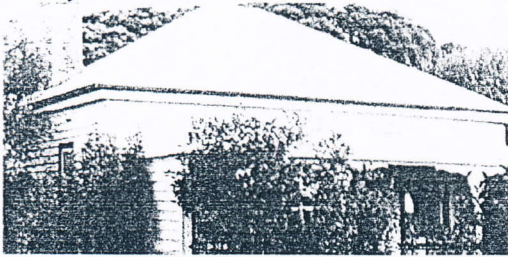
The Society plans to erect a plaque commemorating the work done by local voluntary air craft observers during WW 11. when the post was manned "round the clock". Samples of suitable wording were discussed at the April meeting - cost is now being assessed, this being in the capable hands of Lindsay Braden who has researched the history of the Lookout. Another one of his interesting articles on Anglesea identities follows on the back page.

The R.H.S.V. has published a special booklet highlighting the establishment of Melbourne's Pride and Glory as it dubs the garden. The chapter entitled UNDER PRESSURE gives some indication of the problems faced by the early directors. "WATERING THE GARDEN" - a simple enough task you would think - except if access to the reticulated water supply of Melbourne was denied for over sixty years, and your garden is as large and diverse as the Melbourne Royal variety. The vital task of watering the Gardens was for successive Directors one to consume much of their attention. As the Gardens evolved and grew so did the demand for water. Baron von Mueller and William Guilfoyle both devoted considerable effort to ensuring the extensive plantations they were developing would not die for lack of fresh water. The location of the Gardens on the banks for the Yarra meant hand cartage of water from the river was possible. The employment of 'orphan' boys using water carts to water the young plants was the only means available to supplement the rainfall. As early as the summer of 1850-51 it was apparent that an improved system was necessary.

Mueller enjoyed access to Yan Yean water briefly, but mainly relied on a steam engine to pump water from the Yarra. Under Guilfoyle large sums were invested in a reservoir and machinery but with disappointing results. It was not until the construction of the Dight's Falls Scheme that the gardens had a reasonably reliable and sufficient water source. If you would like to read more about the early days of the gardens before the excursion on May 22nd borrow this little publication from the Society's library.

EARLY A'SEA FAMILIES - THE WEBBS

There's a quaint single fronted cottage, coloured white with red roof, facing the River Esplanade just three doors south of Parker Street - you would have passed this many times. *It was first owned by the Webb family from Newtown, who always stayed there for the duration of the Xmas school holidays.*



The Webb's holiday cottage

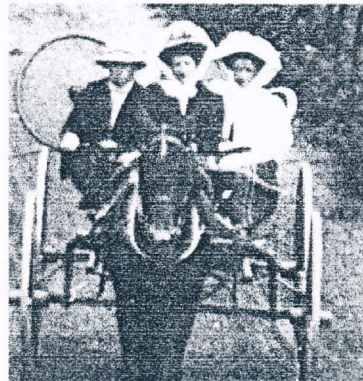
Jack Webb (born Kent 1875) came out from Hampshire to work in Geelong, where he met and married Harriet, one of the Hunt sisters from *Poplar Grove* at Pettavel. Harriet's elder sister Emma was the spouse of Geelong Dentist Sam Mawson - it was the Mawson's who introduced them to Anglesea. Jack often features in Sam's early photos of our area. He was an energetic rower, and was generally portrayed propelling a boatload of friends on the river. It's well worth calling to the Anglesea Historical Museum to see copies these excellent camera shots.

In 1912 (two years after Harriet's mother passed on), they purchased one of the original "Gladstone Estate" single acre blocks that traversed from the River Esplanade back to Tonge Street. Their timing was 'spot on' when in 1915 they contacted local builder Walter Harrison. He had just completed a job at Sichlau's *Bon Air* and was looking for more work. John Evans from *The Farm* carted all the material and furniture for their holiday abode from Geelong. *The total cost for the seven trips of his horse drawn lorry was just under £17.*

Their holiday cottage *Rivernook* was completed by August of that year. Documents show that the final cost for the building and furniture was just under £200. Luckily for the Webbs, during the period the cottage was under construction a significant development came to the growing township. Signs of increasing interest in the area later prompted Reuben Mousley (who had just returned after being wounded in W.W.1) to build a much needed General store to the East of the Hotel corner.

Jack, as well as running a gymnasium in Little Ryrie Street with his brother, was also a sports instructor at Geelong Grammar School. As a Captain, he used experience gained from the Aldershot Military Camp to help form the Cadet Corps. Just after their holiday cottage was completed he (then aged 40) chose patriotic duty, and headed off to WW1. with the 1st AIF. His name appears on the WW1 honour board at the Anglesea RSL.

A horse drawn vehicle was the popular transport of the day when they first came to Anglesea. Jack used a two wheeled gig to travel from Geelong across to the Grammar School, and a four wheeled buggy to bring his family to Anglesea - their faithful horse was named 'Flo'. Jack generally strapped a pushbike to the back of the buggy, to ride across the bridge to the store, or even down to his crayfish pot off the rocks at Roadknight. This saved him from the tiresome job of harnessing their horse, for his shorter trips around the township - good thinking!



Jack and Et. Webb with Winsome Gilliland returning to Geelong

The Webb's three children Alice, Richard and Molly, were well known and liked in Anglesea. They often competed in the New Years day river regatta. Richard was educated at Geelong Grammar, and Alice and Molly at The Hermitage.

In 1929 they subdivided their one acre block into two parts. The rear portion facing Tonge Street was sold to the newly formed Tennis Club. By 1942 a second cottage *Tanglin* was built on the southern side of their Esplanade frontage. This has since been altered and enlarged, and is still used by descendants of the Webb family when they holiday at Anglesea. □ *Lindsay Braden.*