

THE  
MID GIPPSLAND  
FAMILY HISTORICAL SOCIETY Inc.  
NEWSLETTER



*Morwell State School Choir  
(Commercial Road) winners  
of a State Choral Competition  
1934-35*

ON TRACK

JUNE 95

NO. 78

*OFFICE BEARERS FOR 1993-1994*

<i>PRESIDENT:</i>	<i>Dawn Cowley</i>
<i>VICE-PRESIDENT:</i>	<i>Karen Healy</i>
<i>SECRETARY:</i>	<i>Mavis Lynch</i>
<i>TREASURER:</i>	<i>Anne Pawley</i>
<i>LIBRARIAN:</i>	<i>Rosemary Wigg</i>
<i>LIBRARY ASSISTANTS:</i>	<i>Jenny Draper</i> <i>Bob Jones</i>
<i>PUBLICITY OFFICER:</i>	<i>Dot Needham</i>
<i>FUND RAISING:</i>	<i>Jean McNally</i> <i>Val Cooper</i>
<i>RESEARCH OFFICER:</i>	<i>Gay Rogers</i>
<i>CEMETERY RECORDS:</i>	<i>Eddie Tunn</i>
<i>SCHOOL RECORDS:</i>	<i>Anne Pawley</i>
<i>PUBLICATIONS OFFICER:</i>	<i>Rosemary Wigg</i>
<i>NEWSLETTER:</i>	<i>Claire Wood</i>
<i>SPECIAL PROJECTS:</i>	<i>Michelle Freeman</i>
<i>HOSTESS:</i>	<i>Glad Macreadie</i>

\*\*\*\*\*

*Meetings are held on the fourth Thursday of each month, except December, at the Moe City Library, Kirk St, Moe. The Library will open at 7:00 pm, with meetings starting at approximately 7:30 pm.*

\*\*\*\*\*

*There is a research fee of \$5 for any enquiries requiring research, with additional charges for large amounts of photocopying and/or postage. Please direct all enquiries to The Secretary, PO Box 767, Morwell, 3840, and mark the envelope "Research Query".*

\*\*\*\*\*

*Articles for this newsletter are accepted in good faith and, while every effort is made to ensure accuracy, the editor takes no responsibility for submitted items.*

## MEMBER'S PROFILE ELAINE JOHNSTON

I grew up in Melbourne during the Great Depression and World War II. After teacher training and a stint in Melbourne schools, I married and moved to Yallourn, where there was work, and moreover, Housing. We improved our housing over several moves to Yallourn North, Yallourn again, Morwell (where we built our own home), and now at Hazelwood North where we again built with our own hands.

Our family of 5 children kept me busy, and when they were young, I enjoyed being mother, homemaker, gardener, child nurse, seamstress, wife, cook, cleaner, etc. etc.

As the youngest became independent and at school, I returned to teaching part-time for 9 years, and the older children gradually left the Latrobe Valley for tertiary education.

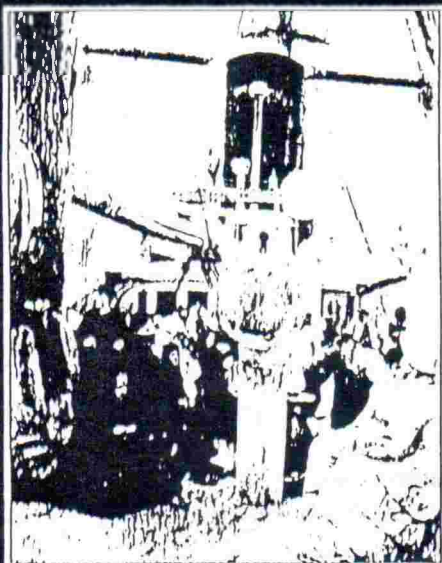
My parents both wrote their life time memories, though my father's story had more information, in that each branch of the family contributed a chapter. I accepted these stories and read them with interest, but never thought of asking more questions until it was too late. We knew our father's Murdoch cousins fairly well, but Dad never talked in the same way about his maternal grandparents and their children, or his cousins whose surname was Allan. The name Allan has been used in our family as a given name through four generations since then. This family is the main interest of my research.

William Pitt Harvey Allan, son of William Allan and Margaret (nee Harvey) came from Edinburgh to work as an engine driver in the goldfields of Timor, Dunolly and Carisbrook. I have been unable to trace his arrival through the shipping records. In 1867, at Dunolly, he married Frederica Watts from Kensington, London, whose arrival in Australia has also eluded me. I have found both Allan and Watts are both fairly common names, but thankfully not so common as my present surname.

# Coming South

Victorian Archives of Immigration 1839-1923

A Guide



Public Record Office Victoria

**D**ocuments which show how and when people migrated to Victoria in the nineteenth and early twentieth centuries are one of the rich sources for family history research held by the Public Record Office. This guide is primarily designed for the family historian but it should also prove a useful starting point for those researching other aspects of immigration.

The guide describes records created between 1839 and 1923. It outlines the government's role in immigration and explains what records needed to be kept to document these activities. It indicates where the records can be used and gives a step by step guide to tracing the arrival of an ancestor. The records themselves are then listed and briefly described.

Mail order

Macbeth Genealogical Books

Phone (03) 598 0135

Fax (03) 598 0365

Visa, Bankcard & Mastercard accepted

Information Victoria

318 Little Bourke Street

Melbourne 3000

Phone (03) 651 4100

Fax (03) 651 4111

Toll Free 008 136 762

Counter sales

Laverton Search Room

57 Cherry Lane

Laverton North 3026

(Melway 51, A2)

Phone (03) 369 9665

Toll free 1 800 627 152

(outside 03 area only)

City Search Room

4th floor, Information Victoria Centre

318 Little Bourke Street

Melbourne 3000

Phone (03) 651 4111

Ballarat Search Room

Level 1, State Public Offices

Cnr Doveton and Mair Streets

Ballarat 3350

Phone (053) 336 611

Information Victoria

Ground Floor, 318 Little Bourke Street

Melbourne 3000

Phone (03) 651 4100

Toll Free 008 136 762

Genealogical Society of Victoria

252 Swanston Street

Melbourne 3000

Phone (03) 663 7033

Cost \$8.95

(plus postage and handling)



## SMITH FAMILY REUNION

By Glad Macreadie

On the 9th January last, we held a family reunion - booklaunch at the Darnum Public Hall, for the descendants of John Smith & Elizabeth Stoddart. Their 8 children were all born at Tarraville from 1857-1872.

Elizabeth died in 1874 & is buried at Alberton, while John died in 1906 and is buried at Yarragon. We are mainly a Gippsland & Metropolitan Melbourne family, but are scattered throughout every state of Australia.

It was a very successful day, with about 200 people attending, including Michael & Paula Cairns Smith from Cheltenham in Gloucestershire. We knew Joan Brookman had 2 younger brothers, but didn't know their names. It was a lovely surprise to get a letter last October from Paula, saying they would be visiting her brother in Canberra in January & would like to contact us while here. Don wrote quickly and said the reunion would be on while they were with her brother.

We had received family charts from Joan's son Charles, via Paula's 1st letter, so it was quite a surprise for Michael & Paula to find their information in the book.

The book, written by my husband Don has 138 pages and is magazine size. The first part is about Scotland covering John and Elizabeth's ancestry. John was from Kilmarnock & Elizabeth from Mellerstain, a castle where her family worked. The second part is about their descendants (fast approaching 700) with a small paragraph about each one, which includes me. There are many photographs, maps and family trees for every branch who married and had children, right down to the present day.

The book was launched by Arthur Hewson, a Warragul Shire Councillor and ex-member of both houses of Parliament His wife is Ellen Nicholas, my grandmother Smith's niece. Arthur is also my eldest sister's brother-in-law.

It was truly a wonderful day, made even more wonderful with Paula and Michael attending.

# VICTORIAN CEMETERY RESEARCH

These notes were prepared to accompany a presentation by Jo FERGIJSON at the First Victorian State Family History Conference, Melbourne Town Hall on 7 May 1995. Submitted by Anne Pawley & Rosemary Wigg

## 1. Historical background

Sugazio, Celestina (ed). *Cemeteries: Our heritage*. National Trust of Australia (Victoria). 1993, 184 pp.

Nicol, Robert. *At the end of the road: Government, society and the disposal of human remains in the nineteenth and twentieth centuries*. Allen & Unwin, NSW, 1994, xvi & 464 pp.

## 2. Starting point

Brown, P, Meadley, D. & Morgan, M. (eds). *Family and local history sources in Victoria*, 6th edition, Custodians of Records, Blackburn, 1994, 111 pp, \$9.00.

## 3. Health and Community Services Department

\* The Cemeteries and Crematoria Section, Health and Community Services Department First floor, 115 Victoria Parade, East Melbourne. Victoria 3000, telephone (03) 6168079 or 616 7754 or toll free (008) 034280.

*Listing of names and addresses of Victorian cemetery trust secretaries - \$16.00.*

## 4. War Graves Commission

\* War Graves Commission Victorian Office, Necropolis, Springvale, Vic. Telephone (03) 5471991.

## 5. Cemetery location

\* Map shop, Information Victoria, 318 Little Bourke Street, Melbourne.

\* *Melway greater Melbourne street directory* (1994).

## VICTORIAN CEMETERY RESEARCH (cont)

### 5. Cemetery location (cont)

- *Esmap of Melbourne outer Melbourne directory: CFA regions 8,13 and 14* (Country Fire Authority Mapping Association Inc. and Survey and Mapping, 1st edn, December 1991, \$995).
- *Country Fire Authority 224 regions - Comprehensive 1:100 000 scale Map and Rural Directory incorporating 1:25 000 scale township enlargements* (\$20.00- \$40.00 Ea).

### 6. Victorian placenames

Blake, L. *Place names of Victoria*, microfiche edition, McBeth Genealogical Books, Hampton, 1987, fiche, \$7.00.

Victorian Place Names. *Register of place names in Victoria*, 4th edn. Surveyor-General's Office, Department of Crown Lands & Survey for the Place Names Committee, (Melbourne) 1983.

Whitworth, R P (comp). *Bailliere's Victorian gazetteer and road guide containing the most recent and accurate information as to every place in the colony, 1865, 1870 and 1879*, microfiche edition, Library Council of Victoria, Melbourne, 1986, 18 fiche, \$30.00.

### 7. Indexes: memorial transcriptions and burial registers

Killion, Martyn C H & Garnsey, Heather E (eds). *Cemeteries in Australia: A register of transcripts*, Australasian Federation of Family History Organisations, Sydney, 1994, 177 pages, \$9.95.

Australian Institute of *AIOS cemetery series 1 & cemetery transcriptions series 2*, 1993. Genealogical Studies, 279 fiche, \$300.00.

Hooper, Linley. *The microfilm collection of the Genealogical Society of Victoria Library*, publication number 1, Genealogical Society of Victoria, 1994

## VICTORIAN CEMETERY RESEARCH (cont)

### Indexes: memorial transcriptions and burial registers (cont)

Webster, Judy. *Specialist indexes in Australia: A genealogist's guide. 1994 edition*, author, Salisbury Queensland, 1994, \$12.00.

Baker, Wendy & McBeth, Sue. *Family and local history indexes in Victoria*, McBeth Genealogical Books, Hampton, 1988, 80 pp.

### 8. AGCI (Australian Genealogical Computer Index)

\* AGCI, c/- Society of Australian Genealogists, 120 Kent Street, Sydney, NSW 2000. (phone 02 247 3953)

### 9. Cemetery research

Church of Jesus Christ of Latter-day-Saints. *Family history library catalogue*, author, Utah, 1993, cdrom (available for purchase)

RHSV Royal Historical Society of Victoria library catalogue, 1988, microfiche, \$36.00.

Burnstein, Susan et al (eds). *Directory of archives in Australia*, Australian Society of Archivists, 1992, 527 pp., \$25.00 (available Australian Society of Archivists, PO Box 83, O'Connor, ACT 2061.)

### 10. Sample cemetery guides and histories

Barracrough, Linda & Squires, Debra. *East Gippsland cemeteries: a guide for the genealogist*. Kapana Press, Bairnsdale, 1984, 64 pp.

Rogers, J G & Helyars, Nelly. *Lonely graves of the Gippsland goldfields and greater Gippsland*. J. G. Rogers, PO Box 866, Moe, 184 pages, \$ 25.00.

Davidson, Jan & Doxford, Helen. *Grave reflections: Volume 1: An alphabetical listing of the burial sites in the central goldfields area of Victoria, with a selection of tombstones of interest*. authors, PO Box 92, Forest Hill, Victoria, 3131, no date [1984], 102 pp. (continued next issue)



NEW ZEALAND BIRTH DEATH  
& MARRIAGE RECORDS

Searches done  
Reasonable Rates

also 1978, 1979, 1980  
Victorian  
Electoral Rolls

Send SAE to :

Sally Shine  
P. O. Box 276  
Moe 3825

The latest edition  
of  
Index to  
Extra Birth, Death  
and  
Marriage Certificates  
no. 13  
is now available.

Contact Dawn Cowley  
'Takamuna'  
27 Shanahan Pde  
Newborough 3825.



# Roll of Honour

*"They held our hearts and walked with us awhile"*

Cpl F W ALAMINON — Yallourn  
 LAC C P ANGUS — Yallourn  
 Pte J F ANGILO — High Ten-  
 Man  
 Wm G H BERTWICK — Yallourn  
 Sgt G L BISHOP — Kiewa  
 Pte J G BISHOP — Yallourn  
 Cpl J P BLOEN — Yallourn  
 Pte R N BLOOMFIELD — South-  
 Western  
 Wm A S BODD — Yarraville  
 Sgt D CANEY — North-Eastern  
 Pte R R CANTER — P.P. 13 Bond  
 Office  
 Pte J A COLLINS — Metro Cons  
 Accts.  
 Pte R R COWLING — Bendigo  
 Pte J CHILLY — Yallourn  
 Pte G DAMM — Kiewa  
 Pte J S DAMMERS — Yal-  
 lourn  
 Pte J S DAMMERS — North-  
 Eastern  
 Pte B A DAVIES — Metro Cons  
 Accts.  
 Sgt H W DICKSON — Richmond  
 LAC R J EATON — Kiewa  
 Cpl P E EDWARDS — Yallourn  
 Lieut R P FAHRELLY — Kiewa  
 Pte H H FEZICHERCE — Yal-  
 lourn  
 P/O J L G GIBBERT — Ballarat  
 Sgt R A GOULD — Cons Accts.  
 Lieut A J GRIFFITHS — P.P. 1  
 Bond Office  
 Pte P V HAAC — Dept Sales 1104  
 P/O K I HALEY — Geelong 42313  
 W G J C HIGGINS — Yarraville  
 Pte W P B HIGGINS — Yallourn  
 P/O J HIGGINS — Yarraville  
 Sgt L A KERRIEY — Yallourn  
 Lieut R E KERR — Ballarat  
 Gun R C LANCASTER — Geelong  
 P/Sgt M P LAY — Richmond  
 W G L M LOTJUS — Accounts,  
 H.O.  
 W G J J LOIR — Metro, Depot  
 No. 1



Pte J LYON — Yallourn  
 S/Ldr D. W. McCORMACK — D.F.C.  
 and Bar — Sub. Eng. H.O.  
 LAC D. MacDONALD — Richmond  
 Top D C McKEEVER — Metro  
 Cons Accts.  
 P/Sgt R M McLAY — Distribution  
 Div.  
 P/O G E McSAUGERTON — Dis-  
 tribution Div.  
 Pte C J MAISING — Metro  
 Constn.  
 Sgt W J McTHERELL — Metro  
 Stores  
 E R Art W R McPITT — New-  
 port  
 Pte K MOORE — Richmond  
 P/O P T GRUBBELL — Account-  
 ing  
 A S/Ldr A G OXLADE — Metro  
 Cons Accts.  
 Div R W PRITCHETT — Yallourn  
 Cpl J M READ — Geelong  
 E R Art J RICHLEY — Yallourn  
 Cpl R J H RICHIE — Foot-  
 scay  
 Major C A RUFEN — Geelong  
 P/O B V C SHEPHERD — South-  
 Eastern  
 Pte S G SKINNER — Yallourn  
 Sgt S W SMITHurst — Eastern  
 Metropolitan  
 Pte P R SPENCLOVE — Metro  
 Public Lig.  
 LAC W E STONE — Sub. Mels.  
 Major R G THREWITH — Metro  
 Cons Eng.  
 Gun R H TURNER — Yallourn  
 P/O P K TULLER — North-East-  
 ern  
 P/O K WARREN — Admin. H.O.  
 A/Cpl W WHITEHEAD — Eastern  
 Metropolitan  
 P/Sgt G L WILLIN — Footscay  
 P/O A P WILLIAMS — Gippsland  
 LAC W L WILLIAMS — Richmond

THE PINNACLE OF SACRIFICE

# Right of Burial

A 'Right of Burial' is the right acquired when a grave is "purchased". When you "purchase" a grave, you do not "own" that grave. Rather, you have a licence (or right) to use the grave to bury deceased persons. The number of persons who may be buried in a grave varies according to cemetery policy.

Some cemeteries place a tenure on pre-purchased, unused graves. In most cases, the tenure in Victoria is for 25 years. This means that if no burial occurs in the grave within 25 years from the date of purchase, the Right of Burial will revert to the cemetery by law. However, if a burial in the grave occurs before the tenure period expires, the Right of Burial remains with the purchaser (or descendant(s)) forever.

In addition, when a grave is purchased and immediately used, there is no tenure. The right to use the grave remains with the purchaser and their descendants forever.



If you would like more information, please feel free to contact your local branch on 13 1363.

**John Allison/Monkhouse**  
AUSTRALIAN OWNED FOR FIVE GENERATIONS

The list opposite is taken from The S.E.C. Magazine 12th Dec. 1945. It is a list of SECV employees who enlisted in the Armed Services and who were killed during World War II.

## NEWSLETTER ADVERTISING RATES

Advertising will be accepted for this newsletter at the following rates:

Full page .... \$10  
Half page .... \$5  
Quarter page . \$2.50

## IRISH DATABASE

Entries are now being taken for a new database, due for release later this year. This database will help to make that vital connection with others researching the same name / area in Ireland.

Just send details of your research, including name, age, d.o.b. (if known) period, county/parish/town etc. for their inclusion to:

**Irish Database**  
**P.O. Box 271**  
**NUNAWADING VIC3131**  
**AUSTRALIA**

(Please print information and include a stamped addressed envelope and two local stamps for notification about the release of the database)

## Annual General Meeting

Members of the Mid-Gippsland Family History Society Inc. are hereby notified that the ANNUAL GENERAL MEETING OF THE SOCIETY will be held on Thursday 20th July 1995 in the Moe Library at 7:30pm.

As all Office-Bearer positions will become vacant, an election for Office-Bearers will take place. Nomination forms are available from the Secretary. Nominations close July 14th, 1995.

(Please give thought to accepting office in the Society for without member participation, the Society will stagnate or cease to function. We all have talents to share with others.)

\*\*\*\*\*

### SEMINAR

SATURDAY SEPTEMBER 9th  
9:30am - 4:00pm

SPEAKERS: Florence Chuk on Assisted Immigration  
Ada Ackerley, "Cut off without a shilling"  
David Thompson on Scottish research  
Judy Bilszta on RHSV resources of use to family historians

MOE PRESBYTERIAN CHURCH HALL

\*\*\*\*\*



Please address all correspondence to: Mid Gippsland Family History Society, Inc., P.O.Box 767, Honnell, Vic 3060.