



COMMITTEE

President Dawn Cowley
Vice President Vicki Evans
Treasurer Rod Donelly
Secretary Peter McNab
Web Florence Butcher
Research Vaughan Knox
& Library Brian Knox
Hostess Vicki Evans
Ordinary Wes Halkett

CONTACT US

Web: <http://home.vicnet.net.au/~mgfhs>
Email: mgfhs.inc@gmail.com
or Post to
The Secretary,
PO Box 767, Morwell,
Victoria 3840, Australia

ON TRACK

RURAL ALLOTMENTS AND MAPPING

THIS issue we have a number of articles about mapping and about crown land released in the 19th century —with a genealogical flavour.

OUR FUTURE HOME

OUR society has a longstanding association with the Moe branch of the Latrobe City Library Service. As mentioned last edition, the Moe library is moving to new premises. The council has decided that the existing building will be a Community Group Hub. Although we have reservations, we have tendered an Expression of Interest in becoming a tenant. There are not many suitable venues for us in Moe, but the committee is considering alternatives, should the need arise.

SALVĒ! QUID AGIS?

(Welcome! How are you?) Having trouble with names in Latin records? See the article suggested by Wes

INSIDE THIS ISSUE

The search for DB Morgan 2
Mapping your Ancestors 4
Adding a Ground Overlay
to Google Earth 5
The 2015 Genea-Logies 6
Latin names in Irish Registers .. 7
Members' Interests 8
Latin names in Parish
Registers 6
Trove Citations 10
Expired Burial Plots 13
Any opinions expressed herein are
those of the contributors.

SOURCE MATERIAL

- Vaughan Knox
- Dawn Cowley
- Florence Butcher
- Vicki Evans
- Peter McNab
- Wes Halkett



TORRENS TITLE

The Torrens title system was introduced first in South Australia. In Victoria, all land that was subdivided after 2nd of October 1862 was to come under the Real Property Act of 1862.

Under the Torrens system, (1) Land Titles are registered accurately and completely reflecting the current ownership. (2) Ownership and other interests do not have to be proved by long complicated documents, such as title deeds. (3) A Government guarantee provides for compensation to a person who suffers loss of land or a registered interest.

These days titles are held electronically.

WERE YOUR ANCESTORS ON THE LAND?

DURING the 1840's and 1850's there was an increasing demand from the public for the release and sale of crown land controlled by squatters. The government enacted several laws to manage this and reported the sales in the Government Gazette. Local newspapers also picked up the results of these sales.

The Land Office maintained maps which summarised the holdings. Many of these have the names of the landholders as well as dimensions and other references.

So there are quite a few sources for establishing the whereabouts of your rural Victorian ancestors●

THE SEARCH FOR D.B. MORGAN

MR MORGAN is a real person, selected at random. He was a farmer in Gippsland. Searching Trove for 'Morgan "Sale Local Land Board"' revealed he was interested in land at Winnindoo in 1874, but failed to get it. (<http://nla.gov.au/nla.news-article61909338>). A search for 'Morgan Gippsland "board of land and works" surveyor -Clunes' returned 112 hits including <http://nla.gov.au/nla.news-article61492978>:

The following applications have been approved by the Board of Land and Works :—
H. G. Campbell, 219a 1r 3p, Glencoe ; M. M'Namara, 150a, Toongabbie ; D. B. Morgan, 120a, Toongabbie ; Mary Duke, 100a, Toongabbie ; T. O'Brien, 320a, Hazlewood ; E. Ball- 46a, Toongabbie ; A. M'Inness, 90a 2r 9p, Stratford ; R. Galloway, 80a Or 18p, Stratford ; J. Sothorn, 20a, Maffra ; M. Killen, 80, Wurruk Wurruk ; T. Cavanagh, 8a 1r 38p, Stratford.

Also from Trove, I found the map of Toongabbie was available from the Centre for Gippsland Studies in Churchill. The map shows he had four holdings in Toongabbie North, one of which is mentioned above.

The Google Earth image opposite shows where this parcel of land was. The present town of Toongabbie is near the bottom edge of the overlaid parish map and Cowwarr near the top. The adjoining maps are Winnindoo to the East, Toongabbie South (now Glengarry) to the South and Dawson to the North.

The Morgan families owned five blocks in the district totalling over 500 acres, putting them in the top 10. One on the south edge of the township, one on the south bank of the Thomson River to the North and the others at the pin on the map. The largest landholders were the O'Briens and the Jones with over 2000 acres

●

CENTRE FOR GIPPSLAND STUDIES

THE CENTRE for Gippsland Studies Collection (CGS) is a research centre within Federation University Australia's Faculty of Education and Arts. An associated resource collection supports research into, and interpretation of, not only the Gippsland region, but also of rural and regional Australia. Present collection strengths include the history, literature, Aboriginal cultures, education, land use, environment and natural resources, and social structure of Gippsland. This collection is available for use within the Centre.

The Centre's holdings can be

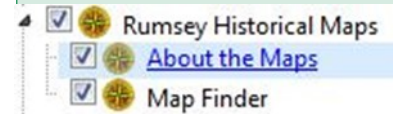
identified through FedUni Library QuickSearch and digitised images can be accessed through Trove and FedUni ResearchOnline. However, archival materials are not available digitally.

Future access via trove may be curtailed if the Government implements its "Productivity Bonus"

Check <https://federation.edu.au/library/resources/collections/centre-for-gippsland-studies> for opening hours or contact Kay Steel for an appointment on 1300 552 567 or libanswers.federation.edu.au ●

USING RUMSEY HISTORICAL MAPS

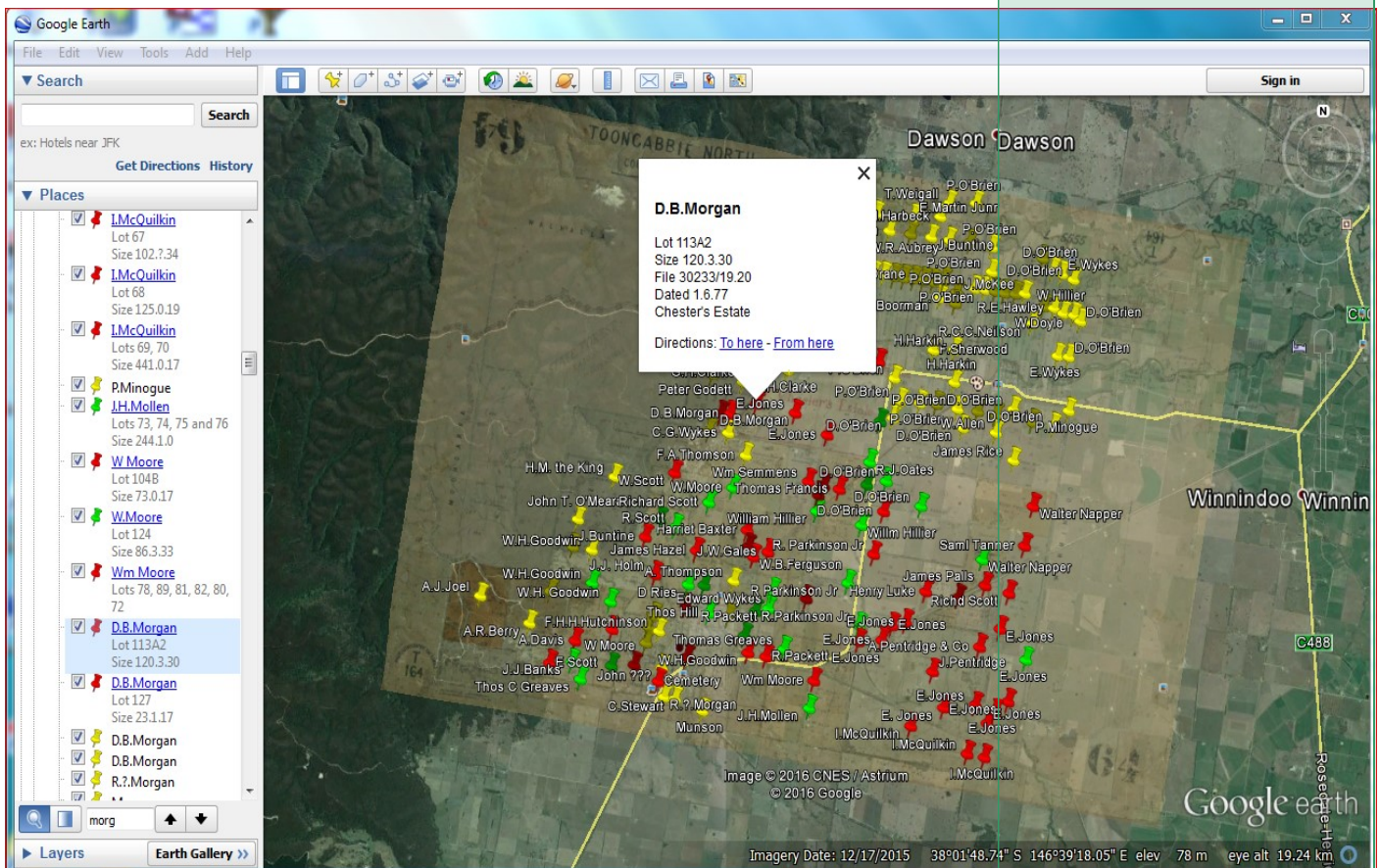
These are maps already loaded in Google Maps On the Layers Tab Scroll to and open Gallery



Read About the Maps Then continue on to the web site. This site is best explored by yourself as it has many facets, both easy and complicated. Start with Help >> Help Center >> FAQ >> Downloading and Printing Selecting Map Finder shows all the Maps that are currently available to use as an overlay There are some for Australia and New Zealand as well. Have a look all over the world. You'll be surprised at some of the maps. If the maps are too

GETTING MORE FROM GOOGLE EARTH

Over the page, we take a look at Google Earth and how it can be used with your own maps and locations from your family tree.



MGFHS MAP INDEXES

The Society is considering publishing a series of historical map indexes.

The index would relate the owners name to each allotment as well as other details from the old parish maps. In addition, the location would be provided as the latitude and longitude with a pin.

The index would be in the form of a Google Earth place file.

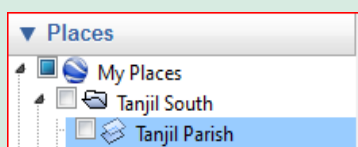
Volunteers needed!

MANAGING PLACES IN GOOGLE EARTH

Earth remembers locations filed under the folder “My Places” and discards those under “Temporary Places”.

Earth gives you the option to save temporary places when you shut down, or you can move what you want by dragging it from one to the other.

The checkbox next to the name controls whether the item is visible.



If you have a lot of items, it is a good idea to group them. First you make a folder then drag items into it.

Select “My Places” then from the menu Add-Folder. From there it is straight forward. The new folder appears at the bottom, but you can drag wherever you want. Open and close with a double click.

MAPPING YOUR ANCESTORS—GOOGLE EARTH

NOW that you have found where you ancestor lived, you may want to visit the spot or learn more about the locality. Google Earth is an interesting way to do this.

At our February meeting, we learnt one way we can put Google Earth to use.: with Overlays.

An Overlay is an image, in this case a historical map. See the article [How to Add a Ground Overlay](#).

Depending on how you set the Transparency, you will be able to see the original Google Earth terrain, the historical map or both.

What can you do with Overlays?

- Browse towns that have disappeared, like Goldmining towns or Yallourn
- Browse streets that have been removed, such as on the London waterside
- Place and save pins, text or paths on the Earth corresponding to items on the historical map.
- Use the latitude & longitude to find the exact spot on the ground.
- Best of all you can view them any time or share them with friends.●

WHERE TO FIND MAPS

AniMap County Boundary Software: <http://goldbug.com/animap/>

A-Z Old to New Street names: http://www.maps.thehunthouse.com/Streets/Old_to_New_London_Street_Name_Changes.htm (Underscore characters used to separate words)

Charles Booth Online Archive: <http://booth.lse.ac.uk/>

Colourful Family Maps to Enhance Your Research: <https://progenygenealogy.com/products/family-maps.aspx>

David and Charles One-inch Old Series maps: <http://www.david-archer-maps.co.uk/content/home>

Dr. John Snow's map of the 1854 London cholera outbreak: <https://www.udel.edu/johnmack/frec682/cholera/>

Explore Horwood's Plan – Romantic London: <http://www.romanticlondon.org/explore-horwoods-plan/>

Great Britain, Atlas and Index of Parish Registers (These are Phillimore Maps): <http://search.ancestry.co.uk/search/db.aspx?dbid=8830>

Greenwood's Map of London 1827: <http://users.bathspa.ac.uk/greenwood/imagemap.html>

Centennia Historical Atlas: <http://www.clockwk.com/>

LOST LONDON STREETS: <http://web.archive.org/web/20050811073441/&http://members.aol.com/WHall95037/london.html>

Map Gallery: <http://www.mernick.org.uk/elhs/mapgallery.htm>

MAPCO London and Environs Maps and Views: <http://mapco.net/london.htm>

Mapping London: <http://mappinglondon.co.uk/>

MORE links can be found later in the newsletter

HOW TO ADD A GROUND OVERLAY TO GOOGLE EARTH

First, find the general area that your historical map covers.

Second, click on the terrain to bring it into focus. The shortcut keys will now work.

Third, zoom out with the slider (or use the - key) so that the image extends wider and taller than your map.

Fourth, select View-Reset-Tilt and Compass from the menu (or press the R key until the terrain stops moving). This gives you a view from directly overhead.

Fifth, remembering where your historical map image is on your device, choose Add-Image Overlay from the menu. A dialog box appears. Click the Browse button to find your image.

After you open the image, it will cover part of the terrain. The next

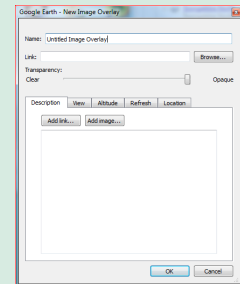


Image Overlay Dialog

“Now comes the awkward bit: aligning the image with the terrain”

step is to align the overlay but first, while the dialog is still open, drag the Transparency slider about half way between clear and opaque.

Click OK or press Enter and your overlay is added to the list of objects in the Places pane. If you have not changed its name yet, it will be called “Untitled Image Overlay”. At any time you can select this place and Earth will take you to the overlay. Notice the new icon associated with the overlay in the Places pane

To make changes to the overlay, like its name, size, location or orientation, select the object in the list, RIGHT_CLICK it and select Properties.

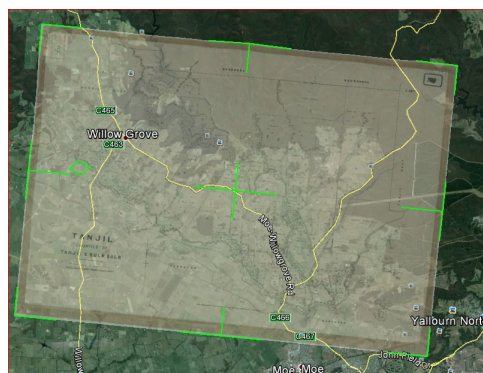
Now comes the awkward bit: aligning the image with the terrain. If you can see the properties dialog, then you will also see the green frames and centre of the overlay. You might need to move the dialog a bit to the left.

Grab the frames to stretch or shrink the image. Grab the centre to move it around.

I have rotated the image because the old map was aligned to magnetic north. Grab the diamond near the western edge to rotate it.

These movements are recorded on the Location tab of the dialog box. If you know the alignment in degrees, you can enter it here directly. A clockwise rotation is entered as a negative number.

After you enter a name and a description, you are done.●



MANAGING PLACES IN GOOGLE EARTH

****PART TWO****

Any items listed in the Places pane can be saved to a file for sending to a friend or just for archiving.

In Part one opposite, we discussed adding a folder. By grouping relevant material under a single folder, you can save a number of items in the same file.

Select the folder under My Places with a left-click.

Right-click the folder then select “Save Place As...”. Earth prompts you to save it using the folder name and the extension kmz.

In future, you can open this file and Earth will display all its contents just as you saved them., including overlays, pins etc.



SUGGESTIONS FOR THE 2016 GENEALOGIES

Dawn needs an award herself for inventing the name of the awards and working out the award categories for 2015.

The Genea-logie quiz was based on similar quizzes held by other groups.

Having completed the 2015 quiz, members were very excited, looking forward to the next round in 2016.

But there was general agreement that half of the categories should be changed.

Some suggestions were: photos of male ancestors, or the family with the most twins.

If you have any suggestions for new categories, please let us know.

The prize pool for the Genea-Logies includes both edible and trivial items.

All members are welcome to participate, whether they can come to the meetings or not, since the categories are published in advance and evidence could be submitted by a proxy.

EXPERIENCE WITH OVERLAYS IN GOOGLE EARTH

OVERLAYS don't work well with the 3D view. The first time I used overlays the 3D buildings were drawn on top of the overlay. Deselecting 3D buildings fixed this.

The historical mapmakers may have aligned their map with magnetic north. Be prepared to rotate your overlay about -10° .

Despite matching Earth well in places, there may be mismatches in others. This may be because the historical maps are less accurate or were made with a different projection to Google Earth. Cut your overlay into smaller pieces and align them separately.●

THE GENEALOGIES

THE END of 2015 was celebrated with a quiz again put together by Dawn Cowley. The theme was something of a genealogical lucky dip: members had the chance of matching their direct ancestors' key dates with historical events. We had two months to get our documents together since evidence such as birth, death and marriage certificates or newspaper articles were required.

The overall winner of the coveted Genea-logie was Vicki Evans, Sandra Dumble came a close second, decided by a count back. Here is a photo of Vicki receiving the award from Dawn



Everyone agreed that the Genea-Logies were a success and should be held again in 2016, with perhaps a few new award categories. See the side bar.

LATIN NAMES IN PARISH RECORDS

WITH THE RELEASE of many Irish genealogical records, the question is often asked, “how do I interpret the names?”. Latin was used by the Irish church for such records, so it is useful to understand a little about Latin. (See the side bar for a brief history of the language.)

The first complication is the priests had to translate the Irish Christian names into Latin; Surnames were never translated but were written according to the local spelling, in English.

Lots of Latin words end in *-us* or *-a* and this applies to names as well, although other endings are used. Names ending in *-us* are normally male and those ending in *-a* are normally female. Without too much difficulty you can often deduce the matching Irish / English names. For example *Franciscus* is male and is used for Francis but also for Frank while *Francisca* is female and is used for Frances.

Many Latin names appear to have little resemblance to their Irish equivalents. You can see a comprehensive explanation and list of

WHERE DID LATIN COME FROM?

Latin was the native language of the people surrounding modern day Rome. The Latini tribe established Rome, by legend, in 753BC.

Through luck, trade and mostly conquest, the language spread progressively throughout the Mediterranean, southern Europe, England, northern Africa and eastwards through Turkey.

“with a bit of insight, you can decode your ancestors’ names and work out their relationships in Parish records”

names at [Latin Names in English](http://www.from-ireland.net/irish-names/latin-names-in-english/) (www.from-ireland.net/irish-names/latin-names-in-english/) but a few of the less obvious ones are listed below.

The second complication is how English and Latin names sometimes have different first letters to English.

For example John is generally *Johannes* but may be written *Iohannes*.

Or when you see **Gu** at the start of a name, replace it in your mind with **W** as in *Gualterus* which means Walter

The third complication is how relationships are described. By this I mean how the priest translated “Frank the son of John” or “John married Anne”.

In these cases, the ending of the second name will change. The ‘rules’ describing the changes are extensive. There are some common patterns called declensions, which Latin stu-

dents have learnt for centuries, but you can get by without knowing them. Just knowing that the endings can change will help.

Here are some examples. It helps to know that in Latin “son” is *filius*, “daughter” is *filia* and “married” is *nupsit*.

Anthonium, filius Edwardi
Anthony, son of Edward
(Normal form *Edwardus*)

Maria, filia Mariae
Mary, daughter of Mary
(Normal form *Maria*)

Johannes nupsit Annam
John married Anne
(Normal form *Anna*)

So once again with a bit of insight, you can decode your ancestors’ names and work out their relationships in Parish records.

The Roman Empire disintegrated in western Europe, in 476AD.

By 700AD Latin had become a dead language.

Few people in the west outside of monasteries were able to read. Monks, particularly in Ireland, read and wrote classical Latin and preserved ancient texts as well as church documents.

The Latin language has survived for over twenty-seven hundred years in one form or another.

LATIN AND ROME

Modern Rome is the capital of the Lazio region of Italy. Lazio comes from *Latium* after the Latini people.

WE have listed some Latin equivalents later in the newsletter

WINDOWS SHORTCUTS

Software supplier CompuClever compiled a list of top 5 Windows key shortcuts that work across all versions of Windows: They use the Windows Key in combination with other keys.



Windows key +D: Display and hide the desktop
Windows key+E: Open File Explorer
Windows key+L: Lock your PC or switch accounts
Windows key+F1: Displays Windows Help

Give them a try and you will be amazed at how easy it is to accomplish common tasks that would otherwise require a lot more effort.

Then for Windows 8 or 10, there is Windows key +X which opens the Quick Link-menu. (Also try right-clicking the Windows Start Button.) This menu saves you from searching or using Cortana for common tools. Each tool can be opened with a single key stroke.

Here are some of them.
W: Check your network
D: Show/hide the Desktop
U: Shut down
R: Run
S: Search
P: Control Panel
T: Task Manager
E: File Explorer
D: Command Prompt

These shortcuts are not always shown on-screen.

2015 GENEALOGIE AWARD CATEGORIES

The 2015 Genea-Logie award categories were

1. THE LONGEVITY AWARD – Your ancestor with the longest life span.
2. THE BOX BROWNIE AWARD – Photos of the most consecutive generations of your maternal line.
3. THE FEDERATION AWARD – Direct ancestor born, married or died nearest to January 1st 1901.
4. THE GENERATION GAP AWARD – Oldest male to have fathered a child.
5. THE VICTORIA DAY AWARD - Direct ancestor born, married or died nearest to July 1st 1851.
6. THE BALL AND CHAIN AWARD – Couple with the most enduring marriage.
7. THE INVESTIGATION AWARD - Earliest inquest papers for an ancestor.
8. THE RANDY RABBIT AWARD – Ancestor couple who produced the most children.
9. THE NEWSHOUND AWARD - earliest newspaper item which involves an ancestor in law court action as plaintiff or accuser.
10. THE ANZAC AWARD – Armed services enlistment closest to the declaration of peace on November 11th, 1918

RECENT ADDITIONS TO MEMBERS' INTERESTS

Contact us at mgfhs.inc@gmail.com for details

Surname	Place	Region	Country	Period
RUDD	Victoria		Australia	any
JONES	Fitzroy, Preston, Willow	Victoria	Australia	
DEAN	Bulla, Eastern Creek	Victoria	Australia	
DEAN	Moe, Willow Grove	Victoria	Australia	
OWENS	Gormandale, Jeeralang,	Victoria	Australia	
SELLENS	Clarence Plains	Tasmania	Australia	
SELLENS	Mt Egerton	Victoria	Australia	
SELLENS	Traralgon, Maffra	Victoria	Australia	
MARTIN	Isle of Skye		Scotland	
MARTIN	Geelong area	Victoria	Australia	
POLWARTH	East Lothian		Scotland	
POLWARTH	Budgeree, Geelong ar-	Vic	Australia	
TURNER	Newfoundland		Canada	
TURNER	Morwell, Alexandra	Vic	Australia	
SMITH	Middlesex		UK	1830's
MCCARTNEY	Fife		Scotland	1800-1850
DERBY	Westmeath		Eire	1800-1850
GAYNOR	Hindustan		India	1750-1850
WALLACE	London		UK	1800-1850
ATKINSON	Cumberland		UK	1750-1850
MARTIN	Clare		Eire	1750-1850
SINCLAIR	Perthshire		UK	1750-1850
GREENLEES	Scotland		UK	1750-1880
BELTS	Suffolk, Norfolk		UK	1750-1880
DAVEY	Sth Australia		AUS	1750-1900
DAVEY	Cornwall		UK	1750-1900
MORRISON	South Australia		AUS	1750-1900
MORRISON	Cornwall		UK	1750-1900
HARDY	Suffolk		UK	1800-1900
REYNOLDS	Suffolk		UK	1800-1900
HARDY	Gippsland, Vic		Australia	1800-1900
REYNOLDS	Gippsland, Vic		Australia	1800-1900

A GENEALOGICAL RECORD?

Glynn Wolfe was born on 1908 Jul 25 and died 1997 Jun 10. He was a baptist minister in Blythe, California, who had 29 consecutive monogamous marriages. He made the Guinness Book of Records, and married wife number 29, Linda Lou Essex, from Anderson, Indiana the most married woman, as a stunt for a British documentary. Both were not just listed for most marriages, but for most divorces as well. Linda Essex was married 23 times to 15 different men; she divorced and then remarried some of them. Glyn Wolfe divorced all but his last wife, Linda Essex. Wikipedia has a list of all 29 wives.

MORE MAPS

MOTCO - Image Database: <http://www.motco.com/map/>

Mr. Weller's Knowledge of London: <http://www.lang.nagoya-u.ac.jp/~matsuoka/London.html#Geographical>

Old Maps of Historic Liverpool: <http://historic-liverpool.co.uk/old-maps-of-liverpool>

Old Maps Online: <http://www.oldmapsonline.org/>

Old-Maps - the online repository of historic maps: <https://www.old-maps.co.uk/#/Map/574087/199194/10/100166>

Ordnance Survey Maps: <http://maps.nls.uk/os/one-inch-rev-new-series/index.html>

The Other Underground Network Mapping London: <http://mappinglondon.co.uk/2014/londons-other-underground-network/>

Victorian London A-Z Street Index: <http://homepage.ntlworld.com/hitch/gendocs/lon-str.html>

Godfrey's: <http://www.alangodfreymaps.co.uk>

LATIN = ENGLISH NAME EQUIVALENTS IN REGISTERS

Here are some less obvious name equivalents. Check the main article.

<i>Audoenus, Audoinus, Oeneus, Oenus</i> = Owen	<i>Honoría</i> = Honour, Honor
<i>Carolus, Carolus</i> = Charles, Carl	<i>Jacobus</i> = James, Jacob
<i>Dionisius, Dionisius, Dionysius</i> = Denis	<i>Joanna, Johanna</i> = Joan, Jane, Jeanne, Jeanette, Joanne, Sinead, Siobhan
<i>Donatus</i> = Duncan	<i>Johanna</i> = Jane, Joan, Jean and Honora
<i>Lena</i> = Helen, Ellen	<i>Maria Anna</i> = Mary Ann, Marian, Marianne
<i>Elias</i> = Ellis	<i>Petrus</i> = Peter
<i>Erchenbaldus</i> = Archibald	<i>Philippa, Philippe</i> = Philip
<i>Gualterus</i> = Walter	<i>Radulfus, Radulphus</i> = Ralph
<i>Guglielmus, Gulielmus, Guilhelmus,</i> <i>Gulielmo, Gulielmum</i> = William	<i>Rugerius</i> = Roger, Rory
<i>Herweccus, Herveius</i> = Henry	
<i>Hieremias</i> = Jeremiah	
<i>Honorah</i> = Nora, Norah, (Jane, Jean, Joan)	

MORE WEIRD AND WONDERFUL WINDOWS SHORTCUTS

MAGNIFY: Windows key and the + and the – keys

TOGGLE APP. There are two choices: repeated use of Alt + Tab scrolls through the apps, or Windows key + Tab which Opens the task view (Windows 10)

SHAKE IT. This is the weirdest but may be useful if you have a lot of windows open and you want to minimize all but the one you are working with. If you click on the topmost section of the window – the top strip where you find the name of the program – then holding the left mouse button down, move your mouse left and right like you are shaking it. All other applications will minimize leaving only that program is showing on the desktop.

Windows provides a variety of ways to do the same things, but if you are keyboard fixated, why not give these shortcuts a go?



CITATION EXAMPLE

<http://nla.gov.au/nla.news-article59794610>
 Accessed Mon Jun 06 2016 21:30:46 GMT+1000 (AUS Eastern Standard Time)
 Alexandra Times (Vic. : 1868 - 1877)
 Fri 7 Aug 1868, Page 2
 ELECTION MEETINGS.

....
 ELECTION MEETINGS, ALEXANDIA.
 A public meeting the of Electors of Alexandra was held on Tuesday evening last at Cook's Hotel. Mr Patton was voted to the chair, and having explained the object of the meeting, called upon Mr H. Perkins to address the electors.

TROVE CITATIONS—“CITE TROVE”

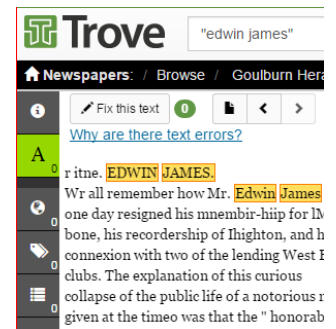
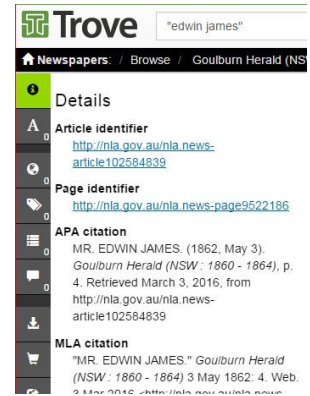
ONE thing you eventually learn is that you need to record your sources. How else do you prove to yourself which alternate facts are true, let alone prove to anyone else where you got your information from.

This article explains how to use an addin for Chrome or Firefox that improves on Trove's citation system.

If you are into Trove, you will know that you can display the source information, or citation in a number of formats. There are also a number of ways to get a copy of this citation for your records. In Windows, you could use the Snipping Tool to copy relevant bits of the screen as an image. To copy the citation as text, select the area and copy (right-click for the menu then select copy or just type Ctrl-C). From there, you can paste the source details into your favourite family tree program or into a separate file. I like to do both for reasons I will explain later.

The main task is to make a copy of the cited text. To get an image of the original article, Trove and Windows give you a couple of options. Once again you can snip the area of interest from the image of the article on screen, or you can download the whole article as an image or PDF file.

To get a copy of the text so you can include it in a family history you need to download or copy the plain text. If the text needs correcting, now is a good time to do that. As before you can select any part of the text and copy it. Once again paste it into a text editor or your family history program.



“Cite Trove automatically copies both the customised citation and the selected text at the same time

TROVE CITATION FORMAT CODES

- %A - Persistent Article URL
- %U - Article URL
- %u - Shortened Article URL
- %C - Current date and time
- %T - Newspaper Title
- %I - Newspaper Issue
- %P - Article Page number
- %H - Article Headline
- %Q - Selected OCR Text
- %n - Start a New line

See next page for Installing & Customising Trove

I used to follow these steps to make a single text file containing the citation and the relevant section of plain text. I filed this on my PC for future reference. I only included the facts in my family tree if they stacked up or were a unique reference to the fact.

A search of the document folder can quickly take you to the file and similar files any time you need to check the sources. Granted that this can be done in most family tree programs too, but I like to keep my primary records separate—including records I know are incorrect or don't belong.

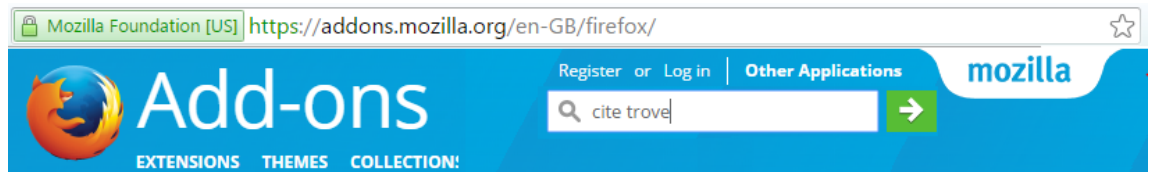
Now, I use Cite Trove. I used to find that I needed cut different parts of the citation for different fields in the family tree. Cite Trove enables me to customise the citation. Cite Trove automatically copies both the customised citation and selected the text at the same time. I still need to past the result into a text editor, but the process is simpler and quicker.●



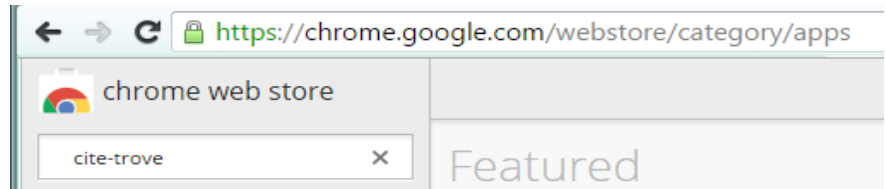
INSTALLING & CUSTOMISING “CITE TROVE”

Cite Trove can be installed into Chrome from the Chrome Web Store. It is also available for Firefox. Look for the web store or Google *Cite Trove Chrome* (or *Firefox*) for the installation page.

For Firefox:



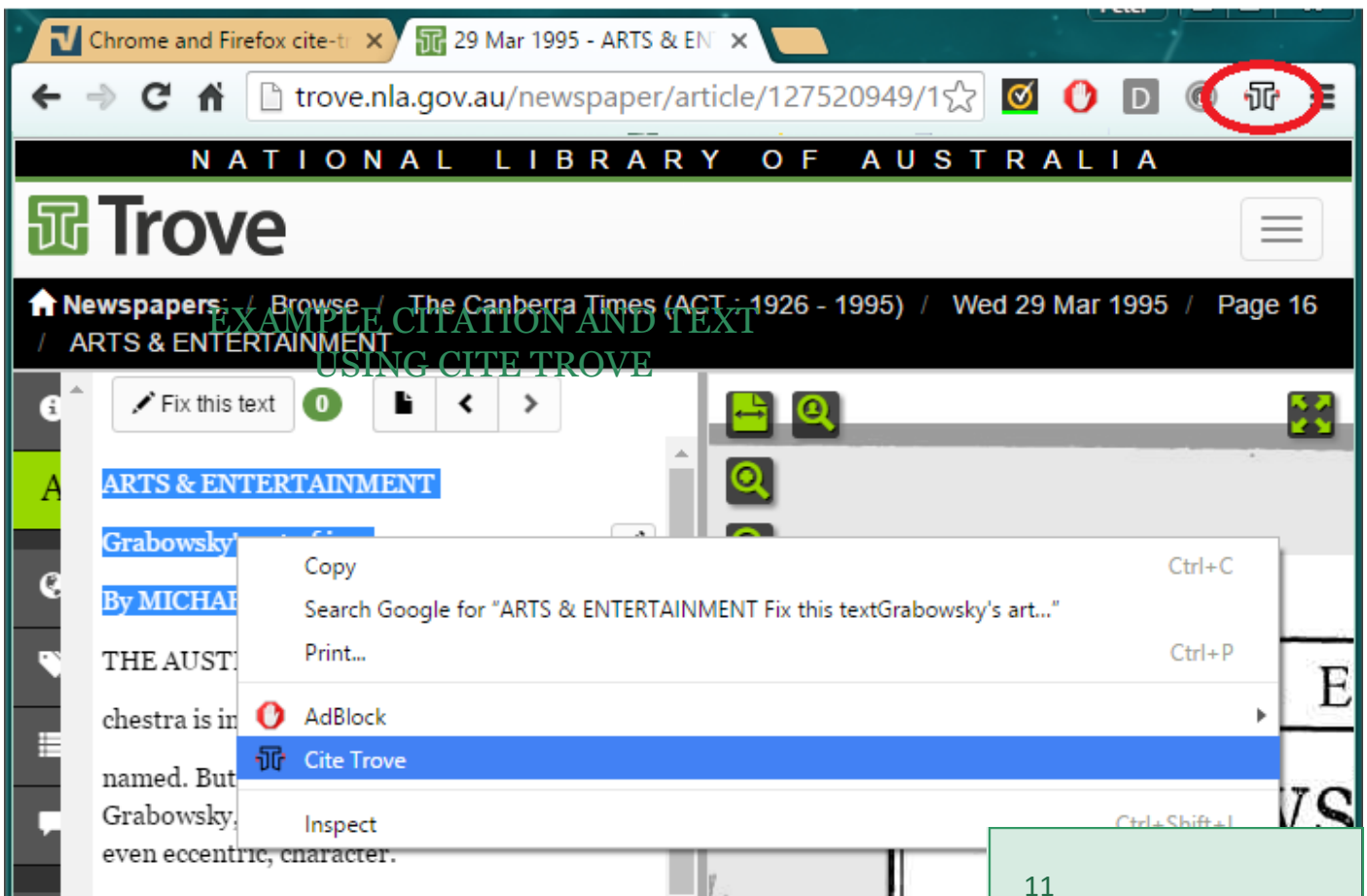
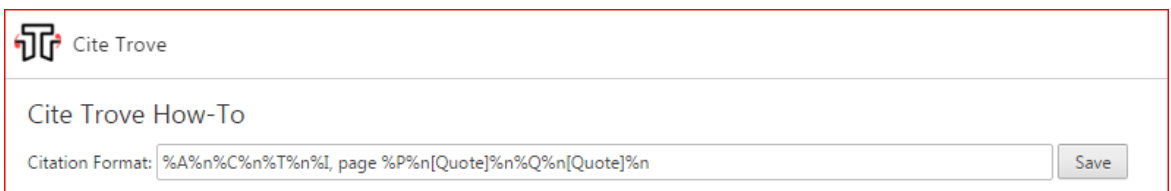
and for
Chrome:



Follow the instructions to install.

To use it, select some text with the mouse then Right-Click. You will see the new menu item “Cite Trove”. Just click this to place the citation and the text into the paste buffer. In Chrome you will see something like the screenshot below. Open a text editor or family tree program and then paste this where you want.

Note the new icon (circled). Clicking that will give you an option to customize the layout. The key part is the Citation Format. Information from Trove is represented by codes like %A, %U etc. Anything you write here can be saved as a new Format. Widen the browser so you can use the scroll bar and read all the information about the extension



EXEMPTION FROM MILITARY SERVICE

The Public Records Office of Victoria keeps VPRS 12455 Applications for Exemptions from Military Service.

The records in this series consist of the applications made for exemption from military service to the Exemption Court sitting at Rushworth. Under the Commonwealth Conscription Act 1916 and the War Service Regulations 1916, responsibility was delegated to the State Court of Petty Sessions to hear applications for exemption from military service on the allowable grounds. These records were kept separately from the usual Court Registers.

TRUE OR FALSE?

If a statue in the park of a person on a horse has both front legs in the air, the person died in battle.

If the horse has one front leg in the air, the person died because of wounds received in battle.

If the horse has all four legs on the ground, the person died of natural causes.

~~~

Many years ago in Scotland, a new game was invented.

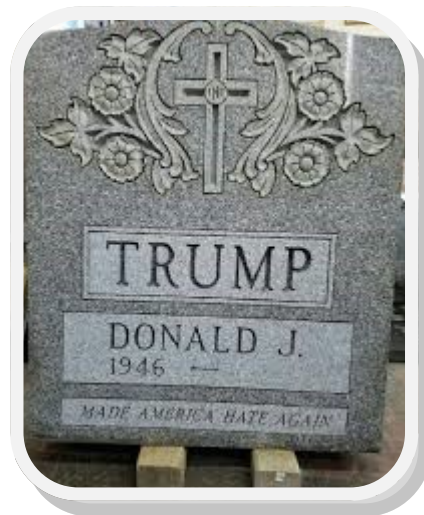
It was ruled 'Gentlemen Only ..... Ladies Forbidden'

And thus, the word GOLF entered into the English language.

## DEAD OR DYEING TERMS

|               |                                                                                                           |
|---------------|-----------------------------------------------------------------------------------------------------------|
| Warper        | Person who made the warp yarn which ran the length of the cloth.                                          |
| Beamer        | Person who set up the warp yarn on the beams ready to be set onto the looms.                              |
| Percher       | Person who checked the finished cloth, looking for damaged areas which needed mending.                    |
| Drysalter     | Person who dealt in various dyes and colours used in the dyeing trade.                                    |
| Dyer          | Person who coloured the fabric or yarn prior to weaving.                                                  |
| Annatto maker | Person who worked in the manufacture of dyes from the seeds of a shrub which gave a red or orange colour. |
| Colour man    | Person who mixed the dyes in the textile trade.                                                           |
| Colourator or | Person who worked with dyes.                                                                              |
| Piece-goods   | Dyeing individual items or lengths of cloth on a commis-                                                  |
| Hydrometer    | Instrument that Measured the specific gravity in the dye                                                  |

## FROM THE NET



## EXPIRED BURIAL PLOTS AT SPRINGVALE

As the 25 year tenure on some sites at Springvale Botanical Cemetery expires, the ashes and plaques are being removed from commemorative rocks, trees, rosebushes and wall niches. Plaques awaiting reclamation are marked with a sticker indicating:

"Tenure on this Memorial has expired. Please contact Administration".

The Springvale Botanical Cemetery makes every effort to contact the deceased's representative at the last known address, giving the following options:

- 1 Reclaim ashes and plaque
- 2 Paying required amount for continued tenure
- 3 Reclaim plaque and scatter ashes
- 4 Pay for renewed tenure in perpetuity

If none of these is accepted, the ashes are scattered in the Rose Garden and the plaques melted down. Any money involved is donated to charity.



*"Tenure on this Memorial has expired. Please contact Administration".*

## TENURE OF BURIAL PLOTS

After 1957, tenure at Springvale was reduced to 25 or 50 years where previously tenure had been "in perpetuity". Perpetuity was reintroduced in 1998. At that time only 25 years and perpetuity were offered.

Anyone can go onto the Necropolis website at <https://sbc.smct.org.au/> and check whether this is about to happen for their relatives. People can claim the plaque and ashes where appropriate, or update the tenure

But beware, but the clock on tenure starts from the day the space is reserved, not the day a person is buried, which can be years later.

Some families who are contacted choose to transfer the tenure into perpetuity, however, almost 80% of letters come back "address unknown".

Each cemetery will have its own policies on tenure. Let us know if you hear of any changes. ●

## INDEX OF EXPIRED BURIAL PLOTS

In the past, the AIGS advertised that it was preserving images of expired Plaques is a long-term project to photograph and index those images not claimed by Next-of-Kin.

Many plaques contain only the name of the deceased and the death date however some do contain more detailed information. Once the unclaimed plaques are removed from the site and final arrangements made, the only image of the plaque will be via this Index ●



## CAN WE HELP?

### RESEARCH:

A minimum research fee of \$20 applies, plus a stamped, self addressed business size envelope if response is to be sent by mail. Enquiries accepted by email. There may be additional charges for large amounts of photocopying and/or postage. Enquiries need to be clear and concise.

### CEMETERY LOOKUPS:

For registers which we hold, we will provide you with the register details plus a transcription of the headstone if there is one. \$2 per transcription. Please supply a SSAE with your request if hard copy required. Contact: The Research Officer, PO Box 767, Morwell, Victoria 3840.

### PAYMENT:

All payments in Australian currency. Cheques, cash or EFT.

## MID GIPPSLAND FAMILY HISTORY SOCIETY

Association A9923846S  
ABN 88 735 748 406

PO Box 767  
Morwell, Victoria 3840, Australia

[mgfhs.inc@gmail.com](mailto:mgfhs.inc@gmail.com)  
<http://home.vicnet.net.au/~mgfhs>

## JOIN US

MEETINGS are held on the fourth Thursday of each month, except December, in the Meeting Room of the Moe Library, Kirk Street. Enter via the rear door of the library. Open from about 7 p.m. Meetings start at 7.30p.m.

### ANNUAL MEMBERSHIP

Single member —\$25.00

Family membership —\$30.00

OUR LIBRARY is open to the public on Wednesday afternoons from 1p.m. to 4p.m. We provide research assistance at this time. \$2 donation per visit suggested for non-members.

ON TRACK  
June, 2016  
Issue 153

PLEASE  
PLACE  
STAMP  
HERE

Mailing Address Line 1  
Mailing Address Line 2  
Mailing Address Line 3  
Mailing Address Line 4  
Mailing Address Line 5