

# Inverlochy Log



(Sub group of the Anglesea and District Historical Society Inc.)

Vol. 21, Summer - November 2004 edition

Seasons Greetings to All



In this issue....

- Members Story
- New acquisitions
- Glimpses into the Past
- PRO Victoria

Quarterly Journal of The Surf Coast Family History

**The Surf Coast Family History Group**  
c/o P. O. Box 98 Anglesea 3230



**The Society is housed in the Anglesea Historical Society Museum  
McMillan Street Anglesea 3230**

**Library and Research Facilities**

Monday 10.00 am-12.00 pm  
Longer, if arrive before 12.00 pm  
Other times-by appointment  
Friday 10.00 am-12.00 pm

**Meetings**

The 2nd Thursday of the Month  
Commencing at 10am at the  
Historical Society Museum  
McMillan Street Anglesea 3230

**Visitors Welcome**

**Forthcoming Meetings**

**December 9th: Xmas Break-up**  
Party break-up Bring a plate, Lots of Fun

**February 10th:**  
“Your Irish Ancestor Hiding on the Net”  
Beryl & Brian O’Gorman

**March 10th:**  
“The Beauty That Is Cornwall”  
Tom & Libby Luke  
Ex- President of the Cornish Society  
Tom is a Bard of Cornwall  
Presentation in PowerPoint

**April 14th:**  
“Irish Transportation Records”  
Graeme Reynolds

**Committee Members 2004-2005**

**Chairperson**  
**Vice Chairperson**  
**Secretary**  
**Treasurer**  
**Librarian**  
**Committee Member**  
**Committee Member**  
**Committee Member**

Norma Morrison: 52 616239  
Pat Hughes: 52 896686  
Helen Mann: 52 632189  
Thelma Western 52 632865  
Rose Johnson: 52 561510  
Dulcie Quinlan: Not Available  
Colin Wood: cnwood@esystit.com  
Nielma Wood: cnwood@esystit.com

The Surf Coast Family History Group does not hold itself responsible for the accuracy of the statements or opinions expressed by authors of articles published in this magazine

# Public Record Office Victoria

## ONLINE RESOURCES

Following are a set of links to online resources - indexes, databases and digital copies of records - that are designed to make it easier to do some types of research. If you are uncertain how to use any of the resources below, refer to the PROVguide dealing with the topic.

[1. Databases Online](#) Keyword search for names, places and other information. Locate units and items in series

[2. Records Online](#) View digitised series online

**1. PROV Databases online PROV's indexes and databases online allow you to do keyword searching to find information in various series of records. They may stand alone or may need to be used in conjunction with *Archives@Victoria* to order records for viewing in one of PROV's Reading Rooms.**

### Immigration Records ([PROVguide 52](#))

[Unassisted Inward Passenger Lists to Victoria 1852-1923](#)

[Assisted British Immigration 1839-1871](#)

### Education Records ([PROVguide 56](#))

[VPRS 907/P0 Teacher Examination Papers, 1863-1872](#)

[VPRS 13719/P1 Database Index to Teacher Record Books, 1863-1959](#)

### Early Port Phillip Records

These databases are not associated with a PROVguide, but may be useful in researching early colonial Victoria.

[VPRS 815/P0 Court of Insolvency Records \(Geelong\), 1853-1928](#)

[VPRS 75/P0 Certificate of Discharge, Court of Insolvency, Melbourne, 1848-1875](#)

VPRS 7/P0 Treasurer's Correspondence Relating to [Pastoral Runs](#) and [Publicans](#), 1838-1855  
Port Phillip District [Electors Rolls](#), 1849

### Other Records

[VPRS 8851/P1 Database of Records in VPRS 8850 of the Royal Melbourne Zoological Gardens and Related Organisations, 1857-1991](#)

[VPRS 7882/P1 Public Building Files, 1874 - 1988](#)

[VPRS 12800/P1 Photographic Collection Alpha-Numeric Railway Negative Systems](#)

**2. PROV Records Online PROV's records online are digital copies of series that you can consult without visiting a PROV Reading Room. In some instances the series digitised below serve the same function as the indexes and databases above; to help you locate information elsewhere in PROV's collection.**

### Convict Records ([PROVguide 57](#))

[VPRS 110/P0 Register of Convicts, c1838-1852](#)

[VPRS 108/P0 Register, Police Magistrate, Portland, 1840-1853](#)

### Divorce Records ([PROVguide 61](#))

[VPRS 5335/P0 Index to Divorce Cause Books, 1861-1924](#)

### Education Records ([PROVguide 56](#))

[VPRS 65/P0 Copy of Inward and Outward Correspondence, Board of Education, 1849-1851](#)

[VPRS 5675/P0 Index to Special Case Files, Education Department, 1862-1977](#)

[VPRS 5676/P0 Register of Special Case Files, Education Department, 1852-1977](#)

### Prison Records ([PROVguide 58](#))

[VPRS 10867/P0 Alphabetical Index to Central Register of Male Prisoners, 1868-1947](#)

[VPRS 10879/P0 Alphabetical Index to Central Register of Female Prisoners, 1857-1948](#)

All records can be viewed at the Victorian Archives Centre reading room located at North Melbourne. The Victorian Archives Centre holds a large set of search and reference tools, on computer, paper based and in microform. Some frequently used records, such as shipping lists recording immigrants to Victoria, have been microfilmed and can also be viewed in the reading room.

A second reading room is located in [Ballarat](#), holding original records created by government offices in the central highlands, South West and Wimmera regions.

# Glimpses from the past

## Pearse & McConachy Families

### Pearse Family

**Thomas Butson Pearse 1808-1862 born Cheriton-Fitzpaine UK**  
**Martha Sperring 1818-1870 born Bath UK. Both died Aireys Inlet.**

Thomas Pearse and Martha Sperring arrived at Melbourne on board the Strathfieldsaye on 30 August 1841. Both were single and able to read and write. They married on 27 April 1843 at St James Church of England, Melbourne on the corner of Williams and Collins Street.

They then made their way to Geelong where Tom became a butcher.

The 1850 rate books show him as  
*T. Pearse Moorabool Street,  
Shop and 4 rooms.*

Robert McConachy was his apprentice.

This was the beginning of a partnership of Pearse and McConachy resulting in the families intermarrying, with Sarah marrying Robert McConachy and Thomas Pearse jnr. marrying Robert's niece, Annie

The 1861 stock return for Angahook shows 100 head of cattle, 30 horses and 50 acres under cultivation. They had a free hold of 640 acres, a square mile, and leased 2,560 acres of Crown land.

A stone shed on the property doubled as a stable and wool shed, when they introduced sheep to the property.

Tom Pearse contracted hepatitis in 1862 and died on 9<sup>th</sup> August. He was 53. There was no medical certificate and he was buried on the cliff top where the cairn now stands.

Martha, his wife, died eight years later in 1870, from a heart defect. She was aged 51. The two younger children became the responsibility of Robert and Sarah McConachy.



**The original Bark Hut above**, where Thomas & Martha Pearse Lived.

It had double bunk beds at one side & single bunk beds on the other, this took up one end of a open plan single room.

With a brick fireplace and dirt floors. It is believed they mixed animal blood in the dirt to make it hard like cement, they swept it until it shined.

**Below** is a plague from the Memorial of Thomas & Martha Pearse (Nee) Sperring



Situated near the lighthouse in Aireys Inlet

**Children of Thomas & Martha PEARSE**

Martha Pearse, nee Speering, 1818-1870

**1844-1925 George William PEARSE**



**1846-1920 Sarah Taylor PEARSE**

m 1861 Robert McConachy  
*Issue:* Ellen (Pilley), Thomas, William, Samuel, Bessie (Taylor), Louisa, David, Robert, Alfred, Emma (Brown), Alexander, Mary (Schroeter), Edward, Albert

**1846-1892 Elizabeth PEARSE**

m 1868 Frederick Walkden  
*Issue:* Arthur, Percy, Ethel, Alice, Percy, Eva (White), Dougan, Gerald, John, Edith, Amy, Elsie (Pearce), Walter, Amy (Dinning)

**1849-1909 Thomas PEARSE**

m Annie McConachy  
*Issue:* Thomas, David, Elizabeth (Scurrah), Thomas, Charles, Annie (Smith), Peter, William, Isabella

**1854-1922 Emma Martha PEARSE**

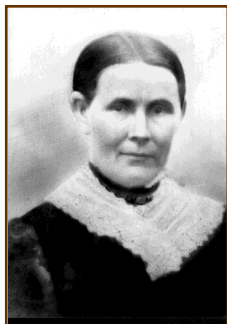
m Charles Holmfield  
*Issue:* Henry, Emma, William, Ethel, Arthur

**1857-1839 Eliza Ellen PEARSE**

m James Myers  
m Thomas Beech  
*Issue:* Mabel (Cummings)

**1860-1944 Charles Robert PEARSE**

m Grace Russell  
*Issue:* Nancy (Curley), Russell, Margery, Helen (Shaw)



Sarah McConachy

**JOTTINGS From the Family Recipe Book**

Tues 28<sup>th</sup> July 1856  
Mr Billy Ham and Miss Louisa Cowell got spliced the other day,

Poetry  
On that eminence perched;  
You will soon discover,  
You have not one chance,  
Of securing a lover.

January 1<sup>st</sup> 1886  
Mrs Holmfield and children (3) and Miss Mc arrived Jan 4<sup>th</sup>  
Mr C Pearse Jan 8<sup>th</sup> 1886 and 14<sup>th</sup>  
T Pearse Jan 11<sup>th</sup> 1886  
Mr C Holmfield January 29<sup>th</sup>  
Mrs Grant 8<sup>th</sup> February 1886  
Miss McConachy returned home February 25<sup>th</sup> 1886  
May 1<sup>st</sup> 1900 Mrs F White and child  
Miss M McConachy home

Mrs S McConachy  
This book is hers

I do declare  
Then steal it not or else beware

Aug. 29<sup>th</sup> 1908 American Fleet arrived. Left 6 Sept . 1908

Aug 19 1909. Flooded creek all over Anderson's and Brown's paddocks. Mrs Jerry and maid drowned at 1/2 past 5.00 pm

In childish scrawl  
There is a bunk in Kew for you alright!



FAMILY HISTORY  
One Day Conference

## Lady Teviot One Day Conference

FAMILY HISTORY  
One Day Conference

### What a Great Day!

A Special thank you for **all** the people who helped on the day.  
This made it very enjoyable for Family History Members  
Thank you for the generosity of the Historical Society members & volunteers.



### Xmas Raffle



Thanking all members who donated items for our Xmas raffle  
We still need volunteers for some Friday's & Saturday's selling tickets  
We are selling tickets up to the 18th December.  
The raffle will be drawn at the Historical Society  
Saturday the 18th Dec at 1.00pm

Good Old  
Australian  
Damper

### Herb, Garlic and Cheese Damper

With Herbs  
Garlic &  
Cheese

#### Ingredients

2 cups plain flour  
2 cups self raising flour  
1 tsp salt  
1½ cups water  
1 tsp garlic powder  
½ tsp dried thyme  
½ tsp dried oregano  
1 tsp dried parsley  
½ tsp dried basil  
1 cup grated cheese

#### Method

1. Oil the inside of the Dutch Oven and sprinkle with flour.
2. Mix flour, salt, herbs and water to form a firm dough and knead into a ball.
3. Flatten dough into a disk and put most of the cheese in the centre and fold it over then knead another two or three times.
4. Put dough ball into centre of Dutch Oven. Using a sharp knife make a few cuts across the top of the dough. Sprinkle remaining cheese over the top.
5. Rake some coals out from the edge of the fire and place them around and on top of the Dutch Oven, but not underneath or the damper will burn on the bottom.
6. Cooking time can range from 15 to 30 minutes depending on the size of your Oven and the amount of coals you use.
7. Slice thickly and spread with butter. Serve with soup or stew, or as a snack washed down with Billy Tea.

## Library news

### New Acquisitions: National Burial Index 2nd edition

**The following books are now available on the Library shelves.**

The Cathedrals of England & Wales  
Frances T Bumpus 726.6.

The Kirkyard of Stracham  
Robert W Pirie 929.32.

Monumental Inscriptions, Alves  
Churchyard  
and New Cemetery Morayshire  
Bruce B Bishop 929.32 BIS.

Monumental inscriptions & War  
Memorials  
in the Vale of Pluscarden Moray  
Bruce B Bishop 929.32 BIS.

Monumental Inscriptions, Birnie Churchyard &  
New cemetery Morrayshire.  
Bruce B Bishop 929.32 MOR.

Cont....

The Kirkyard of MaryKirk  
Sheila Spiers 929.32 SPI.

Monumental Inscriptions for Forglen Churchyard  
Sheila M Spiers 929.32 SPI.

Monumental Inscriptions for Inverkeithny  
Churchyard  
Sheila M Spiers 929.32 SPI.

The Kirkyard of Alvah  
Monica Anton 929.3 ANT.

County of Wigtown, Census records of 1841 by  
surname; Parish of Whithorn.  
929.35 DUM.

County of Wigtown, Census records of 1841 by  
Surname; Parish of Leswalt.  
929.35 DUM.

## Internet Web Sites

### Online Records New South Wales

<http://www.ihr.com.au>  
Over 10000 pages, with listings of directories, electoral  
rolls, mining and pastoral records, occupations.

#### Dead Persons' Society

<http://members.iinet.net.au/~perthdps/hms2.html>

#### Australasian Genealogy and Family History Societies with Web Sites

[http://www.geocities.com/Heartland/Canyon/  
6387/linkgenfamily.html](http://www.geocities.com/Heartland/Canyon/6387/linkgenfamily.html)

#### Useful Genealogy Web Sites

<http://www.capebanks.org.au/links.html>

#### NSW Registry of Births Deaths & Marriages

<http://www.bdm.nsw.gov.au/>

#### State Records New South Wales

<http://www.records.nsw.gov.au/>

#### Irish Convicts to NSW 1791-1825

<http://www.pcug.org.au/~ppmay/convicts.htm>

### Tasmanian Gen Web

<http://www.rootsweb.com/~austas/>

#### Tasmanian Genealogy Links

[http://users.tpg.com.au/sharenet/tas/  
tasfamilytree.html](http://users.tpg.com.au/sharenet/tas/tasfamilytree.html)

#### Genealogy addresses for the State of Tasmania

<http://www.cohsoft.com.au/afhc/tas.html>

#### Tasmanian Genealogy Dataweb

<http://www.rootsweb.com/~austas/tasdataweb.htm>

#### Tasmanian Family History Service

<http://www.tasfamily.net.au/>

#### Cemeteries of Tasmania

<http://www.interment.net/aus/tas/>

#### Tasmanian Coastal Cemeteries

<http://tascoastalcemeteries.com/>

## Surface Mail

If undelivered return to  
**The Surf Coast Family History Group**  
P. O. Box 98 Anglesea  
Victoria 3230