

Nibbles: In this issue of Nibbles our blast from the past is an article about "The Mawsons" who lived in Anglesea from around 1900. We also have another fascinating description of an item from our collection from our museum curator Susan Clarke. But first of all the quiz (a broader range of questions this time).

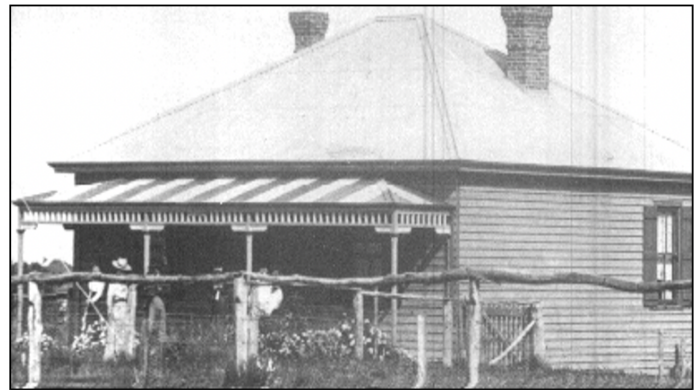
- Q.1. Which pharaoh began the construction of the Pyramids of Giza?
- Q.2. Which British Archaeologist discovered Tutankhamun's tomb?
- Q.3. Which 13th Century Scottish knight did Mel Gibson portray in the film "Braveheart"?
- Q.4. What was the name of the first horse to win the Melbourne Cup?
- Q.5. Who was the first explorer to reach the summit of Mount Kosciuszko?



The Mawsons: Mawson Avenue is named after Sam and Emma Mawson. Their family was once well known and respected in our seaside area. Sam Mawson was the President of the Anglesea and Recreation Sports Club in 1914. Mrs Emma Mawson had the honour of opening the new clubhouse in January of that same year.

When the family first travelled to Anglesea in their horse drawn coach, Sam Mawson sat up front with the footman, with Mrs Mawson seated at the rear with the four children and maid (see photo left).

An Early Anglesea Family: The Mawson's holiday home 'Cambridge' (photo right) occupied a very large block at the south-east of today's Noble and Murray Streets. It was built in 1902 of timber, and was of double-front design. A separate building at the rear of the property contained a bunk room, billiard room and stable. This was named "Inverloch" as it had been constructed from timber salvaged from the local shipwrecks of that year. A flagpole said to have come from that particular ship was at the front of the cottage, and often flew a blue flag with the word Cambridge emblazoned on it.

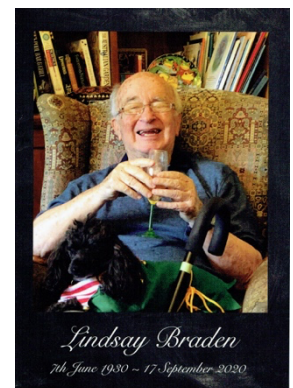


Firewood: In the last Nibbles I advertised that Graeme Weber was looking for wood that he could cut up to raffle for our building fund. The phone number I gave is no longer operational. Graeme's mobile is 0419 303 061. If you have trees you are willing to donate please phone Graeme. (Jan Morris)

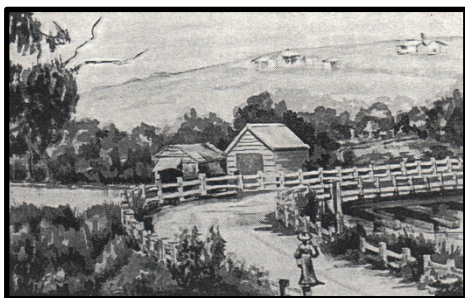
Greetings from the Smiths: Lyn and Bob Smith now live in sunny Queensland but are still interested in our society and receive our newsletters and Nibbles News. The following message was received from them recently.

*Thanks very much for Nibble's News
Love & Best Wishes to you & all our friends in Anglesea & surrounds. We hope you're all surviving the lockdown restrictions as we have in sunny Qld. Everyday is a good day, and just keep on keeping on. Enjoy what we've got.
Bob & Lyn Smith*

Lindsay Braden: We received this photo of Lindsay on his 90th birthday and a nice note from his family following our audio-visual contribution to his funeral.
Thank you so much for your kind words of comfort and your tribute to our dear Lindsay. The research he put into Anglesea History was a labour of love, and interest to him, and fulfilled his time when he retired from his business. He is at peace now with no more suffering from Covid-19.



Anglesea History 1900-1930. Limited numbers of this book are now available at \$25 from Anglesea & District Historical Society. This book by Keith Cecil and Roger Carr has been out of print for some time. As we have had many requests for it, we have had a small number reprinted. They are available by phoning Jan Morris on 0448 526 311.



Correspondence Cards: Back in 1987 as a fund-raiser, the Historical Society produced a series of 4 correspondence cards which it sold at \$2.00 a set. The cards featured the artistic work of one of our very talented members Edith Lawn. A framed print was then raffled at the Annual Dinner. No wonder we had to work so hard to raise funds, membership then was only \$5.00. Guess what? We still have to work hard to meet our running costs, and unfortunately this year COVID has limited our normal fund-raising activities. Cross your fingers for 2021.

Radio - AWA Radiolette 500MY: In these days when we have news and entertainment "on demand" from multiple sources, we may have forgotten just how important the radio was to family life last century. This AWA Radiolette is just one of several radios we have in our collection. We are able to 'listen' to the radio because the sounds made in one place are able to be transmitted to many other places through the use of electromagnetic radiation. This phenomenon was first commercialised by the Italian Guglielmo Marconi. In the early years, Marconi was almost monopolising the industry worldwide with companies in Europe, the USA and Australia. In Australia Marconi and its main competitor Telefunken amalgamated to form Amalgamated Wireless (Australasia) Ltd. (AWA) in 1913. The 1940s and 1950s were the "golden years" of radio and this set was manufactured in 1946-1947. The case is made of bakelite in the commonest brown colour. In the first year of sale, the model cost 18 pounds.



Recent Acquisition: We have recently acquired a 1920s teachers table. These tables were once Education Department issue to schools. This particular table comes from Balwyn Primary School in Melbourne



Aerial Photographs: One of our members Ryan McKnight is a local painter. His job gets him into lots of houses and buildings in Anglesea. He has had some great finds regarding historic photos that he has been able to scan, particularly aerial photos of Anglesea. We plan to have an exhibition of aerial photos showing just how Anglesea has changed over the years. If you have any photos that could add to this exhibition please let Jan Morris know 0448 526 311. We can scan your photos in minutes and have them returned to you .



Push Lawn Mower: While cleaning out under History House we found this old push hand mower. Do you remember how hard it was to mow the lawn before the Victoria motor mower was invented in 1952? Although not bearing any brand name, this hand push mower appears to be a 'Trojan' manufactured c.1930. It is a light mower of sturdy construction. All connecting points are carefully milled to exact dimensions. Shoulders are machined on each end of the cross-rod to produce a rigid frame. The three revolving knives are of crucible steel. Although this old mower still works, there isn't a volunteer to push it. The person who mows our lawn much prefers the electric one in the garden shed. The push mower will go in our outdoor display.

Answers to the Quiz: Q.1 Pharaoh Khufu in 2550 B.C.E. Q.2 Howard Carter Q.3 William Wallace Q.4 Archer Q.5 Pawel Strzelecki

The month of November: Here's a list of some of the things that happened during the month of November.

Nov 3rd 1957: Soviet Russia launched the world's first inhabited space capsule, Sputnik II, which carried a dog named Laika into space. It was a suicide mission for the poor dog, as it was not intended to return it to Earth.

Nov 5th 1605: The date of the failed "Gunpowder Plot" to blow up the Houses of Parliament and King James I. It was celebrated for years in some Commonwealth countries (such as Australia) as "Guy Fawkes Day."

Nov 24th 1642: Abel Tasman became the first recorded European to discover Van Dieman's Land (later renamed Tasmania).

Historical Jokes:

1. My poor knowledge of Greek mythology has always been my Achilles' elbow.
2. In the War of Independence, Americans may have rejected the Royalist's laws, taxes, spelling and tea, but they will never reject King Henry's "foot" as a unit of measurement.
3. What's the definition of "Baroque?" When you run out of "Monet."