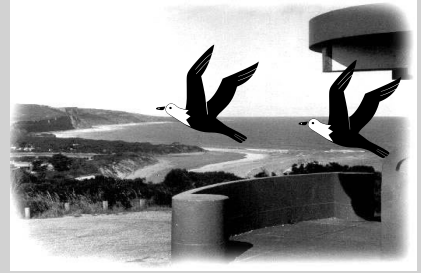


# Coastal Current

seaside tidings from ...  
The Anglesea & District  
Historical Society Inc.



## President's message

**D**uring November we held our Annual Luncheon, which again was well attended.

Our speaker was Diana Trewenack, a granddaughter of Godfrey Hirst, who spoke on her early days in Eastern View, and their holiday house there.

This was accompanied by a Powerpoint Presentation which was very well received.

As we have produced an excellent Calendar to celebrate the 75th Anniversary of the Great ocean Road, selling this for \$10, we hope everyone will support the sale of this by buy-

ing them for your family and friends.

This only a Limited Edition Calendar, so we suggest you don't delay in obtaining yours.

As Christmas is rapidly approaching, the Committee and myself thank you for your continuing support throughout the year. We wish you all a very safe holiday, and hope everyone has a great Christmas and New Year.

■ *Norma Morrison*

## From our photo album



Fishing at boatsheds 1890

**Newsletter No 75  
November 2006  
Anglesea & District  
Historical Society Inc.  
Box 98 Anglesea 3230  
Victoria. Australia.  
Incorporation No.  
A0009246F**

**President :**  
**Norma Morrison**  
**(03) 5261 6239**

**Secretary :**  
**Bruce Bodman**  
**(03) 5263 1249**

**Treasurer :**  
**Thelma Western**  
**(03) 5263 2865**

**Meetings**  
The Historical Society meets on the first Sunday of each month unless otherwise notified

**Museum**  
Our Museum at 5a McMillan Street Anglesea, will be open during the Xmas and Easter holidays on Sundays 2-4pm or by appointment.

.....  
**Web site -**  
<http://home.vicnet.net.au/~angen/>

**e-mail -**  
[normamor@tpg.com.au](mailto:normamor@tpg.com.au)



## WHYTE'S RIVER BOATSHED 1899-1946

The boatshed of Louis Australia Whyte from 'The Heights' Newtown, was once a well-known river landmark.

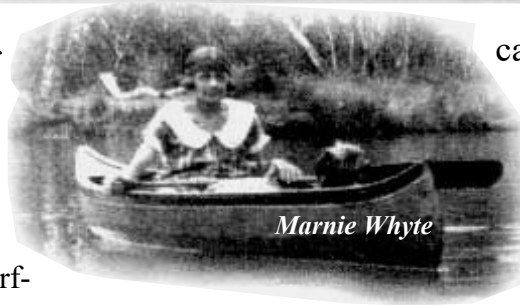
This was built in approximately 1899 of timber frame, and clad with corrugated iron. It was cut into the riverbank near the corner of today's Bingley Parade and Wilkin Street.

After Louis Australia Whyte died his son Louis Melville Whyte mainly used the shed to store his surfboards.



He would travel to the boatshed in his Rolls Royce Silver Ghost, and spend time surfing along the coast between Anglesea and Lorne.

This structure was moved across the road in 1946 by Les Hedley and helpers, and became part of Leo McMahoons house.



*The cut into the riverbank can still be seen.* ■ L.B.

## Boatsheds formerly south of bridge



River boatsheds were previously an important part of the social scene in Anglesea. They are recorded as far back as 1886.

In the early days **before** the coming of the motor car, the discovery of the surfboard or the construction of a Golf Course, the river was the *focal point* of recreational activities.

Fishermen were the first ones to make use of the stream. A little later it was fashionable to row your friends

up to the fork.. The New years Day regatta was once the event of the year, and a great crowd gathered to cheer on their favourite crew

During 1970 most owners of sheds on Council land were given 3 months to remove them.

*In 1997 only 3 river boatsheds remain - these are located on the north side of the bridge* ■ L.B.



LETTER RECEIVED FROM GILLIAN WALKER

## SUMMER EMPLOYMENT AT THE FOUR KINGS

★ TO: LINDSAY BRADEN,  
RESEARCHER,  
ANGLESEA AND DISTRICT  
HISTORICAL SOCIETY.

I enclose a copy of an old photo which would date back to 1953-4 outside the garage of the 4Kings, where we as a group of students worked one January.



On the left seated is Mary Quinlan, who later went on to teach at the Mathew Flinders Girls School in Geelong. Standing in the middle is me (then Gillian Osborne.) Mary and I were school friends from Ballarat and the other four, of which two are pictured, were physio students.

They were all very nice girls, which was just as well as we lived cheek to jowl in the garage.

We couldn't close the door at night because of the heat, obviously there was no mosquito screening, so we doused ourselves in citronella.

I noticed on Wednesday that the garage had

been knocked down.

Mary and I were the cooks— she doing the grills, and I the fish, chips and banana fritters.

*Our customers were young male surfers, who were not particular about what they ate. Thankfully, as we were not exactly "cordon bleue."*

When not at the coal face, we too were in the water just over the dune. The weather was invariably fine that January.

Wal. Cherry, who later was such a force in Australian theatre, founding the Emerald Hill Theatre, and then becoming a Professor at the Melbourne University, ably ran the shop with his group of boys. *It was certainly a young enclave!*

■ Gillian Walker



Original 4 Kings  
kitchen



# temporary kitchen staff

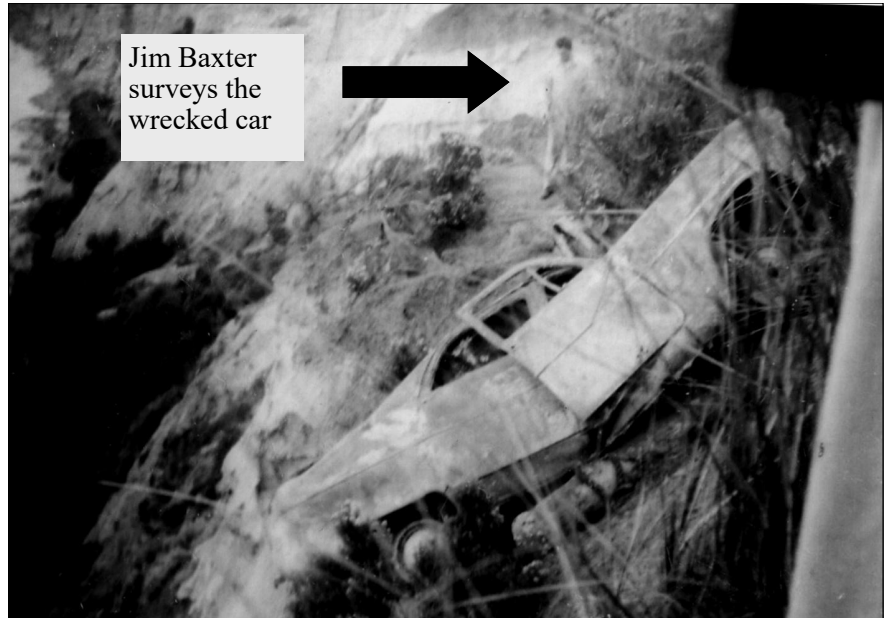
# CLIFF PLUNGE

At Anglesea

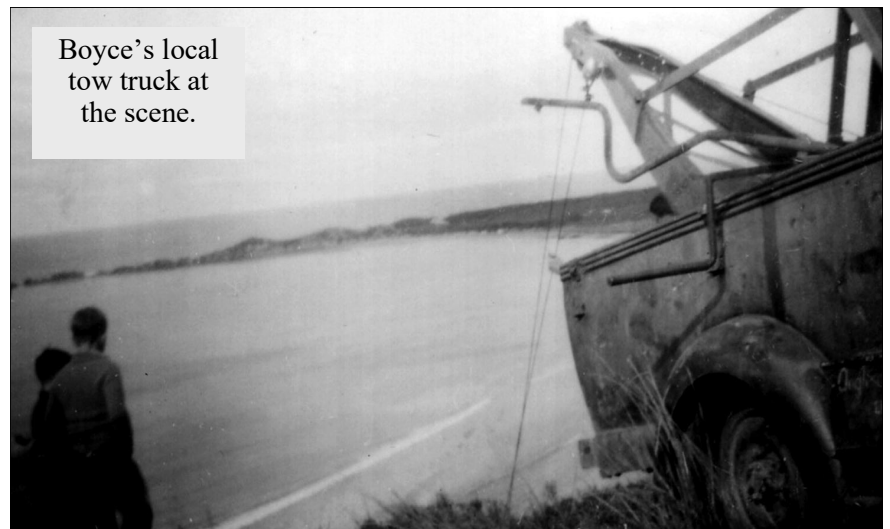
## Doctor's car veers off the Ocean Road

During the 1950's Dr. Vern Batt from Torquay unexpectedly ran off the Great Ocean Road at the old sharp bend once **opposite the Loveridge Look-out**, whilst travelling towards Lorne at night. Fortunately his Ford Zephyr M2 came to rest on a plateau half way down the cliff face. He only sustained slight injuries. His wrecked car was hauled back to the top by Les Boyce and Jim Baxter of the local Shell garage.

*Over recent years the offending curve has been modified ■ L.B.*



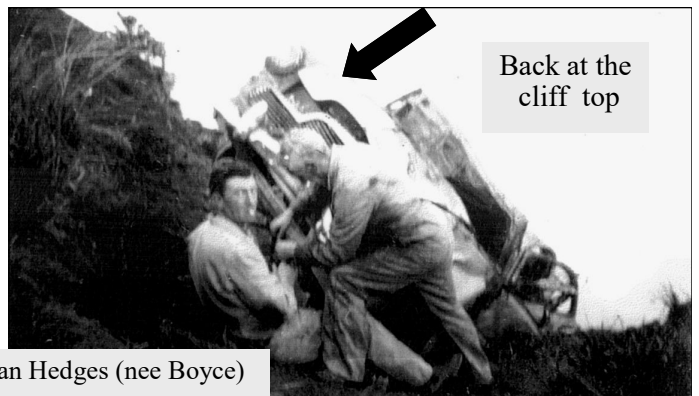
Jim Baxter surveys the wrecked car



Boyce's local tow truck at the scene.



Zephyr M2



Back at the cliff top

Photos from Marian Hedges (nee Boyce)