

ANGLESEA & DISTRICT HISTORICAL SOCIETY INC

NEWSLETTER No. 46 - APL - 99

PRESIDENT
Val Amery
(03)52631852

SECRETARY
Shirley Forsyth
(03)52631430
Box 98, ANGLESEA 3230

TREASURER
Betty Lloyd
(03)52633442
9 Belton Av. ANGLESEA

SUNDAY - MAY 2nd - A SPECIAL EVENT

Our monthly meeting for May will be held at a very special venue - ERSKINE HOUSE = where Mr. Rob Martin will allocate a room for the business section and then take us on a tour of this Lorne landmark and tell us of future plans.

We will enjoy a cuppa there before returning home. A car pool will operate - meet at the Museum from where we will depart no later than 1.10p.m. Should you miss the main group here for any reason proceed to Lorne and we can meet up in the Erskine House car park. This should be an interesting afternoon and we look forward to having as many members as possible to participate. Of course Aireys folk will depart from there. Any queries to Val or Shirley.

Our April meeting held on Easter Sunday had one of the smallest attendances ever - we did consider changing the date but this always presents difficulties. However, those who did attend really enjoyed a video of marvellous Melbourne during the 50's. The Olympics were well featured and a Grand Prix race at Albert Park surprised some of the audience! they had forgotten that this recent innovation had in fact been run here in the past. Heather Chalmers a local "flower lady" captivated her audience with the story of her 10 years program establishing a protea farm at Bellbrae from scratch to the present when her blooms can be exported to Japan, Taiwan, Canada and the U.K. A rare white protea has recently found a market in Hawaii.

Our first meeting of the year in February also found us moving away from the Museum after a short "business" segment to the Surf Riders Museum at Torquay. This proved to be an interesting exercise too although all present were well past this recreation there were many questions to our guide Mr. Jack Findlay who did a great job.

ACQUISITIONS

We continue to receive excellent "donations" for our collection - 3 volumes for the library from Margaret Ingham, Meissen porcelain from John von Brandenstein, interesting items from the Lions Op Shop some of which gave us an excellent little segment of "guess what"! Other gifts include a small booklet of photos of Lorne in the 20's, and a snap of the diving board that used to be located on Anglesea River and one that had not been seen before by members.

GENEALOGY GROUP

Following a request from member John Parsons on behalf of a group of folk interest in genealogy it was agreed at the April meeting that we accept them as Society members paying a pro-rata membership at this stage with use of the Museum when required for their activities. Of course any member would be more than welcome to join them at any time. This venture should provide us with an added dimension and our researcher Lindsay is delighted with the move - should be beneficial to all concerned.

NEW MEMBERS We are delighted to welcome Mr. & Mrs. P. Wright and Mrs. K. Feather to our membership and look forward to them sharing some of our activities.

Sale of our books, photos etc. have continued strongly over the summer period and we now have several outlets. The display in the shopping centre opposite the supermarket has generated a good deal of interest. When changing the photos recently President Val was engaged in conversation with Peter Calvert - the upshot of this encounter resulted in Peter donating a large roll of plastic bags (used for covering the photo boards in storage) - Again we are most grateful for these gestures.

OUR BUILDING Following a well attended working bee earlier in the year when overdue maintenance became very obvious the shire was advised of our concerns - and the prompt response was most pleasing! We now have a freshly painted Museum with attention also being paid to the crumbling stone facing work on the ground level of exterior walls. We are most appreciated of this work - our "home" was admired too by members of the Heritage group at a recently held meeting hosted by our President who was assisted by Betty Lloyd.

It is with sorrow that we record the passing of long-time member Nancy McDonald. Nancy was a person who had much to offer with her questions on and knowledge of a wide variety of subjects. Carol Hamilton who delivered the eulogy at Nancy's service was assisting her with her memoirs and has intimated to Val that she would be happy to speak to us at a future date.

RASMAC FORUM AT COLAC - Friday April 23rd.

Your President and secretary attended this forum which was convened by Jenny Whitelaw, senior adviser of the Regional Specialist Museums Advisory Committee. Held in the Colac Civic Centre the proceedings were opened by the Mayor of Colac who was very warm with her welcome to both Museum officers and visitors. The purpose of the day was to identify issues of concern to people who are involved in collections forming the basis of history in the South Western Region of Victoria - from Geelong to the South Australian border. Forums have already been held in other regions.

We were addressed by specialist officers from whom we learnt of the philosophy of museums in the modern world exemplified by the dramatic impact of computers in cataloguing and dissemination of information. This was graphically illustrated by a mock up of a "surf on the internet". Australian Museums on Line (A.M.O.L - another acronym!) has in the past five years grown from entries barely filling a page to over 7000000 entries. (In Victoria alone there are 247 museums) The Drysdale Museum has its own web site and has gained an international reputation for the quality of its presentation. We found the day both informative and challenging and the opportunity to "network" rewarding. It was impressed upon those present not to be scared of computers - the message was - Have a Go!

FROM THE 'INVESTIGATOR'

DID YOU KNOW that in 1848 the Victoria Theatre in Ryrie Street lengthened its stage by 12 feet, built a new proscenium (look it up!!!) and carried the dress circle right round the pit - the whole of the interior was domed and redecorated. A first rate company was to be hired and it was believed that the first play would be "She Stoops to Conquer". However, the theatre re-opened on June 12 with "The Blind Boy" and "The Man About Town". And to remind you - this was in 1848!! Over one hundred and fifty years ago!

Undoubtedly Edna Walling is respected as one of Australia's most noted landscape designers. She regarded The Great Ocean Road as one of the most beautiful and universally enjoyed memorials in Australia.

When this scenic route was under construction, the Trust (continually short of finance), subdivided and sold 140 blocks on 'Big Hill', so as the proceeds would keep the work progressing.

In 1948 Walling purchased 6 hectares of this sloping land and erected her 'Villa' midst the black ironbarks.



Edna

Edna clearly let it

be known of her dislike for the name of Big Hill's 'Cinema point', which regrettably drew attention out to the spectacular view of the sea, instead of concentrating on the nearby distinguished ironbarks.

Edna Walling's 'East Point'

The Walling thumbprint can be still noticed along the narrow private access track. This was originally designed to save as many trees as possible on the climb up to East Point Villa. Frail areas of the

side banking were strengthened with neatly placed rocks which gave no offence to the woodland scene.

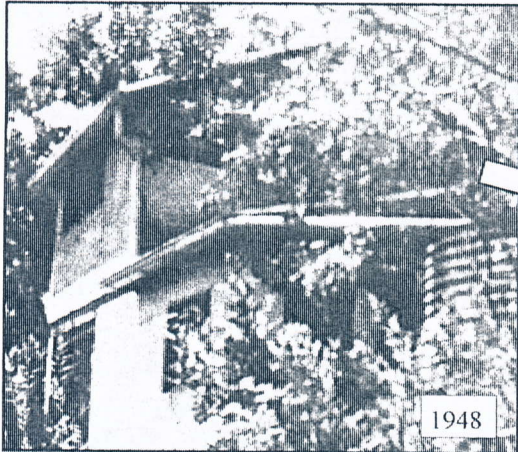
It is recorded that the cottage awarded Edna an opportunity to blend into the landscape as simply as possible without unduly disturbing the tranquil surroundings. Yet two of our Society members who actually saw the abode, mentioned that the structure's walls were brush coated with a pink type of wash - everyone to their own taste!

Why is flue off-set from chimney base?

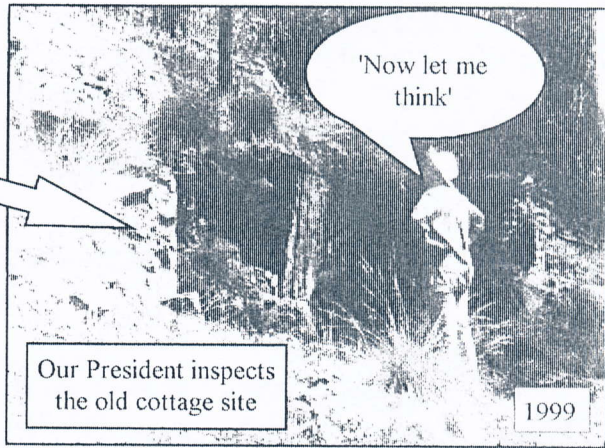
Is chimney base connected to flue?

'East Point' cottage proved to be one of Edna's favourite places. Unfortunately it was destroyed by the 1965 bushfire. Before departing to live in Buderim in 1967, Walling assigned the property to the Bird Observers Club.

Edna Walling died in 1973 aged 77. L.B.



1948

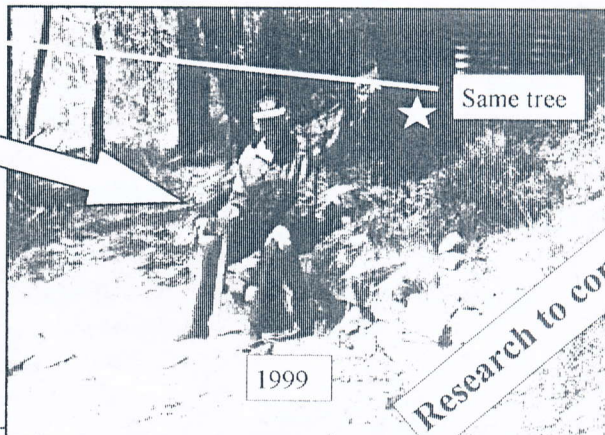


Our President inspects the old cottage site

1999



1948



1999

Same tree

Research to continue

Some years ago I was fortunate enough to travel along the coast to Eastern View with Ray Clarke. He reminisced how they walked along the beach from their far away farm to attend the Aireys School, before the Great Ocean Road was built. Through winter George Noble would come out each day from 'Angahook' homestead, and row them across the flooded stream in a clinker boat. *Ray even showed me the exact spot where they traversed.*

During March this year our Society had an inquiry regarding the Berthon family at Aireys Inlet. Discussion led to the fact that an oil painting by Miss Lili Berthon was at the Geelong Art Gallery. After completing research on the family at the Geelong Records Centre, I called to the Art Gallery immediately next door –

One thing leads to another

'LILI WHO?' asked a rather bored lass at the reception desk. She picked up the intercom for details of the unknown. To her amazement there was such a painting. It hung only a short distance down the foyer.

I liked Lili's seascape immediately – one could easily live with it on the lounge room wall. The painting (donated by George Belcher) was oil on cardboard and entitled 'Entrance to Aireys Inlet 1898.'



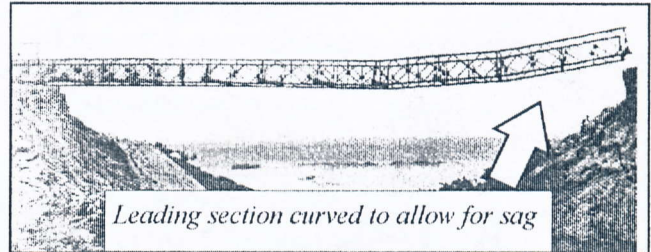
But the thing that intrigued me was that a clinker boat was depicted beached at the precise position mentioned by Ray Clarke. Surely this was the one later used to bring the school children across the flooded winter stream.

There is no doubt that researching the past is like completing a jig-saw puzzle - one thing certainly leads to another – even the unexpected L.B. ▷

BAILEY BRIDGE OVER HUTT GULLY

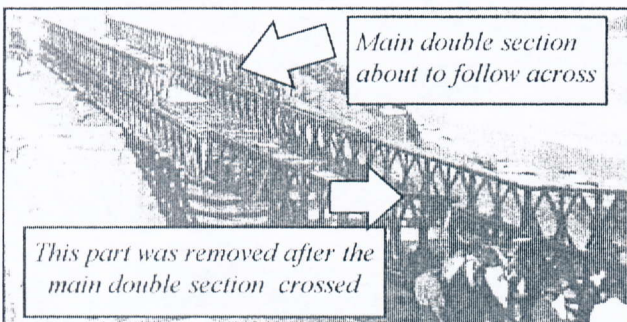
Jean and Vic. Wendt couldn't reach their holiday home at Moggs Creek after almost twelve inches of torrential rain fell during the evening of Monday 15/2/1954. The impact of the deluge swamped a small culvert at Hutt Gully. Water spilled across the road, gouging an impassable gap some 50' deep and 130' wide, effectively cutting the traffic between Anglesea and Lorne. Within 48 hours the Country Roads Board

main construction with counterweight on it's tail was merged, and followed to it's allocated position across



Leading section curved to allow for sag

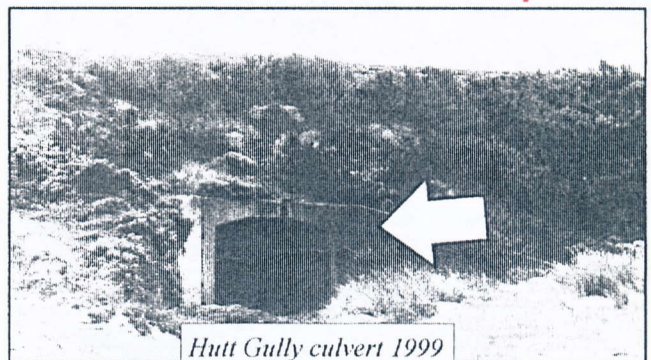
the gap. Great Ocean Road traffic proceeded across the temporary carriageway only 24 hours after the job commenced. A new culvert of larger diameter was installed - a small plaque on this is inscribed CRB1954. *Today the Hutt Gully Bailey crossing is almost a forgotten history. Spare a thought next time you*



Main double section about to follow across

This part was removed after the main double section crossed

mobilised the 22nd Reserve Construction Regiment to come from Melbourne and erect a single lane Bailey bridge across the dampened site. This system incorporated portable sections, light enough to be manhandled and joined. These were assembled onto heavy metal rollers, and pushed bit by bit across the gap, until they ran along rollers on the other side. The double height



Hutt Gully culvert 1999

pass the location. Jean Wendt well remembers that time in February 1954. L.B. ◻